

# TSM 6.2 for Mac OS X - Installation

## TSM 6.2 for Mac OS X - Installation

**Note:** During installation, you may need to enter your TSM node name and server name. You can find this information in the email confirmation from the Help Desk of your TSM registration.



### Out of Date

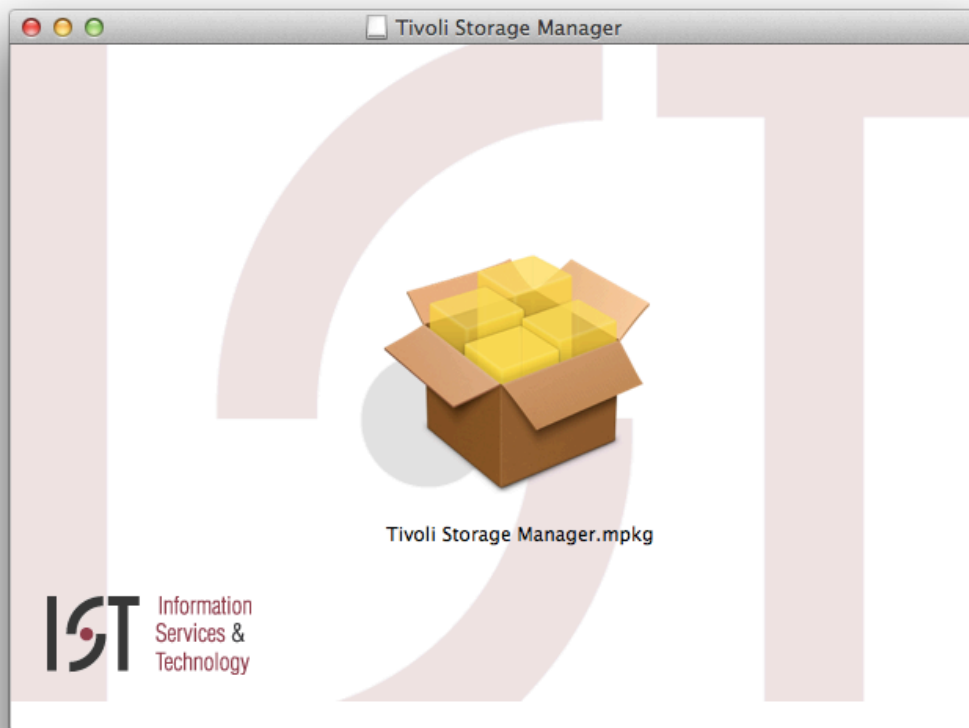
These instructions are not for the most recent version of TSM. These instructions are for TSM version 6.2, and the installation process is different for newer versions.


## Steps

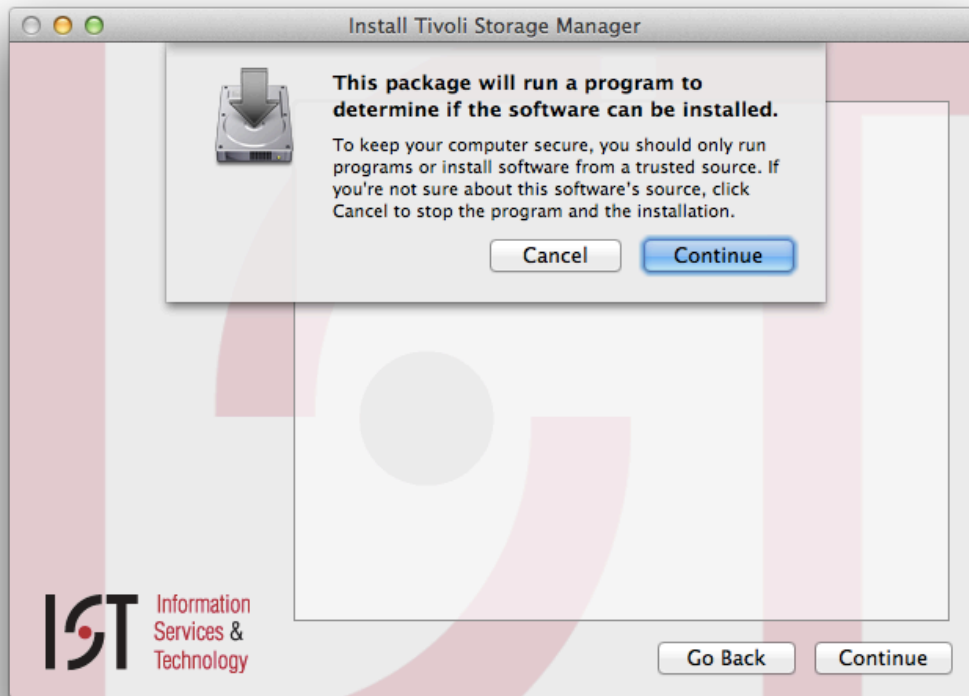
1. Go to the [TSM 6 for Mac download page](#) on the IS&T Software Grid. ([Certificates](#) required.)  
*Result:* The file containing the TSM 6 installer downloads as mit-tsm-6.2.2.dmg.



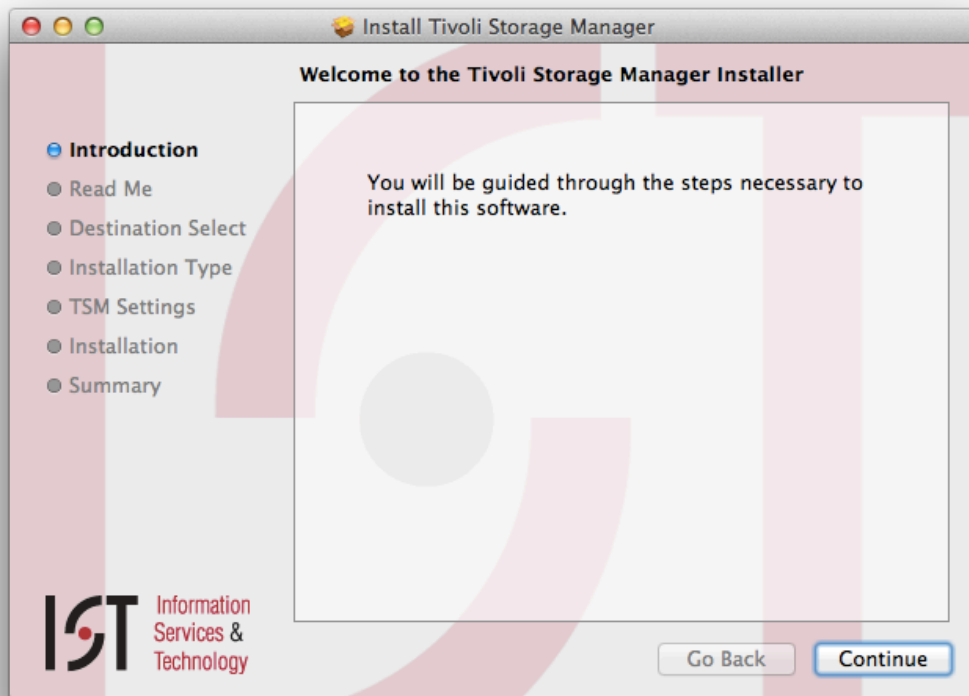
2. Open the disk image file and double-click on the **Tivoli Storage Manager.mpkg** package to start the installation.



-  Note, if you are running OS X 10.8 (or Mountain Lion) and you are blocked from running the TSM installer, you should use [these directions](#) to bypass the Gatekeeper security settings and allow the installer to run.
3. Click **Continue** if asked if you are sure you want to continue.

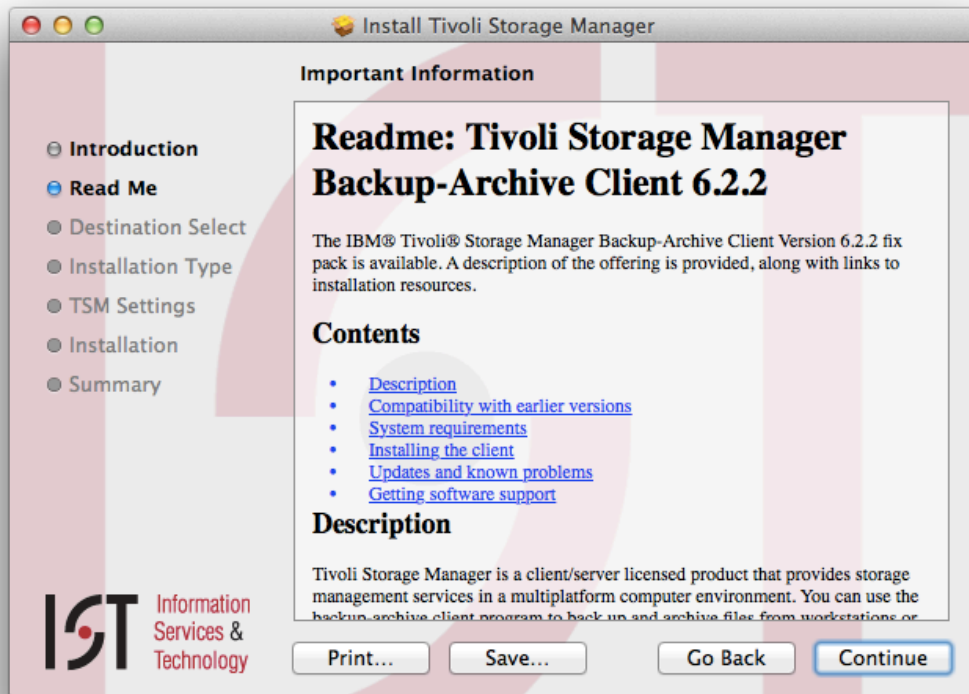


*Result:* The *Welcome to the Tivoli Storage Manager Installer* screen appears.

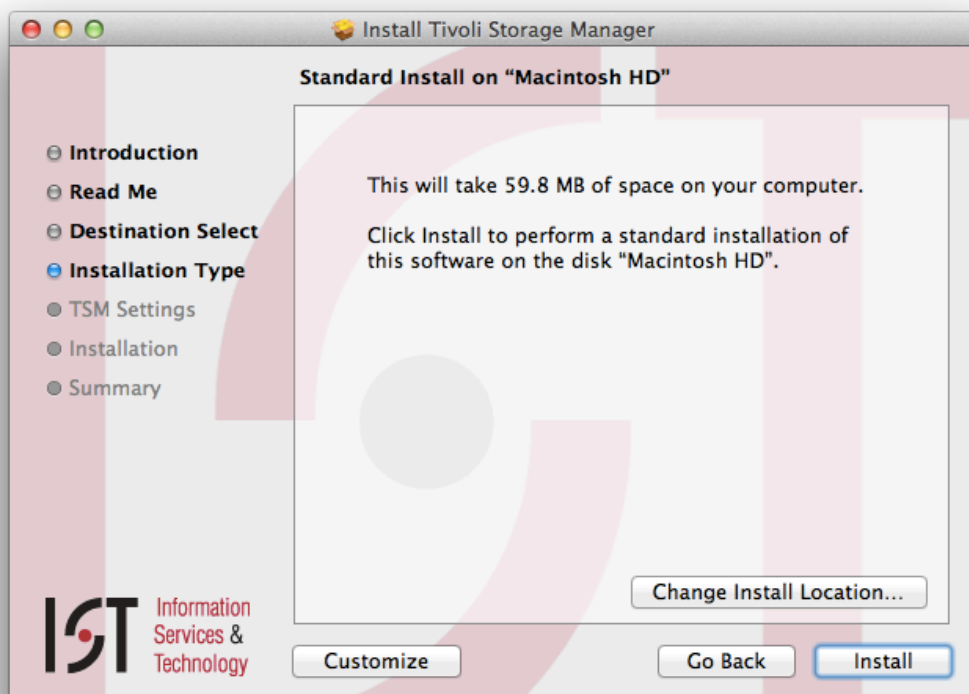


4. Click **Continue**.

*Result:* The Readme file appears. This file will be installed in your **Applications > Tivoli Storage Manager** folder.



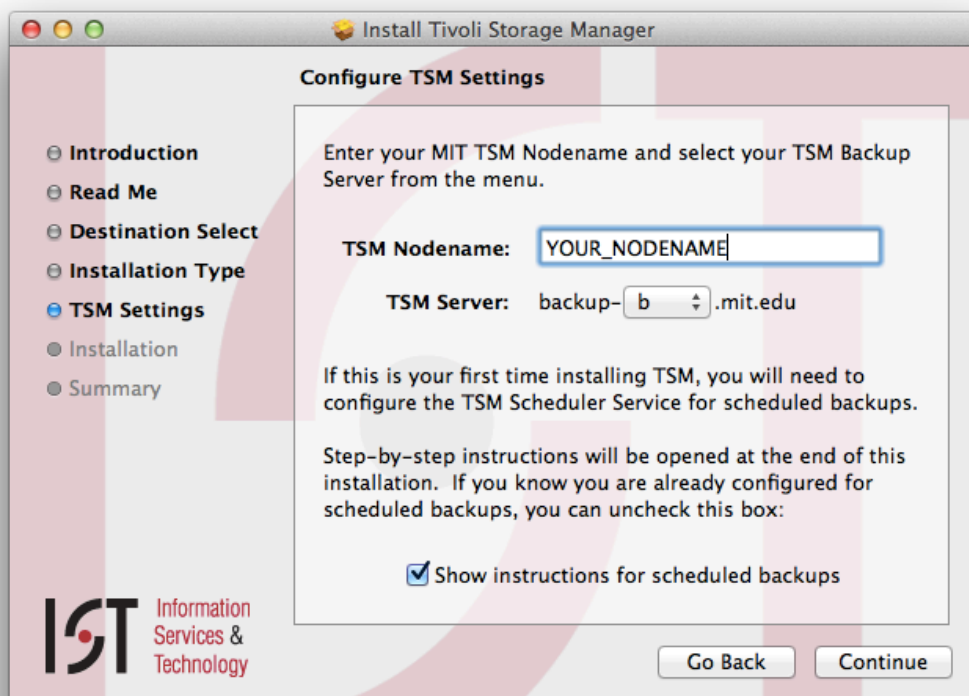
5. Read, print, or save the Readme file, then click **Continue**.  
*Result:* The "Standard Install on "Macintosh HD" screen appears.



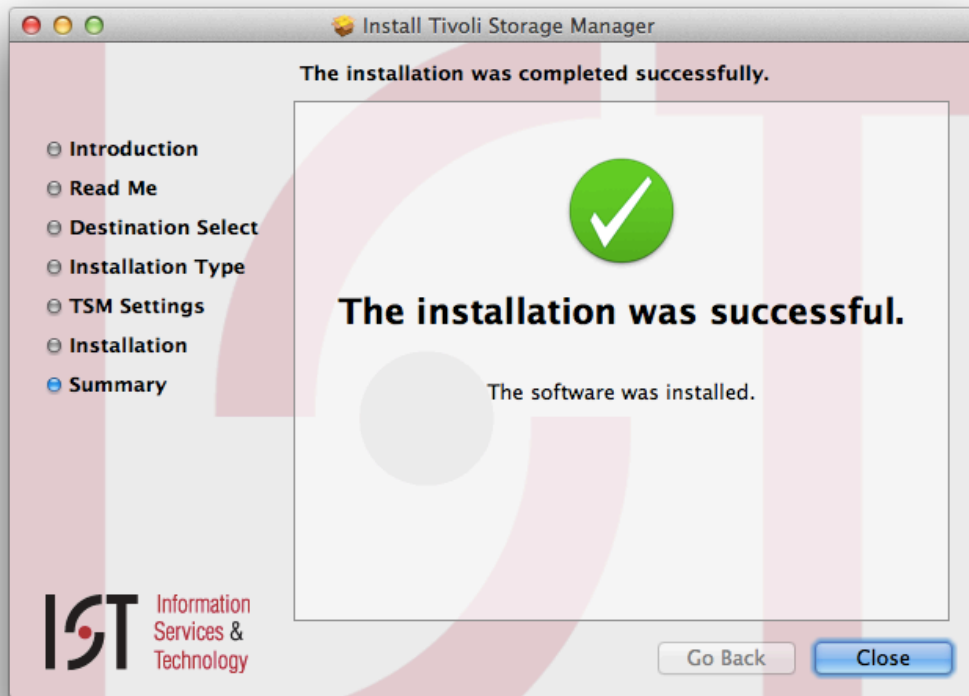
6. Click **Install**.  
*Result:* You are prompted to enter your Macintosh user name and password.



7. Enter your Mac Administrator username and password and click **OK** or **Install Software**.  
*Result:* The *Configure TSM Settings* screen appears.



8. Confirm your TSM Nodename and TSM server are correct and then click **Continue**.  
*Result:* A confirmation screen tells you that the software was successfully installed.



9. Click **Close** to exit the TSM installer.

For additional information about TSM, consult the MIT TSM readme file in the Tivoli Storage Manager folder.

If you have questions, [contact the IS&T Help Desk](#)

Learn how to login for the first time and how to set up scheduled backups:

- [TSM 6.x for Mac OS X: First-Time Login](#)
- [TSM 6.x for Mac OS X: Set up and Confirm Scheduled Backups](#)