

# Installing and Managing Certificates for Mac using CertAid 2.x

## Installing and Managing Certificates for Mac using CertAid 2.x



### Redirection Notice

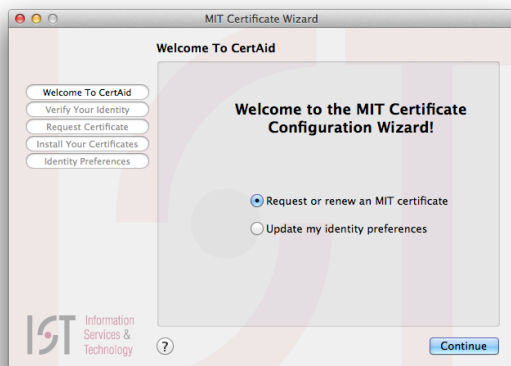
This page should redirect to [CertAid 2.2.6 for MacOS](#).

## Using CertAid 2.x to Install Certificates on Mac OS X 10.7 and newer

Follow these steps to install/renew your certificates for use in Safari.

1. [Download](#) and launch CertAid 2.

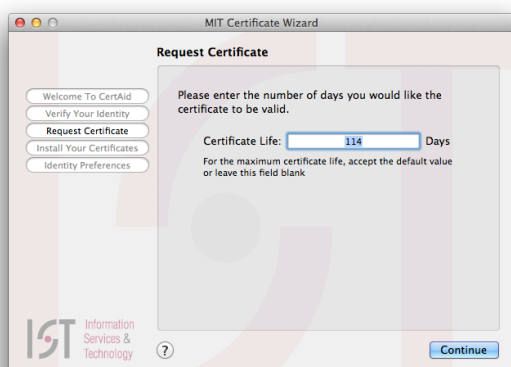
**Note:** Install any updates if prompted. If you receive a message that states "Certaid can't be opened because the identity of the developer cannot be confirmed", please go to this link: [Mac OS X - Identity of developer cannot be confirmed](#)  
**Result:** The *Welcome to CertAid* screen is displayed.



2. Select **Request or renew an MIT certificate** and click **Continue**.  
**Result:** The *Verify Your Identity* screen is displayed.



3. Enter your Kerberos username, Kerberos password, and MIT ID number, and click **Continue**.  
**Result:** The *Request Certificate* screen is displayed.



4. Enter a Certificate Life, or leave the default value (the maximum certificate life), and click **Continue**.

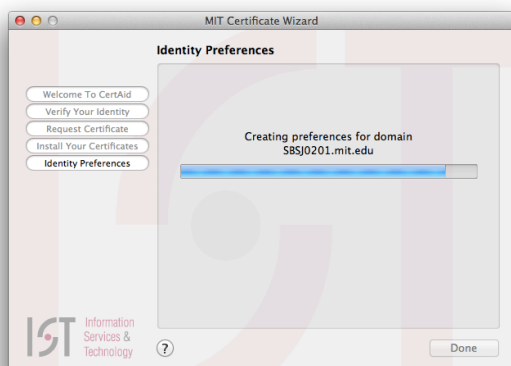
**Note: Most users should accept the default value.**

*Result: The **Install Your Certificates** screen is displayed.*



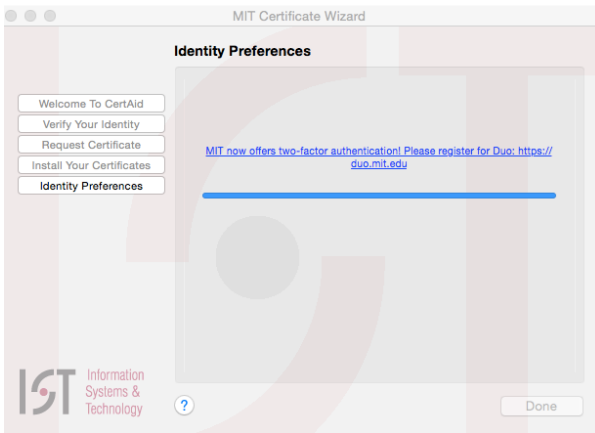
**Note:** If CertAid finds one or more existing certificates, you will be asked if you want to delete them. If you have used S/MIME for email encryption, do not delete your certificates. For more information, see [Should I Delete My Old or Expired Personal Certificate?](#).

5. The *Install Your Certificates* window displays the progress of installing the MIT Certificate Authority and your personal certificate. Once these steps are completed, click **Continue**.



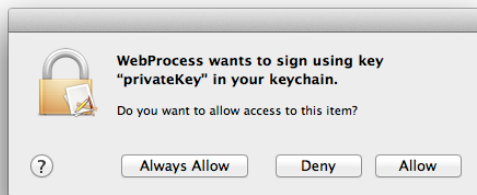
*Result: The **Identity Preferences** screen is displayed.*

6. The *Identity Preferences* window displays the progress of configuring your personal certificate to work with certain certificate-protected MIT websites. Once completed, click **Done**.



*Result:* CertAid quits.

7. The first time you attempt to use your new certificate, you will see this prompt. Click **Always Allow**.



## Using CertAid 2.x to Configure Existing Certificates on Mac OS X 10.7 & newer

See: [archive:CertAid for Safari and Google Chrome]