

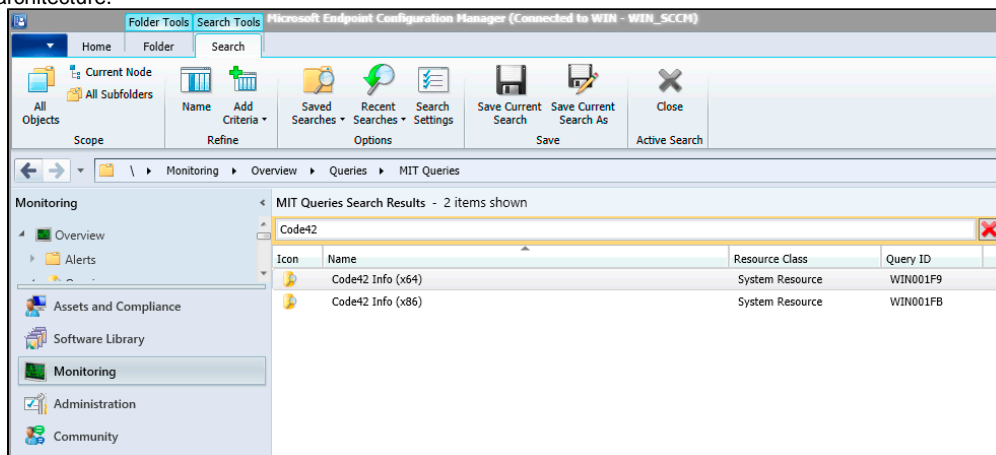
MECM - SCCM - Viewing Crashplan (Formerly Code42) Data in the Console

MECM - SCCM - Viewing Crashplan (Formerly Code42) Data in the Console

CrashPlan and Code42 are the same application/service. Crashplan was renamed Code42 after it was sold, then renamed again back to CrashPlan after it was sold again. Which name you see in the product, filenames, or paths depends on what version you are using. For the purposes of this documentation, the names are used interchangeably and refer to the same product.

The new vendor website for Crashplan is: <https://www.crashplan.com/>

Code42 backup data for your machines is viewable in the MECM console. This is made available via a custom hardware inventory class. To view the data, simply run the query located under **Monitoring->Queries->MIT Queries->Code42 (x86) or (x64)** depending on your computer's architecture.



The data returned should show the date/time of last backup, size of the backup set, the application name, and the version of CrashPlan. If you are not seeing any CrashPlan data for your computer, then it likely that it has the CrashPlan application installed but it is not backed up.

The screenshot shows the Microsoft Endpoint Configuration Manager console with the query 'Results for CrashPlan Info (x64)' selected. The main pane displays a table with 5 items:

System Resource Name	SMMSG_System_CRASHPLA...	SMMSG_System_CRA...	SMMSG_System_CRASHPLA...	SMMSG_System_CRASHPLA...	Installed Applications (64)...	Installed Applica...
EPH-SCCH-WIN10	cfeiler	Active	2019-08-11 18:30:04	0.29 GB	Code42 CrashPlan	6.8.8.12
CRI-TOSHIBA	courtney	Active	2019-07-24 13:26:39	14.57 GB	CrashPlan PROe	4.8.2.4
ARONBAYNES	Administrator			GB	Code42 CrashPlan	6.8.8.12
DSGL942-MTDTEST	danriley			GB	Code42 CrashPlan	6.8.8.12
WSUS-TEST-WIN10	danriley	Active		GB	Code42 CrashPlan	6.8.4.4

See Also

- [Microsoft Endpoint Configuration Manager \(MECM\) Landing Page](#)