

When I use the Pharos client on Windows, I get an error that says "Failed to connect to host PHAROS-PRODP1 on port 28203"

When I use the Pharos client on Windows, I get an error that says "Failed to connect to host PHAROS-PRODP1 on port 28203"

Causes

There are several causes of this error.

Wireless networks

You cannot use the **MIT GUEST** wireless network to print to the Pharos printers.

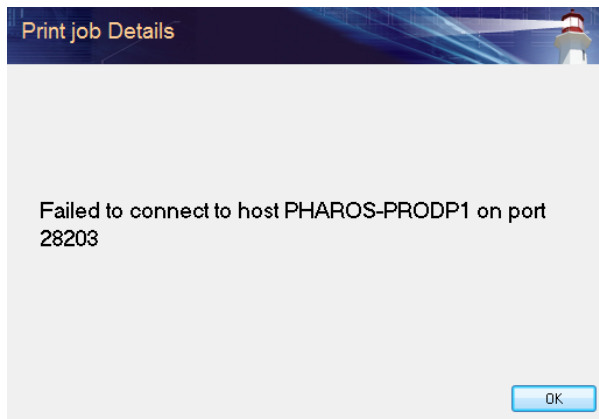
If your computer is connected via campus WiFi, you must be connected to the **MIT SECURE** wireless network.

Firewall

If you are using a third-party firewall program, try temporarily disabling it and printing again. If that works, you'll need to configure your Firewall to permit outbound connections on port 28203. If you are using the built-in Windows Firewall, you do **not** need to make this change.

DNS Suffix

Ensure your DNS suffix is set to "mit.edu". This is normally required for Windows and Office activation. Instructions can be found [\[here\]](#).



See Also

- [Pharos Printing Landing Page](#)