

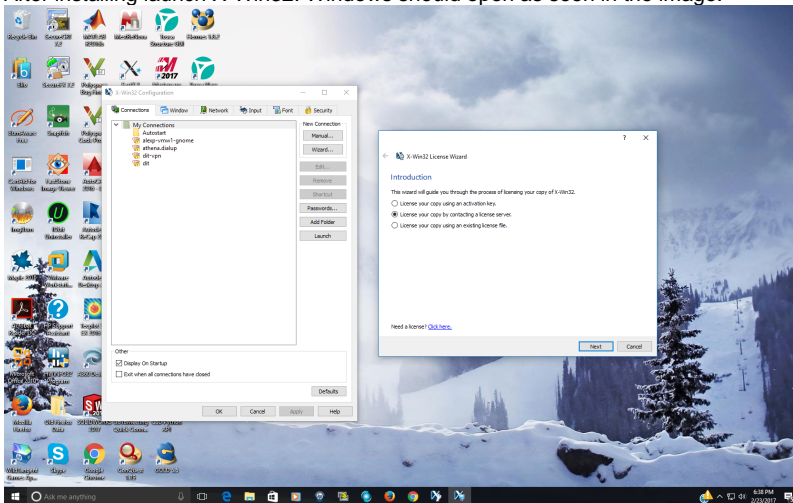
# How to configure X-Win32 to run off the IS&T license server

## How to configure X-Win32 to run off the IS&T license server

- The [standard X-Win32 installation instructions](#) direct users to install it using a standalone activation key. You only need to follow the instructions in this article if you wish to run it off the license server instead.
- This article will instruct users on setting up license server licensing on a fresh X-Win32 install, or on an X-Win32 installation where licensing had previously been configured.
- You will need to use the [MIT VPN](#) if you use this licensing method to run X-Win32 while off-campus.

### Fresh install:

1. After installing launch X-Win32. Windows should open as seen in the image:



In the License Wizard window select **License your copy by contacting a license server**, click **Next**.

2. Proceed to step 4 below.

### Previously configured installation:

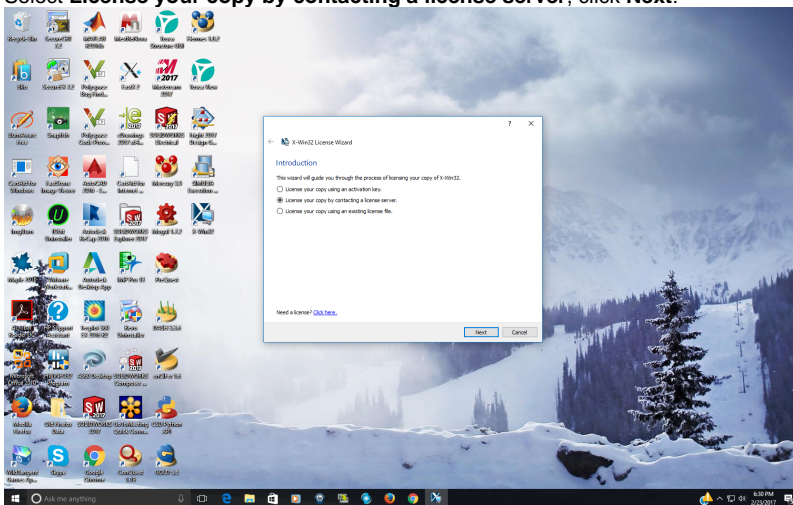
1. With X-Win32 running, locate the X-Win32 icon in the Windows System Tray:



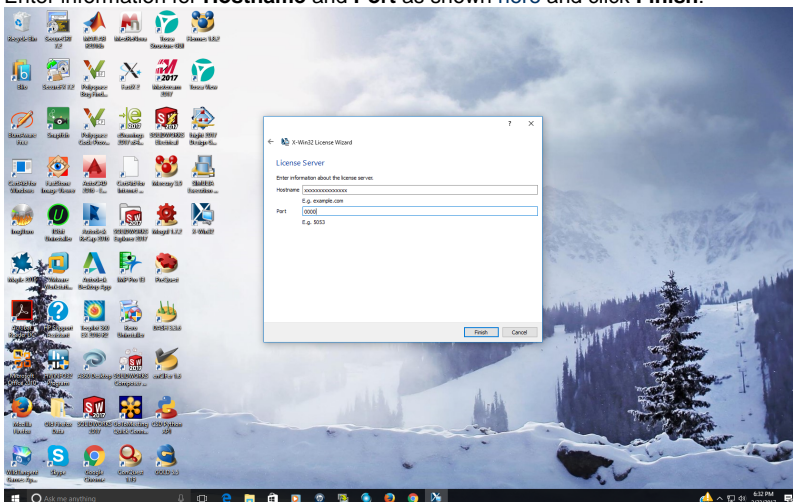
2. Right-click on the X-Win32 logo and Select the **Help -> Activate License** menu item. The **License Wizard** window should open.



3. Select **License your copy by contacting a license server**, click **Next**:



4. Enter information for **Hostname** and **Port** as shown [here](#) and click **Finish**:



 Your license information is stored in file %LOCALAPPDATA%\StarNet Communications\X-Win32\license.lic

## See Also

- [X-Win32 Landing Page](#)