

How do I install and activate X-Win32?

How do I install and activate X-Win32?

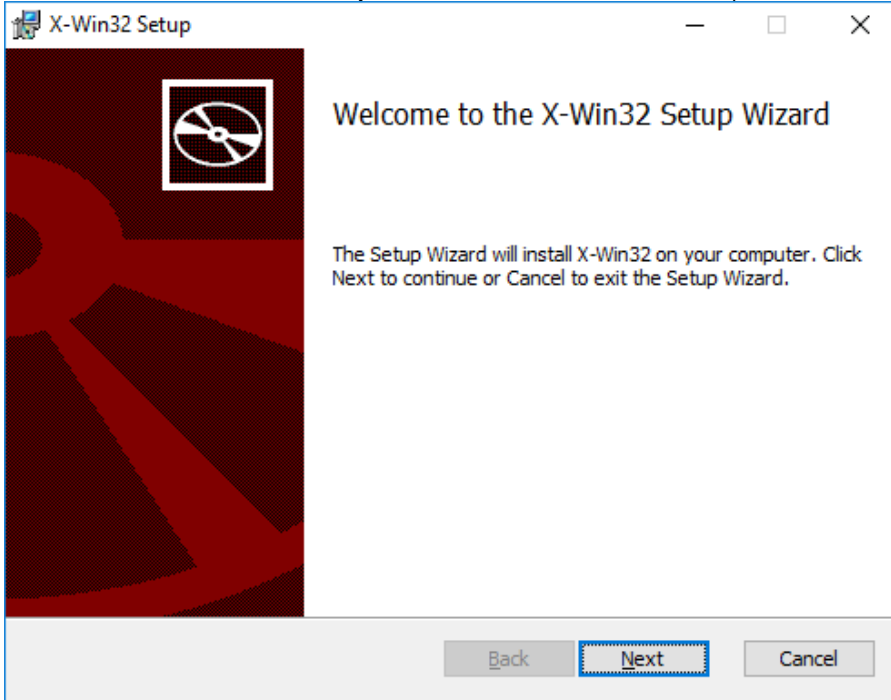
Getting Help

Please note that support for X-Win32 is provided by the vendor through this, [StarNet Support page](#). These are the direct links if you want to bypass the support page with the information about support options and mailing list signup. They have an [online knowledgebase](#) and this form for [email support](#).

Before You Start

- ✔ Download the installer and Activation Key from IS&T's [X-Win32 for Windows](#) page
- ✔ Ensure that your computer is connected to the Internet.

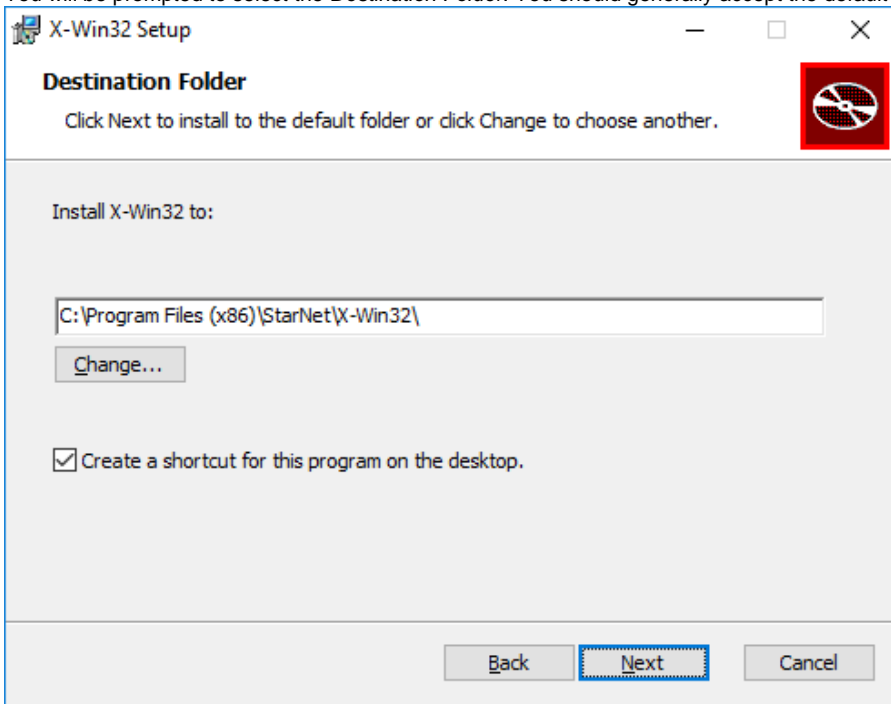
1. Double-click on the X-Win32 installer you downloaded to start the installation process. Click **Next**.



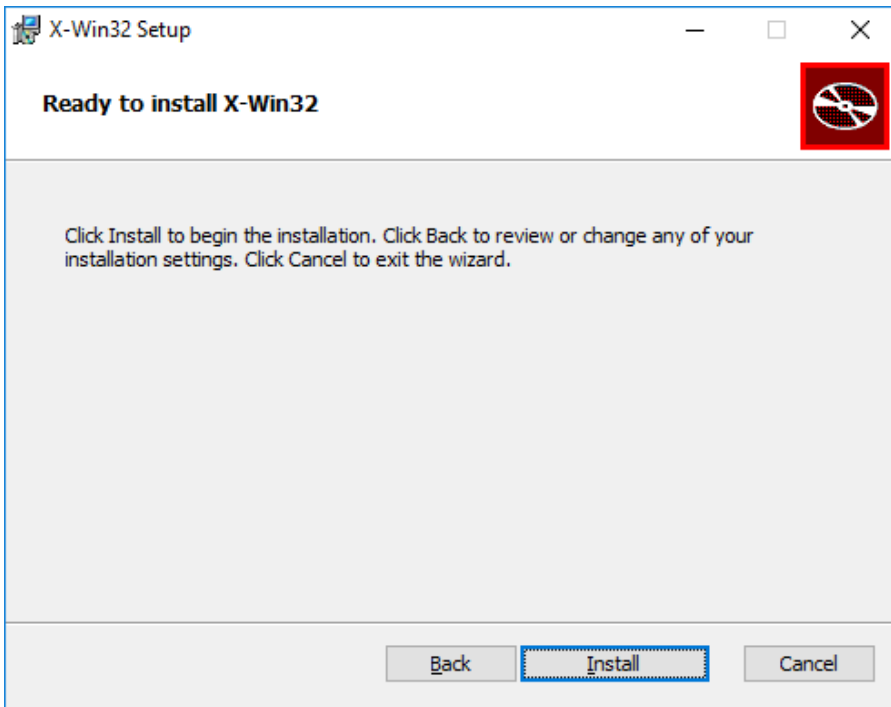
2. Agree to the License Agreement. Click **Next**.



3. You will be prompted to select the *Destination Folder*. You should generally accept the default setting. Click **Next**.

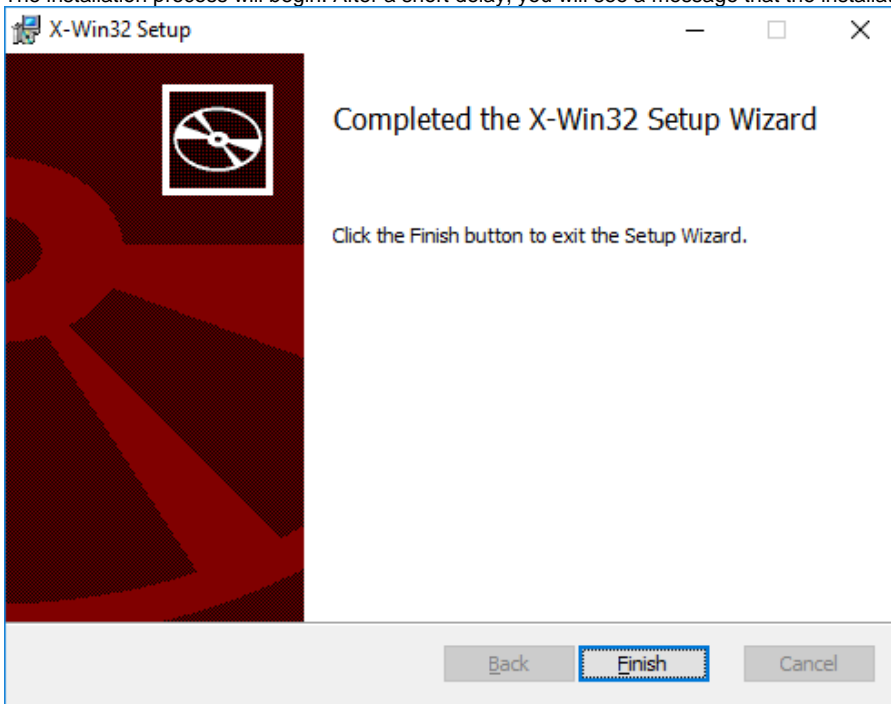


4. You will be prompted to begin the installation. Click **Install**.

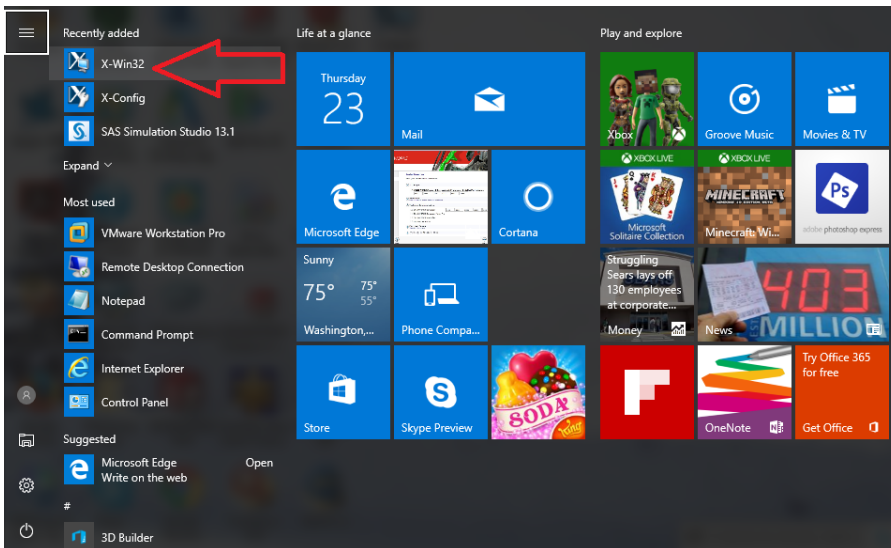


If the installation process does not begin right away, Windows may require confirmation. Move the installation window aside, and you may see a *User Access Control* window underneath or minimized. You should click **Yes** to give Windows permission to install the software.

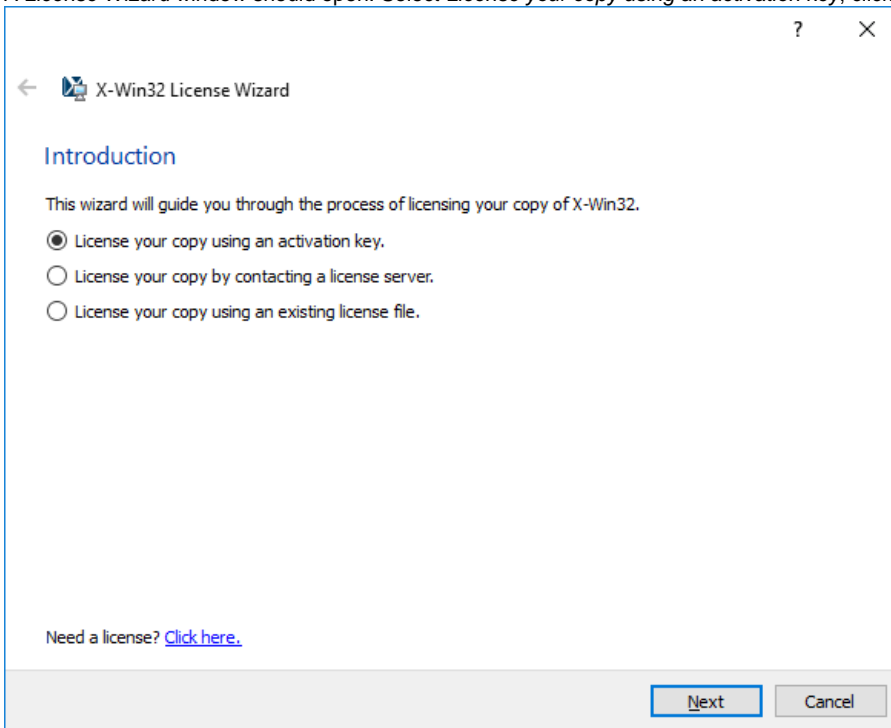
5. The installation process will begin. After a short delay, you will see a message that the installation is complete. Click **Finish**.



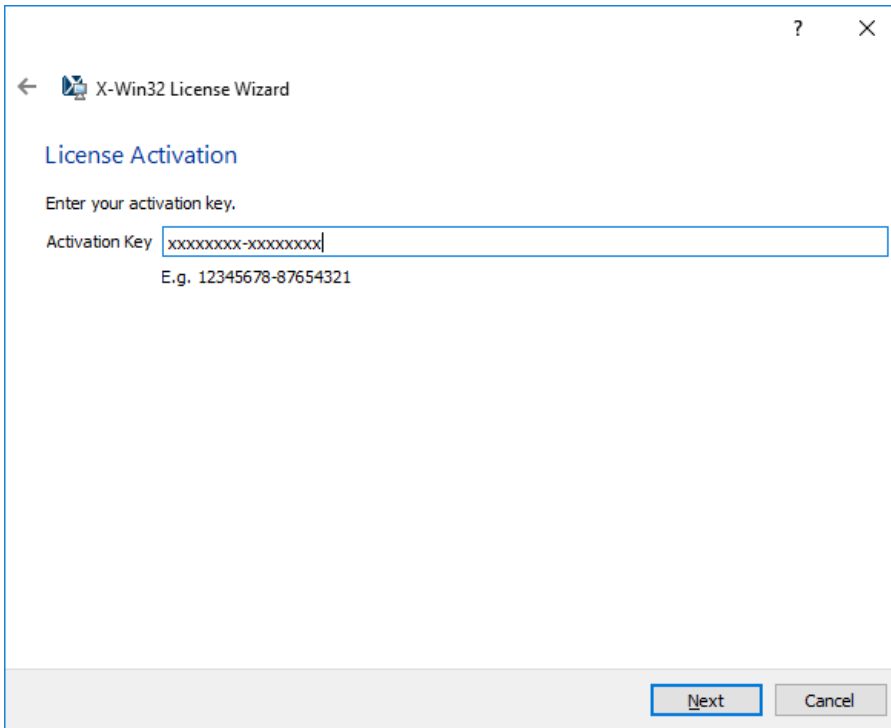
6. Launch X-Win32 by going to the *Start Menu* and selecting *X-Win32* on the left side.



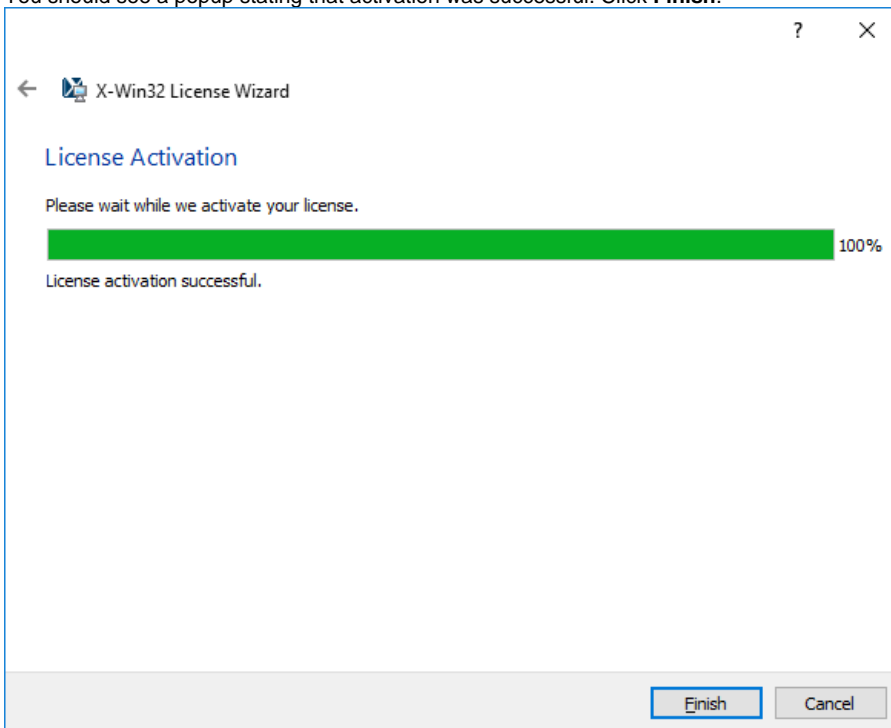
7. If Windows firewall alerts pop up, select **Allow Access**.
8. If a prior X-Win32 release was installed, you may get a popup stating *license upgrade failed*. If this happens, you can dismiss the popup. It can safely be ignored.
9. A *License Wizard* window should open. Select *License your copy using an activation key*, click **Next**.



10. Enter the Activation Key which you can find [here](#) and click **Next**.



11. You should see a popup stating that activation was successful. Click **Finish**.



Complete

Your installation is now complete.

To configure X-Win32 to connect to Athena, please see [How do I configure X-Win32 to connect to Athena?](#).

See Also

- [X-Win32 Landing Page](#)