

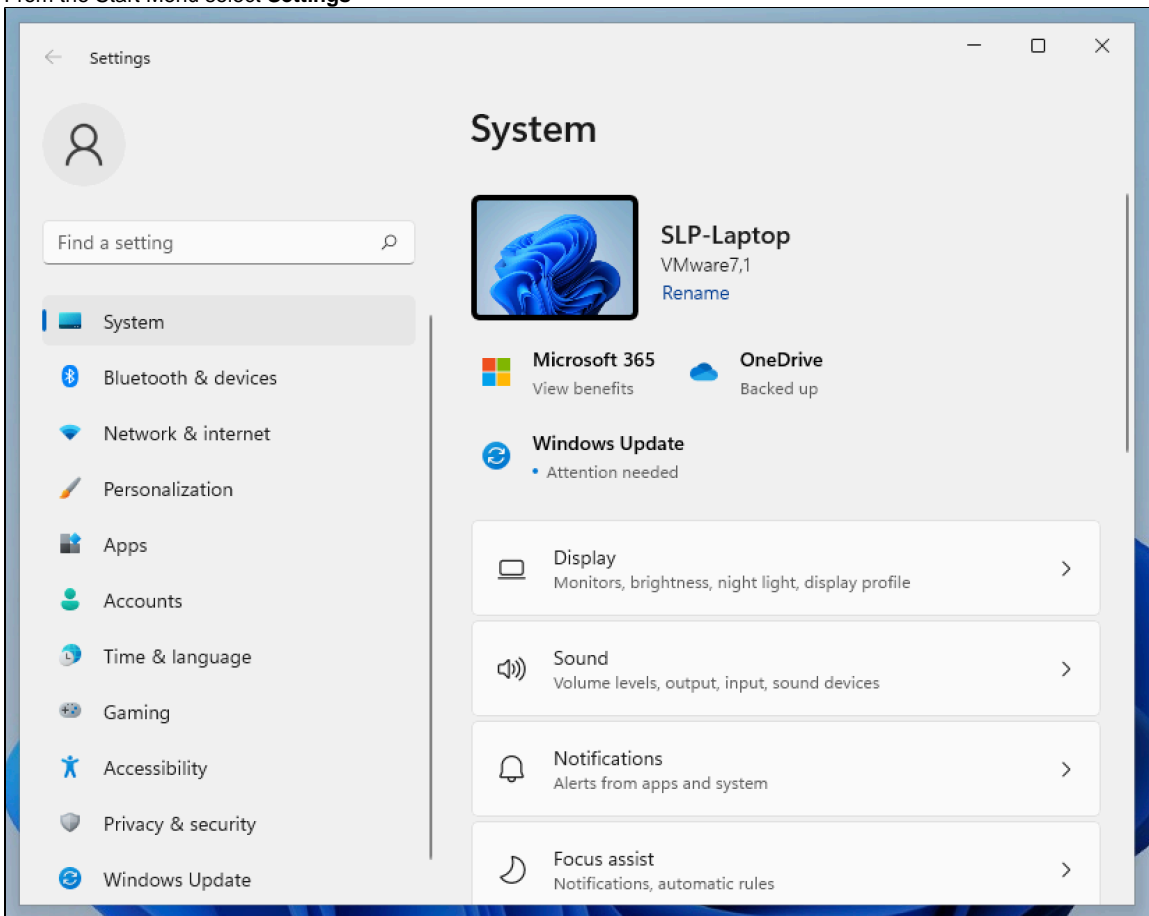
# SLP Laptop Setup - Connect Windows 11 to School Account

## SLP Laptop Setup - Connect Windows 11 to your School Account

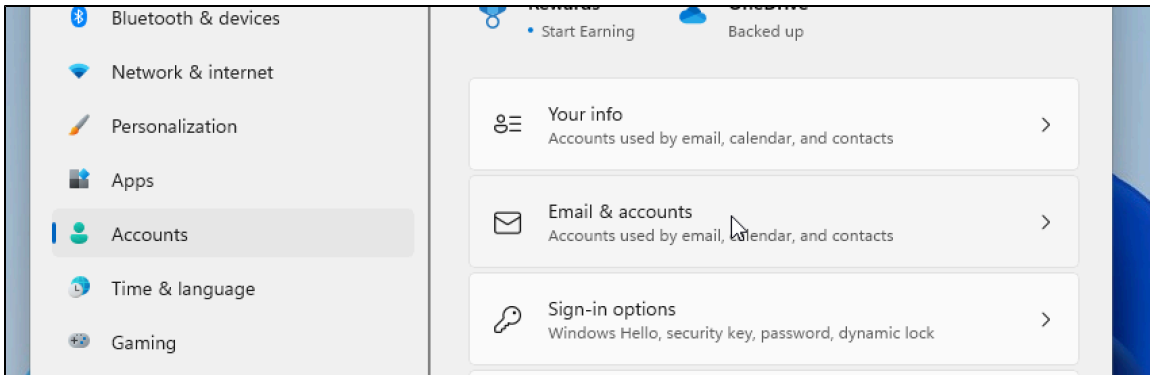
Connecting Windows 11 to your school account will allow you to properly encrypt your computer with BitLocker and store the key in a secure location. This will also automatically install MIT's bundle of software:

- Acrobat Reader DC
- CertAid
- Google Chrome
- CrashPlan/Code42
- CrowdStrike
- Dropbox
- GlobalProtect
- Microsoft Office 365
- Pharos Printing
- Slack
- Sophos Central
- VLC
- Zoom

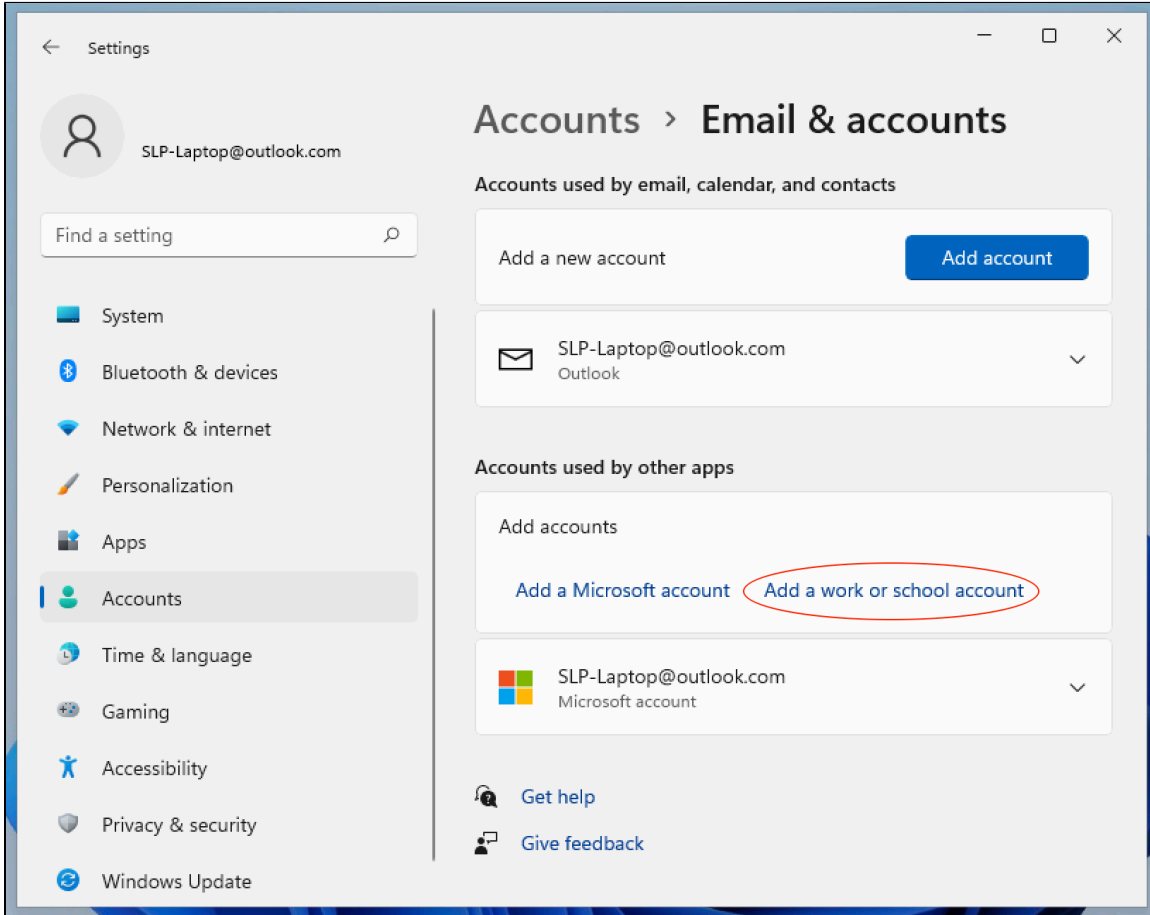
1. From the Start Menu select **Settings**



2. Click **Accounts** and select **Email & accounts**



3. Choose to add a **Work or school account**



4. Enter your school email address in the form of *kerberosusername@mit.edu*.

Microsoft


Sign in

kerbusername@mit.edu

×

[Can't access your account?](#)

Next

 Sign-in options

Terms of use

Privacy & cookies

...

5. Complete the DUO Authentication

×

# Touchstone@MIT

test settings help

Welcome, please identify yourself to access MIT services.

## Have an MIT certificate?

Use Certificate - Go

☐ Always login with this

Certificates are your key to secure web services at MIT, (such as Benefits, Request Tracker, SAPweb, and WebSIS) and the preferred way to access MIT servers.

## No certificate? Use Kerberos username

Username:

kerbusername @mit.edu

Password:

••••••••

👁

Login

If you don't have a certificate installed on this machine, you may login using your MIT username (the 8 characters before your @mit.edu email address) and your Kerberos password.

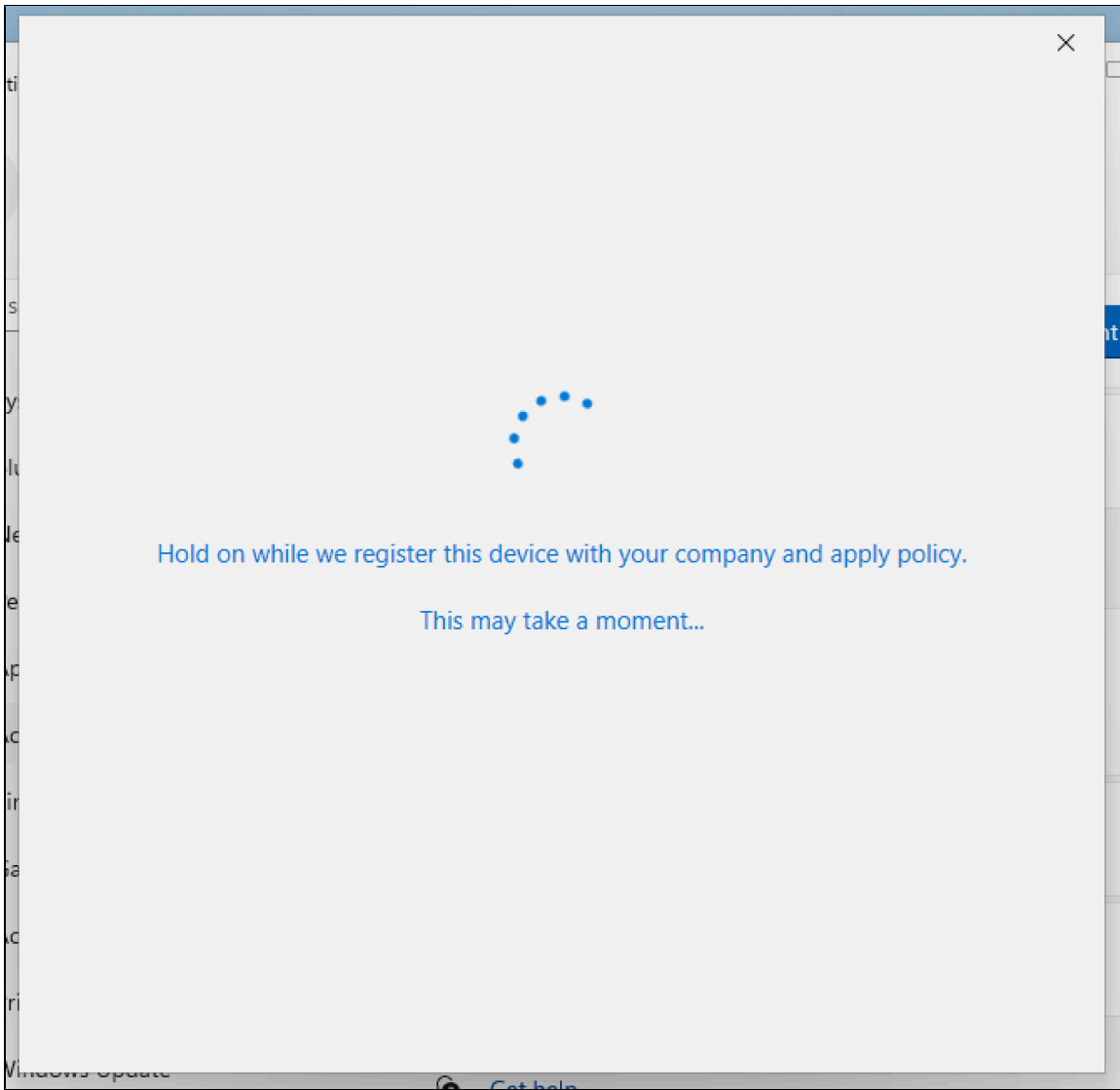
## Have Kerberos tickets?

Use existing tickets - Go

☐ Always login with this

Using your Kerberos tickets to authenticate to MIT Touchstone requires correct browser configuration. This option is useful for Athena and WIN.MIT.EDU users.

6. Please wait while you device is registered



7. **Optional:** You may be prompted to verify your identity if you've enabled 2-factor authentication on your Microsoft account. Please enter the request identification method if prompted.
8. The registration process will complete. Once Windows 11 is connected to your school account, applications will begin to install automatically. Please be patient as the time it takes to download and install applications may vary depending on your Internet connection speed and traffic conditions.

This video demonstrates the above steps for connecting Windows 11 to your school account.