

# CertAid for Windows

## CertAid for Windows



### Redirection Notice

This page should redirect to [CertAid Landing Page](#).

On this page:

[Using CertAid for Windows to Install Certificates on Windows](#)

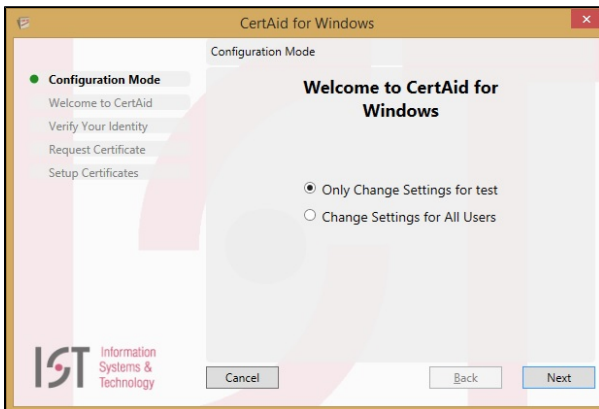
[Using CertAid to Configure Internet Options without installing Personal Certificates](#)

## Using CertAid for Windows to Install Certificates on Windows

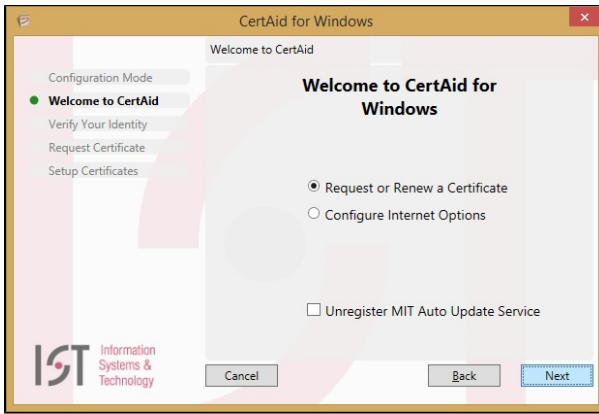


- MIT **WIN.MIT.EDU** domain users do not need to use the CertAid for Windows. This applies to Windows Windows 7, 8.1, and 10.
- These instructions do not apply to the Microsoft Edge browser available in Windows 10.
- Microsoft .NET Framework is required: <https://www.microsoft.com/en-us/download/details.aspx?id=53344>
- Screens may vary lightly depending on your version of Windows and CertAid.

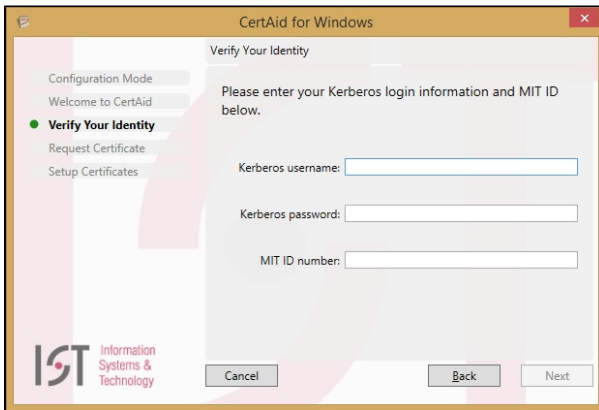
1. If you have not already done so, [download](#) and install CertAid for Windows.
2. Launch the CertAid for Windows application from **Start > Programs**.  
(If you have just installed the program, the installer will launch it for you.)



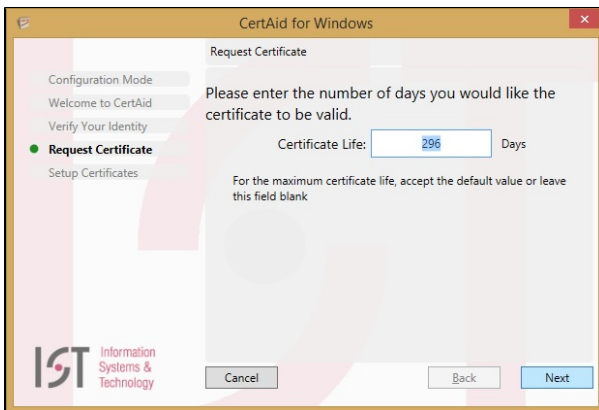
3. If your Windows user account has administrator privileges, you will be given the option to change settings for all users on the system (this does not affect personal certificates). Most users should accept the default option and click **Next**.  
*Result:* The *Welcome to CertAid* screen is displayed.



4. Select **Request or renew an MIT certificate** and click **Continue**.  
*Result: The Verify Your Identity screen is displayed.*

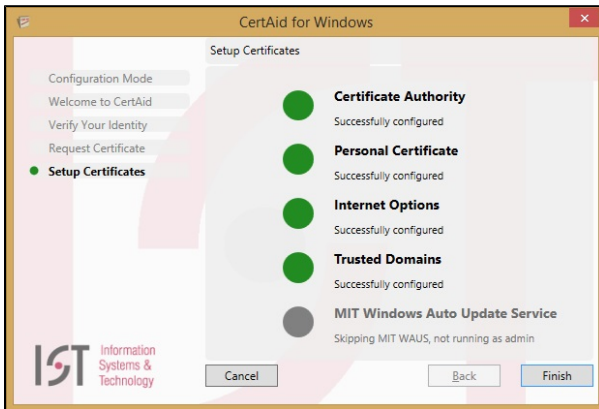


5. Enter your **MIT Kerberos username**, **Kerberos password**, and **MIT ID number**, and click **Continue**.  
*Result: The Request Certificate screen is displayed.*



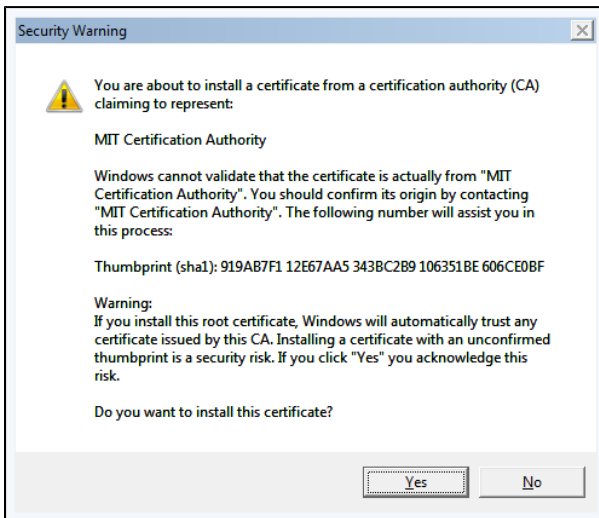
6. Enter a **Certificate Life**, or leave the default value (the maximum certificate life), and click **Continue**.  
**Note:** Most users should accept the default value.

Result: The *Install Your Certificates* screen is displayed.



7. The *Install Your Certificates* window displays the progress of installing the MIT Certificate Authority and your personal certificate. Once these steps are completed, click **Finish**.

If you get the dialog box below, click **Yes**.

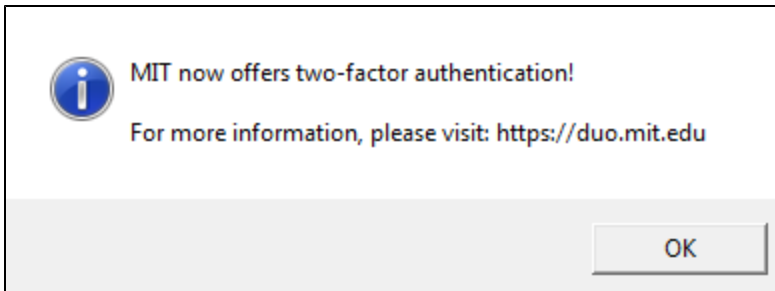


If CertAid finds one or more existing certificates, it will display the following dialog box asking to delete them.



If you have used S/MIME for email encryption, **do not** delete your certificates. Click **No**. For more information, see [Q: Should I Delete My Old or Expired Personal Certificate?](http://kb.mit.edu/confluence/x/7gNn).

8. Click **Yes** to delete older certificates.
9. The **MIT now offers two-factor authentication!** window displays the url to enroll in Duo Two-Factor Authentication.

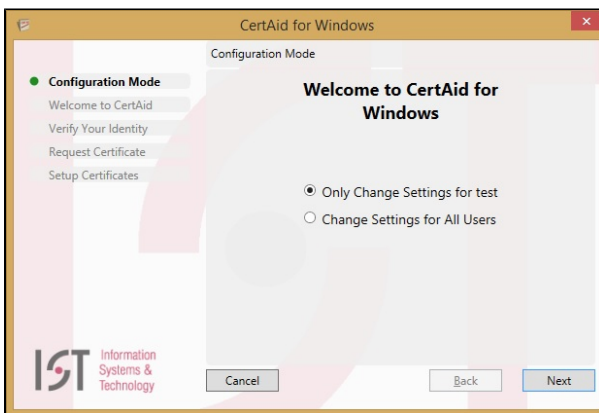


Follow the URL to enroll a device for Duo Two-Factor Authentication

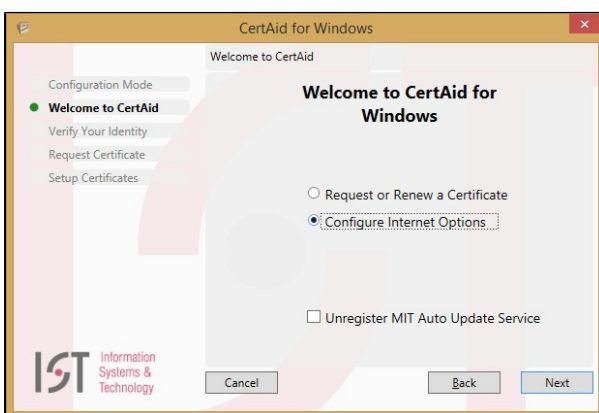
10. Click **OK**.

## Using CertAid to Configure Internet Options without installing Personal Certificates

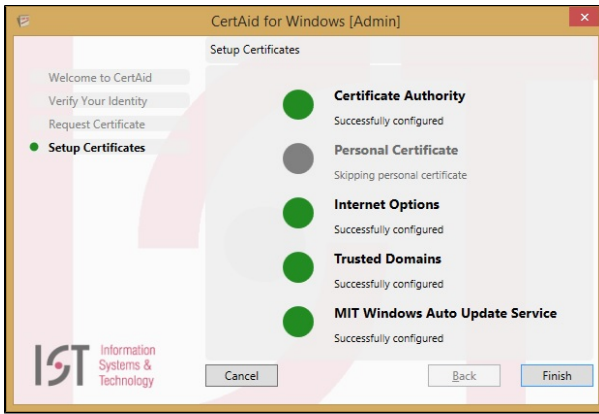
1. Follow the steps above to install and launch CertAid for Windows.
2. If your Windows user account has administrator privileges, you will be given the option to change settings for all users on the system. Most users should accept the default option and click **Next**.




*Result:* The *Welcome to CertAid* screen is displayed.



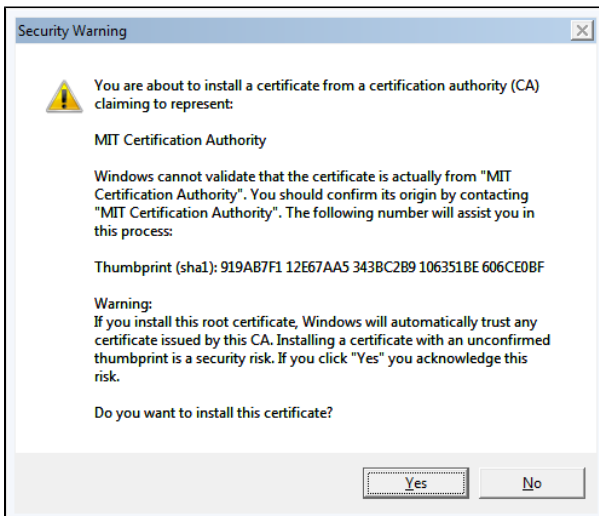
3. Select **Configure Internet Options** and click **Next**. This option does not affect personal certificates.  
*Result:* The *Install Your Certificates* screen is displayed.



4. The *Setup Certificates* window displays the progress of installing the MIT Certificate Authority, the Client CA, Trusted domains, etc. Once these steps are completed, click **Finish**.

 The "Personal Certificate" section will be grayed out since it is not used in this mode.

5. If you get the dialog box shown below, click **Yes**.



If CertAid finds one or more existing certificates, it will display the following dialog box asking to delete them.



 If you have used S/MIME for email encryption, **do not** delete your certificates. Click **No**. For more information, see Q: [Should I Delete My Old or Expired Personal Certificate?](#).

6. Click **Yes** to delete older certificates.