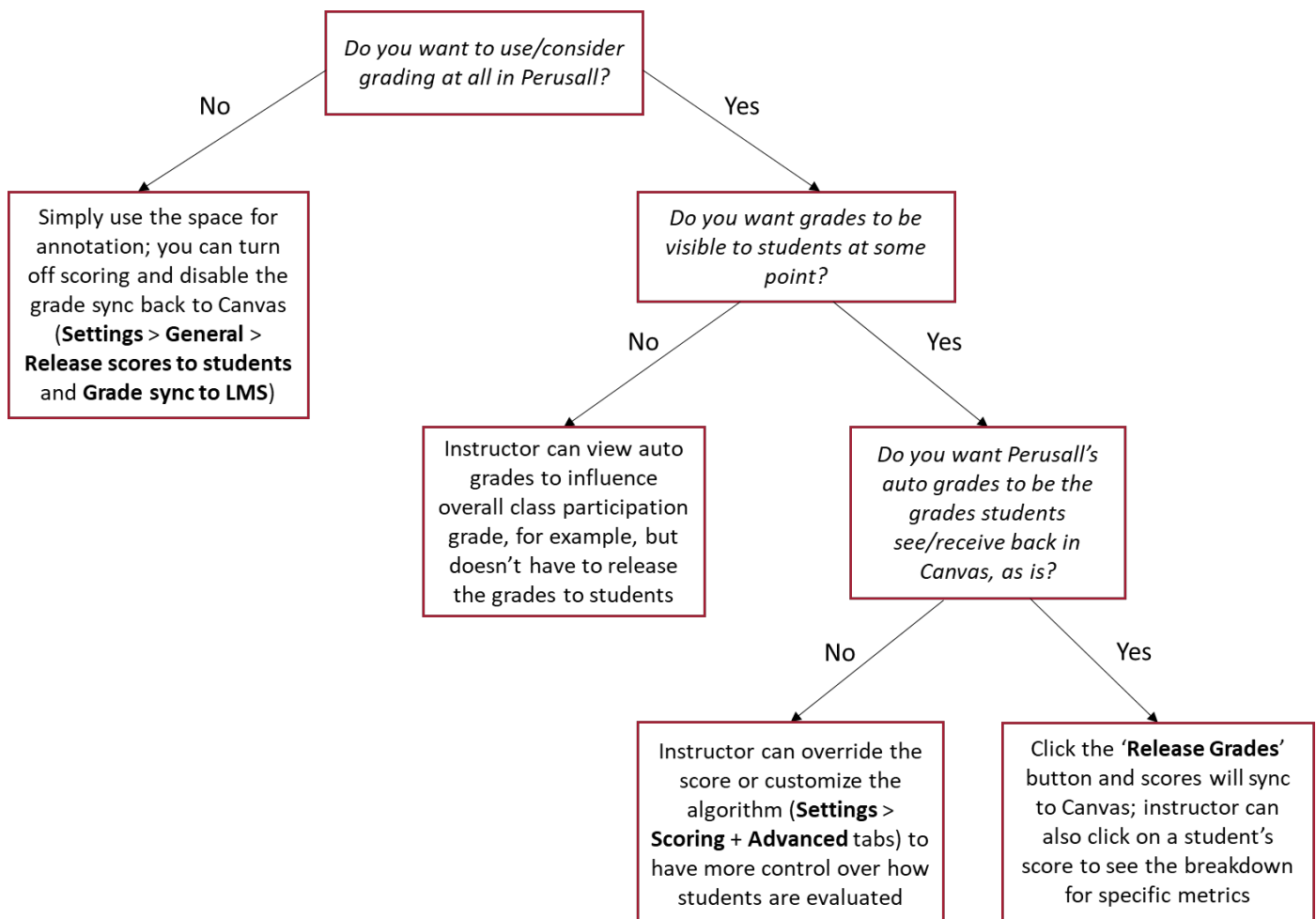


Perusall: Suggested Guidelines for Grading

What can I do with automated grades in Perusall?

Perusall is a social annotation platform that encourages active and collaborative learning. With this comes the key feature of a machine learning-driven grading algorithm that automatically scores students' annotations. Although Perusall automatically grades annotations no matter what, the instructor can choose how to take action with these automated grades. Uses of the auto grading tool will likely vary based on the needs/goals of the instructor and the individual course. The decision tree below explains the various courses of action:



Keep Grades Hidden from Students

Students do not see their grades for a Perusall assignment until the instructor releases the grades and they become visible under the **My Scores** section, as well as on Canvas. This means the instructor can just keep the grades unreleased and therefore hidden from students.

- *A user experience note about this option:* When an instructor has unreleased grades for one or more assignments, they will see a warning about it on the course home page in Perusall, which can be ignored.

Override Grades on an Individual Level

The instructor can override a student's score for an assignment. On the **Gradebook** page, find the student's score for the corresponding assignment, click the pencil icon to the right of the score and type in the new score.

How does automated grading work in Perusall?

Each assignment is graded automatically as students are working. The default final score scale is 0-3:

- 0 = Demonstrates superficial reading of only part of the assignment
- 1 = Demonstrates superficial reading of entire assignment OR thorough reading of only part of assignment
- 2 = Demonstrates thoughtful and thorough reading of entire assignment
- 3 = Demonstrates exceptionally thoughtful and thorough reading of entire assignment

There are six components – annotation content/quality being the main one – with target values (0-100) that can be adjusted and get factored into the final score (see section below). Read more about scoring [here](#) too.

Customize each Component's Target Values

The instructor can make adjustments to how Perusall calculates scores for each assignment. Each component has a target value from 0 to 100, representing the maximum amount a student can earn from that component toward the overall score. The instructor can customize this overall target for each of the six components:

- **Annotation content:** scores each comment or question as below, meets, or exceeds expectations
- **Opening assignment:** credit for opening assignment multiple times (i.e., students chunked their work)
- **Reading:** based on % of pages or sections the student opens, to encourage students to read to the end
- **Active reading time:** credit for each minute spent actively with Perusall open in the student's browser
- **Getting responses:** credit for the replies students post on others' comments, to encourage discussion
- **Upvoting:** credit for students upvoting others' annotations and questions, and for receiving upvotes

The screenshot displays the Perusall Scoring settings interface. On the left sidebar, the 'Settings' option is highlighted with a green circle and the number 1. The top navigation bar shows the 'Scoring' tab selected with a green circle and the number 2. The main content area features a bar chart with six components: Annotation content component (60%), Opening assignment component (20%), Reading component (20%), Active reading time component (10%), Getting responses component (20%), and Upvoting component (20%). Below the bar chart, there is a section for 'Reset scoring settings to a preset:' with two radio buttons: 'Annotation content only' (selected, marked with a green circle and the number 3) and 'Holistic (recommended)'. At the bottom, there is a slider for 'Annotation content score target' set to 60% (marked with a green circle and the number 4). The slider is accompanied by the text: 'Based on Perusall's annotation quality algorithm. Students can earn up to this percentage of full credit based on comment quality.'

1. Information about how scoring is set up in Perusall for the course is located under **Settings**.
2. Then, select the **Scoring** tab in the top menu. There is information about scoring at the top of this page.
3. The '**Holistic**' option is the default setting, which takes into account the six components. The '**Annotation content only**' setting bases all of the scoring on annotations alone, and not the other activities in Perusall like time spent reading, upvoting, etc.
 - For example, if '**Annotation content only**' is selected as the scoring option, the **Annotation content score target** (shown in #4) automatically changes to be at 100% on the scale.
4. To customize the target of each of the six components, use the sliding scale to set the desired %.

Set Threshold Scoring

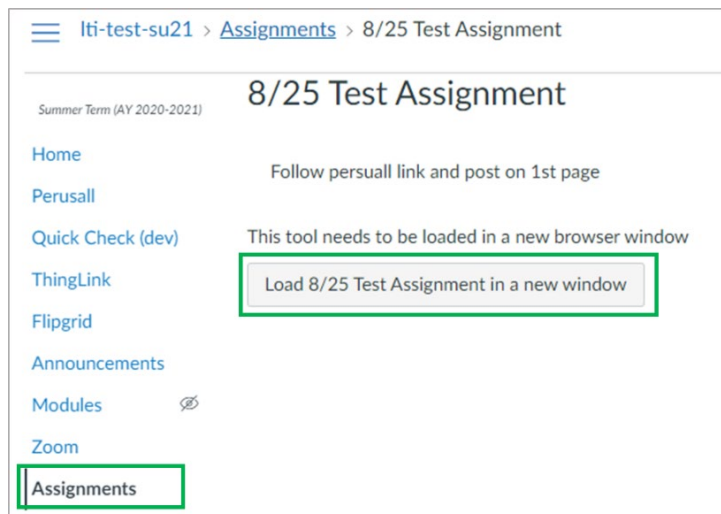
If the instructor prefers that students either get credit or no credit for each assignment (think: pass/fail scoring), threshold scoring can be enabled under **Settings > Advanced**.

- 1 = meets threshold
- 0 = does not meet threshold

With the default 0-3 scoring and a threshold of 2, for example, any student who gets 1 would have received a 2 or 3 with the default score, and any student who gets a 0 would have received a 0 or a 1 with the default score.

How do grades sync with Canvas?

In order for grades to sync back to Canvas, students must launch each Perusall assignment from an assignment-specific link in Canvas, where the assignment has a name that matches the title of the one in Perusall (note that there is a 'Copy full title for LMS' button that ensures the title of the assignment in Perusall gets copied exactly). The assignment-specific link in Canvas appears as a button that prompts the student to load the assignment in a new window (shown below).



Note: If a grade is not syncing back to Canvas, it is possible the student launched Perusall from a general LTI link (i.e., just clicking the **Perusall** option in the left-hand menu on Canvas) or navigated to the assignment within Perusall's interface. This can be fixed retroactively (see this Perusall [resource](#) for more on this process).

Given this, it is recommended that the **Perusall** option in the left-hand menu in Canvas is hidden from student view, to eliminate alternative ways to navigate to the Perusall assignment (see this Canvas [resource](#) for how to hide menu options).

For other questions related to grades and scoring, reach out to support@perusall.com.