


MECM - SCCM - Create a Deployment

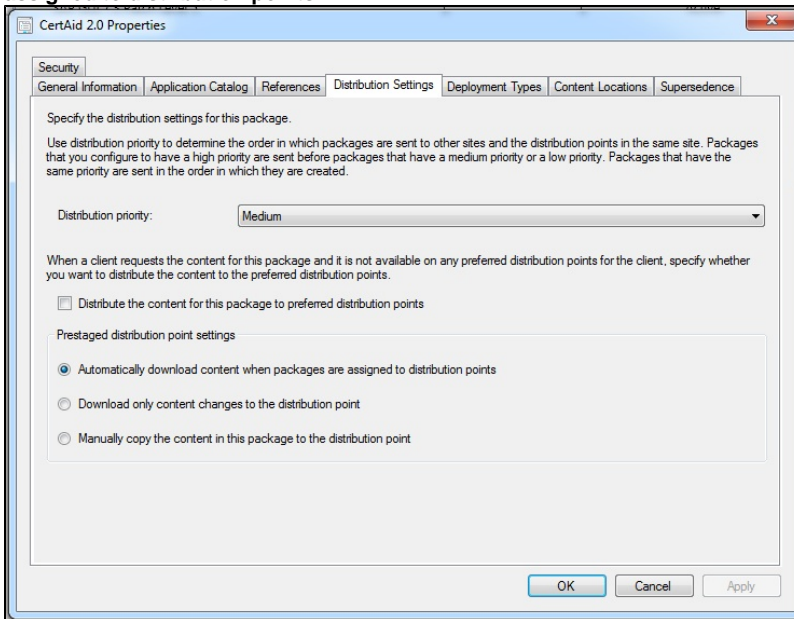
MECM - SCCM - Create a Deployment

A package or application will not be available to client machine until it is deployed. You will first need to create a target collection if you have not already done so.

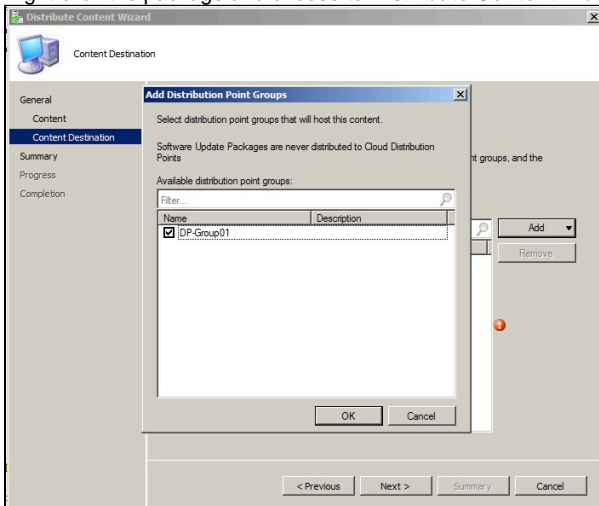
Create an Application Deployment

 If you're deploying a pre-created MIT Application or Package, please skip straight to step 4. Otherwise, follow the steps at [MECM - SCCM - Application Creation](#)

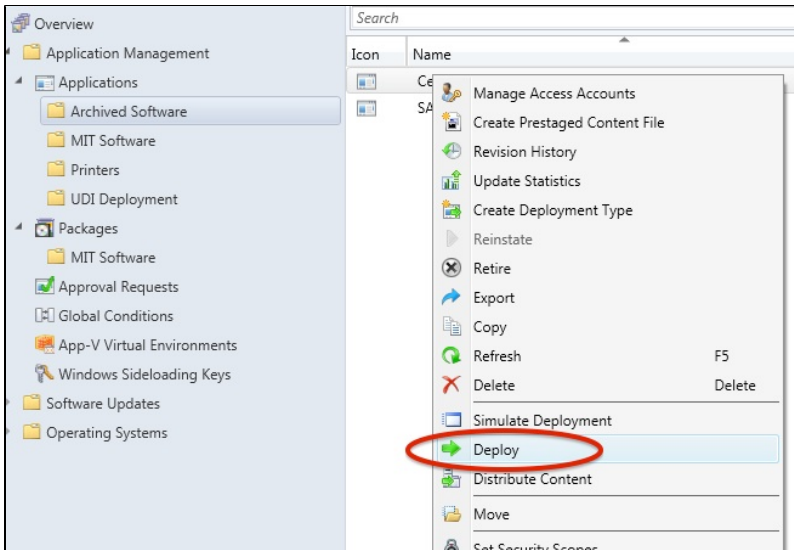
1. Right-click on the application or package and select **Properties**.
2. Click the **Distribution Settings** tab. Then click the radio button next to **Automatically download content when packages are assigned to distribution points**.



3. Right-click the package and choose to **Distribute Content**. Add a preferred **distribution point group**. Click **OK** and then **Next**.



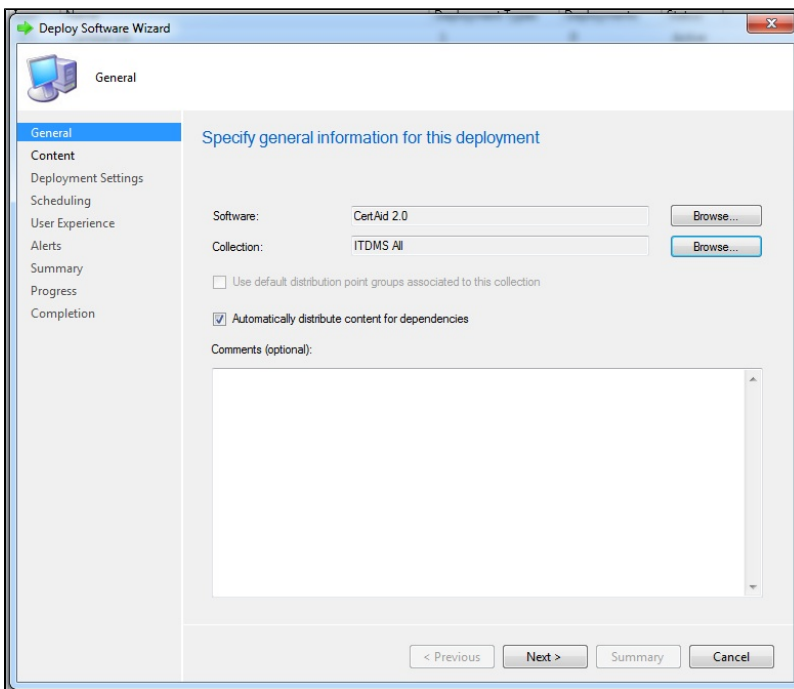
4. Right-click on the package and choose to **Deploy**.



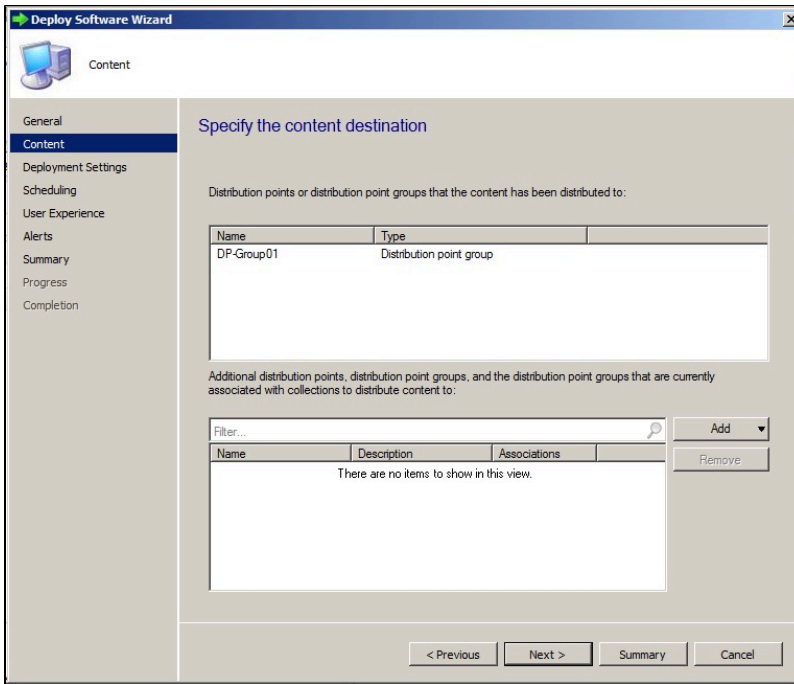
5. Choose a collection that you would like to push the software to. Typically this is a device collection, a collection of computers.



On occasion, you may want deploy a piece of software to a group of users. Please see [\[this KB article\]](#) for more information



A distribution point group should already be assigned.



Deploy Software Wizard

Content

Specify the content destination

Distribution points or distribution point groups that the content has been distributed to:

Name	Type
DP-Group01	Distribution point group

Additional distribution points, distribution point groups, and the distribution point groups that are currently associated with collections to distribute content to:

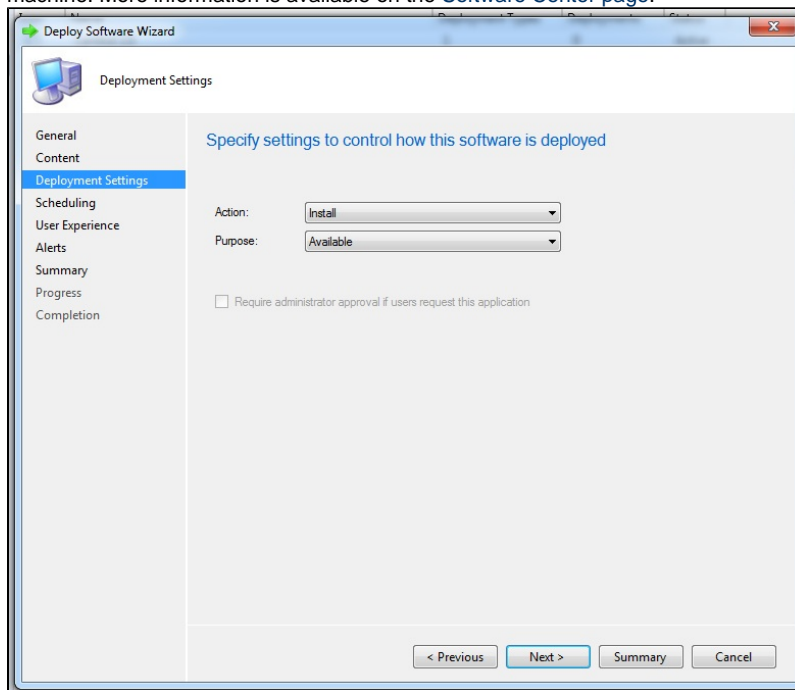
Filter...

Name	Description	Associations
There are no items to show in this view.		

Buttons: < Previous, Next >, Summary, Cancel

6. Choose whether to make the applications "available" or "required" or "uninstall".

- Available - End user can choose whether to install the application or not. The app will appear in the Software Center on the client machine. More information is available on the [Software Center page](#).



Deploy Software Wizard

Deployment Settings

Specify settings to control how this software is deployed

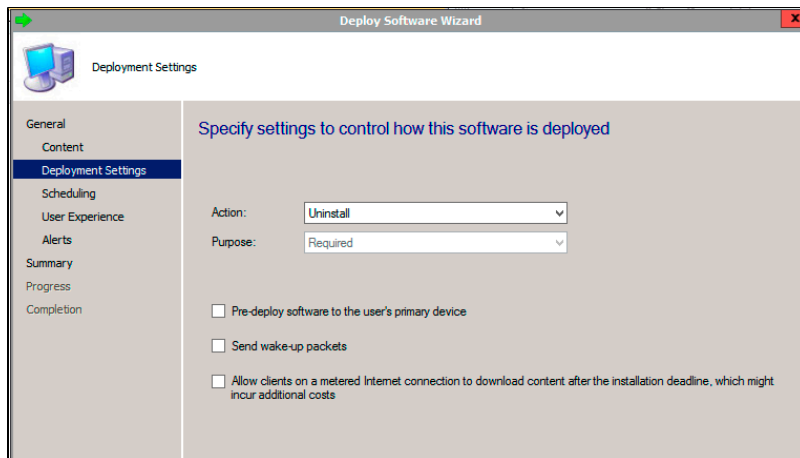
Action:

Purpose:

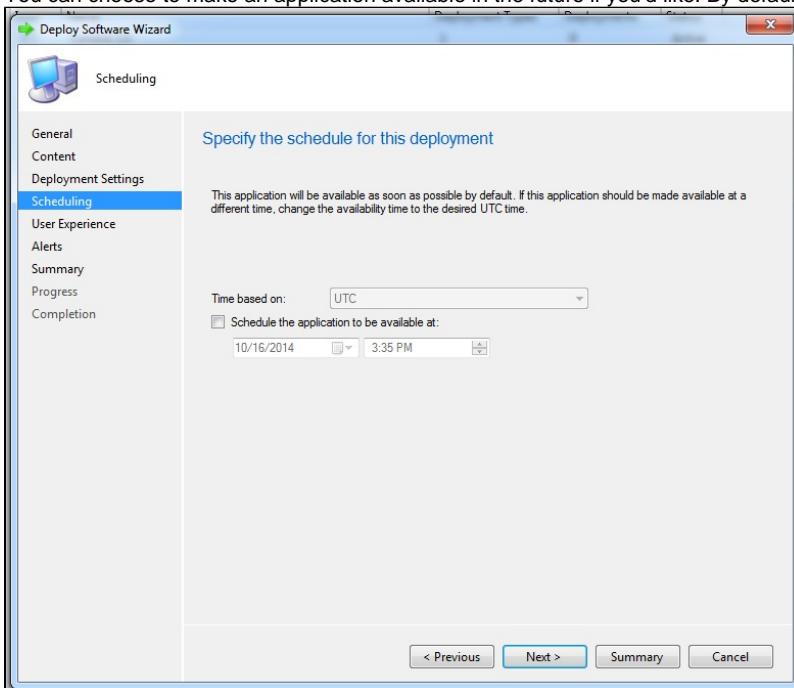
☐ Require administrator approval if users request this application

Buttons: < Previous, Next >, Summary, Cancel

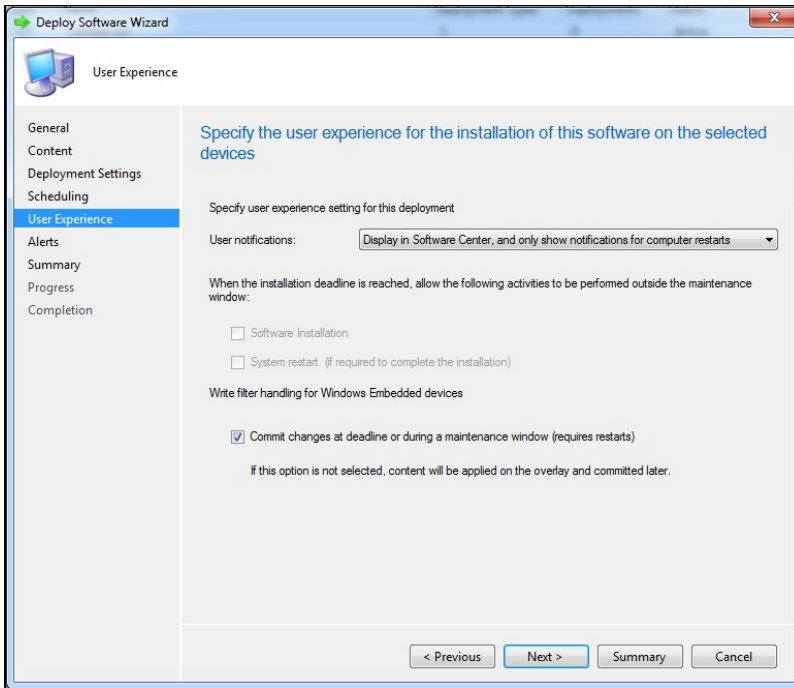
- Required - The application becomes mandatory on the client machine. If the application is uninstalled, it will be reinstalled the next time the client runs a software evaluation.
- Uninstall - The application will be "required" and will uninstall.



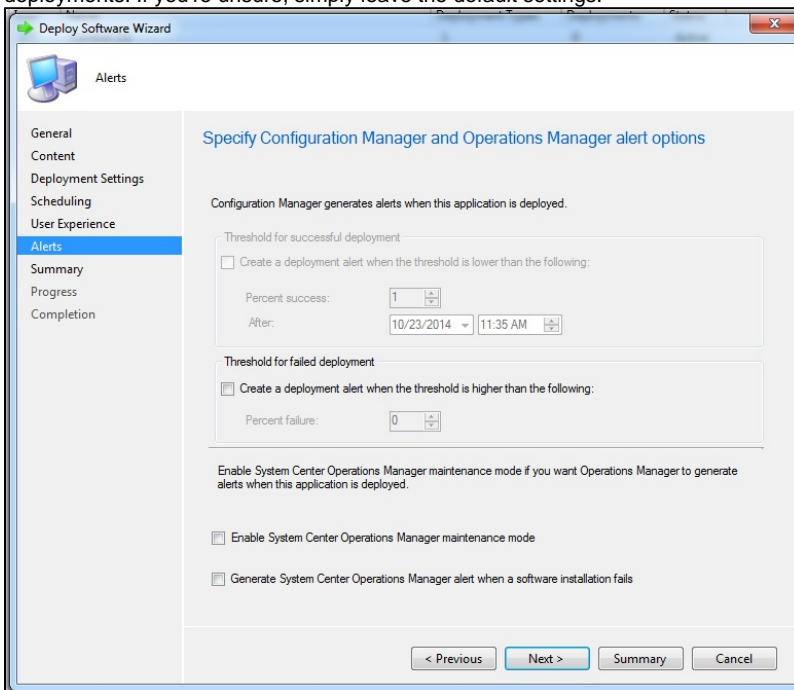
7. You can choose to make an application available in the future if you'd like. By default the application will be available immediately.



8. You can specify the user experience for installation of the software.



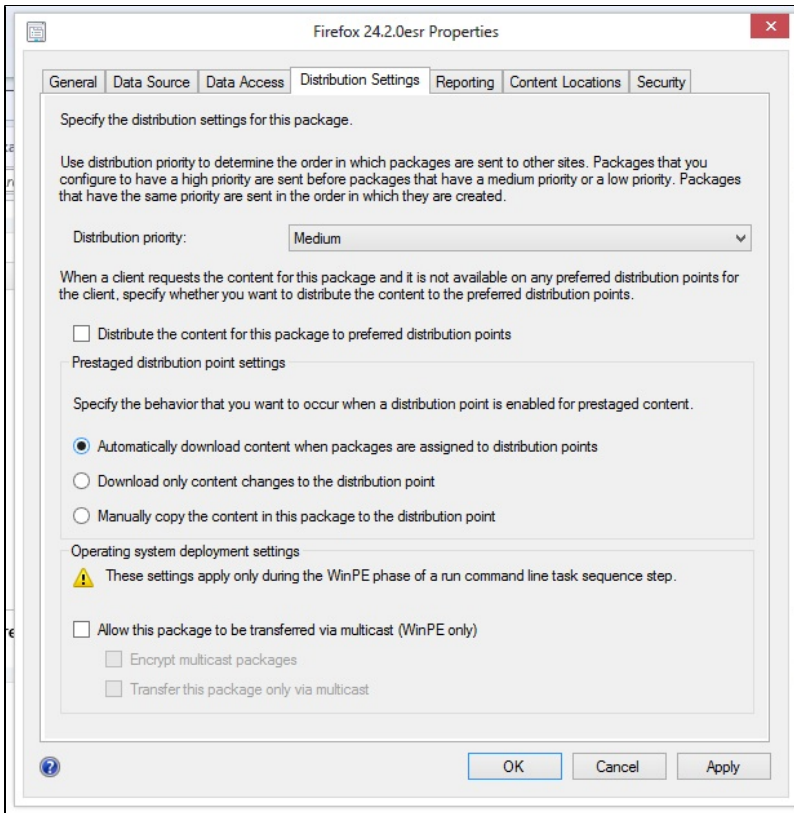
9. You can choose to create alerts based on successful or failed deployment thresholds. This may be particularly useful for required deployments. If you're unsure, simply leave the default settings.



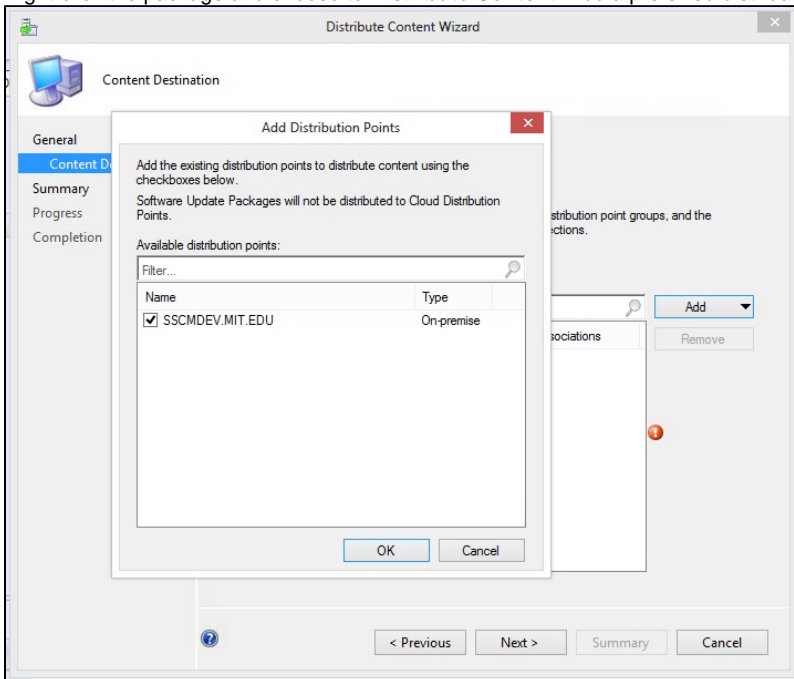
10. At the summary window, click **Next**, watch the progress, and then click **Close**.

Create a Package Deployment

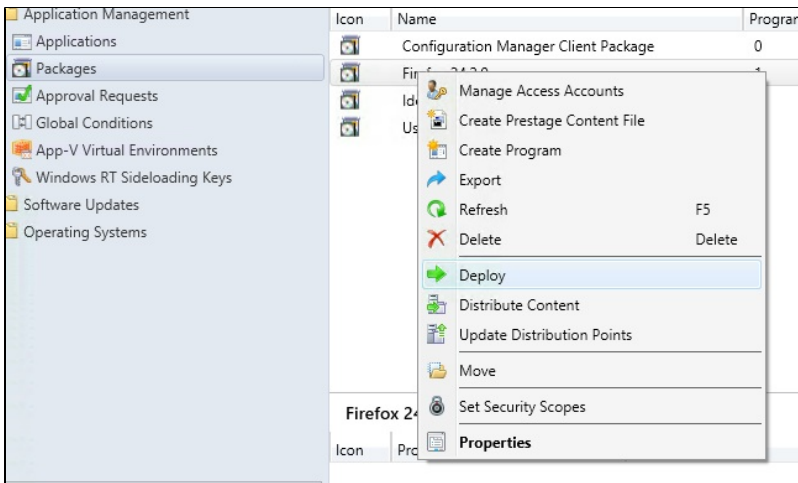
1. Right-click on the newly created package and select **Properties**.
2. Click the **Distribution Settings** tab. Then click the radio button next to **Automatically download content when packages are assigned to distribution points**.



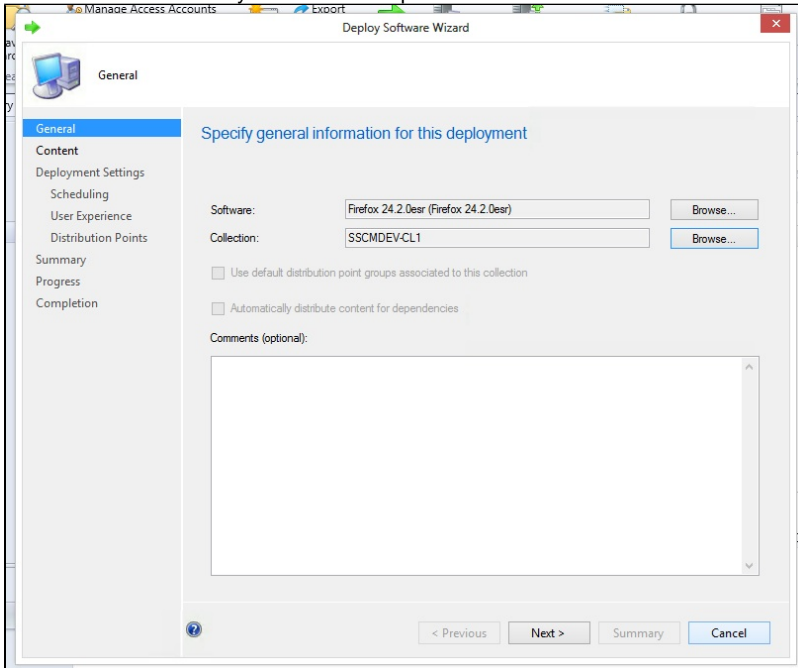
3. Right-click the package and choose to **Distribute Content**. Add a preferred distribution point. Click **OK** and then **Next**.



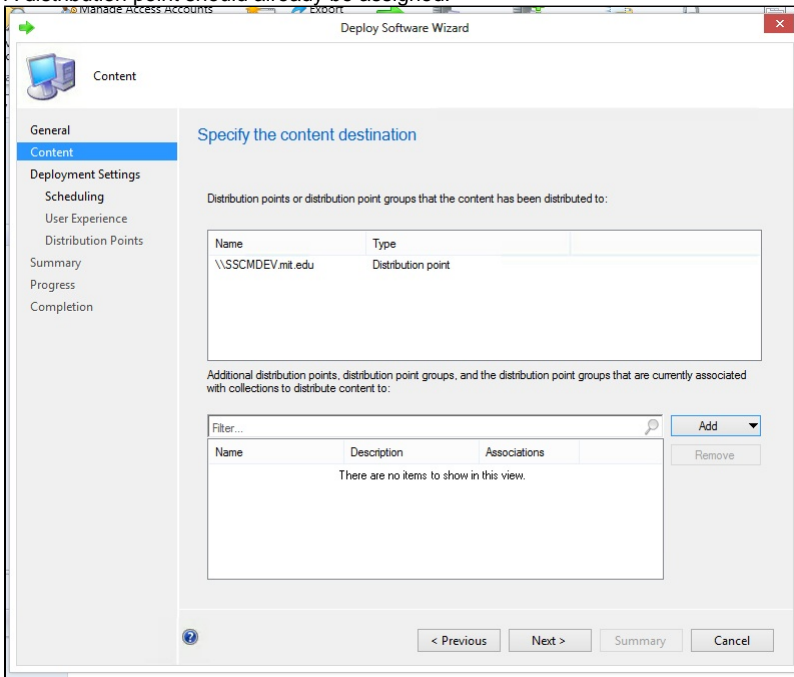
4. Right-click the package and choose to **Deploy**.



5. Choose a collection that you would like to push the software to.



A distribution point should already be assigned.

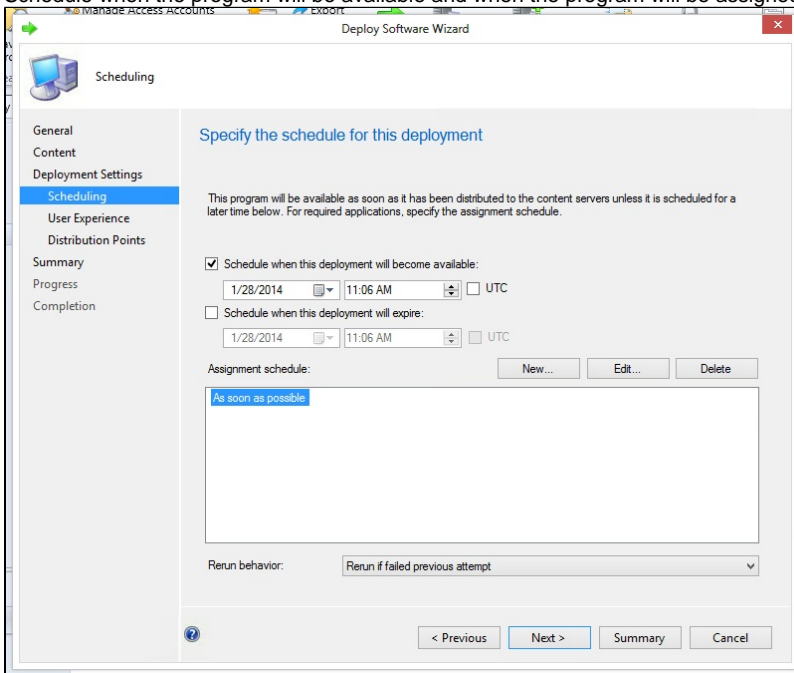


The screenshot shows the 'Content' tab of the 'Deploy Software Wizard'. The left sidebar lists 'General', 'Content', 'Deployment Settings', 'Scheduling', 'User Experience', 'Distribution Points', 'Summary', 'Progress', and 'Completion'. The 'Content' tab is selected. The main area is titled 'Specify the content destination'. It contains a table with the following data:

Name	Type
\\SSCMDEV.mit.edu	Distribution point

Below the table, it says 'Additional distribution points, distribution point groups, and the distribution point groups that are currently associated with collections to distribute content to:'. There is a search filter box and an 'Add' button. Below that is another table with columns 'Name', 'Description', and 'Associations'. It says 'There are no items to show in this view.' and has a 'Remove' button. At the bottom are buttons for '< Previous', 'Next >', 'Summary', and 'Cancel'.

6. Schedule when the program will be available and when the program will be assigned.



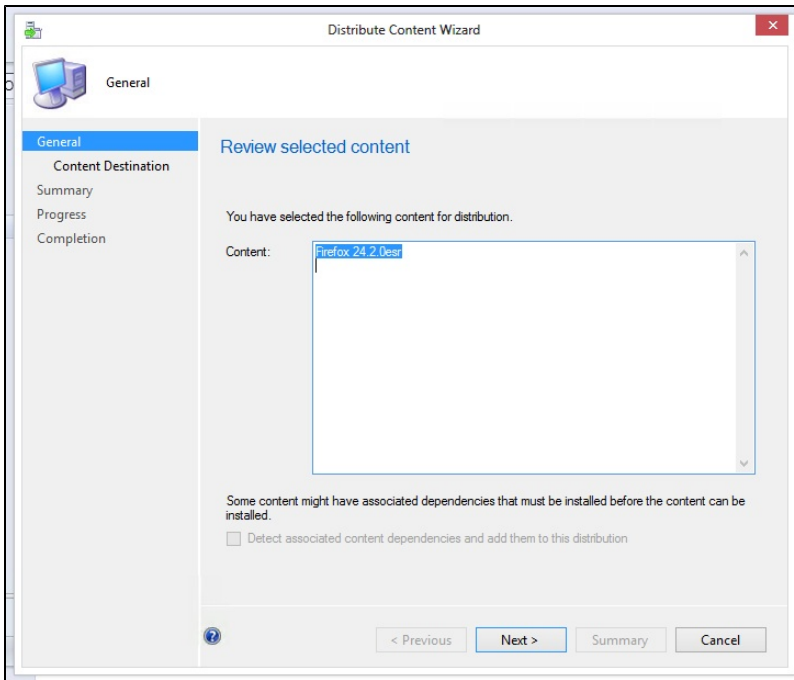
The screenshot shows the 'Scheduling' tab of the 'Deploy Software Wizard'. The left sidebar is the same as the previous screenshot, but 'Scheduling' is now selected. The main area is titled 'Specify the schedule for this deployment'. It contains the following text: 'This program will be available as soon as it has been distributed to the content servers unless it is scheduled for a later time below. For required applications, specify the assignment schedule.'

There are two checkboxes for scheduling:

- ☒ Schedule when this deployment will become available: 1/28/2014 11:06 AM UTC
- ☐ Schedule when this deployment will expire: 1/28/2014 11:06 AM UTC

Below these is the 'Assignment schedule' section with 'New...', 'Edit...', and 'Delete' buttons. A list box shows 'As soon as possible'. At the bottom is the 'Rerun behavior' dropdown set to 'Rerun if failed previous attempt'. At the very bottom are buttons for '< Previous', 'Next >', 'Summary', and 'Cancel'.

7. Click **Next** through the wizard until you finish. The program will install the package at the time you've designated.



See Also

- [Microsoft Endpoint Configuration Manager \(MECM\) Landing Page](#)