

# SDM Frequently Asked Questions

## SDM Frequently Asked Questions

On this page:

How do I access the SDM Application?

Help with Java 7 issues

How do I retrieve a value from SDM back to the MITSIS form?

How do I know if the Mitsis form I use has been converted to the SDM application?

I get a security dialog box in Mitsis when I try to access SDM, what should I do?

Help with Java 7 issues

## How do I access the SDM Application?

Users who have access to Mitsis Oracle forms by default will have view access to the SDM application and SDM converted forms.

Mitsis users can access the SDM application at <https://sis-data-maint.mit.edu/sdm>

## Help with Java 7 issues

Access MITSIS after updating to Java 7u51 or higher

## How do I retrieve a value from SDM back to the MITSIS form?

1. The Mitsis user is using a valid form that calls an SDM form and uses list field value keystroke (Shift F3)

Form: STVTERM M1.0 SUNSEA2 INFORMATION SYSTEM 10-MAR-14 06:43:58

TERM CODE VALIDATION FORM Page 1 of 1

Term	Description	Academic Year	Start Date	End Date	Financial Aid Year
2014SU	Summer Term 2014	2014	09-JUN-2014	01-SEP-2014	2015
	Housing Dates: Start	11-JAN-1911	End: 11-JAN-1911	Change Date: 10-NOV-2011	
2014SP	Spring Term 2013-2014	2014	03-FEB-2014	08-JUN-2014	2014
	Housing Dates: Start	03-FEB-2014	End: 18-MAY-2014	Change Date: 10-NOV-2011	
2014JA	January Term 2013-2014	2014	06-JAN-2014	02-FEB-2014	2014
	Housing Dates: Start	11-JAN-1911	End: 11-JAN-1911	Change Date: 10-NOV-2011	
2014FA	Fall Term 2013-2014	2014	03-SEP-2013	05-JAN-2014	2014
	Housing Dates: Start	03-SEP-2013	End: 16-DEC-2013	Change Date: 05-MAR-2014	
	Housing Dates: Start		End:	Change Date:	
	Housing Dates: Start		End:	Change Date:	
	Housing Dates: Start		End:	Change Date:	
	Housing Dates: Start		End:	Change Date:	

or

The Mitsis user selects the Edit Menu and Display List from a MITSIS Oracle form to find a value for that field.

The screenshot shows the 'TERM CODE VALIDATION FORM' with a menu bar (Action, Edit, Query, Block, Record, Field, Help, Window) and a toolbar. The 'Edit' menu is open, showing options like Cut, Copy, Paste, and 'Display List...'. The form displays a table of term codes with columns for Term, Description, Academic Year, Start Date, End Date, and Financial Aid Year. The table includes rows for 2014SU, 2014SP, 2014JA, and 2014FA, each with associated housing dates and change dates.

Term	Description	Academic Year	Start Date	End Date	Financial Aid Year
2014SU	Summer Term 2014	2014	09-JUN-2014	01-SEP-2014	2015
Housing Dates: Start 11-JAN-1911 End: 11-JAN-1911 Change Date: 10-NOV-2011					
2014SP	Spring Term 2013-2014	2014	03-FEB-2014	08-JUN-2014	2014
Housing Dates: Start 03-FEB-2014 End: 18-MAY-2014 Change Date: 10-NOV-2011					
2014JA	January Term 2013-2014	2014	06-JAN-2014	02-FEB-2014	2014
Housing Dates: Start 11-JAN-1911 End: 11-JAN-1911 Change Date: 10-NOV-2011					
2014FA	Fall Term 2013-2014	2014	03-SEP-2013	05-JAN-2014	2014
Housing Dates: Start 03-SEP-2013 End: 16-DEC-2013 Change Date: 05-MAR-2014					
Housing Dates: Start End: Change Date:					
Housing Dates: Start End: Change Date:					
Housing Dates: Start End: Change Date:					
Housing Dates: Start End: Change Date:					

2. The SDM validation form it calls is displayed with a list of values.

The screenshot shows the 'SDM - List' window with a title bar and a close button. The window displays a table of academic years with columns for Year, Description, Required, and Activity Date. The table includes rows for 0000, 1111, 1931, 1932, 1933, and 1934. The window also has a search field and a 'Go Back' button.

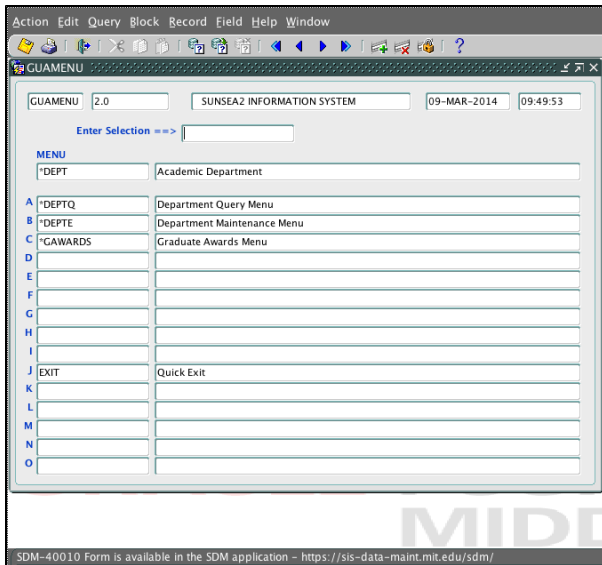
Year	Description	Required	Activity Date
0000	Beginning of Time		21 Jan 1994
1111	Academic Year -- pre-1930		27 Oct 1994
1931	Academic Year 1930-1931		27 Oct 1994
1932	Academic Year 1931-1932		27 Oct 1994
1933	Academic Year 1932-1933		27 Oct 1994
1934	Academic Year 1933-1934		27 Oct 1994

3. The Mitsis user selects the record they wish to work with from the form.
4. The Mitsis user selects the value to retrieve and clicks on that value.
5. The overlay window for the SDM form is closed and the user is returned to the MITSIS form with value populated in field.

## How do I know if the Mitsis form I use has been converted to the SDM application?

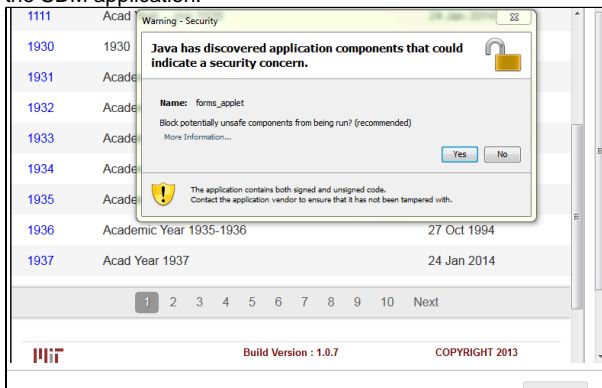
See the screenshot below for the message that will appear in the footer when you are trying to access a Mitsis Oracle form that has been converted in the SDM application. The form is no longer available by typing the form name in the Enter Selection field. You must access SDM directly to view the form.

Or check the list at [Mitsis Forms converted to SDM](#).



## I get a security dialog box in Mitsis when I try to access SDM, what should I do?

For all Java 6 users, you may get a security dialog box when you try to retrieve a value from SDM to bring back to Mitsis the first time you enter the SDM application.



Users must simply click on **No** in the security dialog box to proceed and retrieve the value.



## Help with Java 7 issues

Access MITSIS after updating to Java 7u51 or higher