

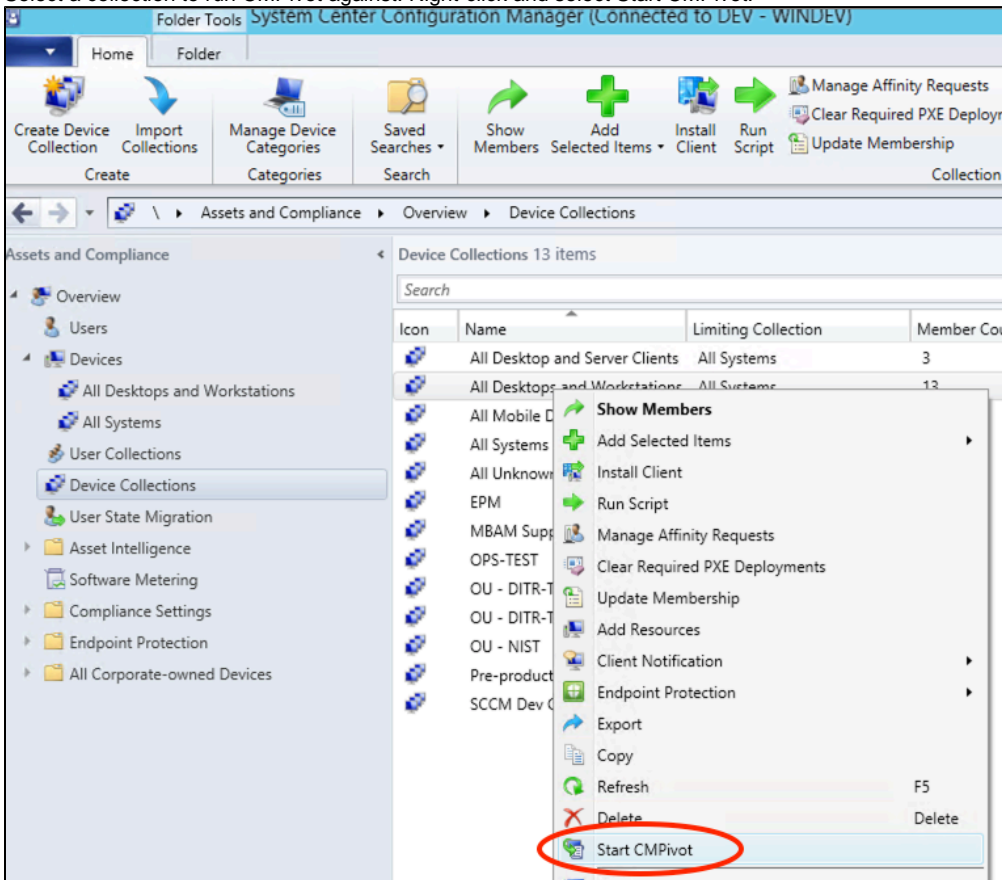
# MECM - SCCM - CMPivot - Real-time Query of Data

## MECM - SCCM - CMPivot - Real-time Query of Data

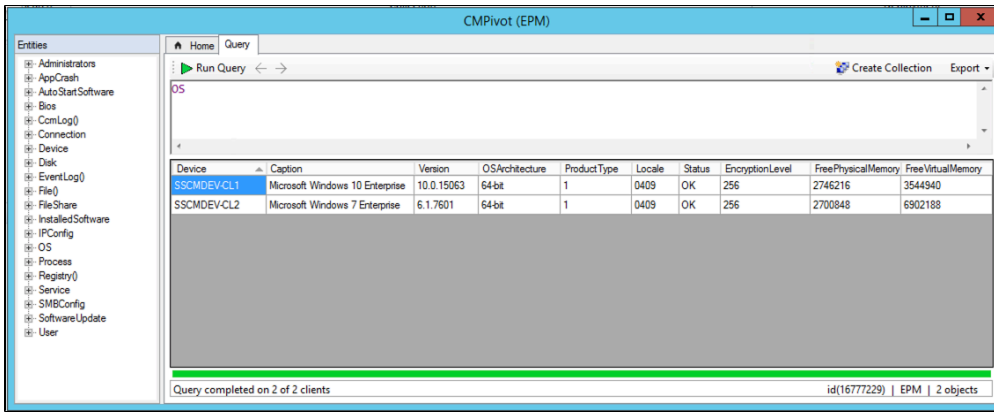
Microsoft has introduced a new feature in MECM that allows you to view real-time data on your client machines by utilizing the ability to run scripts. This new feature is called CMPivot and this article will demo how to view that data.

### Run CMPivot

- Select a collection to run CMPivot against. Right-click and select Start CMPivot.

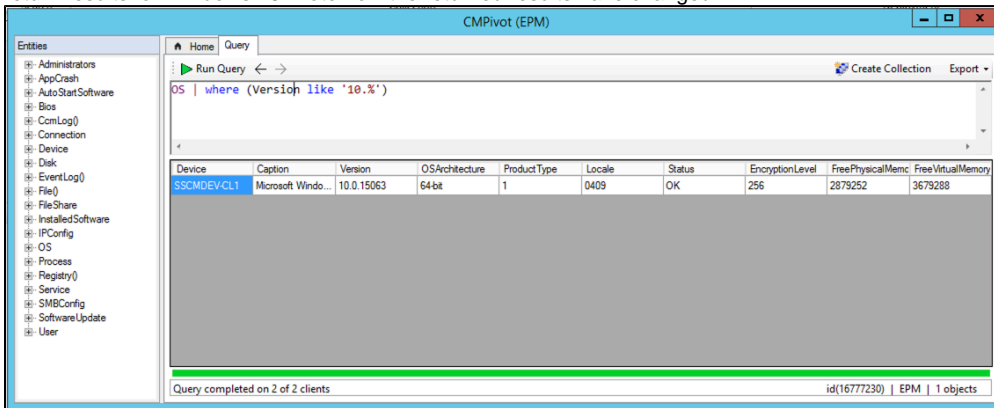


- The "Welcome to CMPivot" window will appear. The **Home** tab provides details on how to create queries. Click the **Query** tab and we can start to create a new query.
- Select one of the available entities to target, Right click on it and select **Insert**. In our example we will look at OS information.

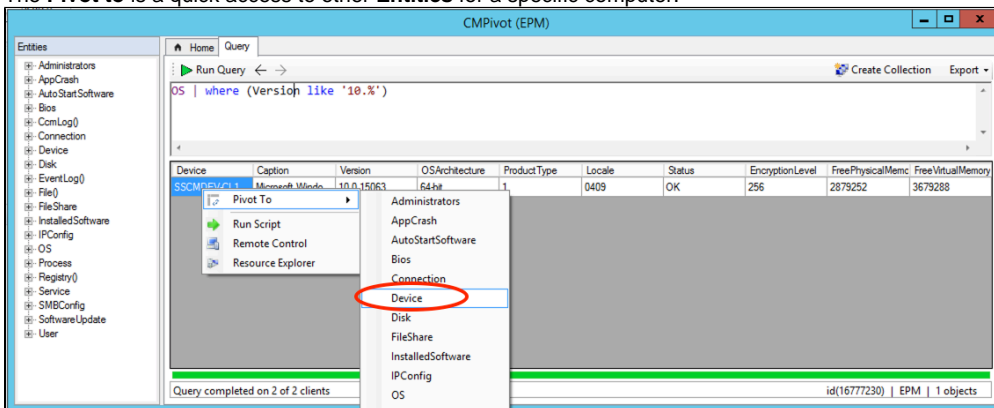


Remember that these scripts are running live on the clients. It may take some time to run the query, so grab a hot beverage and come back in a couple minutes.

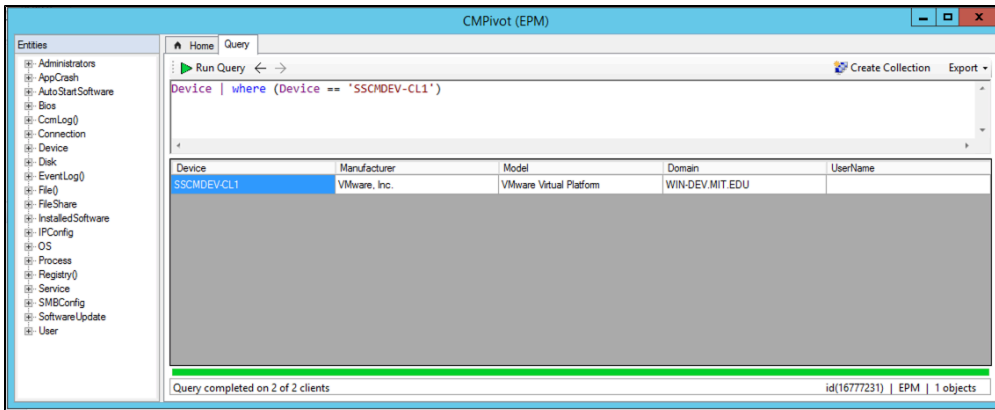
- You can refine the query by using the pipe character. For instance, in your query type **OS | where Version like '10.%'** and this will only return results for Windows 10. Note how the returned results have changed.



- Now that we have a list of computers, the following actions can be performed :
  - Create a collection** based on those computers
  - Pivot to**, which allows seeing other entities in CMPivot for a specific computer
  - Run Script**, this can be run on multiple computers at a time
  - Open the **Resource Explorer** for a specific computer
- The **Pivot to** is a quick access to other **Entities** for a specific computer.



- After selecting **Pivot To -> Device**



For more examples of information you can gather with CMPivot, please read [this article](#).

## See Also

- [Microsoft Endpoint Configuration Manager \(MECM\) Landing Page](#)