

MECM - SCCM - Compliance Settings

MECM - SCCM - Compliance Settings

On this page:

[Overview](#)
[Create a Configuration Item](#)
[Create a Configuration Baseline](#)
[Deploy the Configuration Baseline](#)
[See Also](#)

Overview

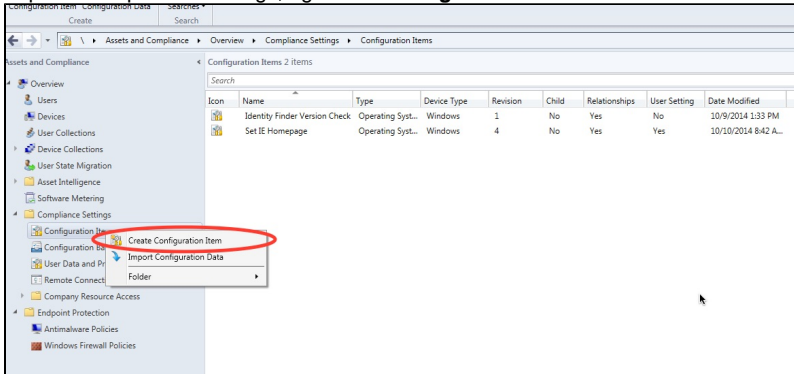
MECM Compliance Settings can be used to ensure clients meet a preconfigured baseline. For instance, if we want to make sure that all clients machines have a particular webpage set for the homepage, we can do this through compliance settings. The example will illustrate how to create a Configuration Item and Configuration Baseline.

Create a Configuration Item

Configuration Items are the individuals settings that you want to set for a particular client. You can simply check for compliance and report back or remediate these settings if they are non-compliant. These configuration items can be grouped into **Configuration Baselines**.

This example will check to see if Javascript is enabled for Adobe Reader and then remediate it if found to be non-compliant.

1. Click **Assets and Compliance** from the left sidebar in the MECM Console.
2. Expand **Compliance Settings**, right click **Configuration Items** and select **Create Configuration Item**.



3. Create a name for the Configuration Item and give it a description. Click **Next**.

Create Configuration Item Wizard

General

Specify general information about this configuration item

Configuration items define a configuration and associated validation criteria to be assessed for compliance on client devices.

Name: Javascript for Adobe Reader 11

Description: Check registry to see if Javascript is enabled for Adobe Reader. The key is found at HKCU\Software\Adobe\Acrobat Reader\11.0\JSPrefs\EnableJS

Specify the type of configuration item that you want to create:

Windows

☐ This configuration item contains application settings

Assigned categories to improve searching and filtering:

Categories...

< Previous Next > Summary Cancel

4. Choose which operating systems you would like to assess for the configuration item.

Create Configuration Item Wizard

Supported Platforms

Specify the client operating systems that will assess this configuration item for compliance

☒ Select the versions of Windows that will assess this configuration item for compliance:

☒ Select all

- ☐ Windows XP
- ☒ Windows Vista
- ☒ Windows 7
- ☒ Windows 8
- ☒ Windows 8.1
- ☐ Windows 2003
- ☐ Windows 2008
- ☐ Windows Server 2012
- ☐ Windows Server 2012 R2
- ☐ Windows Embedded

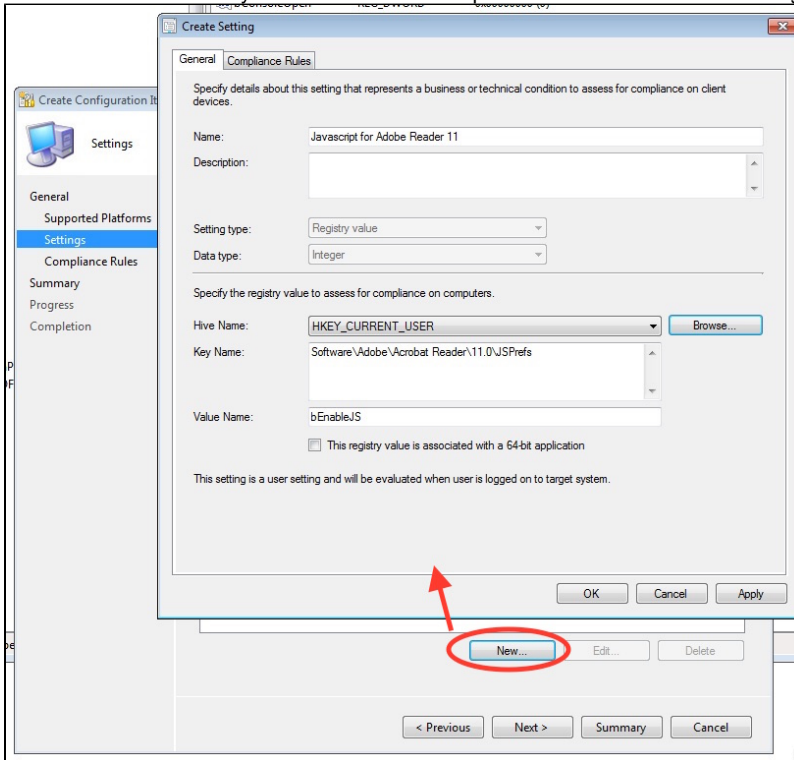
☐ Specify the version of Windows manually:

Add...

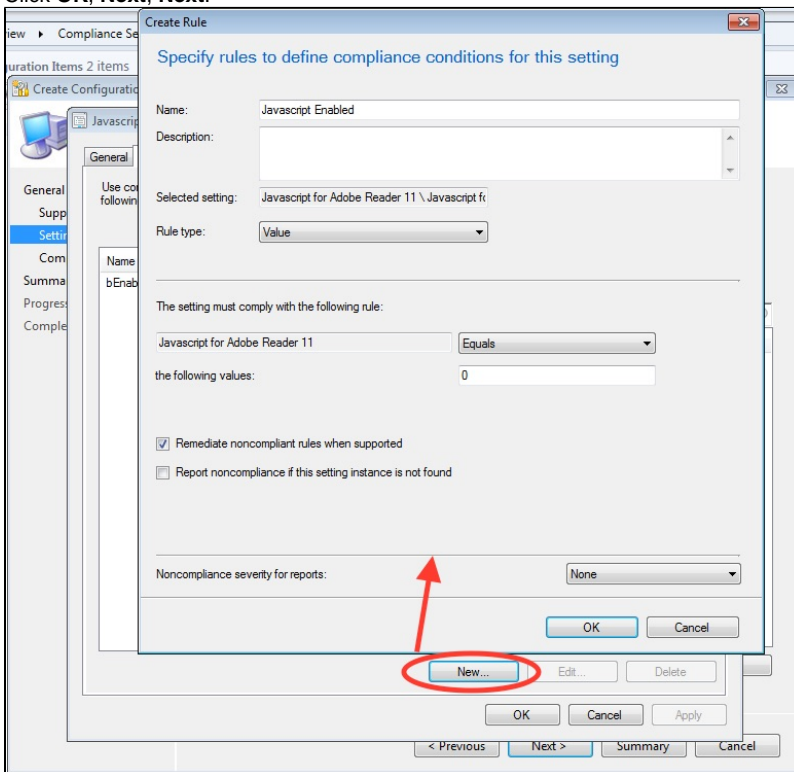
< Previous Next > Summary Cancel

5. Click new to create a new settings for this item. You can browse to the registry setting on the local computer or a remote computer (if enabled). Or you can manually specify the path to the registry setting. Click **OK**. A compliance rule that states that the registry setting

must exist is automatically created. Click the Compliance Rules tab to see the auto-generated rule.



6. Now that we are in the compliance rules section we will create a second compliance rule for this configuration item. Click **New** and you will get a window for a new setting which is based off the existing registry key. We can now specify that this key has a particular value. Choose to **remediate noncompliant rules when supported**. In this case, if the value of the reg key is 1, then it will be changed to 0. Click **OK, Next, Next**.

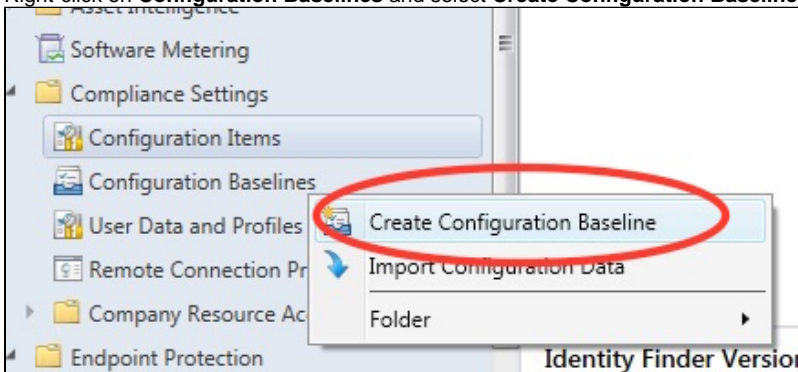


7. Click **Next** as we've already defined the compliance rules and then **Next** again at the summary page. Click **Close** at the completion page.

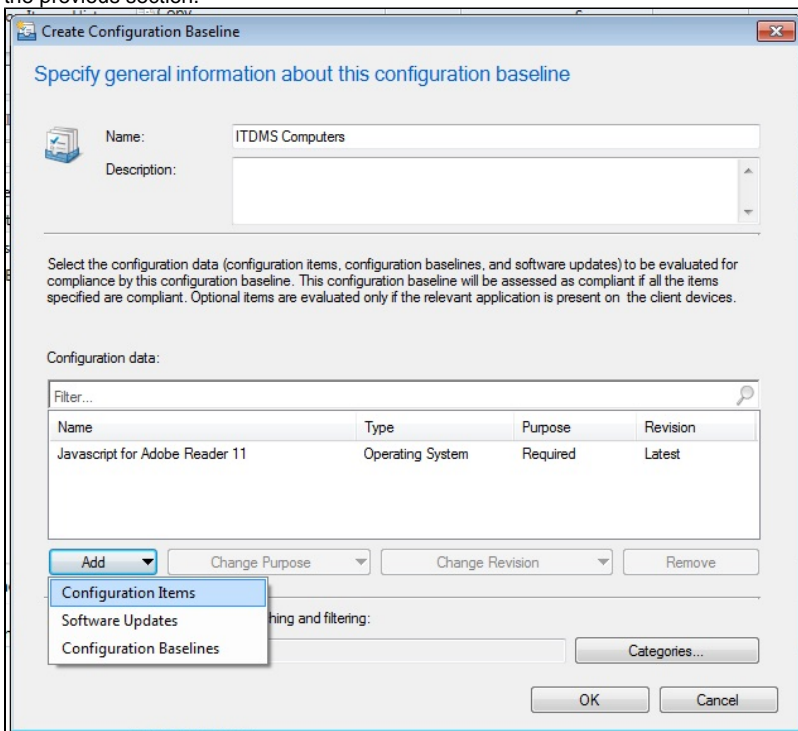
Create a Configuration Baseline

Now that we've created a configuration item, we need to add it to a **Configuration Baseline** in order to deploy it to a client machine.

1. Right-click on **Configuration Baselines** and select **Create Configuration Baseline**.



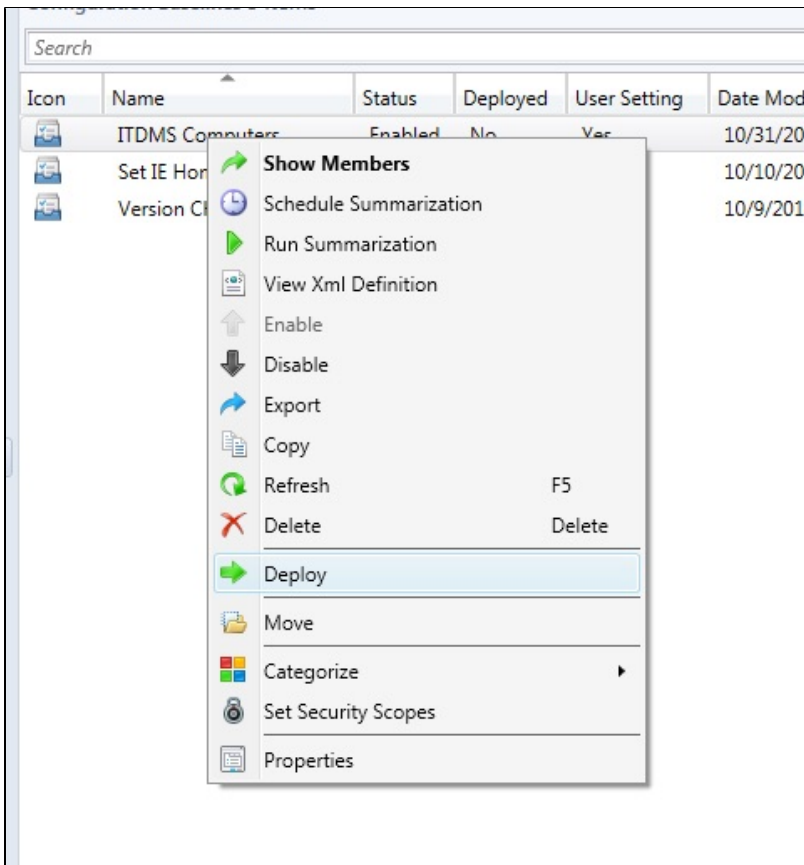
2. Give your new configuration baseline a name and click **Add > Configuration Items** to pick and choose the CIs that you would like to include in the configuration baseline. You can add multiple CIs to a configuration baseline. This example will add the Javascript item from the previous section.



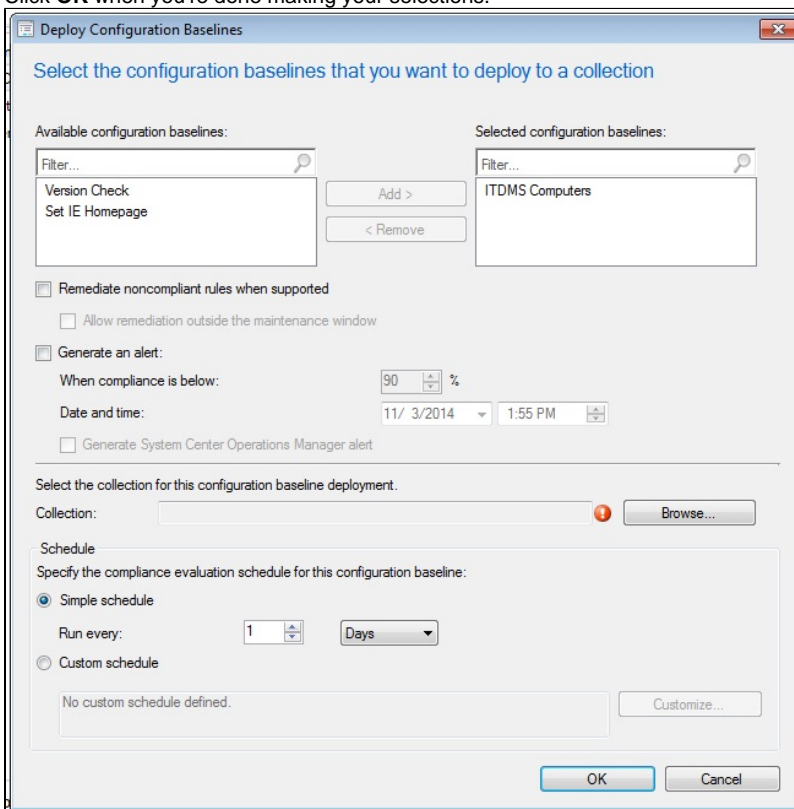
Deploy the Configuration Baseline

The configuration baseline you've created will not be effective until you've deployed it to your target collection.

1. Right-click on the baseline and select **Deploy** from the contextual menu.



- The selected baseline will already be added and ready to be deployed. If you'd like to select additional baselines to deploy, you can do so now. You can also choose a schedule to evaluate the compliance settings.
- Click **OK** when you're done making your selections.



See Also

- [Microsoft Endpoint Configuration Manager \(MECM\) Landing Page](#)