


# Enable FileVault (whole disk encryption) on OS X 10.8


## Enable FileVault (whole disk encryption) on OS X 10.8

### Primer

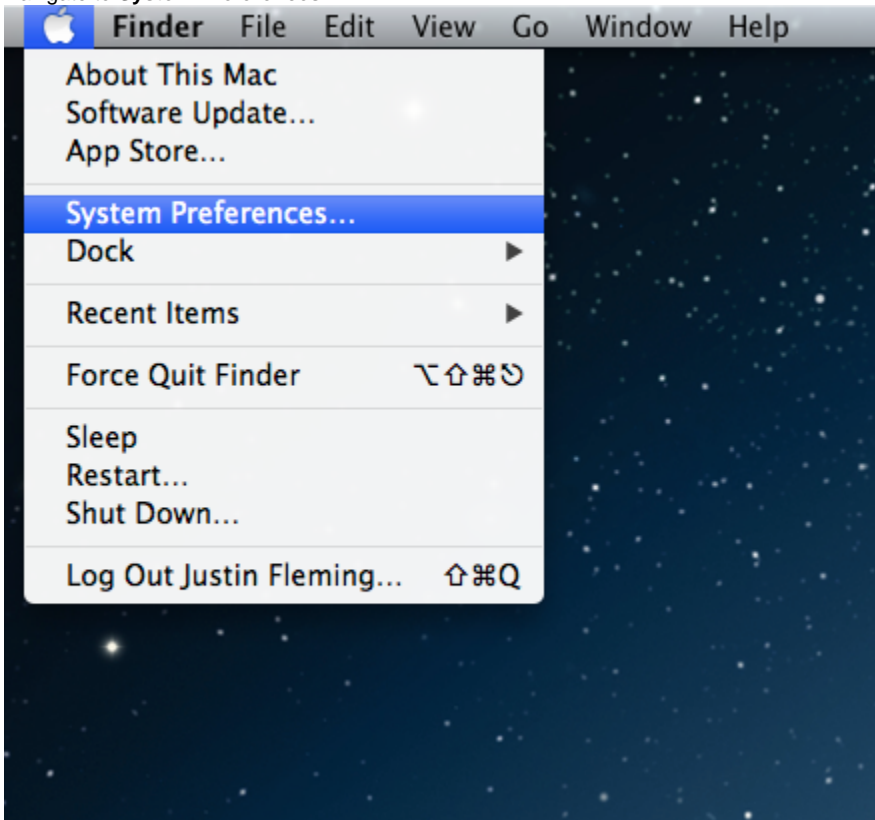
- FileVault 2 in Mac OS X 10.8 (Mountain Lion) is based on a [whole disk encryption \(WDE\)](#) schema.
- This feature provides added security for data stored on a computer's disk.

 Please consult with your System Administrator before enabling FileVault on your machine.

### Instructions

 Before enabling FileVault 2, it is important to make sure that PGP (if used before) is completely uninstalled. If you are not sure if PGP was used on your machine before, please consult your system administrator. [Instructions on how to manually remove PGP from OS X](#). If you run into any issues, please contact the [IS&T Help Desk](#).

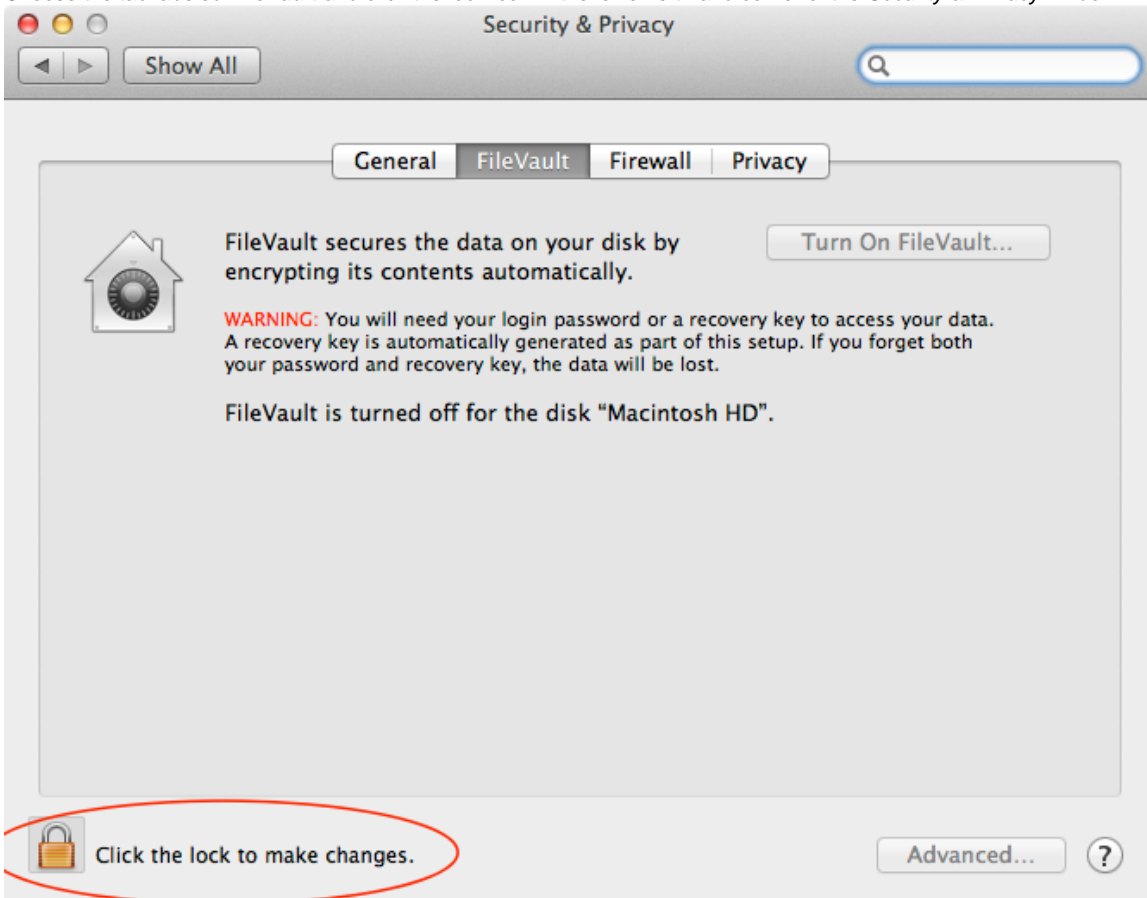
1. Navigate to **System Preferences**.



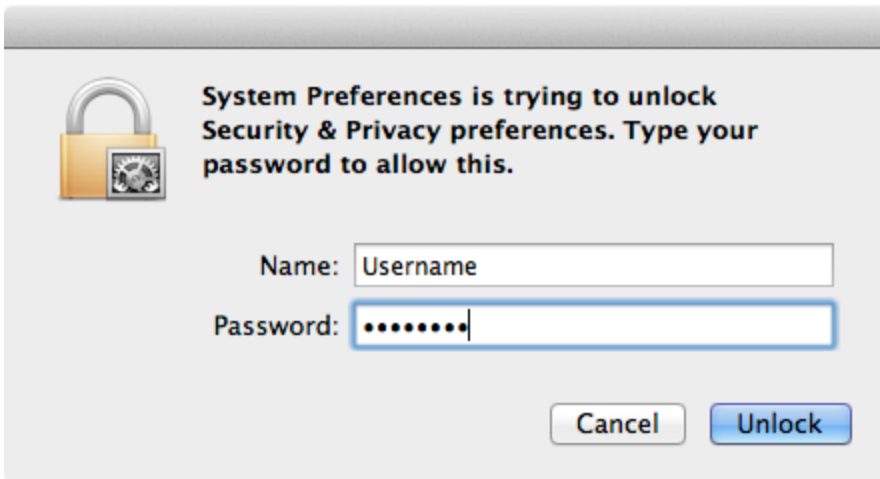
2. Select **Security & Privacy** from the main System Preferences window.



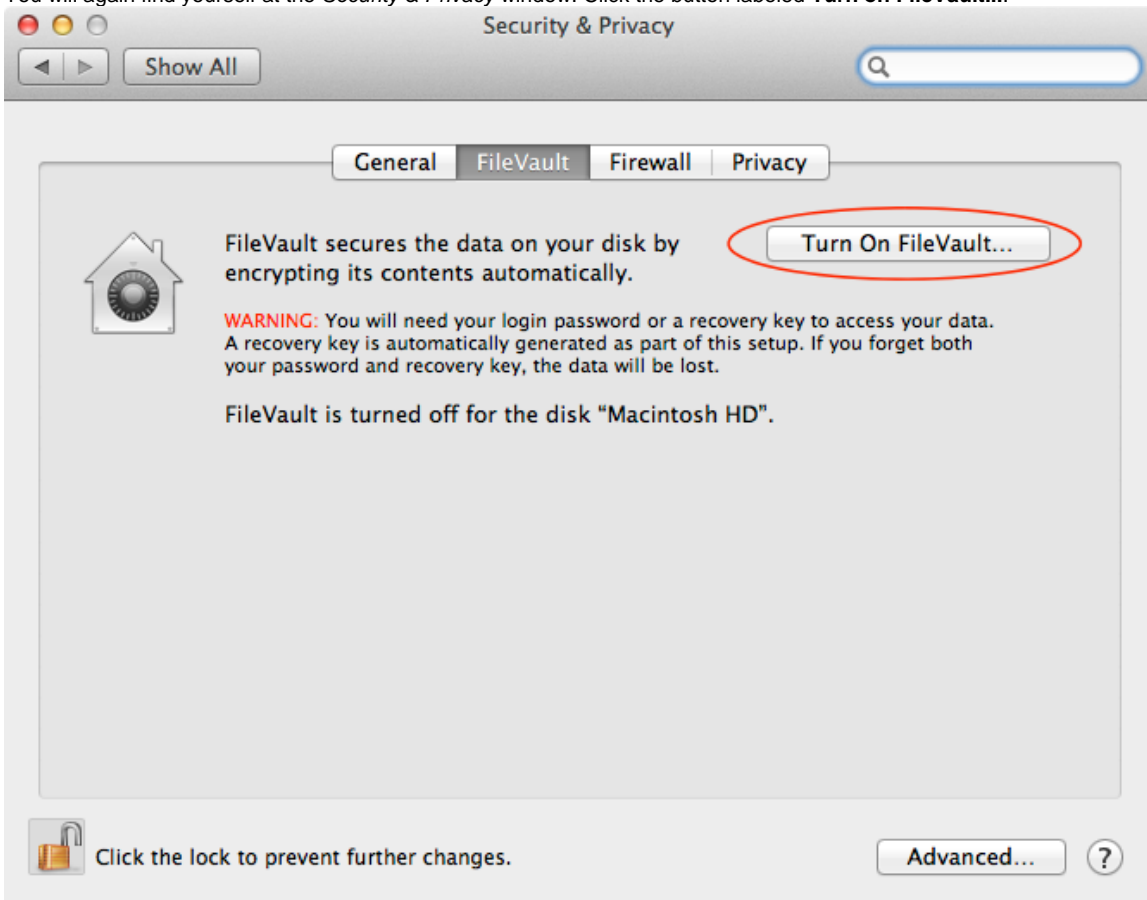
3. Choose the tab labeled **FileVault** and click the lock icon in the lower left-hand corner of the *Security & Privacy* window.



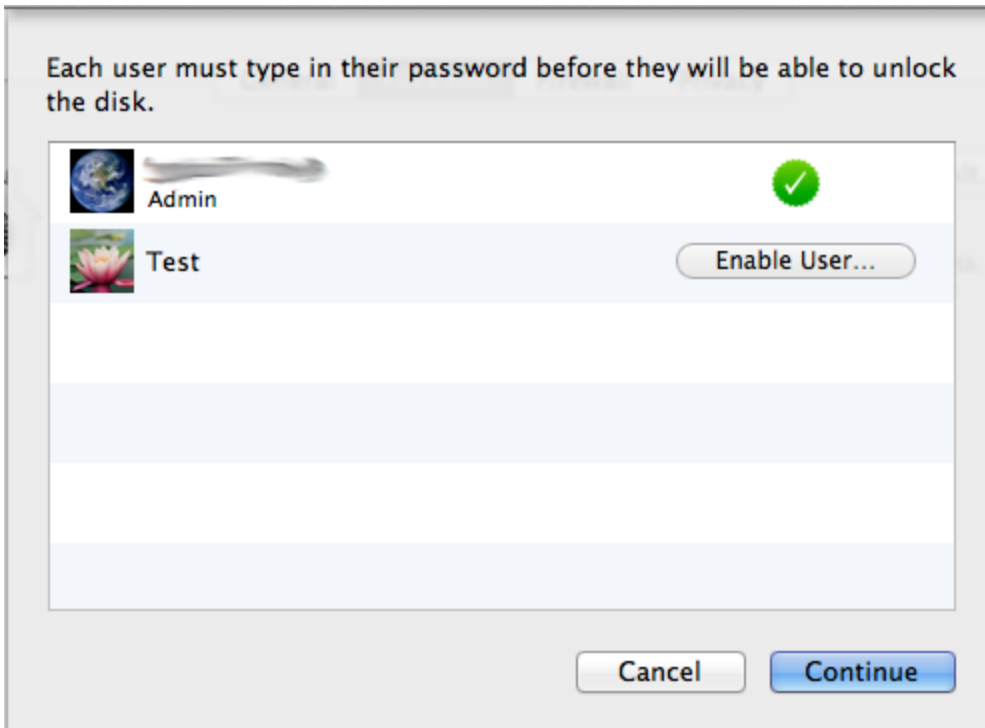
4. When prompted, authenticate with your user account username and password.



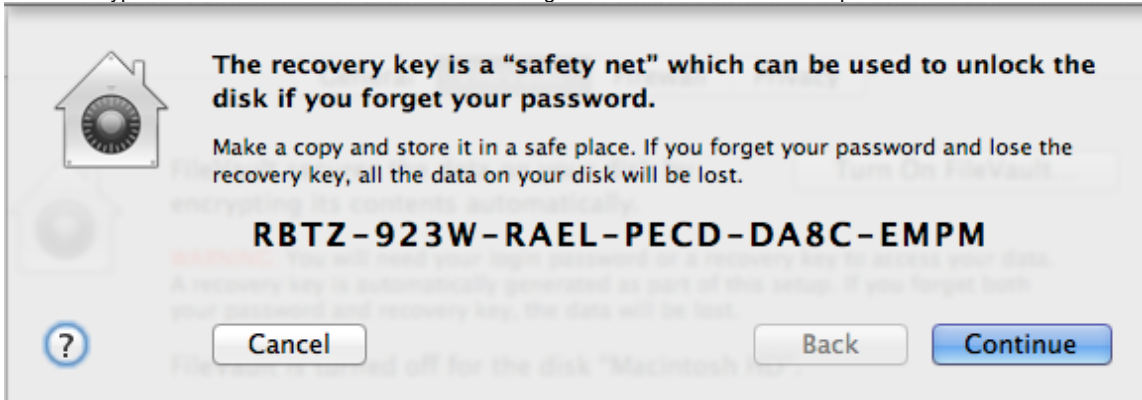
5. You will again find yourself at the *Security & Privacy* window. Click the button labeled **Turn on FileVault...**



6. If there are multiple users accounts on this machine you will be prompted to give additional users access. All users that need the ability to use this machine should be given disk access-rights by clicking the button labeled **Enable user...**, entering that user's password, and clicking the button labeled **Continue**.



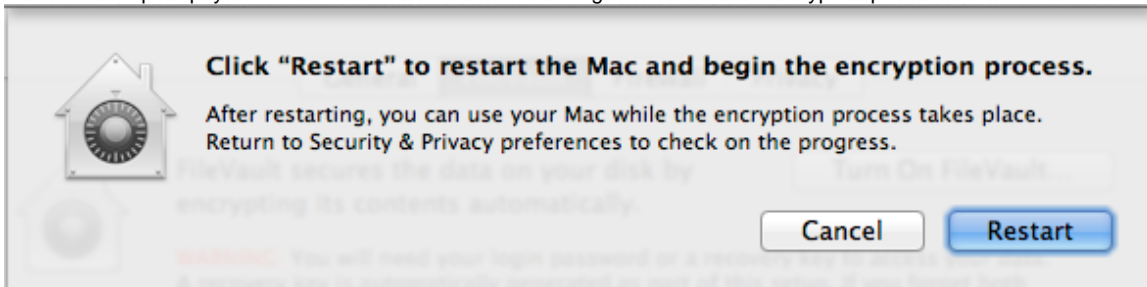
7. The following screen will display the disk's recovery key. If a disk password is lost or forgotten this is the **ONLY WAY** to recover the data on the encrypted disk. Please write this 24 character string down and store it in a secure place. Click the button labeled **Continue**.



8. Mac OS X 10.8 (Mountain Lion) will display a prompt asking if you wish to store your recovery key with Apple. Select the radio button labeled **Do not store the recovery key with Apple** and click the button labeled **Continue**.



9. OS X will now prompt you to restart to enable FileVault and begin the whole disk encryption process. Click **Restart**.



10. The login process now takes place when OS X reboots. This authentication serves two purposes: it unlocks the disk and logs the selected user in.
11. Upon reboot, the *Security & Privacy* window will open again and display the amount of time remaining until the disk is fully encrypted. The machine can be used during this time period.

