

# TSM 6 for Windows - Installation

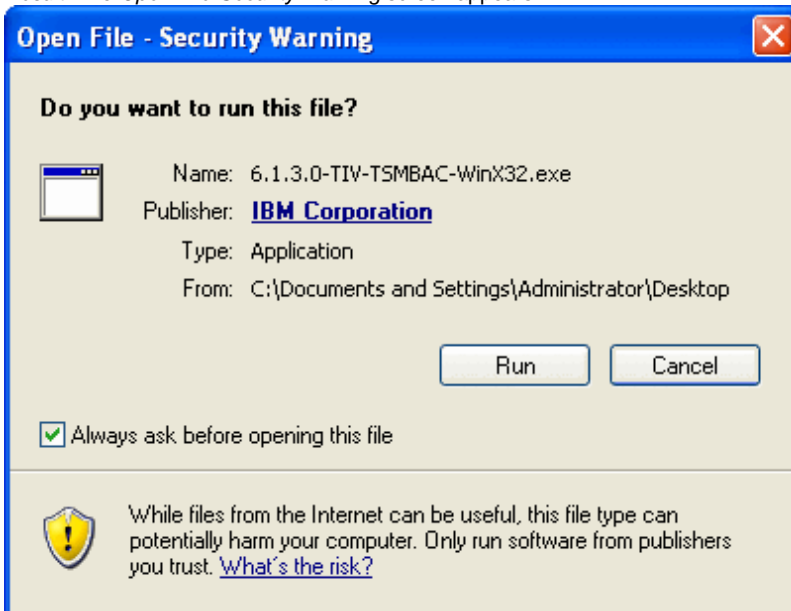
## TSM 6 for Windows - Installation

### Before You Begin

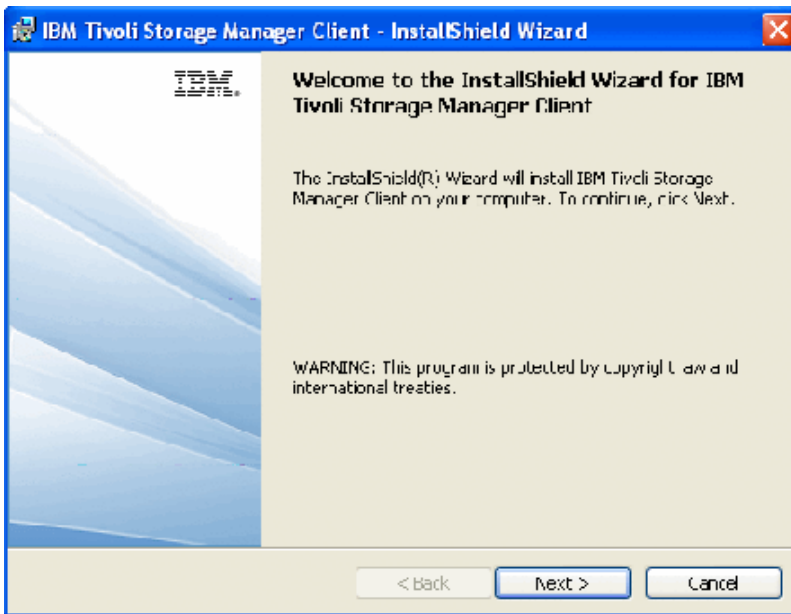
1. If TSM was installed from a domain container (opt-in), [follow these directions].
2. Before launching the TSM 6 Windows installer, you have to stop your TSM scheduler:
  - a. Go to **Control Panel > Administrative Tools > Services** and stop the TSM Scheduler service.
  - b. Install TSM 6 for Windows.
  - c. When the upgrade is complete, restart the scheduler.
3. Before upgrading your operating system, be sure to:
  - a. Uninstall any previous versions of TSM.
  - b. Install the operating system.
  - c. Install TSM 6 for Windows.

### Installing

1. Complete all TSM download and installation tasks using an account with Administrator privileges.
2. On the [MIT Software for Windows](#) page, under Backup, select **TSM 6**. ([Certificates](#) required.)
3. Download the installer file to a convenient location on your computer.
4. Find the downloaded TSM installer file, mit-tsm-6.1.exe, and double click to start it.  
*Result:* The *Open File-Security Warning* screen appears.

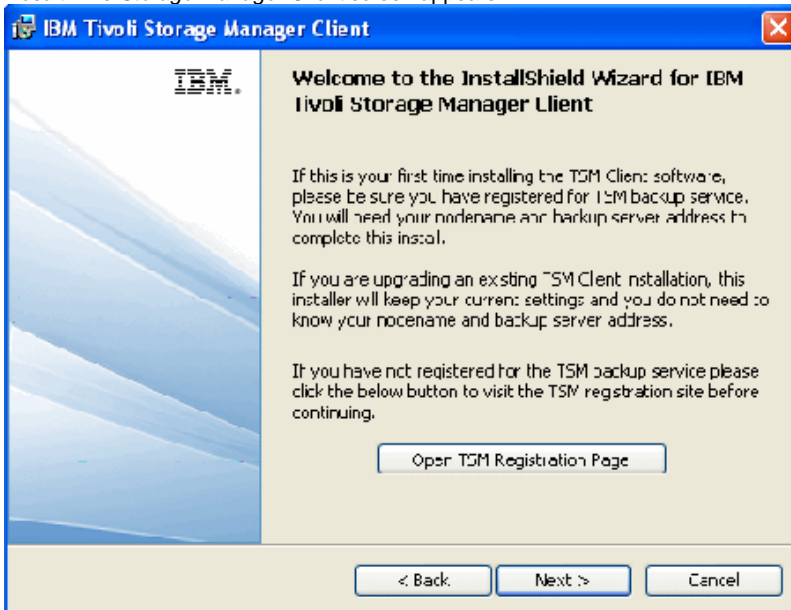


5. Click **Run**.  
*Result:* The installer files unzip, and the InstallShield Wizard for TSM starts with a Welcome screen.



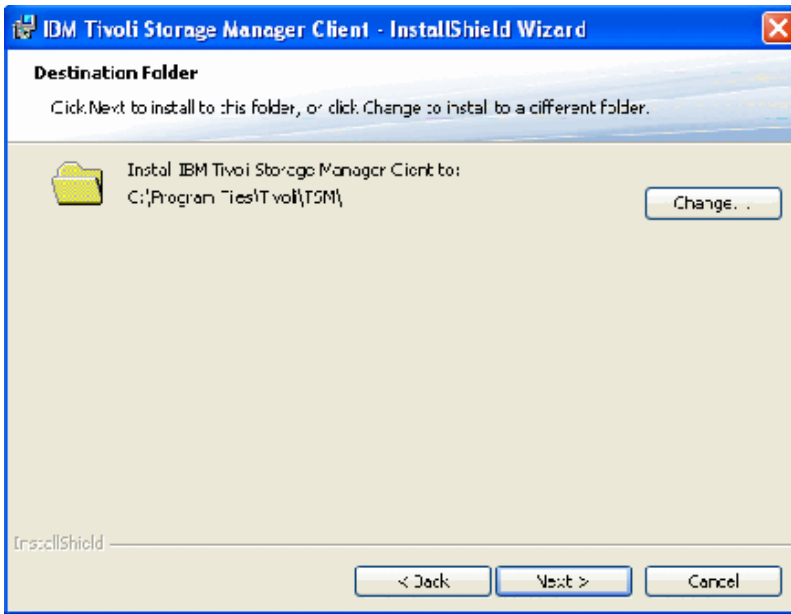
6. Click **Next**.

*Result:* The *Storage Manager Client* screen appears.

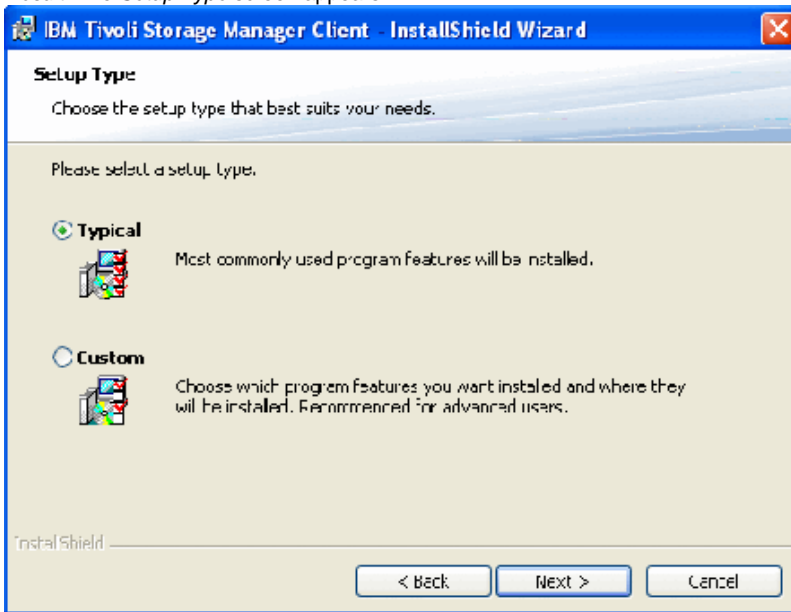


7. Click **Next**.

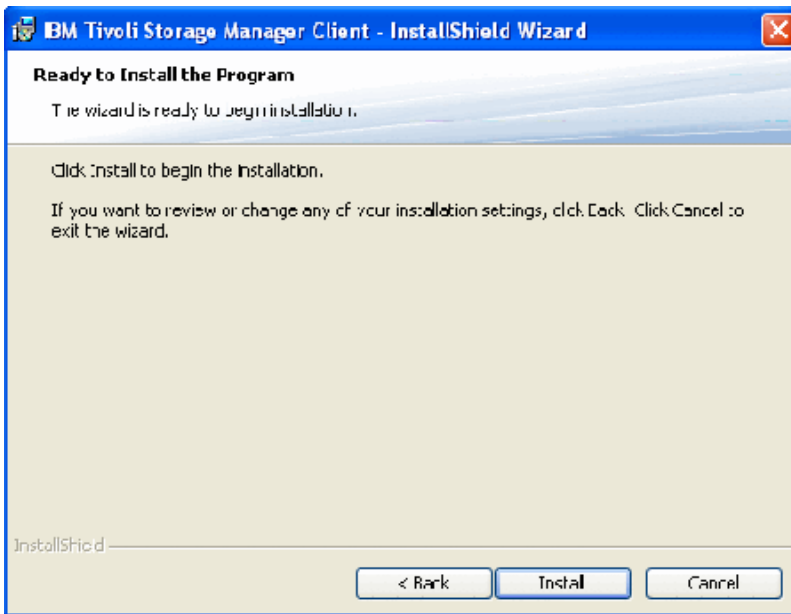
*Result:* The *Destination Folder* screen appears.



8. Click **Next** to accept the default installation location, C:\Program Files\Tivoli\TSM.  
*Result:* The *Setup Type* screen appears.

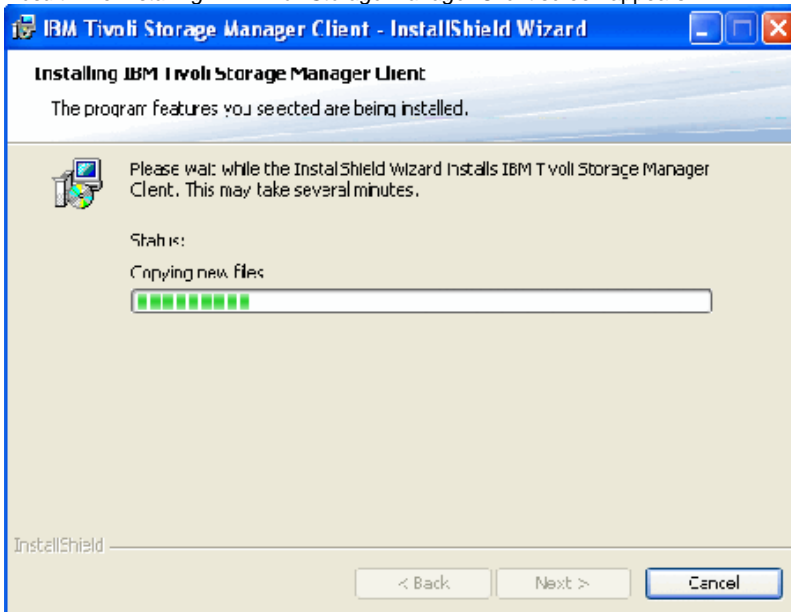


9. Click **Next** to accept the default installation type, "Typical".  
*Result:* The Ready to Install the Program screen appears.

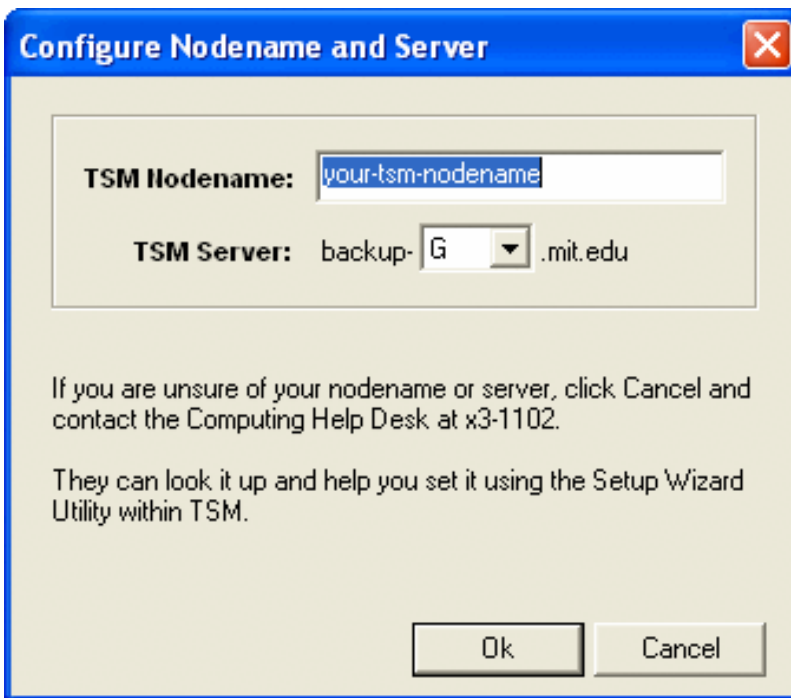


10. Click **Install**.

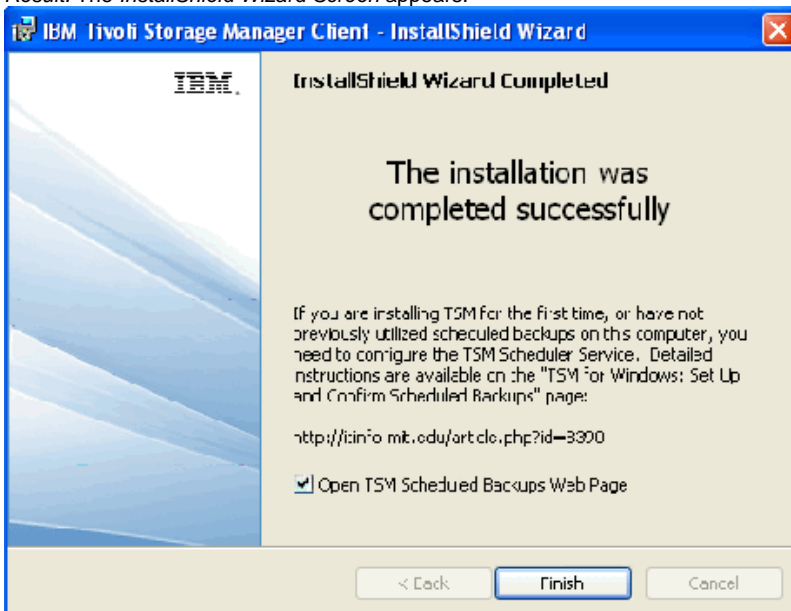
*Result:* The *Installing IBM Tivoli Storage Manager Client* screen appears.



*Result:* The *Configure Nodename and Server* screen appears.



11. Select or confirm your assigned node name and server and click **OK**.  
**Note:** The **Open TSM Scheduled Backups Web Page** box is checked.  
**Result:** The *InstallShield Wizard Screen* appears.



12. Click **Finish**.

After you have installed TSM, learn how to login for the first time and set up your scheduler:

- [TSM 6 for Windows: First-Time Login](#)
- [TSM 6 for Windows: Set up and Confirm Scheduled Backups](#)