

How can I use Application Lifecycle Management (ALM) without using Internet Explorer?

How can I use Application Lifecycle Management (ALM) without using Internet Explorer?

There are two options:

Option 1 - ALM Explorer (Without using any Browser)

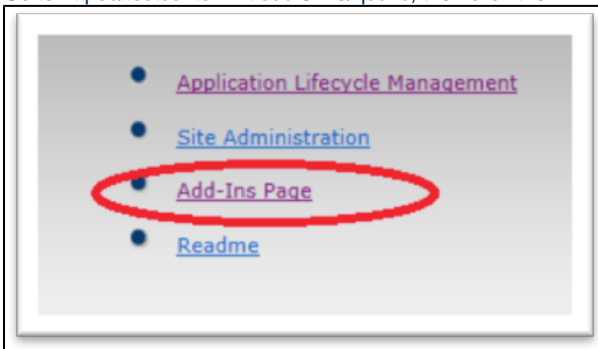
Option 2 - Chrome with IE Extension

Option 1 – ALM Explorer (Without using any Browser)

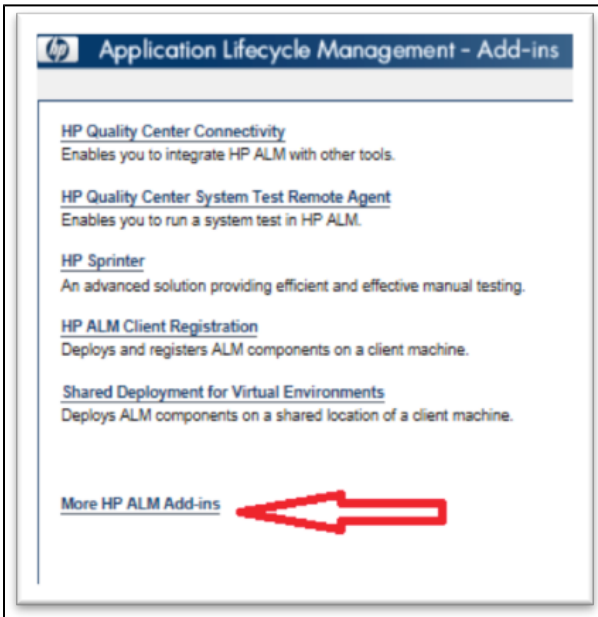
You need to have administrative rights for your machine.

Download ALM Explorer (Registration required). This enables HP ALM client users to run HP ALM outside of a browser interface:

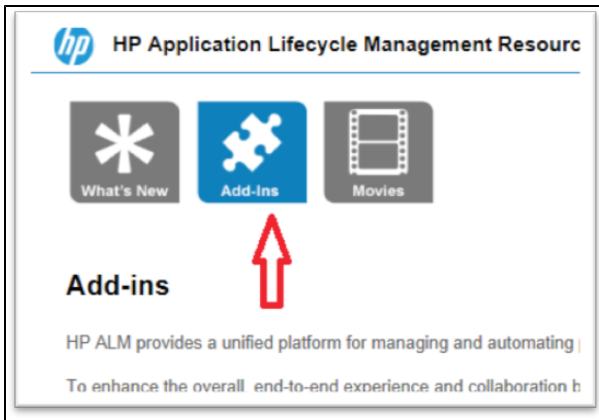
1. Go to <https://testcenter.mit.edu:8443/qcbin/>, then click the link **Add-Ins Page**.



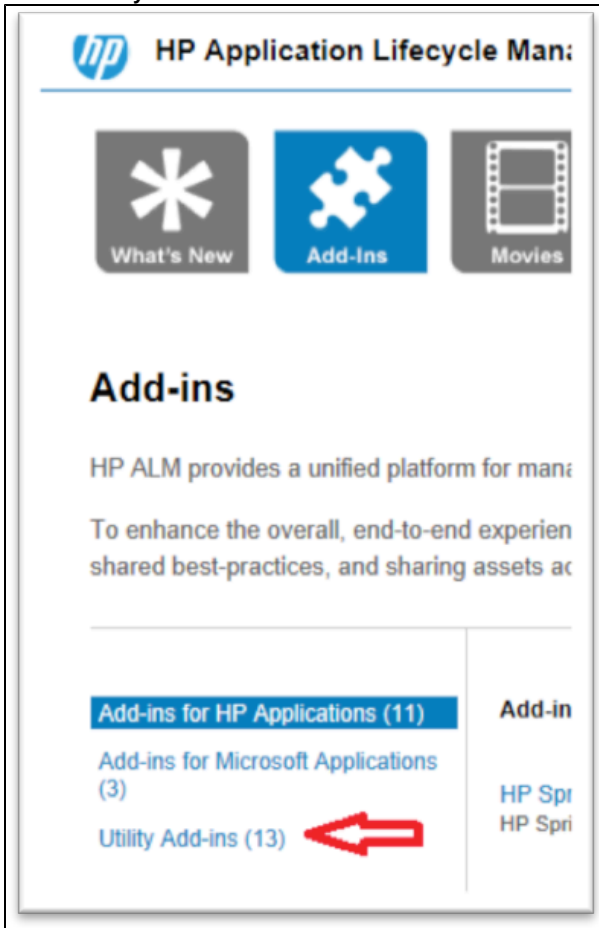
2. Click on **More HP ALM Add-Ins**.



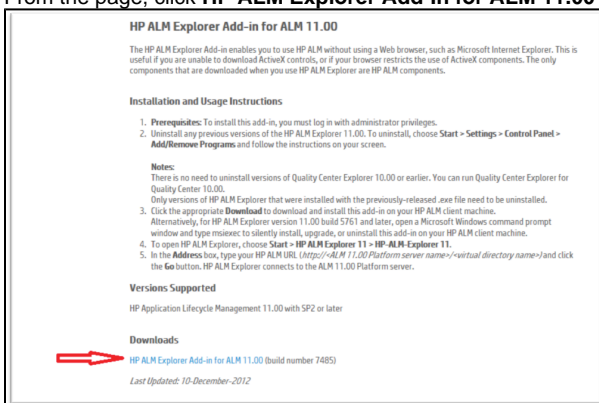
3. Select **Add-Ins**.



4. Click on **Utility Add-Ins**.



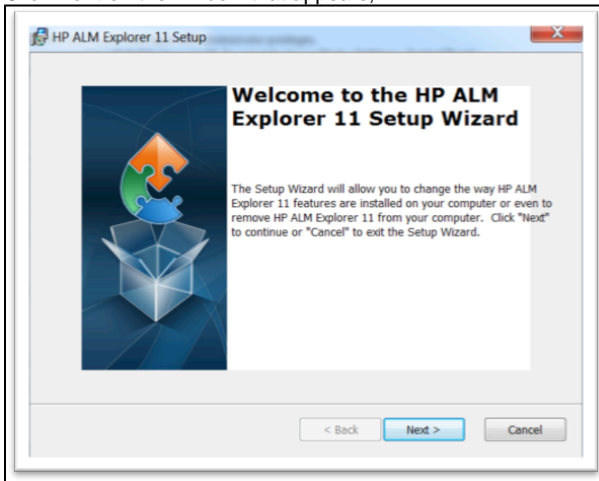
5. From the list, select **HP ALM Explorer**.
6. From the page, click **HP ALM Explorer Add-In for ALM 11.00** to download it.



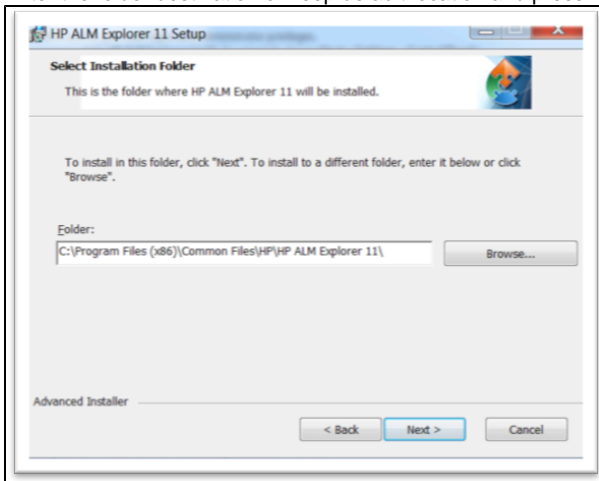
7. Click **Run**.



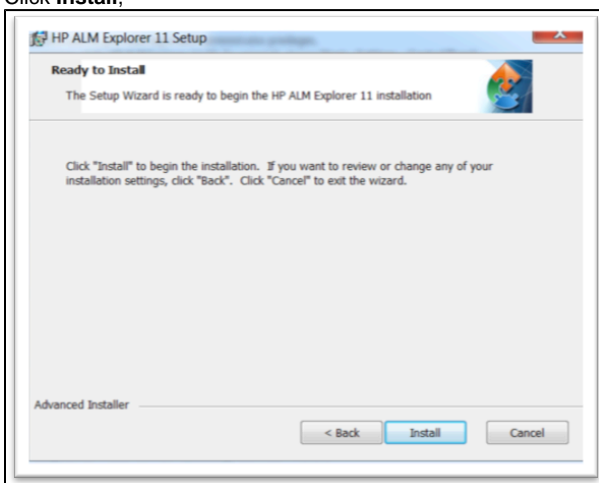
8. Click **Next** on the window that appears,



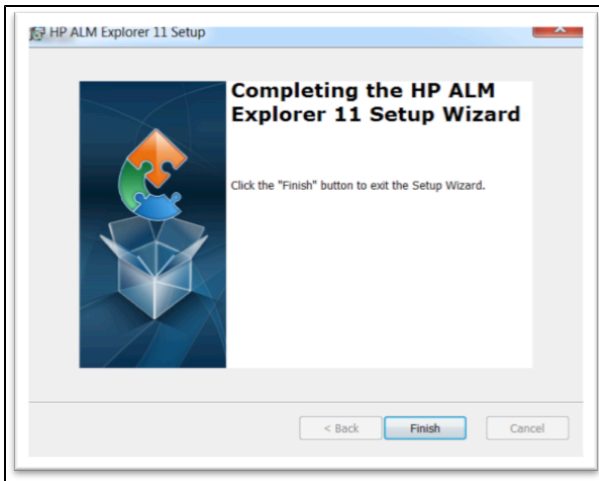
9. Enter the folder destination or keep default location and press **Next**,



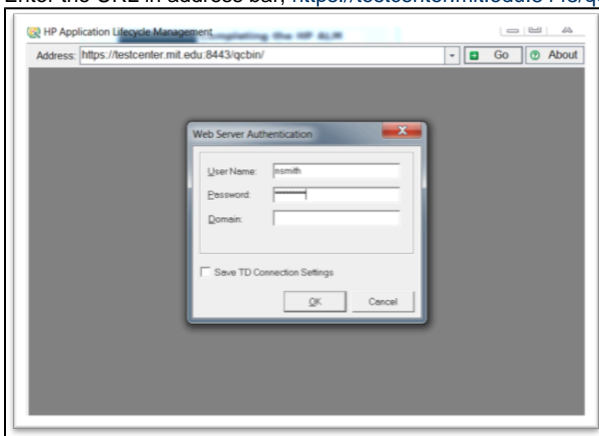
10. Click **Install**,



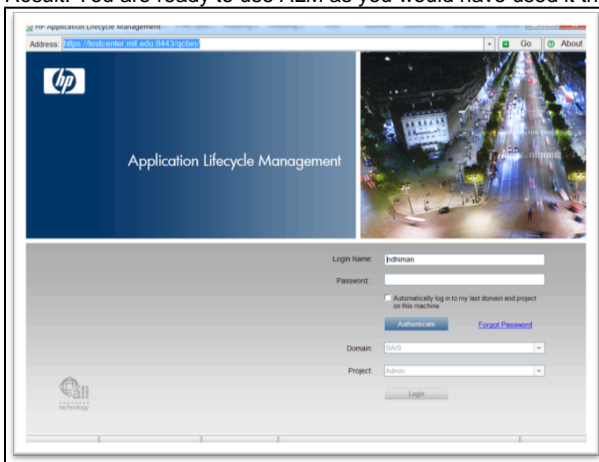
11. Click **Finish**,



12. To access ALM Explorer, you can now go to **Start > HP ALM Explorer 11 > HP-ALM-Explorer 11**,
13. Enter the URL in address bar, <https://testcenter.mit.edu:8443/qcbin/> and click on **Go**.



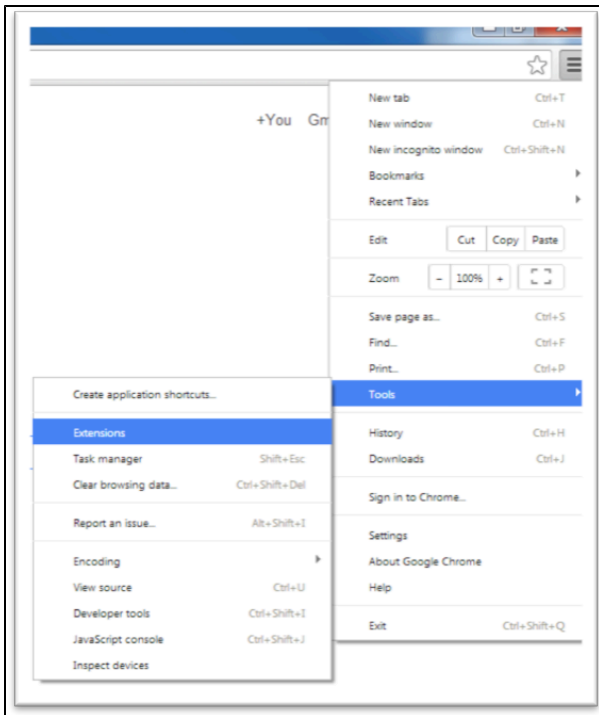
14. Enter your User name and Password, leave Domain empty, and click **OK**.
- Result:* You are ready to use ALM as you would have used it through a web browser.



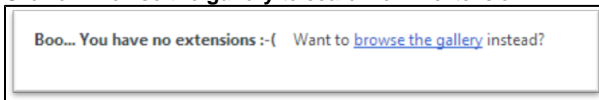
Option 2 – Chrome with IE Extension

Download IE Extension for Chrome:

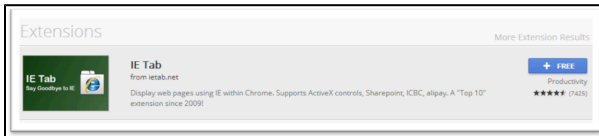
1. Open Chrome.
2. From the top right corner of the page, go to **Tools > Extensions**.



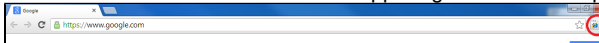
- Click on **Browse the gallery** to search for IE extension.



- Search for IE and select the **IE Tab** from the list and add it.



- You should see the icon for IE on the upper right corner of the page.



- Click on this icon to run Chrome in IE mode.