

# Open Text Viewer 10.5 Installation Instructions

## Open Text Viewer 10.5 Installation Instructions

### Preferred Alternative: Open Text Viewer Java applet

- The recommended method for viewing SAP documents is the [Open Text Viewer Java Applet].
- Open Text Viewer Java Applet requires that the Java browser plugin be installed and enabled for your browser.
  - See: [harchive:Open Text Viewer Java applet - display SAP documents]

### Overview: Open Text Viewer Desktop Client

- The Open Text Viewer 10.5 desktop client is available for Windows users for whom the [Open Text Viewer Java applet] is not a good solution.
- Detailed instructions are below. Questions? Please don't hesitate to contact the [IS&T Help Desk](#).
- For Macintosh users for whom the Open Text Viewer Java applet is not a good solution, contact the [IS&T Help Desk](#) for alternatives, such as accessing SAPgui via Citrix.

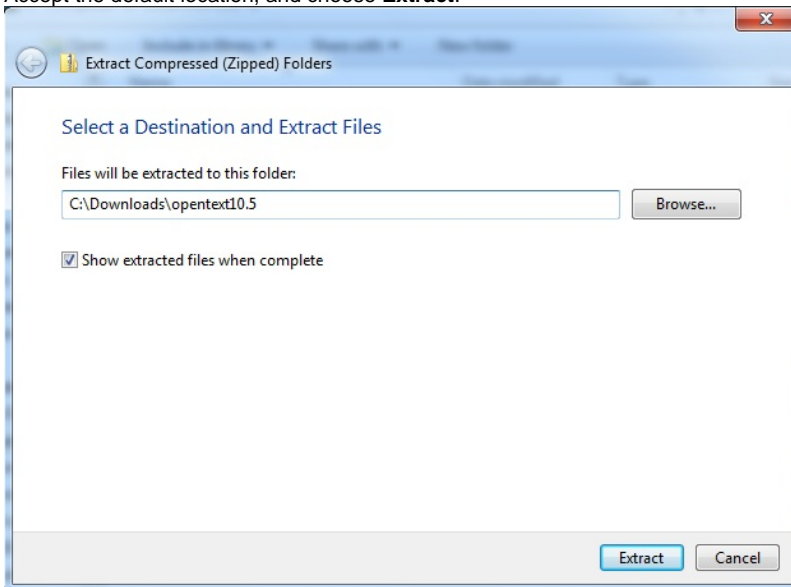
### Before You Begin

Prior to launching this installer, please complete the following preparatory steps:

1. Verify that your operating system is Windows 7 or higher.
2. Verify that Microsoft .Net Framework 4.0 or higher is installed.
  - [Download Microsoft .Net Framework 4.5](#)
3. Run [CertAid for Windows](#) to install the MIT Certificate Authority in Internet Explorer.
  - To install: Control Panel >> Programs >> Turn Windows features on or off.
4. Check that [Adobe Acrobat Reader](#) is installed.
5. Check that [SAPgui](#) is installed.
6. Logon as Administrator or logon with a user account with Administrator rights.

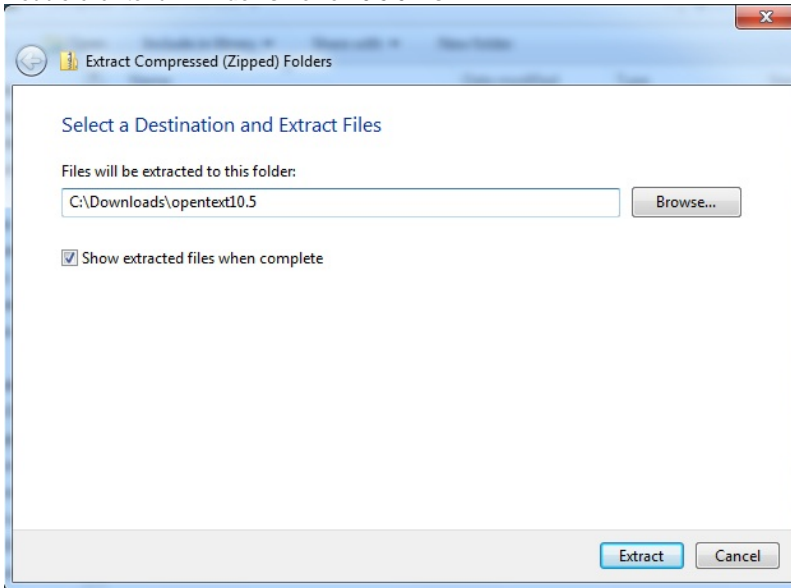
### Installation Guidelines

1. Logon as Administrator or logon with a user account with Administrator rights.
2. [Download Open Text Viewer 10.5](#)
3. Right-click the downloaded file, and choose **Extract All**.
4. Accept the default location, and choose **Extract**.

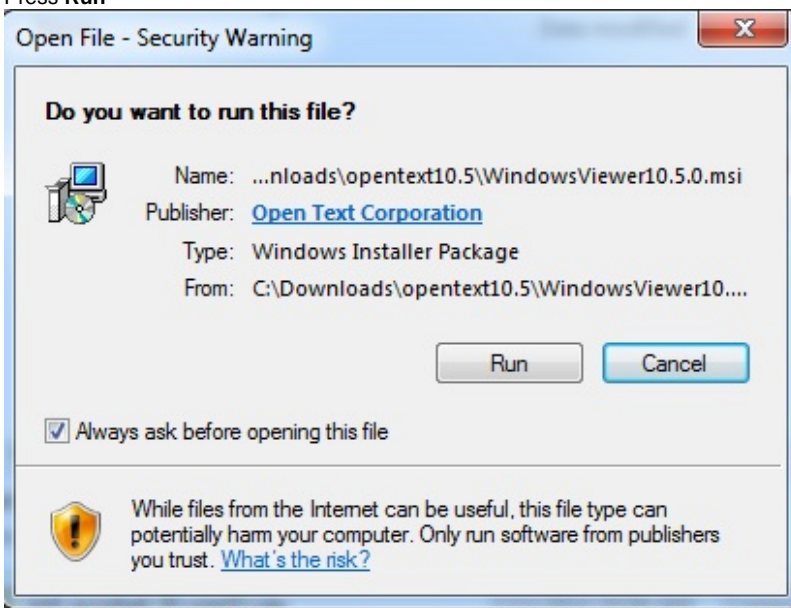


Result: opentext10.5 folder is created.

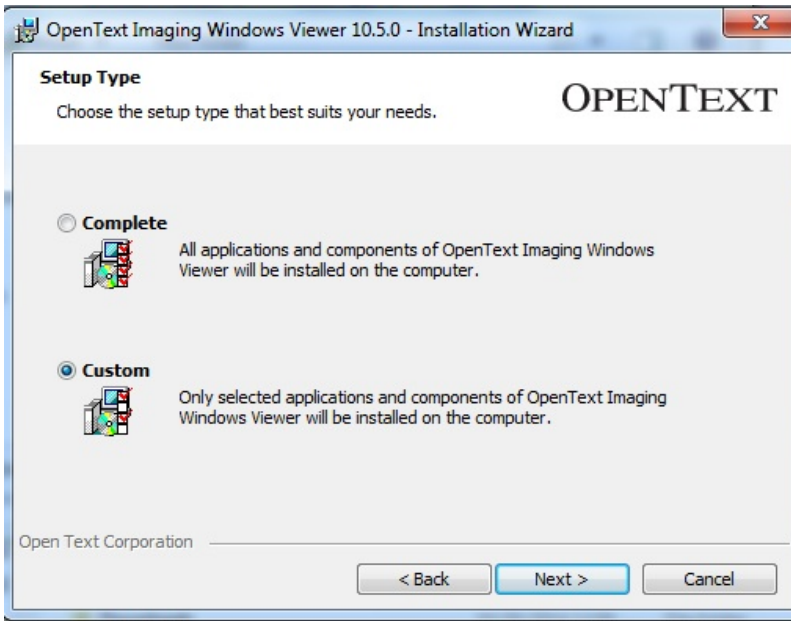
5. Double-click to run **WindowsViewer10.5.0.msi**.



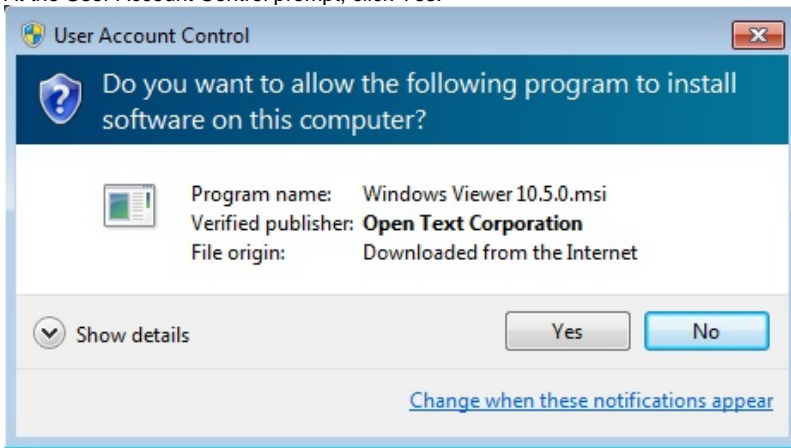
6. Press **Run**



7. Click **Next**, then **Accept** the license agreement.
8. Enter your Windows login name.
9. **IMPORTANT:** Choose **Custom** installation, to enable the installer to populate with custom MIT settings from the .ini file.



10. Click **Next** 3 times, accepting default values, then click **Install**
11. At the User Account Control prompt, click Yes.



## Installation failures and Error Log

- The installer will test that prerequisite software has been installed. See **Before You Begin**, above.
- Open Text install log is written to C:\Users\[hd:username]\AppData\Local\OpenText\Windows Viewer\Log\Setup\_OpenTextImagingWindowsViewer.log
- Questions? Contact the [IS&T Help Desk](#)