

# MECM - SCCM - Compliance Settings

## MECM - SCCM - Compliance Settings

On this page:

[Overview](#)  
[Create a Configuration Item](#)  
[Create a Configuration Baseline](#)  
[Deploy the Configuration Baseline](#)  
[See Also](#)

### Overview

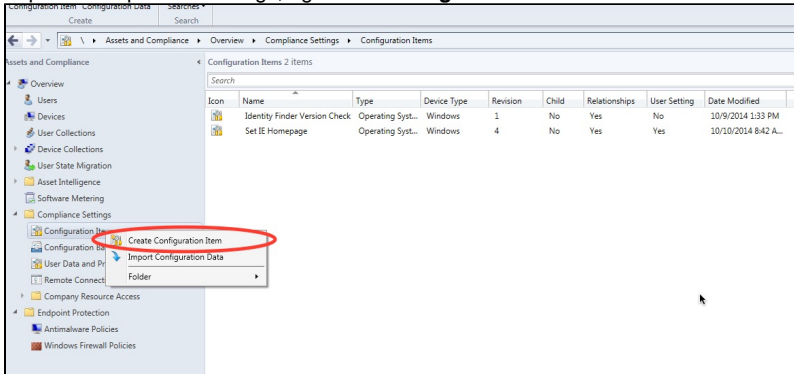
MECM Compliance Settings can be used to ensure clients meet a preconfigured baseline. For instance, if we want to make sure that all clients machines have a particular webpage set for the homepage, we can do this through compliance settings. The example will illustrate how to create a Configuration Item and Configuration Baseline.

### Create a Configuration Item

**Configuration Items** are the individuals settings that you want to set for a particular client. You can simply check for compliance and report back or remediate these settings if they are non-compliant. These configuration items can be grouped into **Configuration Baselines**.

This example will check to see if Javascript is enabled for Adobe Reader and then remediate it if found to be non-compliant.

1. Click **Assets and Compliance** from the left sidebar in the MECM Console.
2. Expand **Compliance Settings**, right click **Configuration Items** and select **Create Configuration Item**.



3. Create a name for the Configuration Item and give it a description. Click **Next**.

**Create Configuration Item Wizard**

General

Specify general information about this configuration item

Configuration items define a configuration and associated validation criteria to be assessed for compliance on client devices.

Name: Javascript for Adobe Reader 11

Description: Check registry to see if Javascript is enabled for Adobe Reader. The key is found at HKCU\Software\Adobe\Acrobat Reader\11.0\JSPrefs\EnableJS

Specify the type of configuration item that you want to create:

Windows

☐ This configuration item contains application settings

Assigned categories to improve searching and filtering:

Categories...

< Previous Next > Summary Cancel

4. Choose which operating systems you would like to assess for the configuration item.

**Create Configuration Item Wizard**

Supported Platforms

Specify the client operating systems that will assess this configuration item for compliance

☒ Select the versions of Windows that will assess this configuration item for compliance:

☐ Select all

- ☐ Windows XP
- ☒ Windows Vista
- ☒ Windows 7
- ☒ Windows 8
- ☒ Windows 8.1
- ☐ Windows 2003
- ☐ Windows 2008
- ☐ Windows Server 2012
- ☐ Windows Server 2012 R2
- ☐ Windows Embedded

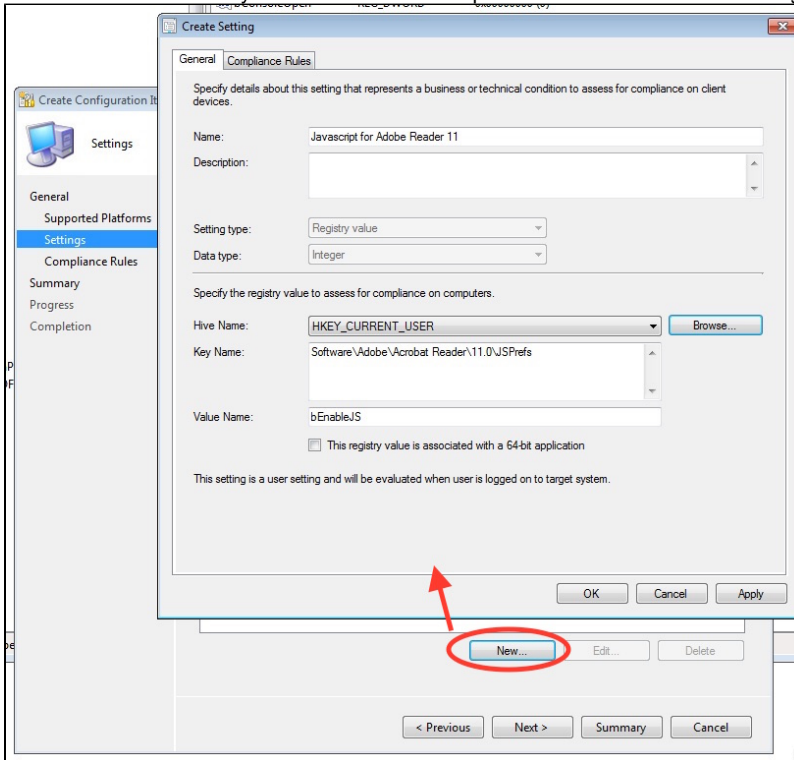
☐ Specify the version of Windows manually:

Add...

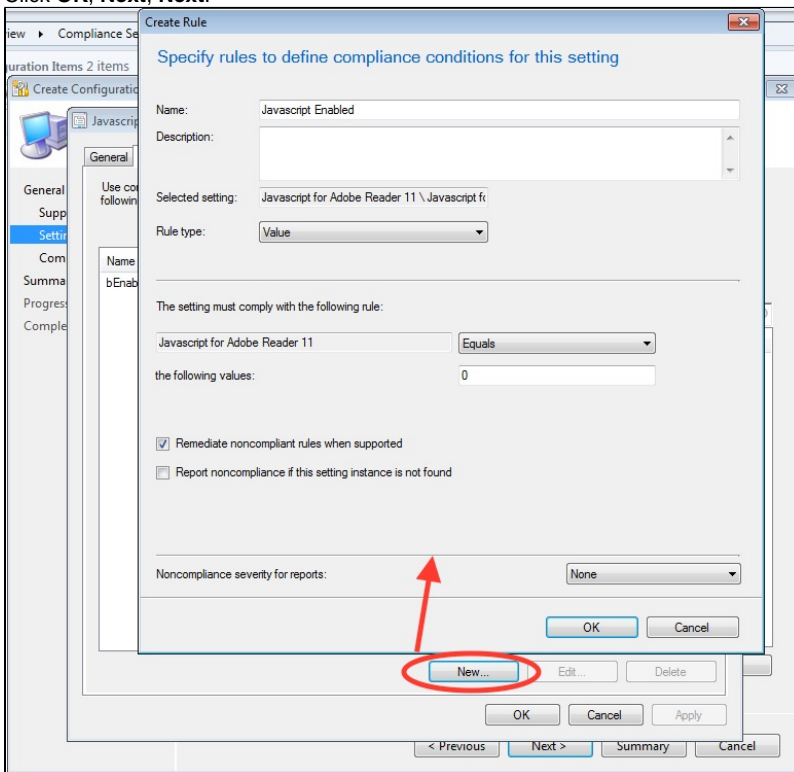
< Previous Next > Summary Cancel

5. Click new to create a new settings for this item. You can browse to the registry setting on the local computer or a remote computer (if enabled). Or you can manually specify the path to the registry setting. Click **OK**. A compliance rule that states that the registry setting

must exist is automatically created. Click the Compliance Rules tab to see the auto-generated rule.



6. Now that we are in the compliance rules section we will create a second compliance rule for this configuration item. Click **New** and you will get a window for a new setting which is based off the existing registry key. We can now specify that this key has a particular value. Choose to **remediate noncompliant rules when supported**. In this case, if the value of the reg key is 1, then it will be changed to 0. Click **OK, Next, Next**.

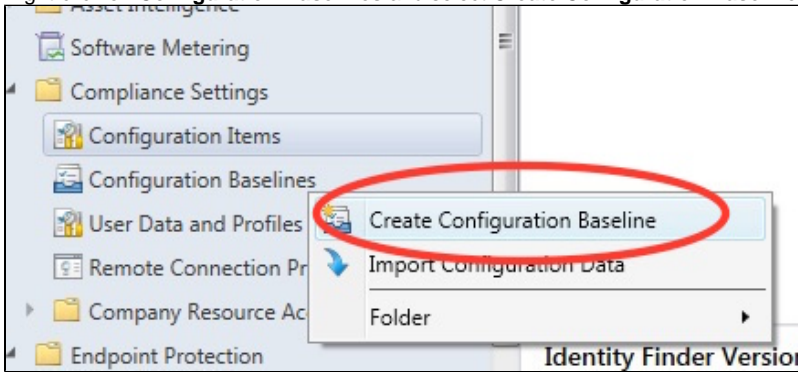


7. Click **Next** as we've already defined the compliance rules and then **Next** again at the summary page. Click **Close** at the completion page.

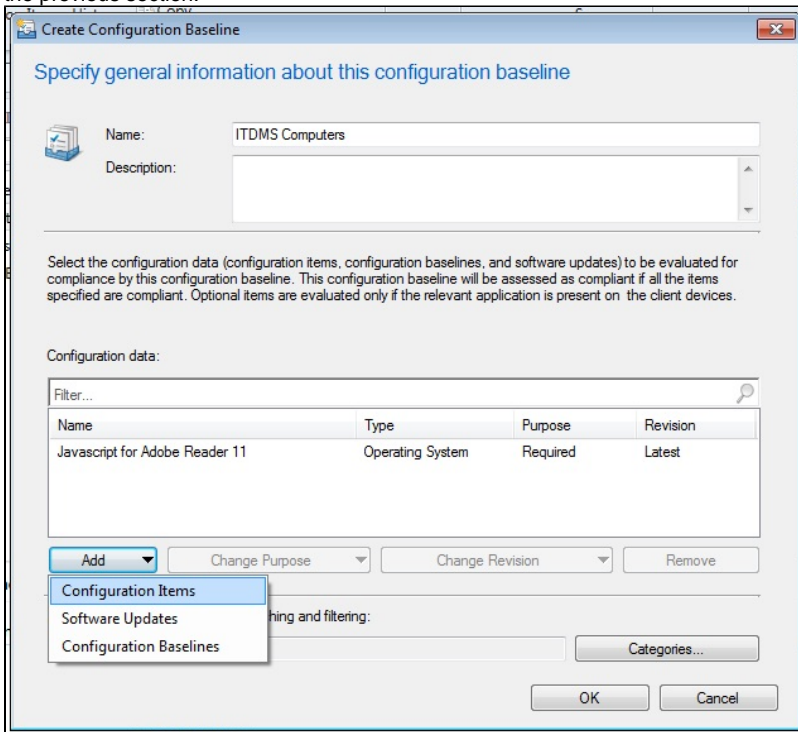
## Create a Configuration Baseline

Now that we've created a configuration item, we need to add it to a **Configuration Baseline** in order to deploy it to a client machine.

1. Right-click on **Configuration Baselines** and select **Create Configuration Baseline**.



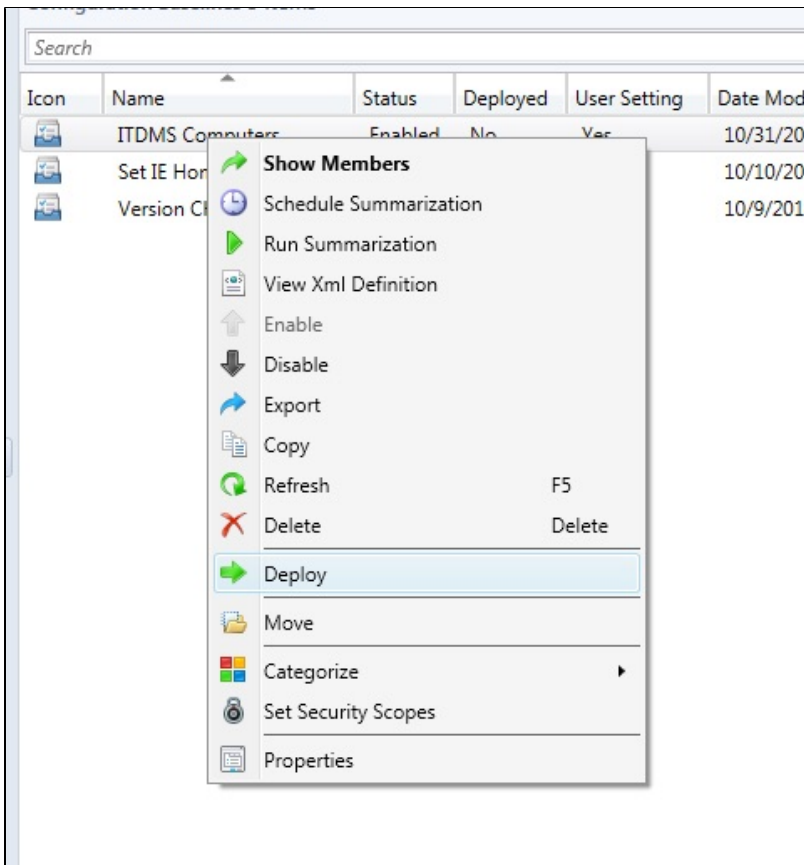
2. Give your new configuration baseline a name and click **Add > Configuration Items** to pick and choose the CIs that you would like to include in the configuration baseline. You can add multiple CIs to a configuration baseline. This example will add the Javascript item from the previous section.



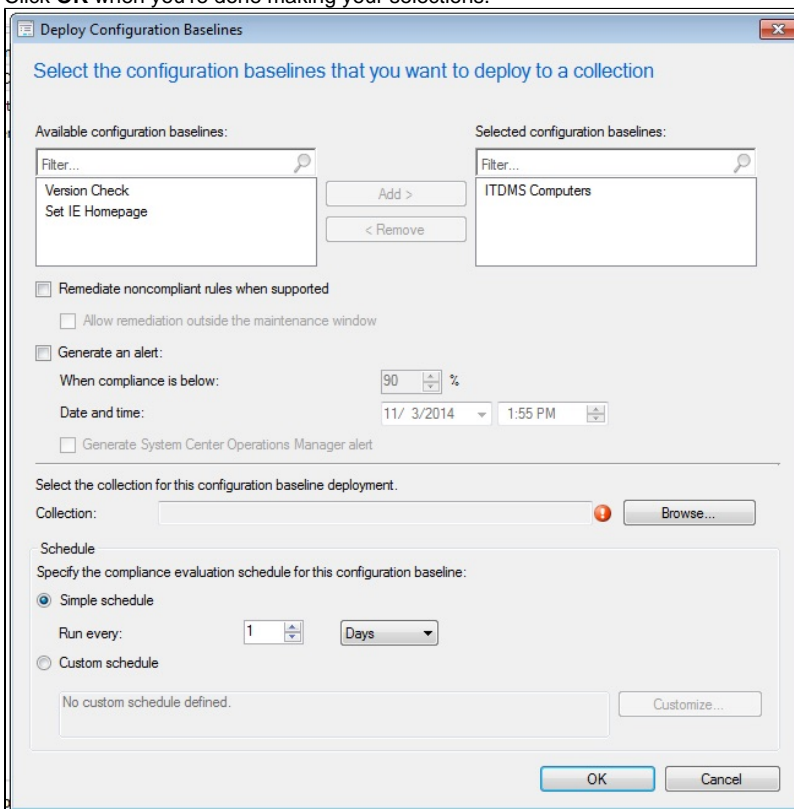
## Deploy the Configuration Baseline

The configuration baseline you've created will not be effective until you've deployed it to your target collection.

1. Right-click on the baseline and select **Deploy** from the contextual menu.



- The selected baseline will already be added and ready to be deployed. If you'd like to select additional baselines to deploy, you can do so now. You can also choose a schedule to evaluate the compliance settings.
- Click **OK** when you're done making your selections.



**See Also**

- [Microsoft Endpoint Configuration Manager \(MECM\) Landing Page](#)