

# How can I find my MAC Address of my Ethernet interface?

## Q: How can I find my MAC Address of my Ethernet interface?

### Answer

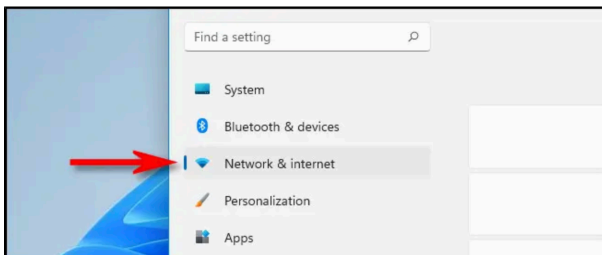
This article explains how to determine your MAC address. To get started, scroll to your operating system below:

On this page:

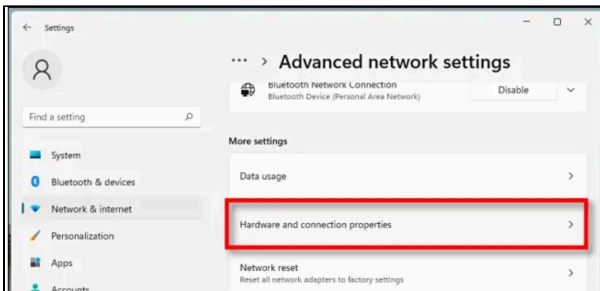
- [Windows 11](#)
- [Windows 7 and Windows 10](#)
- [Windows 7 \(alternate method\)](#)
- [Windows 10 \(alternate method\)](#)
- [Mac OS X 10.9 \(Mavericks\) to macOS 12 \(Monterey\)](#)
- [macOS 13 \(Ventura\)](#)
- [macOS 14 \(Sonoma\)](#)

### Windows 11

1.) Open Settings by pressing Windows+I key on your keyboard. When this opens, navigate to the Network and Internet



2.) In the Network & Settings, click on "Advanced Network Settings", then select "Hardware and Connections Properties"



3.) In Hardware and Connection Properties, you will see a list of information about all the network adapters installed on your PC. Locate the the adapter you want to find the MAC address for in the list (such as "Wireless Network Adapter" for your Wi-Fi Connection). You will see the MAC address Listed beside "Physical Address (MAC)".

\*\*\* > Hardware and connection properties

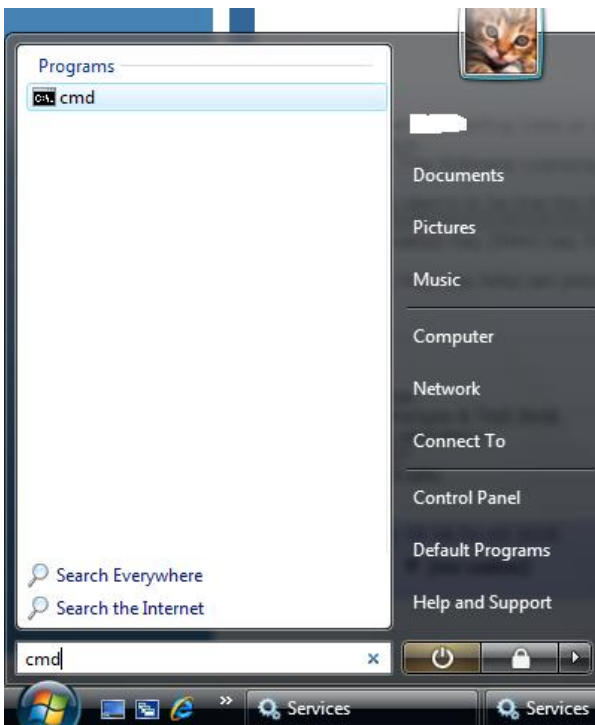
Name:	Wi-Fi
Description:	Wireless Network Adapter
Physical address (MAC):	2b:fc:f3:f3:2b
Status:	Operational
Maximum transmission unit:	1500
Link speed (Receive/Transmit):	866/866 (Mbps)
DHCP enabled:	Yes
DHCP servers:	192.168.1.1
DHCP lease obtained:	Thursday, October 14, 2021
DHCP lease expires:	Friday, October 15, 2021
IPv4 address:	192.168.1.24
IPv6 address:	
IPv4 default gateway:	192.168.1.1

**NOTE:** Each machine has its own unique MAC address.

## Windows 7 and Windows 10

Note: The screenshots below in this section are from Windows 7, however the same steps will also apply to Windows 10. There will just be cosmetic differences in the actual screens displayed.

1. Go to the **Start** menu and in the **Search** box, type **cmd**. Click the **cmd** (Command Prompt) icon in the results.



**Result:** This will bring up the Command Prompt.

2. Type in **ipconfig /all** and press **Enter**.



**Result:** This will bring your IP configuration in a verbose format.

- For your wired MAC address, look for a section labeled "Ethernet Adapter Local Network Connection."
- There may be more than one Local Area Connection. If so they will be labeled *Local Area Connection 2*, *Local Area Connection 3*, etc. Your MAC address is labeled "**Physical Address**", and is a 12 character alpha numeric string.
- For your wireless IP address, look for a section labeled "**Wireless LAN adapter Wireless Network Connection.**" Again, your MAC address is labeled "**Physical Address**", and is a 12 character alpha numeric string.

Please note that it may be necessary to scroll up if you have many network devices.

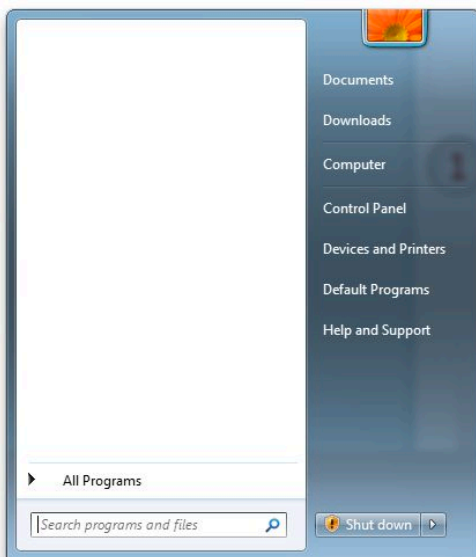
```

C:\Windows\system32\cmd.exe
Wireless LAN adapter Wireless Network Connection:
Connection-specific DNS Suffix . : mit.edu
Description . . . . . : Intel(R) Wireless WiFi Link 4965AG
Physical Address. . . . . : 00-13-E8-03-78-4F
DHCP Enabled. . . . . : Yes
Autoconfiguration Enabled . . . . : Yes
Link-local IPv6 Address . . . . . : fe80::3de1:3718:970a:5005%13(Preferred)
IPv4 Address. . . . . : 18.111.57.65(Preferred)
Subnet Mask . . . . . : 255.255.224.0
Lease Obtained. . . . . : Thursday, June 04, 2009 11:36:34 AM
Lease Expires . . . . . : Saturday, June 06, 2009 1:22:03 PM
Default Gateway . . . . . : 18.111.32.1
DHCP Server . . . . . : 18.7.50.68
DNS Servers . . . . . : 18.71.0.151
                        18.70.0.160
                        18.72.0.3
NetBIOS over Tcpip. . . . . : Enabled

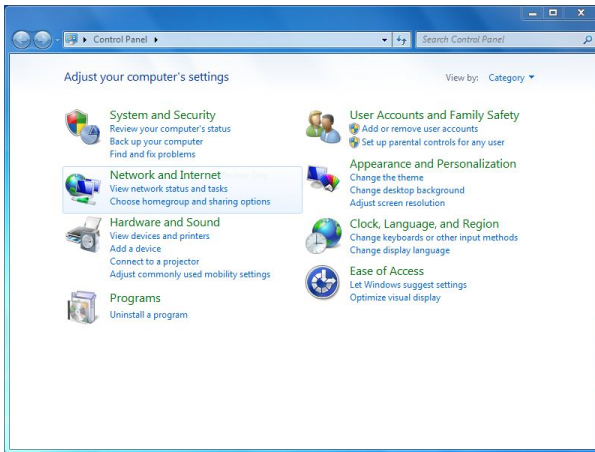
Ethernet adapter Bluetooth Network Connection:
Media State . . . . . : Media disconnected
Connection-specific DNS Suffix . : 
Description . . . . . : Bluetooth Device (Personal Area Network)
Physical Address. . . . . : 00-1C-26-FF-AF-70
  
```

## Windows 7 (alternate method)

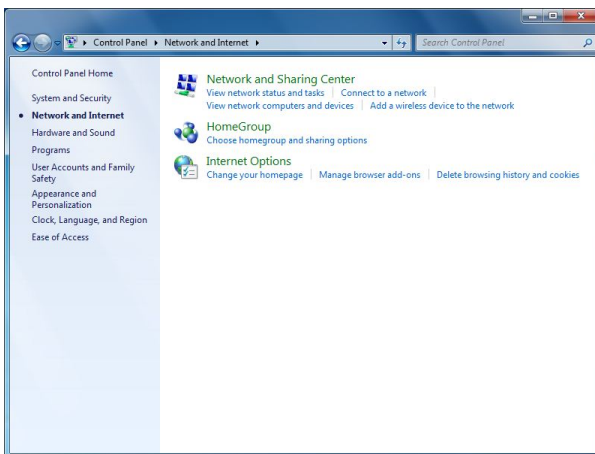
1. Open the **Start Menu** and open the **Control Panel**.



2. Click **Network and Internet**.

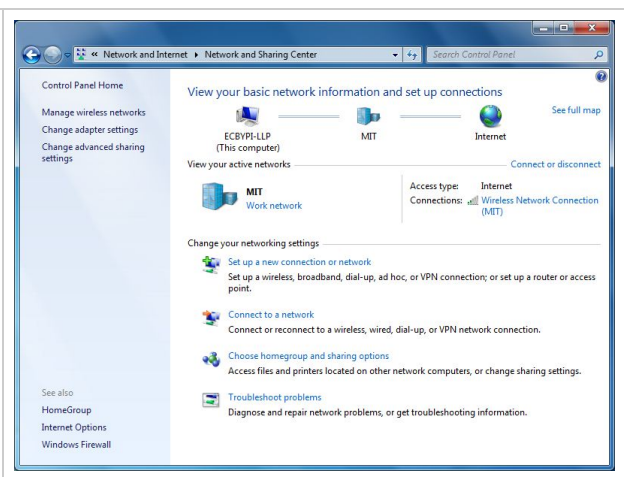
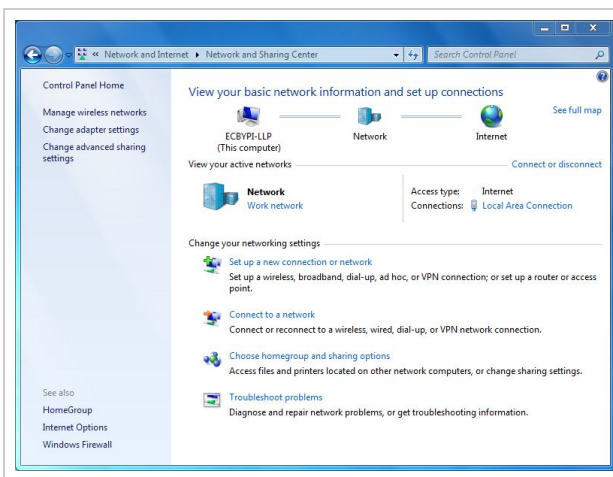


3. Click **Network and Sharing Center**.



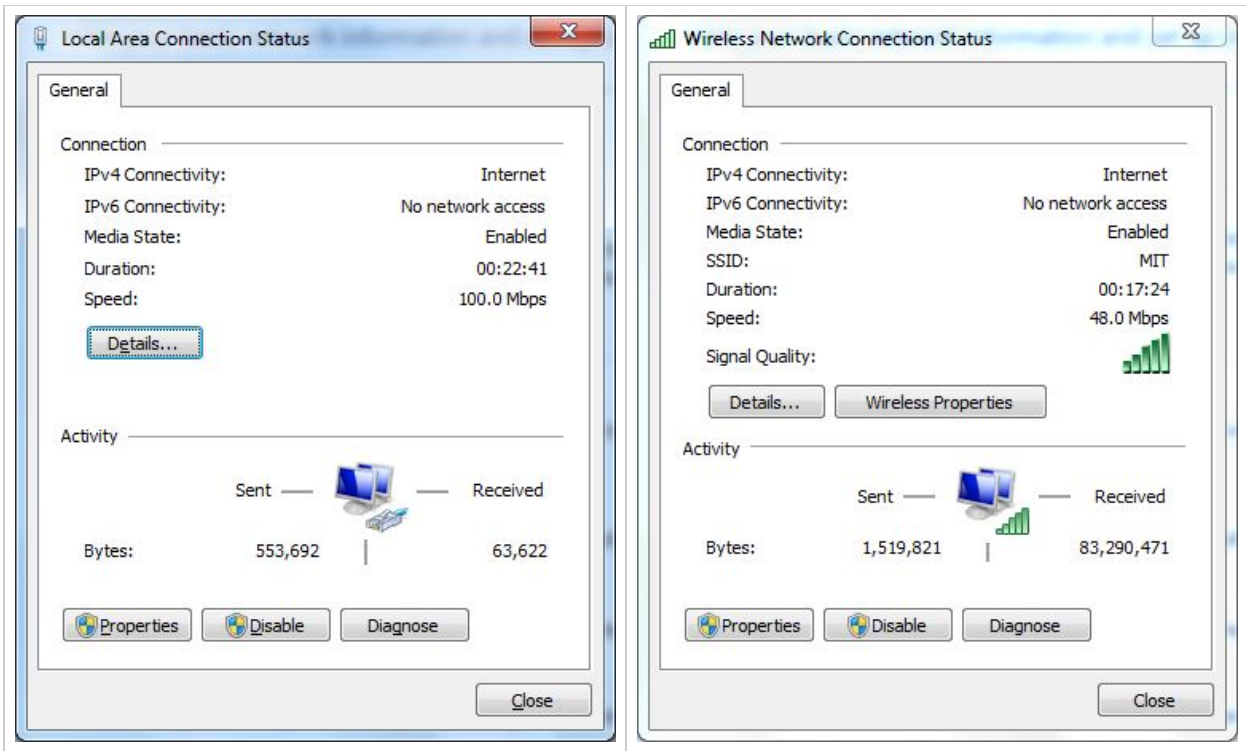
4. For the interface you are trying to obtain the MAC address for (wired or wireless), click on the link on the left-hand column under **View your active networks** next to **Connections**. In the screenshots below, it is **Local Area Connection** for *Wired* and **Wireless Network Connection (MIT)** for *Wireless*.

|| Wired || Wireless ||

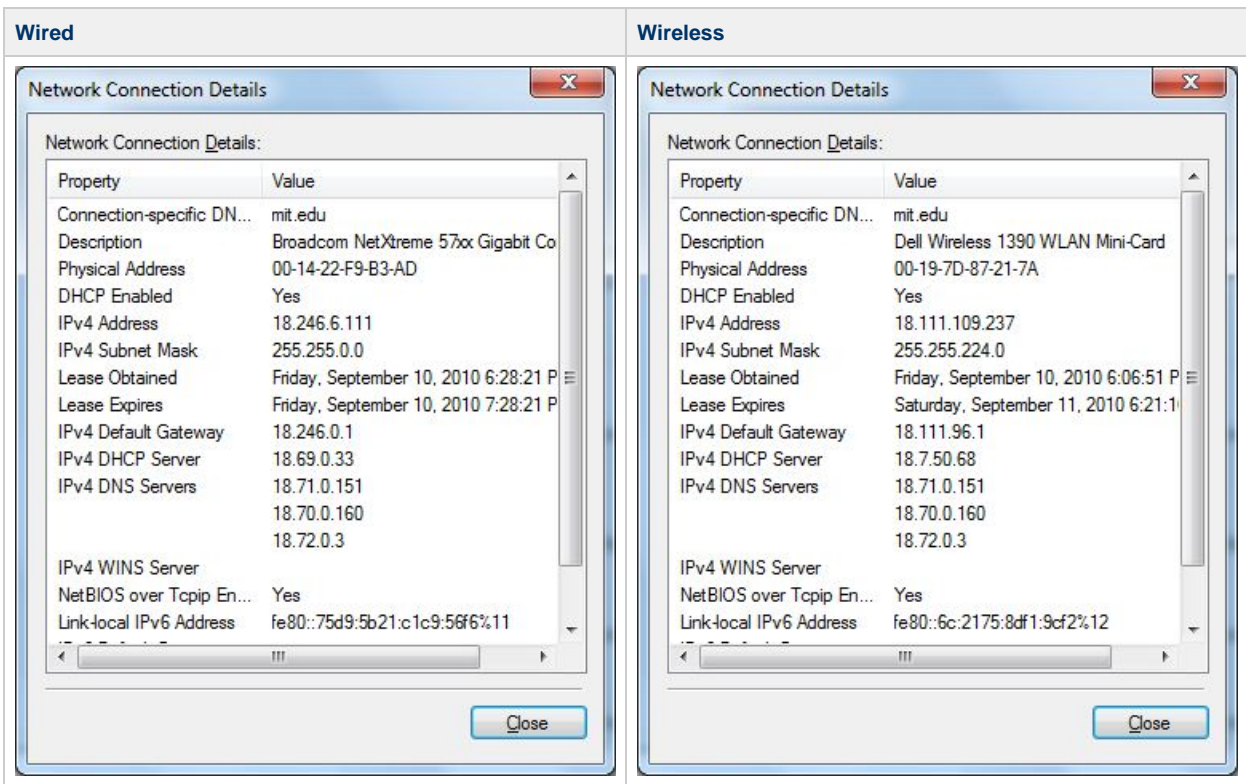


5. In the Status window that appears, click on the **Details** button.

|| Wired || Wireless ||

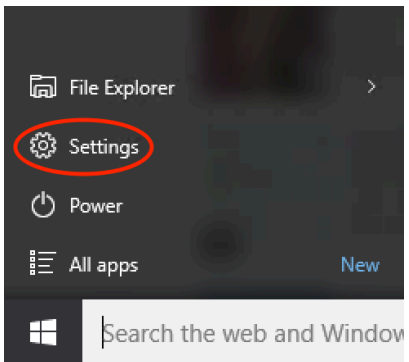


6. In the window that appears, look for the **Physical Address**. This is the MAC address your computer has on the network interface you are checking (wired or wireless)

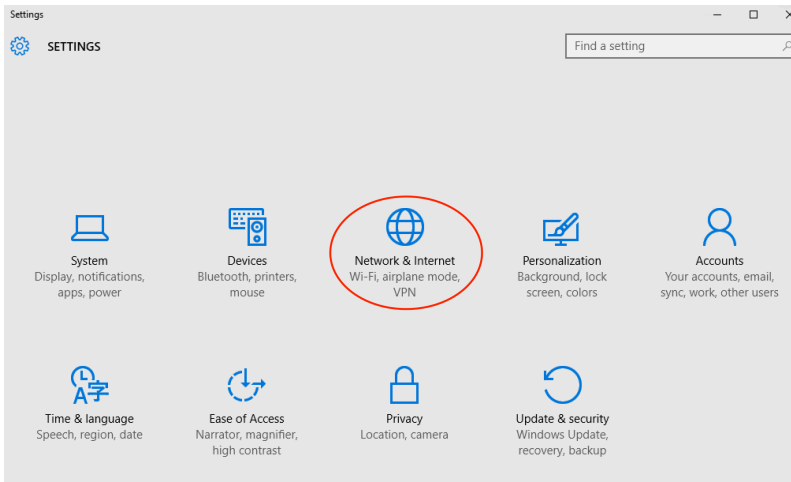


## Windows 10 (alternate method)

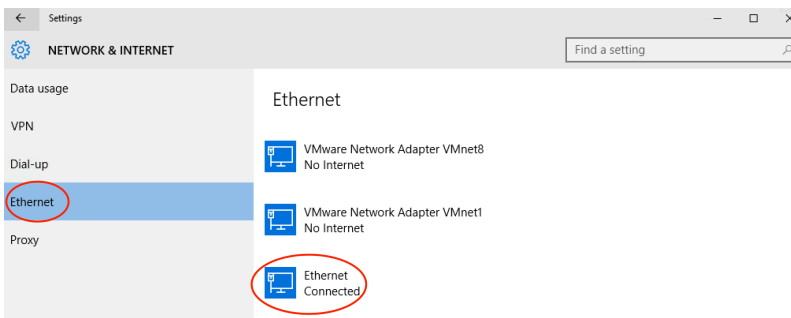
1. Go to **Start > Settings**.



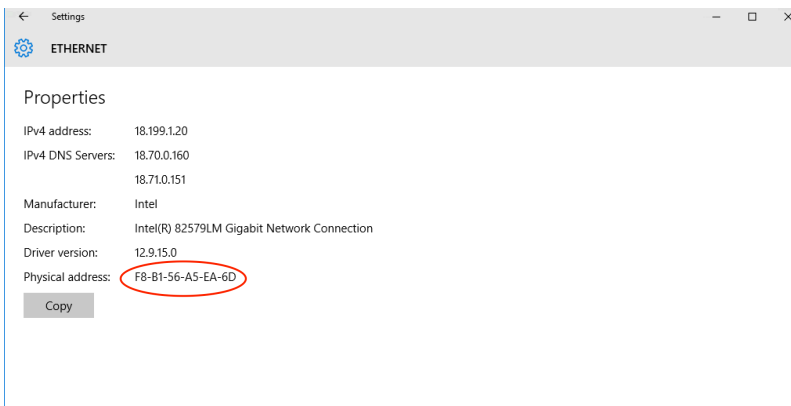
2. Once the **Settings** page opens click on **Network & Internet**.



3. Select **Ethernet** from the left hand side and select your **Ethernet interface** on the right hand side.

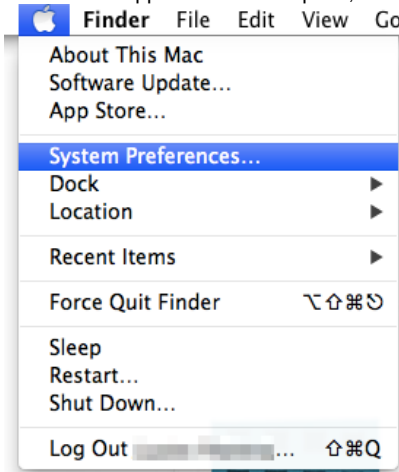


4. The Mac address will be displayed next to **Physical address** and is a 12 character alpha numeric string.

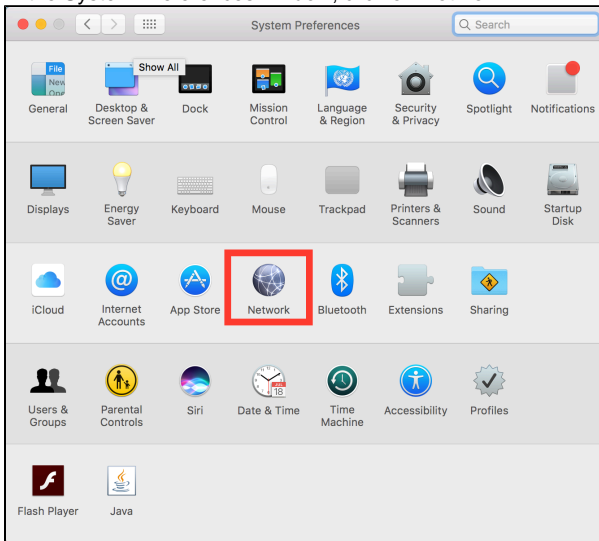


# Mac OS X 10.9 (Mavericks) to macOS 12 (Monterey)

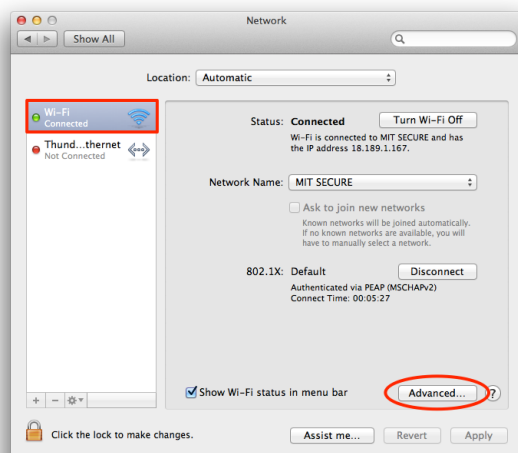
1. Click on the Apple icon in the top left, and click on **System Preferences**, or open System Preferences from your Dock.



2. In the System Preferences window, click on **Network**.

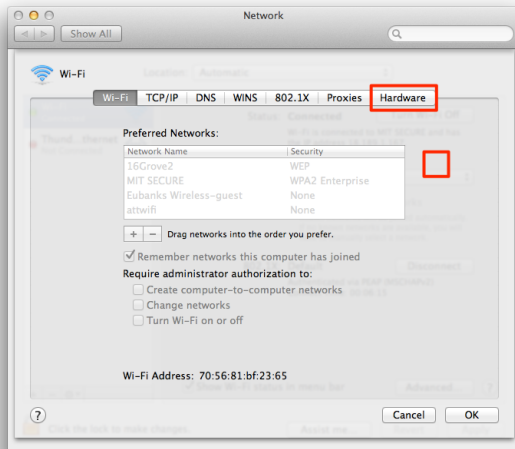


3. In the resulting network window, there will be network interfaces listed on the left. For your wired MAC address, select **Built-in Ethernet**, and then click **Advanced**. For your wireless MAC address, select **Wi-Fi** or **Airport**, and then click **Advanced**.

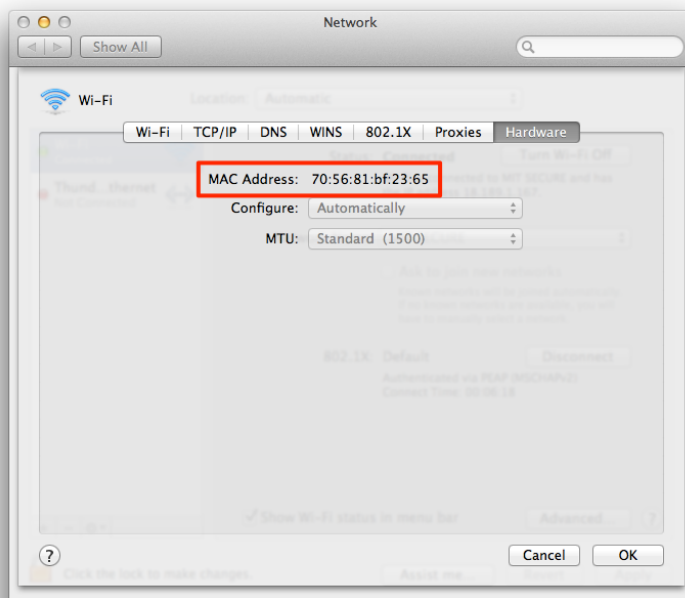


4. On the resulting screen, look on the tabs across the top for the **Ethernet** or **Hardware** tab. This screen may look slightly different

depending on whether you selected Built-in Ethernet or Wi-Fi in the previous step.



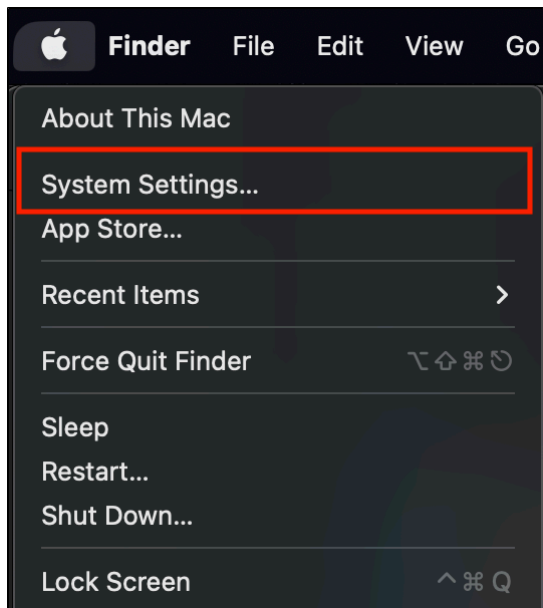
5. Your MAC address is labeled **Ethernet ID** or **MAC Address**, and should be six groups of two letters and numbers, separated by colons.



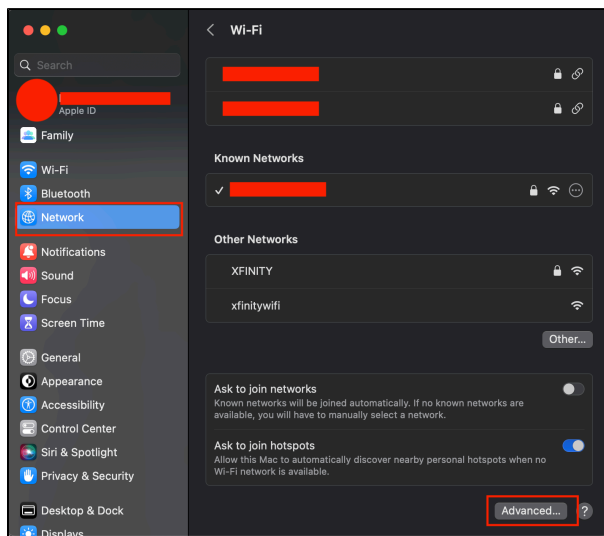
## macOS 13 (Ventura)

- 1.) From the Apple Logo in the top left corner of the display, choose from the drop down choose **System Settings**

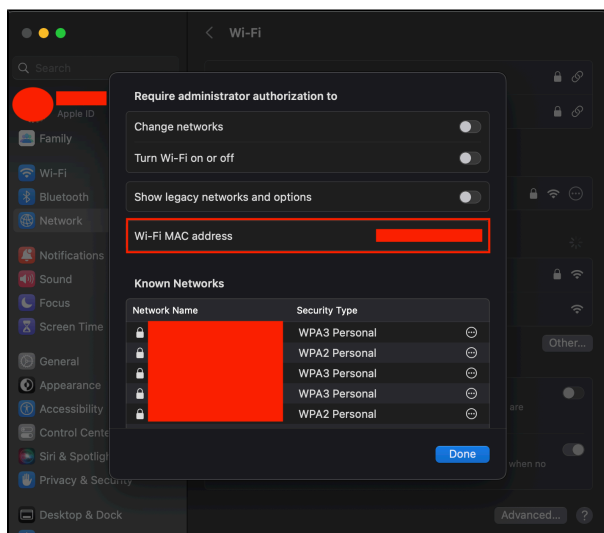




2.) From the sidebar, chose **Network**. Then scroll all the way down and click on **Advanced**.



3.) The next screen that appears will have your MAC address.



## MacOS 14 (Sonoma)

1. From the Apple Logo in the top left corner of the display, choose from the drop down choose **System Settings**
2. From the sidebar, chose **Wifi**. Then scroll all the way down and click on **Advanced**.

*Result:* You Mac address will be displayed on the next screen.