

Crashplan (Formerly Code42) for OS X and Windows 10

Crashplan (Formerly Code42) for OS X and Windows 10

i **CrashPlan and Code42 are the same application/service.** Crashplan was renamed Code42 after it was sold, then renamed again back to CrashPlan after it was sold again. Which name you see in the product, filenames, or paths depends on what version you are using. For the purposes of this documentation, the names are used interchangeably and refer to the same product.

The new vendor website for Crashplan is: <https://www.crashplan.com/>

Code42 CrashPlan is the recommended cloud backup solution for desktops and laptops at MIT. All data stored on CrashPlan is encrypted.

1. Navigate to: <http://ist.mit.edu/crashplan/>.
2. Click on **Code42**.
3. Click on the download link for your specific criteria (MIT [Certificates](#) are required)

How to Obtain

Download (MIT [certificate](#) required)

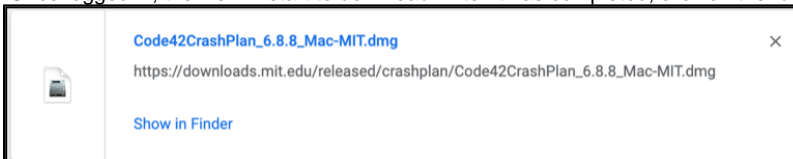
- [Mac download](#)
- [Windows 32-bit download](#)
- [Windows 64-bit download](#)
- [Linux download](#)
- [Mobile device apps](#)
- [Lincoln Lab: Available software](#) (Lincoln Lab certificate required)

Skip to

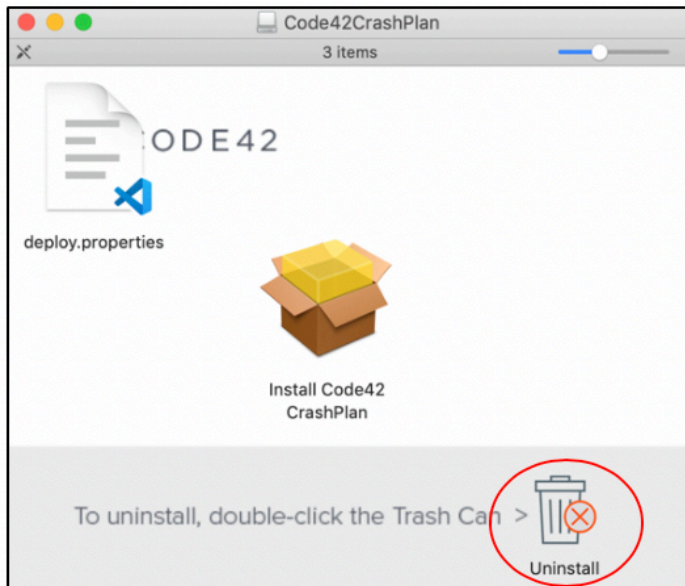
OS X:
[Windows 10](#)

OS X:

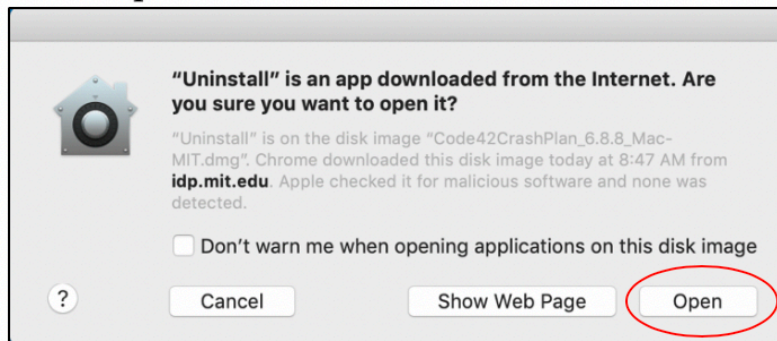
1. Once logged in, the file will start to download. After it has completed, click on the .dmg file.



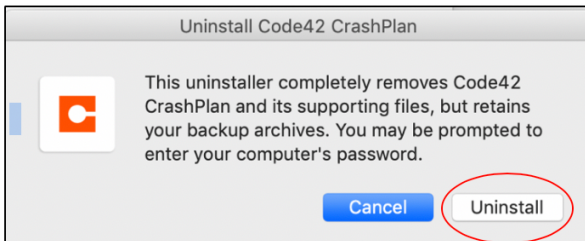
2. If you have an old version of CrashPlan already installed, it must be removed before the new version is installed. If this is a new install, skip to step 4.
3. Double click the Trash Can icon inside the installer window.



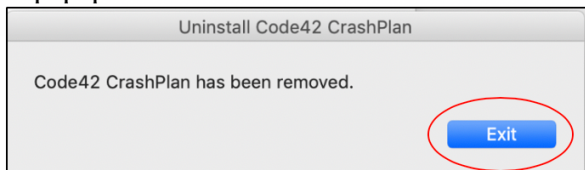
Click **Open**.



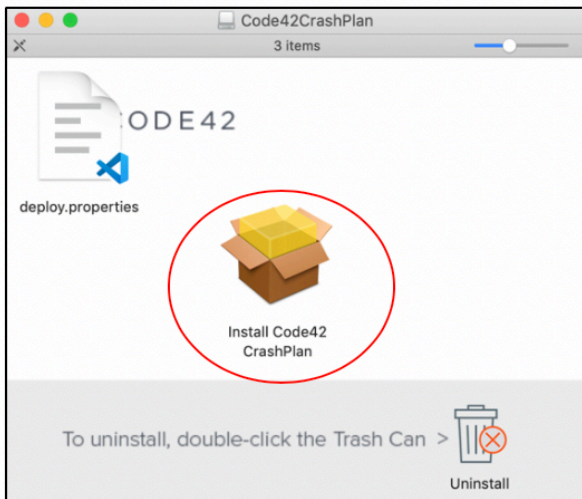
Click **Uninstall**.



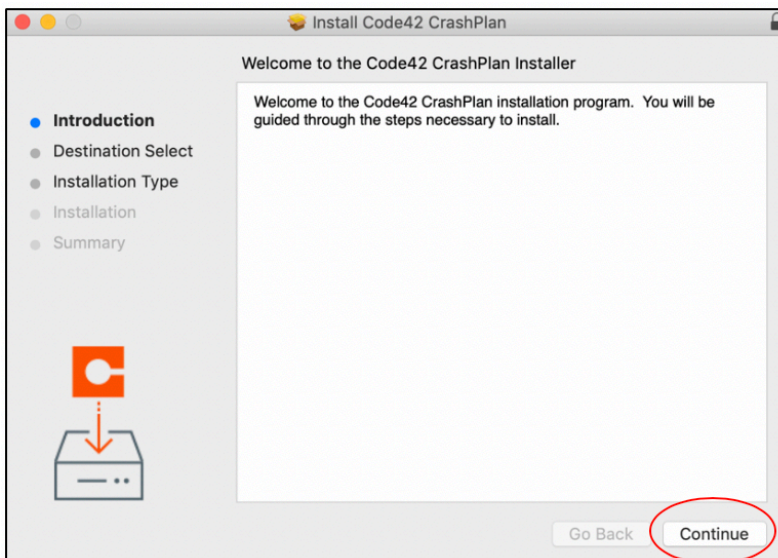
A popup will confirm CrashPlan has been removed.



4. Double click on the install icon.

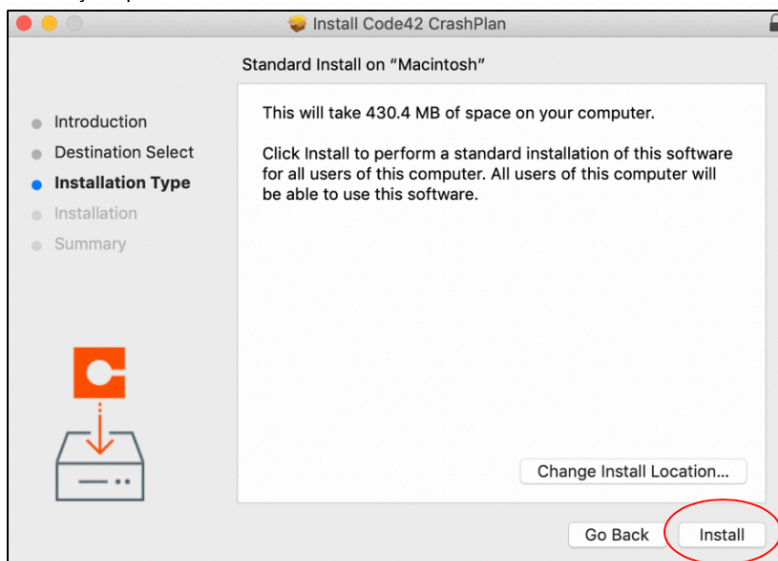


Click **Continue**.



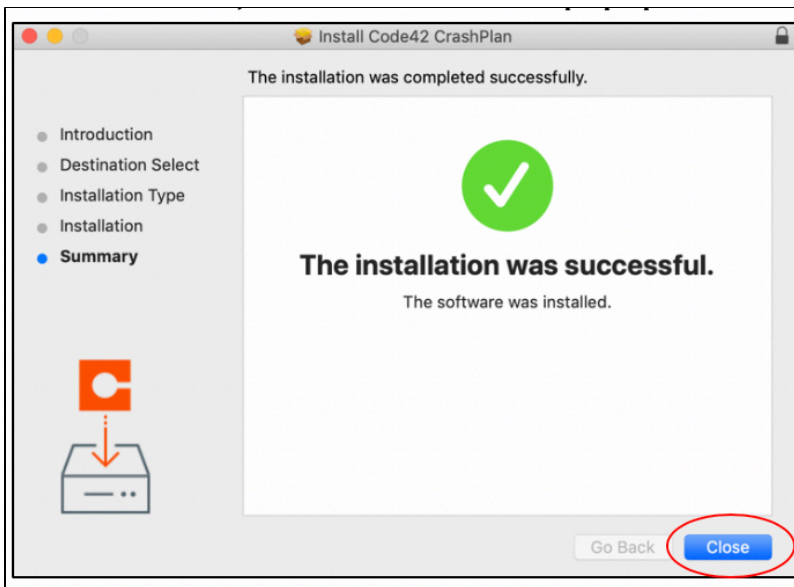
to enter your password.

Click **Install**. Your Apple computer may ask you

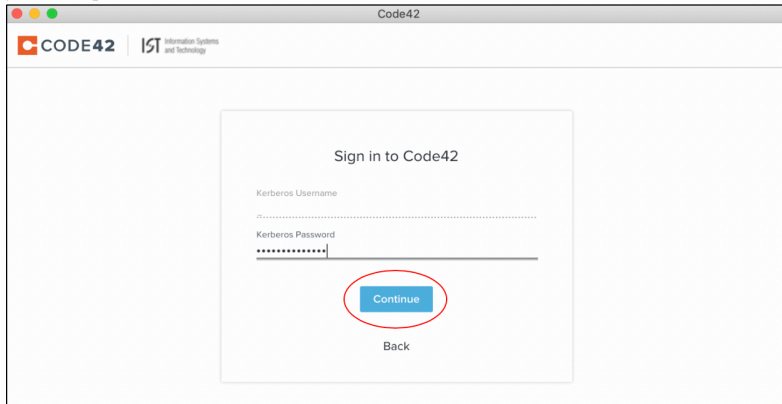


Close.

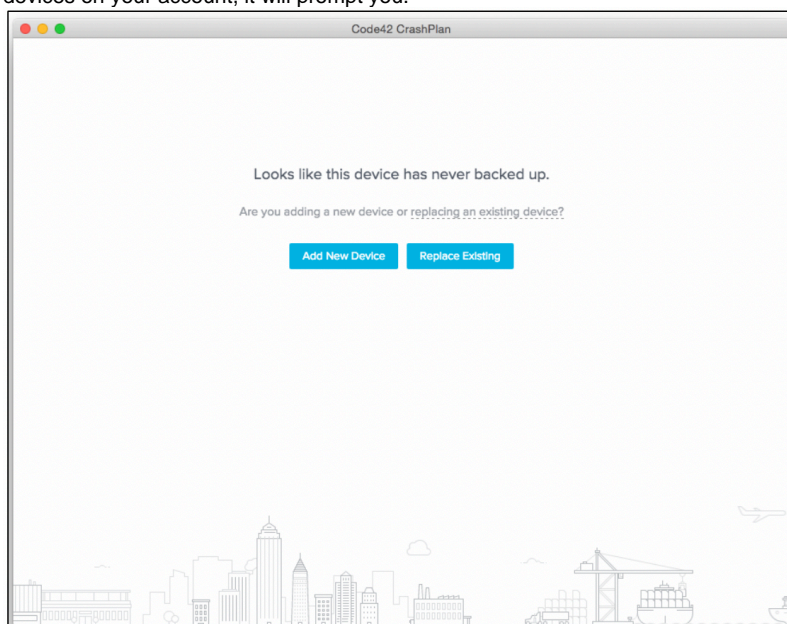
Once installed, a confirmation will popup. Click



5. A new window will open. Enter your MIT email address and your Kerberos password (if required). You may also be asked to authenticate with MIT Touchstone. Click **Continue**.



- a. The first time you sign in to Code42 on a device it detects whether there are other devices on your account. If there are other devices on your account, it will prompt you.

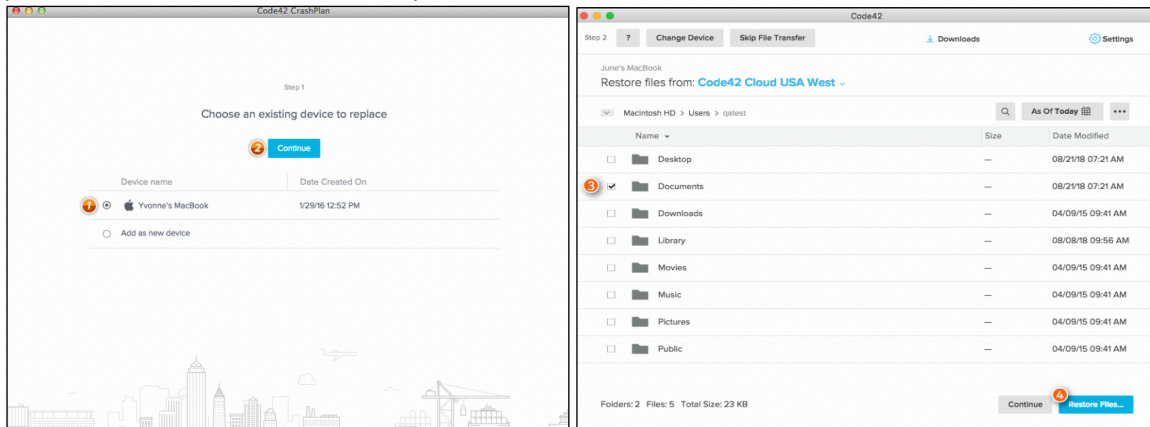


Add New Device: Starts a new backup for this device. Use this option if you plan to use both devices. CrashPlan will

automatically start indexing and backing up your Apple Computer

Replace Existing: Starts the replace device wizard, which includes choosing a device, transferring files, and updating settings. **Use this option if you are upgrading from a previous version of CrashPlan/Code42.**

- b. Choose the device you want to replace and click continue. It is recommended to restore all your files onto your device; however, you can select individual files and folders if you wish.



6. Code42 will automatically start indexing and backing up your computer. If you selected "Replace Existing", Code42 will start downloading files to your computer and then start backing up new files.

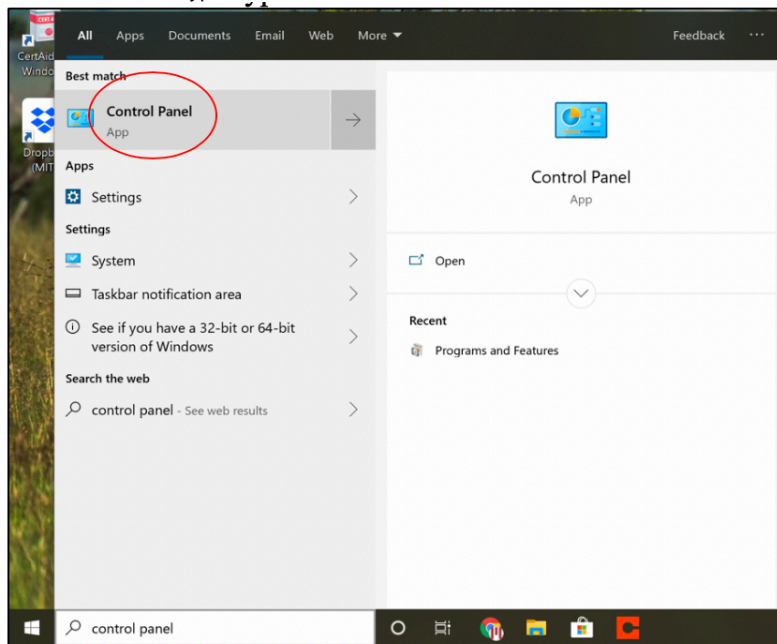


*Note Code42, by default, only backs up data inside your USERS folder. This means files placed outside this folder will only be backed up if manually selected. Applications will not be backed up.

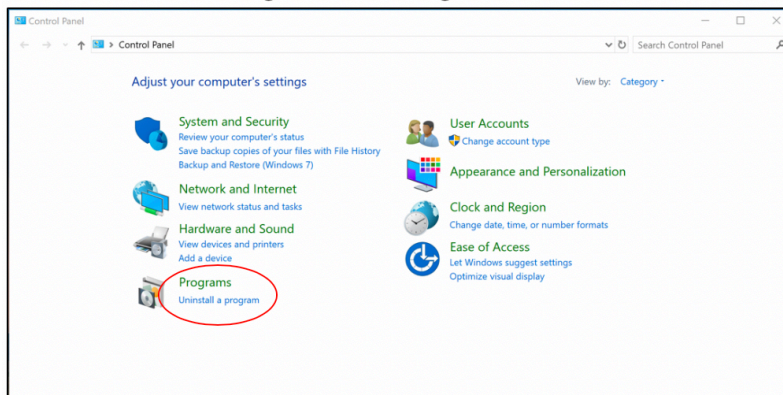
Mojave Users: Please follow [these additional steps](#) as Mojave security preferences require additional permissions.

Windows 10

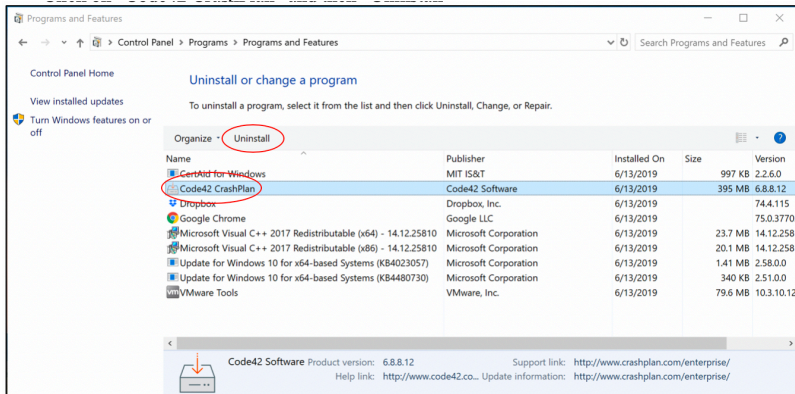
1. If you have an old version of CrashPlan already installed, it must be removed before the new version is installed. If this is a new install, skip to step 3.
In the search bar type "Control Panel" and click on the icon.



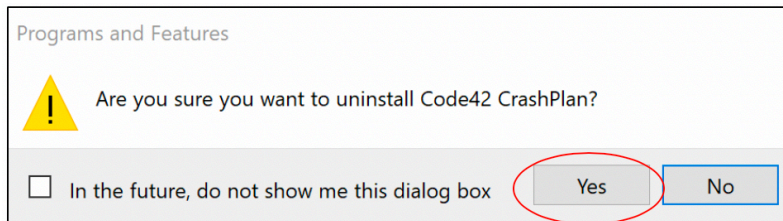
- a. Click on "Uninstall a Program" under Programs.



b. Click on “Code42 Crashplan” and then **Uninstall**.

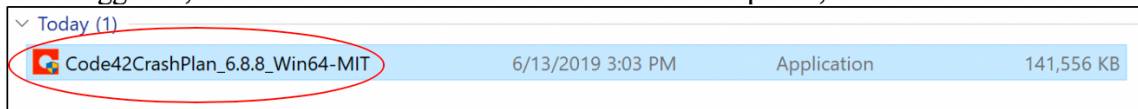


c. Click **Yes**.



d. CrashPlan will be uninstalled.

2. Once logged in, the file will start to download. After it has completed, click on the .exe file.



a. Code42 will extract the files and then open. This may take a few minutes. If this is your first time using Code42, **Sign up for an account**, and enter your **MIT email address** and **Kerberos Password** (if required) in the boxes. You may also be asked to authenticate with MIT Touchstone. Click **Sign Up**. If you have already registered, skip to step 4.

CODE42 | IST Information Systems and Technology

Sign in to Code42

Username is required.

Continue

Sign up for an account

b. Enter the information and click sign up.

CODE42 | IST Information Systems and Technology

Sign in with an existing account

Create a New Account

First Name
User

Last Name
Name

Kerberos Username
username

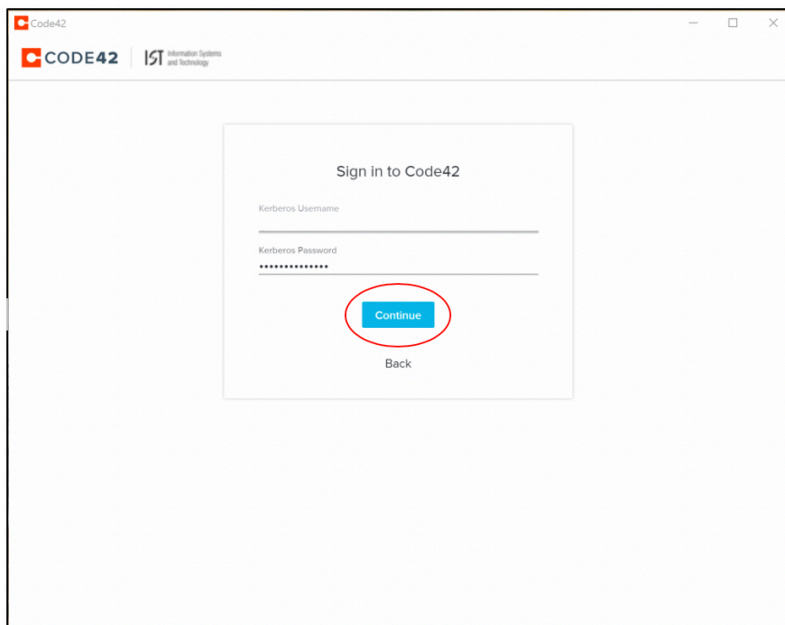
Kerberos Password

Confirm Password

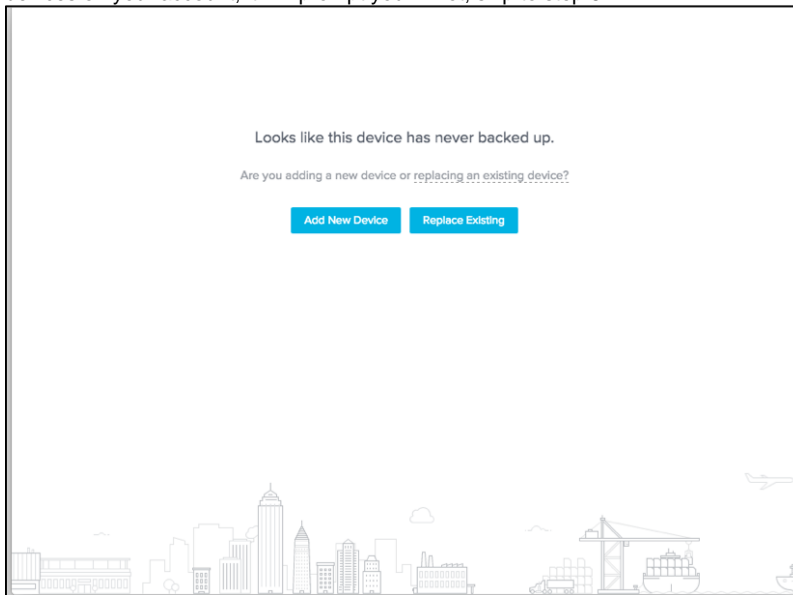
Sign Up

Back

3. Enter your MIT email address and your Kerberos password (if required). You may also be asked to authenticate with [MIT Touchstone|Touchstone Landing Page]. Click **Continue**.



- a. The first time you sign in to Code42 on a device it detects whether there are other devices on your account. If there are other devices on your account, it will prompt you. If not, skip to step 5.

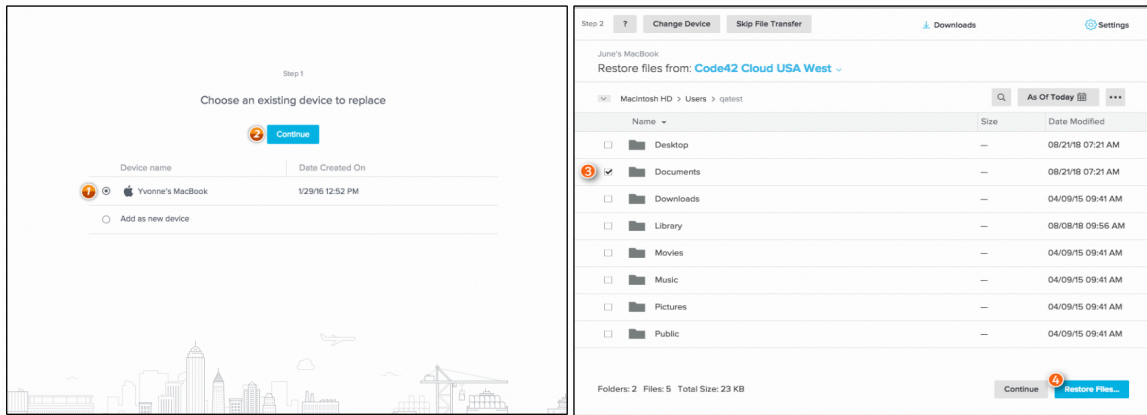


Add New Device: Starts a new backup for this device. Use this option if you plan to use both devices. Code42 will automatically start indexing and backing up your computer.

Replace Existing: Starts the replace device wizard, which includes choosing a device, transferring files, and updating settings.

Use this option if you are upgrading from a previous version of Cra/Code42shPlan.

- b. Choose the device you want to replace and click continue. It is recommended to restore all your files onto your device; however, you can select individual files and folders if you wish.



4. Code42 will automatically start indexing and backing up your computer. If you selected "Replace Existing", Code42 will start downloading files to your computer and then start backing up new files.



*Note Code42 only backs up data inside your USERS folder. This means files placed outside this folder will only be backed up if manually selected. Programs will not be backed up.