

Crashplan (Formerly Code42) 8.6.x or later for Windows - Installation

Crashplan (Formerly Code42) 8.6.x or later for Windows - Installation



CrashPlan and Code42 are the same application/service. Crashplan was renamed Code42 after it was sold, then renamed again back to CrashPlan after it was sold again. Which name you see in the product, filenames, or paths depends on what version you are using. For the purposes of this documentation, the names are used interchangeably and refer to the same product.

The new vendor website for Crashplan is: <https://www.crashplan.com/>

On this page:

[Summary](#)
[Step-by-step Instructions](#)
[More Information](#)
[See Also](#)

Summary

- Accept the default choices all through the installer.

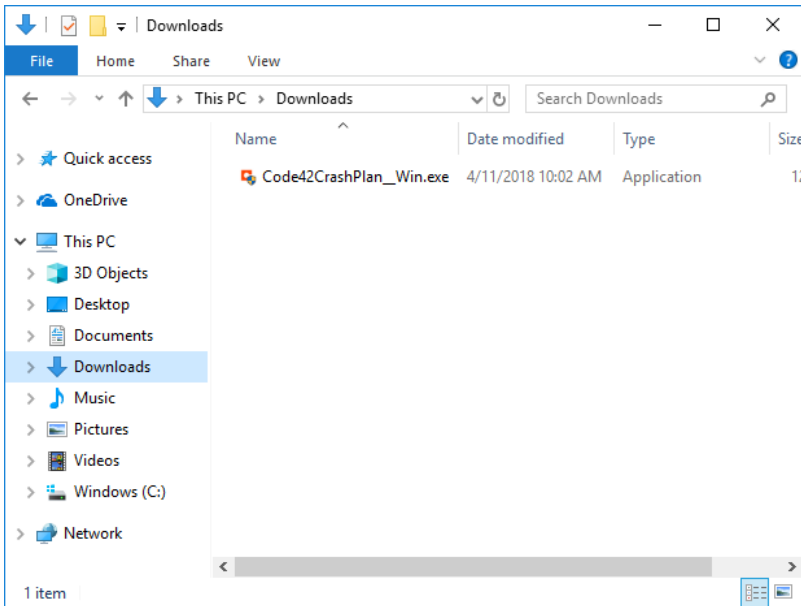
Step-by-step Instructions



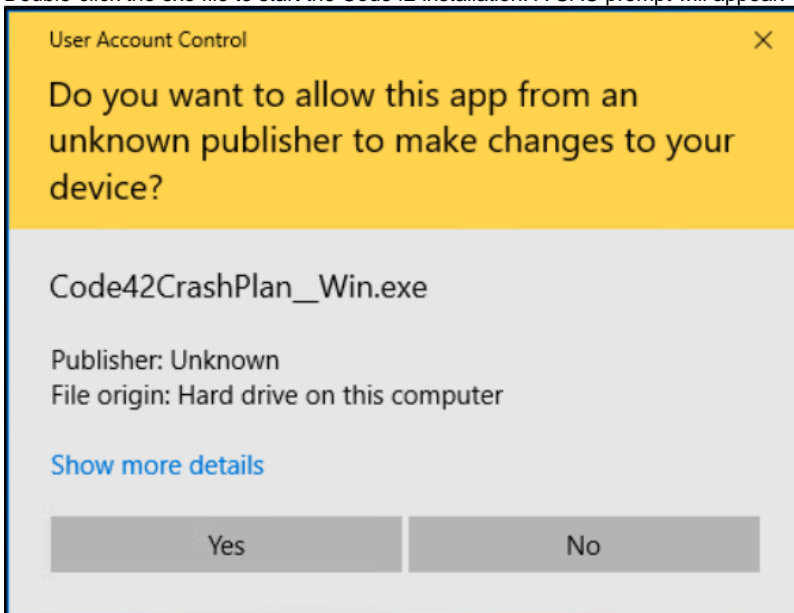
Please note that the file name you have downloaded or version numbers you see in screen shots may vary based on the version available at the time of download

1. [Get the Code42 installer](#) on the IS&T Software Grid. ([Certificates](#) required.)

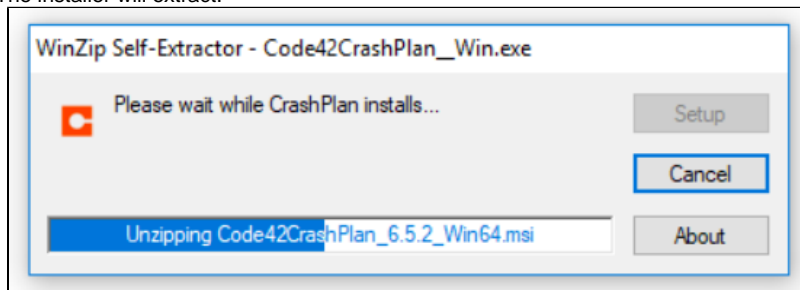
Result: The installer file called something similar to Code42CrashPlan_8.6.0_Win64_signed.exe is downloaded.



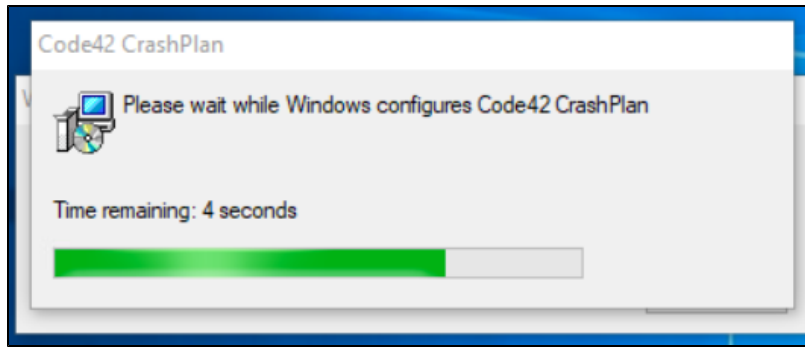
2. Double-click the exe file to start the Code42 installation. A UAC prompt will appear. Click **Yes** to continue.



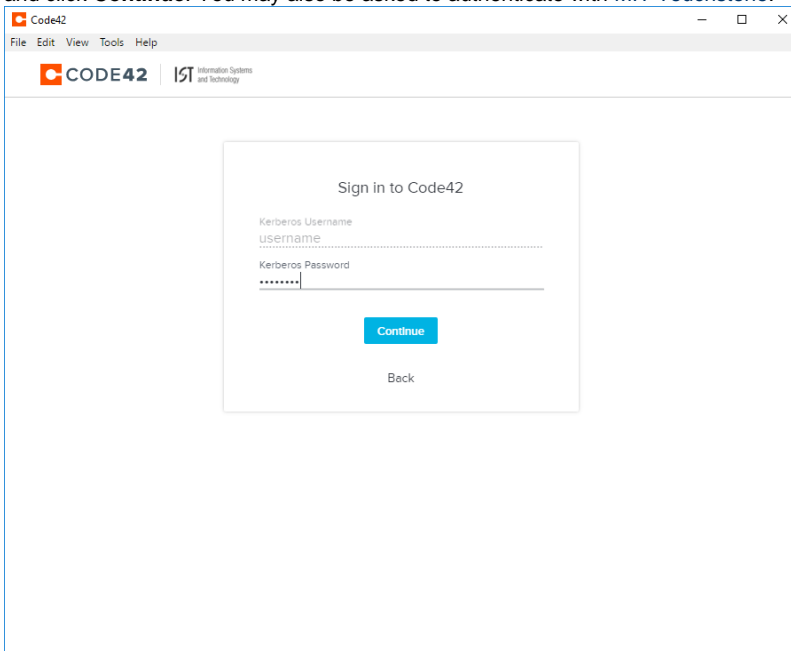
3. The installer will extract.



4. Code42 installation will proceed. This may include removing older versions as well as configuring Code 42.

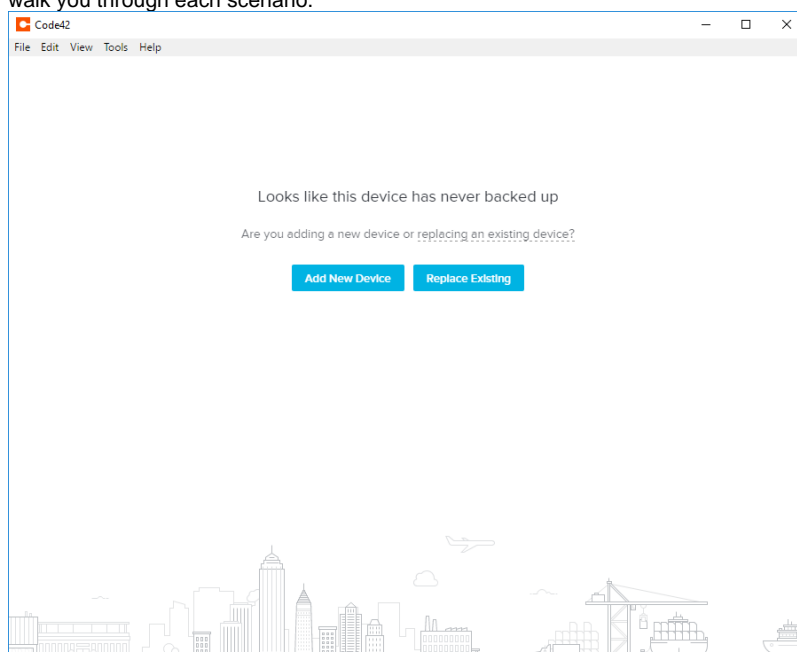


5. The Code42 Desktop program will open. Enter your **MIT email address** click **Continue** then enter your **Kerberos Password** (if required) and click **Continue**. You may also be asked to authenticate with MIT Touchstone.

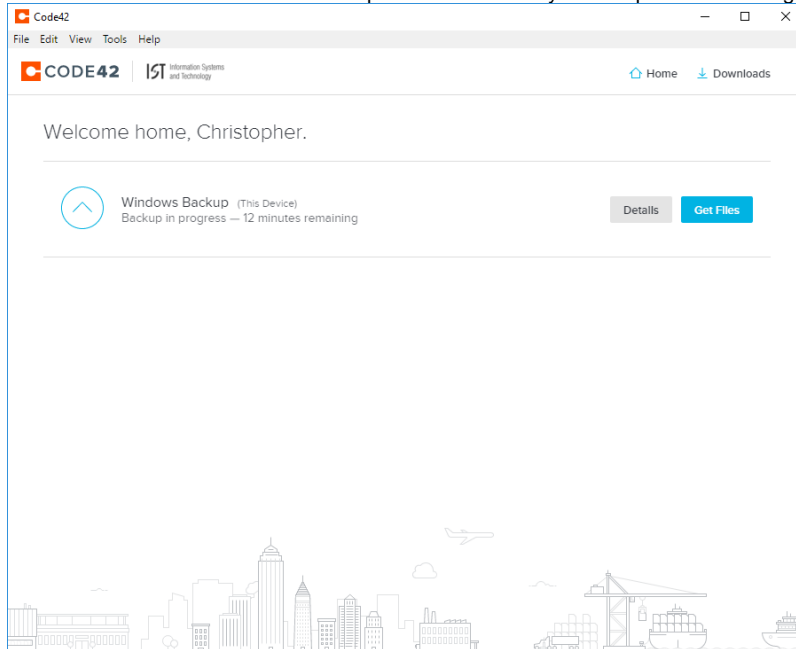





 **Note:** If you are asked for a server address or certificate, see [CrashPlan \(formerly Code42\) is asking me for a server address and registration key](#)

- a. You will have to choose whether the computer is setup as [new device](#) or to [replace any existing device](#). The Code42 wizard will walk you through each scenario.



b. You will now be at the Code42 Desktop main screen and your computer should begin to backup.



-  If you have many large files, first time backup may take a few days but subsequent backups should be quicker.
-  Code42 selects every "User" folder on your computer. It also selects some hidden folders; it is normal to see a half-dozen folders on the list, including ones that you haven't seen before.
-  Because Code42 is always working to keep your computer backed up, you may want to pause backups while you are away from campus to avoid using up your personal data limits or incurring any extra fees for overages. To pause Code42's backups, simply click the **pause** button next to the status bar per the image above. Just be sure to turn it back on later!

More Information

- For additional information about Code42, you can visit <http://support.code42.com/>
- If you have questions, [contact the IS&T Help Desk](#).

See Also

- [Code42 \(Formerly CrashPlan\) Landing Page](#)
- [Windows 10 Landing Page](#)