

Enable FileVault (whole disk encryption) on Time Machine backup drives on OS X 10.9 and up

Enable FileVault (whole disk encryption) on Time Machine backup drives on OS X 10.9 and up

Primer

- FileVault 2 in OS X 10.9 (Mavericks) is based on a [whole disk encryption \(WDE\)](#) schema
- This feature provides added security for data stored on a computer's disk
- Time Machine data is not backed up by default
- Those utilizing FileVault (WDE) on their machine(s) and Apple's Time Machine should enable FileVault on their respective backup disk(s)



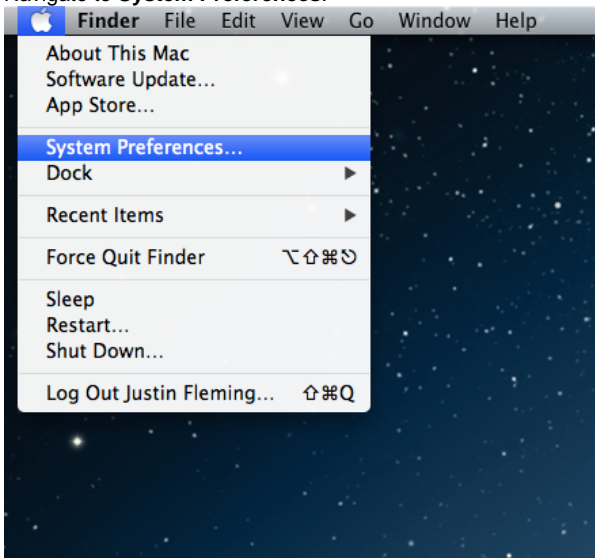
Please consult with your System Administrator before enabling FileVault on your machine.

Instructions



Before enabling FileVault 2, it is important to make sure that PGP (if used before) is completely uninstalled. If you are not sure if PGP was used on your machine before, please consult your system administrator. [Instructions on how to manually remove PGP from OS X].

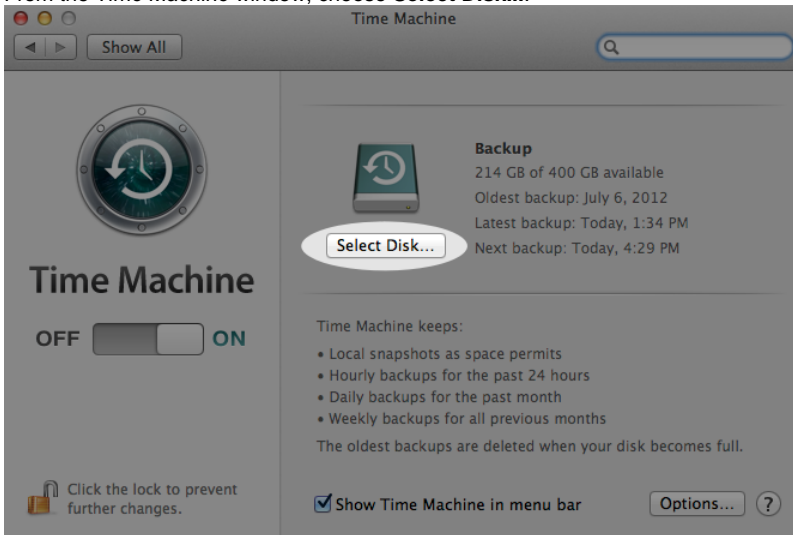
1. Navigate to **System Preferences**.



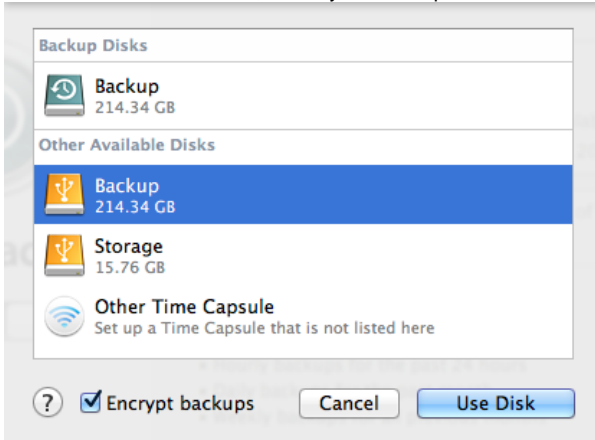
2. Select **Time Machine** from the main *System Preferences* window.



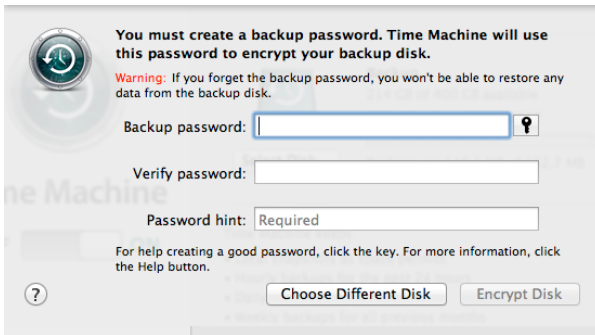
- From the *Time Machine* window, choose **Select Disk....**



- From the slide-down menu, select your backup disk and check the box labeled **Encrypt backups** and click the button **Use Disk**.



- When prompted, create a password for the backup disk and click the button labeled **Encrypt Disk**.



The image shows a macOS Time Machine window for creating a backup password. It features a title bar, a Time Machine icon, and instructional text. There are three input fields: 'Backup password' (with a key icon), 'Verify password', and 'Password hint' (with the text 'Required'). A warning message is displayed above the first field. At the bottom, there are two buttons: 'Choose Different Disk' and 'Encrypt Disk'. A help button (question mark icon) is also visible in the bottom left corner.

You must create a backup password. Time Machine will use this password to encrypt your backup disk.

Warning: If you forget the backup password, you won't be able to restore any data from the backup disk.

Backup password:

Verify password:

Password hint:

For help creating a good password, click the key. For more information, click the Help button.

[Choose Different Disk](#) [Encrypt Disk](#)

6. The Time Machine disk will begin encrypting itself.



Note: The whole disk encryption process used by FileVault takes time (~5 hours for every 250GB). If your Time Machine drive is connected to a laptop, please plan accordingly; your machine will be fully functional during the encryption process.

See Also

- [Encryption Landing Page](#)