

# SecureCRT for Windows - Quick Start Guide

## SecureCRT for Windows - Quick Start Guide

On this page:

[About This Document](#)  
[Prerequisites](#)  
[Configuring SecureCRT](#)  
[Connecting Securely](#)  
[Working with Files](#)  
[Logging Out](#)  
[Related Links](#)

### About This Document

- This document provides getting started instructions for using SecureCRT in the MIT environment.
- This document is **not** meant to be a general purpose guide to using SecureCRT's many features. SecureCRT provides detailed online help for this purpose.
- This document assumes that you have already downloaded and installed [SecureCRT](#).
- For installation instructions, see [SecureCRT and SecureFX for Windows - Installation Instructions](#).

**Note:** The sample screen images in this document include red "privacy bars"  to prevent viewing of sensitive information.

### Prerequisites

Apart from a few [system requirements](#), there are no special prerequisites for using SecureCRT at MIT. However, there are two considerations:

1. You must choose either the 32 bit version or the 64 bit version - whichever is appropriate for your machine.  
The downloads are available from the [IS&T Software Grid](#).  
If you are not sure if your machine is 32 bit or 64 bit [see this article](#).
2. You must connect to a server that supports the SSH2 protocol in order to make a secure connection.  
Most servers on MITnet support SSH2. If you are unsure whether a server supports SSH2, contact the server administrator before you connect.

Since SecureCRT uses SSH2 for secure connectivity, [Kerberos](#) is not required to use SecureCRT.

### Configuring SecureCRT

The MIT download of SecureCRT has been pre-configured with a session profile for you to connect to your Athena home directory. If you installed SecureCRT you do not need to configure SecureCRT to log on to athena.dialup.mit.edu. Other users on the machine and Windows Domain users need to run the "Create Shortcut to Athena" tool in **Start > Programs > Tools > MIT SecureCRT > Create Shortcut to Athena**. Click **Create Shortcut** to complete the configuration.

The "Options..." button allows the user to choose between the default, recommended connection method (password authentication) and Kerberos GSSAPI authentication (Kerberos tickets).

For help with configuring a session to another server, see the "Getting Started" section in SecureCRT's online help system.

### Connecting Securely

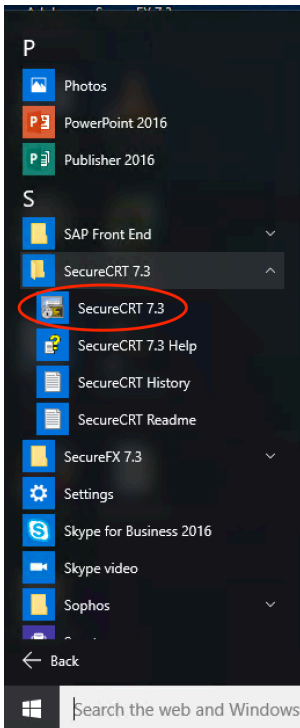
This section provides step-by-step instructions to help you establish a secure connection to **athena.dialup.mit.edu** using SecureCRT.

**Please note:** The screens displayed below are for Windows 10. These same instructions will work for Windows 7 but will just have some cosmetic differences.

To establish a secure connection to Athena using SecureCRT, do the following:

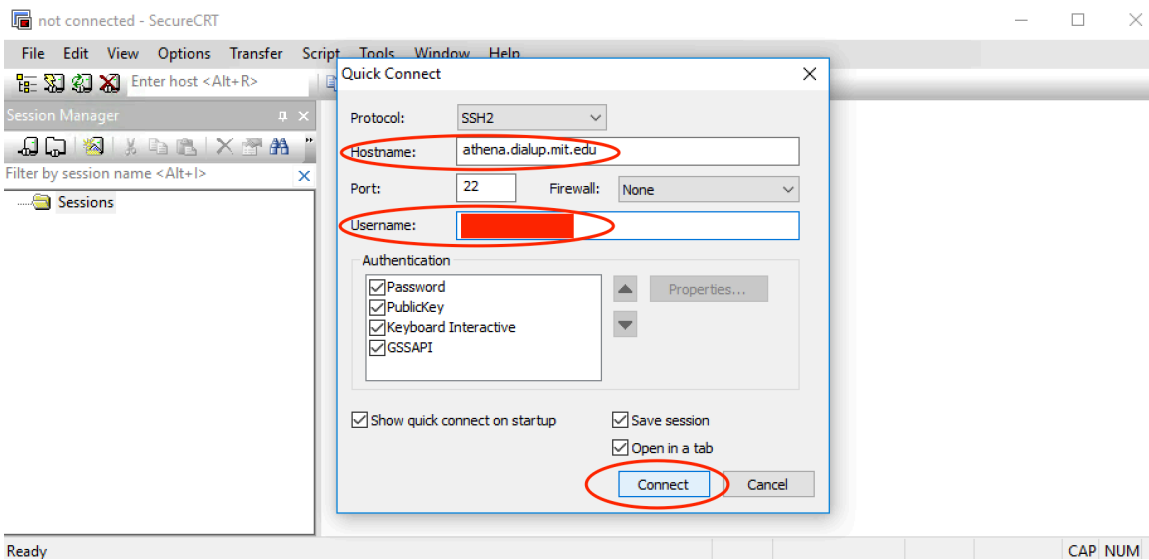
1. To start SecureCRT, click **Start > All Apps (All Programs in Windows 7) > SecureCRT > SecureCRT(version number)**. In this

example the latest version is 7.3.



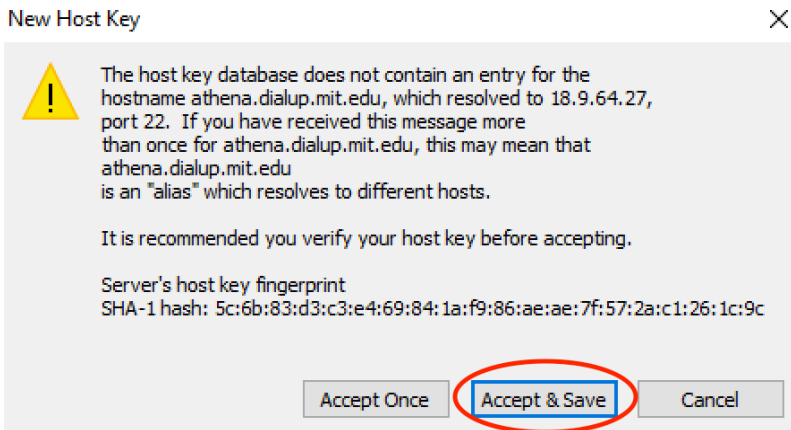
**Result:** SecureCRT opens and a **Quick Connect** window appears. Notice that there is a terminal window labeled **not connected - SecureCRT** underneath the smaller **Quick Connect** window.

2. Enter the following in **Hostname:** *athena.dialup.mit.edu*, in **Username:** *Your Kerberos Username*, then click the **Connect** button.

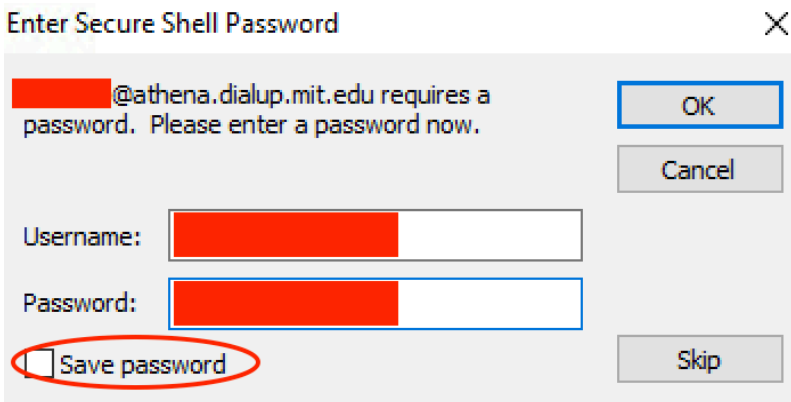


**Result:** You will be prompted with the **New Host Key** window. (athena.dialup.mit.edu is an alias, so the warning is okay).

3. Click **Accept & Save**.

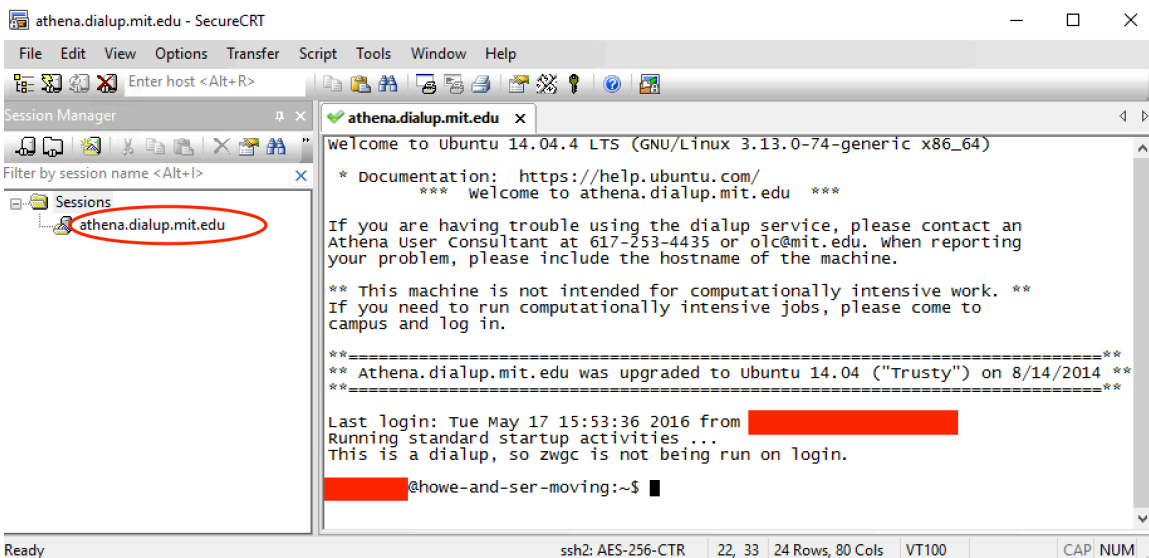


4. When Prompted enter your Kerberos Username and Kerberos Password. **Note:** IS&T recommends that you NOT select Save password.



5. Click **OK**.

**Result:** You are now logged on to Athena. Notice that SecureCRT displays the Athena command prompt in the terminal window. Under **Sessions** you will see athena.dialup.mit.edu which you can double click in the future to re-connect. You will be prompted for your password if you did not save it in Step 3.



## Working with Files

For help working with files on Athena, see [Working on Athena - Working with Files](#)

## Logging Out

When you finish an Athena session, be sure to log out. To do this:

1. Choose **File > Disconnect**.
2. When prompted with the message "Do you wish to disconnect from Athena?" click **Yes**.
3. Choose **File > Exit** to exit out of SecureCRT. You can make this choice and skip the previous steps if you wish to both log off from Athena and exit the program.

## Related Links

- [Secure CRT and FX](#)
- [Windows 10 Landing Page](#)