

How do I install the Debathena-login-graphical metapackage?

How do I install the Debathena-login-graphical metapackage?

On this page:

[Context](#)

[Answer](#)

[Learn more about using Debathena-login-graphical](#)

Context

- You want to install the Debathena-login-graphical metapackage on your personal computer.
- You have followed the pre-installation instructions and met the requirements on [How do I install Debathena on my personal computer?](#).
- This article will explain the steps involved in using the interactive command-line installer. If you wish to install the metapackage manually, see [How do I install Debathena manually?](#).

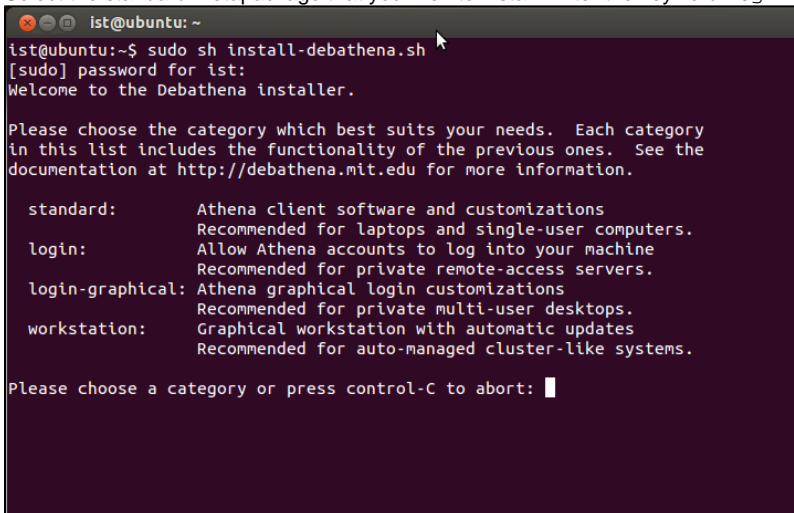
Answer

1. Open the command line.
The following steps will be executed on the command line. If you are unfamiliar with the command line, you can refer to IST's guide on [Working with the Command Line](#).
2. Make sure your Ubuntu or Debian package is up to date.

```
sudo apt-get update # Fetches the list of available updates
sudo apt-get dist-upgrade # Installs updates
```

You might be prompted for your personal computer's password. Follow the on-screen instructions to update your Ubuntu or Debian package.

3. Download and execute the Debathena installation script.
Follow the instructions on [Installing Debathena](#).
4. Select the standard metapackage that you wish to install. Enter the keyword `login-graphical` at the prompt.



```
ist@ubuntu: ~
ist@ubuntu:~$ sudo sh install-debathena.sh
[sudo] password for ist:
Welcome to the Debathena installer.

Please choose the category which best suits your needs. Each category
in this list includes the functionality of the previous ones. See the
documentation at http://debathena.mit.edu for more information.

standard:      Athena client software and customizations
                Recommended for laptops and single-user computers.
login:         Allow Athena accounts to log into your machine
                Recommended for private remote-access servers.
login-graphical: Athena graphical login customizations
                Recommended for private multi-user desktops.
workstation:   Graphical workstation with automatic updates
                Recommended for auto-managed cluster-like systems.

Please choose a category or press control-C to abort: █
```

5. Choose whether you want to install the `debathena-msmtp-mta` package. You are recommended to install the package (default option).

```
ist@ubuntu: ~  
ist@ubuntu:~$ sudo sh install-debathena.sh  
Welcome to the Debathena installer.  
  
Please choose the category which best suits your needs. Each category  
in this list includes the functionality of the previous ones. See the  
documentation at http://debathena.mit.edu for more information.  
  
standard:      Athena client software and customizations  
                Recommended for laptops and single-user computers.  
login:         Allow Athena accounts to log into your machine  
                Recommended for private remote-access servers.  
login-graphical: Athena graphical login customizations  
                Recommended for private multi-user desktops.  
workstation:   Graphical workstation with automatic updates  
                Recommended for auto-managed cluster-like systems.  
  
Please choose a category or press control-C to abort: login-graphical  
Debathena provides the 'debathena-msntp-mta' package, which includes  
a wrapper for the 'sendmail' command that configures it to use the  
MIT outgoing servers and Kerberos authentication.  
Advanced users may wish to skip this package and configure their own  
mail transport agent (e.g. Postfix) instead.  
  
Install debathena-msntp-mta? [y/N]
```

6. Choose whether you want to install extra software packages.

Note: This is a large package and provides all the third party software that is installed on Debathena cluster workstations. If you want your workstation to be exactly like a cluster workstation, you should choose to install this package. Alternatively, you can skip this package and install individual pieces of software when you need them.

To learn more about them, see [Software Licenses in Debathena](#).

```
ist@ubuntu: ~  
login-graphical: Athena graphical login customizations  
                Recommended for private multi-user desktops.  
workstation:     Graphical workstation with automatic updates  
                Recommended for auto-managed cluster-like systems.  
  
Please choose a category or press control-C to abort: login-graphical  
Debathena provides the 'debathena-msntp-mta' package, which includes  
a wrapper for the 'sendmail' command that configures it to use the  
MIT outgoing servers and Kerberos authentication.  
Advanced users may wish to skip this package and configure their own  
mail transport agent (e.g. Postfix) instead.  
  
Install debathena-msntp-mta? [y/N]y  
  
The extra-software package installs a standard set of software  
determined to be of interest to MIT users, such as LaTeX. It is pretty  
big (several gigabytes, possibly more).  
  
Note: This package may include software with additional license terms.  
By installing it, you are agreeing to the terms of these licenses.  
For more information, please see http://debathena.mit.edu/licensing  
  
Do you want the extra-software package [y/N]? 
```

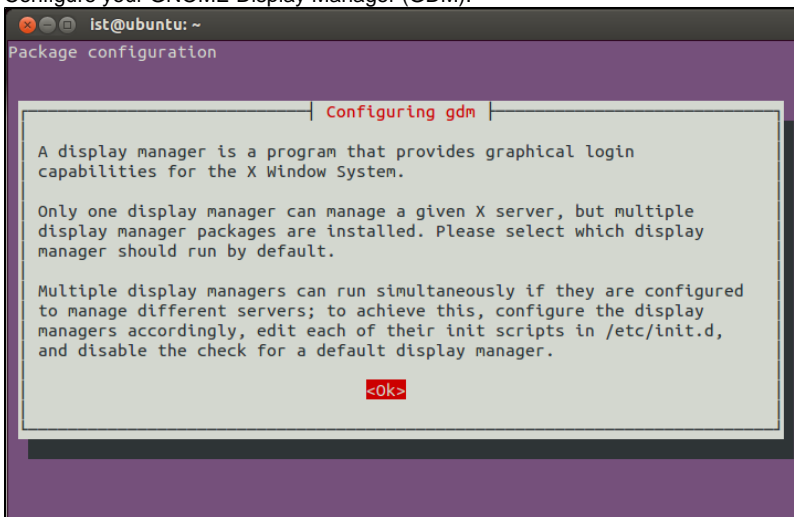
7. Review details of your installation. Press **return** to confirm and continue.

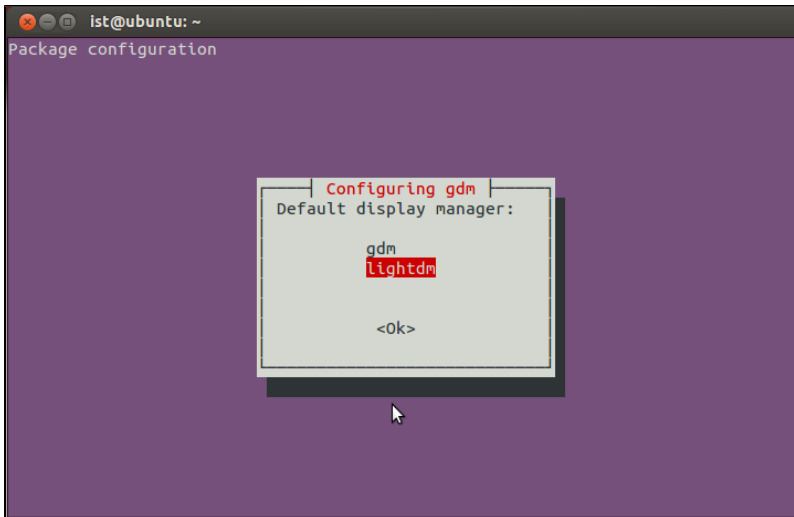
```
ist@ubuntu: ~  
a wrapper for the 'sendmail' command that configures it to use the  
MIT outgoing servers and Kerberos authentication.  
Advanced users may wish to skip this package and configure their own  
mail transport agent (e.g. Postfix) instead.  
  
Install debathena-msntp-mta? [y/N]y  
  
The extra-software package installs a standard set of software  
determined to be of interest to MIT users, such as LaTeX. It is pretty  
big (several gigabytes, possibly more).  
  
Note: This package may include software with additional license terms.  
By installing it, you are agreeing to the terms of these licenses.  
For more information, please see http://debathena.mit.edu/licensing  
  
Do you want the extra-software package [y/N]?  
  
A summary of your choices:  
Category: login-graphical  
Extra-software package: no  
Third-party software package: no  
  
Press return to begin or control-C to abort
```

8. Choose whether you want to install OpenAFS from a PPA (personal package archive) maintained by the OpenAFS team. Press **return** or enter **y** to install OpenAFS from a PPA (recommended).

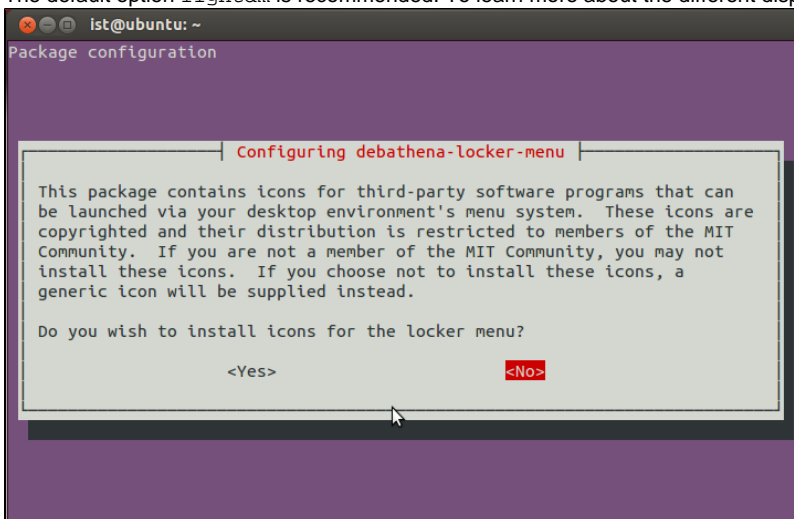
```
ist@ubuntu: ~  
update-alternatives: using /usr/bin/aptitude-curses to provide /usr/bin/aptitude  
(aptitude) in auto mode.  
Setting up libsub-name-perl (0.05-1build2) ...  
Setting up libclass-accessor-perl (0.34-1) ...  
Setting up libio-string-perl (1.08-2) ...  
Setting up libtimedate-perl (1.2000-1) ...  
Setting up libparse-debianchangelog-perl (1.2.0-1ubuntu1) ...  
Processing triggers for libc-bin ...  
ldconfig deferred processing now taking place  
Installing Debathena installer dependencies: wget and dnsutils  
Reading package lists... Done  
Building dependency tree  
Reading state information... Done  
dnsutils is already the newest version.  
dnsutils set to manually installed.  
wget is already the newest version.  
wget set to manually installed.  
0 upgraded, 0 newly installed, 0 to remove and 0 not upgraded.  
OpenAFS is available from both the Ubuntu 'universe' repository  
and a PPA (personal package archive) maintained by the OpenAFS  
team. We recommend using the PPA, as it is mostly likely to  
keep pace with Ubuntu's kernel updates. For some releases,  
the PPA is required for AFS to function correctly at all.  
Is that ok? [Y/n]
```

9. Configure your GNOME Display Manager (GDM).

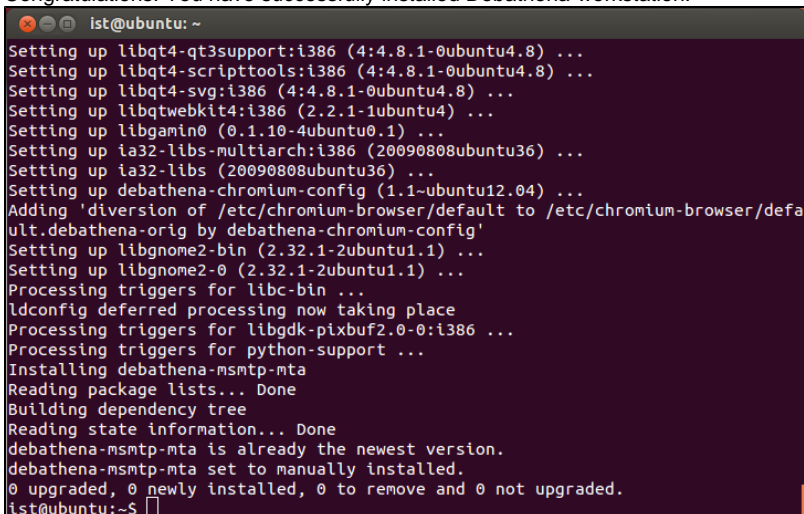




The default option `lightdm` is recommended. To learn more about the different display managers, see [lightdm \(Ubuntu Wiki\)](#).



10. Congratulations! You have successfully installed Debathena-workstation.



Learn more about using Debathena-login-graphical

See [hdarchive:Debathena Landing Page].