

# Manual Oracle 11gR2 Installation

## Manual Oracle 11gR2 Installation

### On this page

- [Choose Oracle client version](#)
- [Installation Instructions - Manual install](#)
- **IMPORTANT** - [Install the MIT Oracle Configuration Files](#)
- [Verify whether the Oracle client is successfully installed](#)
- [See Also](#)



#### For a simpler solution

Most users will be able to simply run the [MIT Oracle 11gR2 Installer](#)

To determine whether the manual Oracle 11g install is needed, see: [Oracle 11g Troubleshooting](#)

### Choose Oracle client version

1. **BrioQuery users on 32-bit or 64-bit machines** should choose the [32-bit Oracle 11gR2 client](#)
2. The [64-bit installer](#) is available for users who do not need BrioQuery.

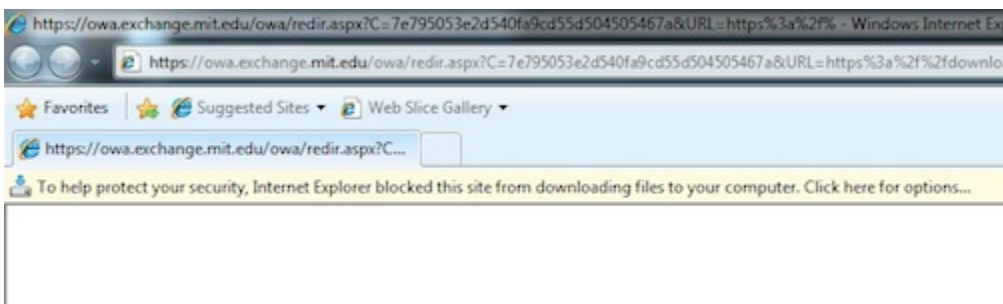
### Installation Instructions - Manual install



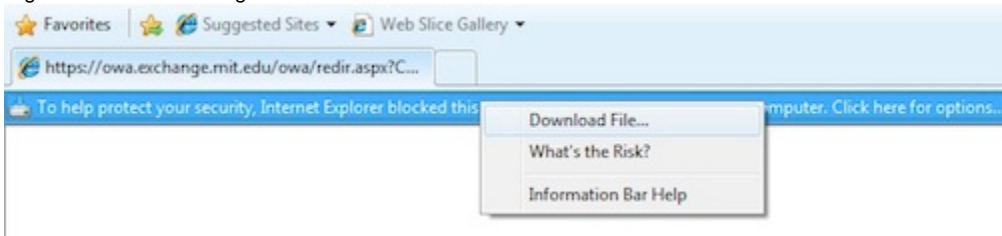
#### Log in as administrator

You will need to be logged in as an administrator to complete these instructions.

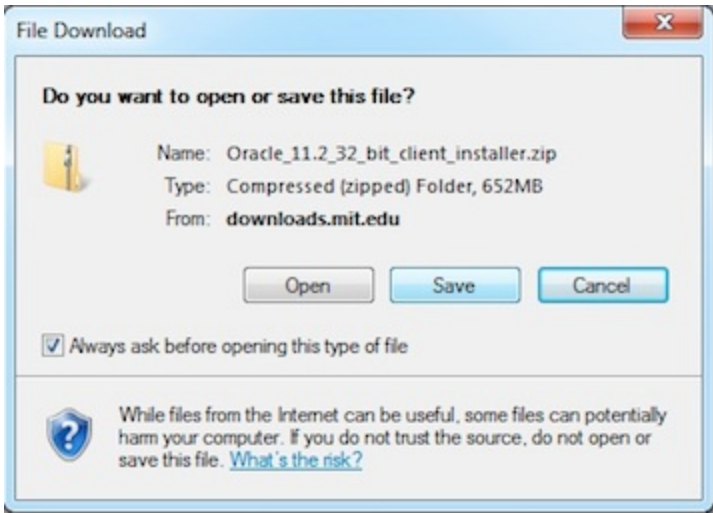
1. Select the 32-bit or 64-bit Oracle client and download the installer. See: [Choose Oracle client version](#)  
*Result:* If you are using Internet Explorer, you may see a download warning



2. Right click on the warning bar and select **Download file**.



3. When prompted to Open or Save, choose Save.



4. **IMPORTANT:** Right-click on the .zip file and choose **Extract All**.  
*Result:* Oracle\_11.2\_32\_bit\_client\_installer folder is created.
5. Open the folder.
6. Navigate on your hard drive to the Oracle installer (64-bit client will be named as such)  
C:\Oracle\_11.2\_32\_bit\_client\_installer\bin\client or  
C:\Oracle\_11.2\_32\_bit\_client\_installer\Oracle\_11.2\_32\_bit\_client\_installer\bin\client.
7. Double-click setup.exe.  
*Result:* A User Account Control window prompts: "Do you want to allow the following program to make changes to your computer?"
8. Select **Yes**.
9. *Result:* A black command window opens.
10. *Result:* The command window closes automatically, and the Oracle Client Installer opens, displaying Step 1 of 6.
11. Choose Administrator and press **Next**.  
*Result:* Step 2 of 7 is displayed, prompting to Select Product Languages.
12. Accept the default choice for English, and click **Next**.  
*Result:* Step 3 of 7 is displayed, prompting to Select Installation Location.
13. Change Oracle base to C:\oracle and click **Next**.  
*Result:* Step 4 of 7, Performing Prerequisite Checks is displayed, with a Progress bar.  
*Result:* Performing Prerequisite Checks screen closes and Step 5 of 7, Summary screen is displayed.
14. Press **Finish**.  
*Result:* Step 6 of 7, Install Product screen is displayed. A Progress bar indicates that the Oracle 11gR2 client is being installed.  
*Result:* Step 7 of 7 screen is displayed, indicating "installation of Oracle client was successful".
15. Click **Close**.
16. Follow the instructions below to install the MIT Oracle Configuration files.

## IMPORTANT - Install the MIT Oracle Configuration Files

### Download the MIT Oracle configuration files

1. Click to download the [MIT Oracle configuration files](#).
2. When prompted to Open or Save, press **Save**.
3. Choose to Save the file to the Desktop.

### Decompress the zip archive

*Result:* **Download Complete** box prompts to **Open**, **Open Folder**, or **Close**.

1. Press **Open Folder**.
2. Right-click on *oracle config files.zip* and choose Extract All.  
*Result:* Extract Compressed (Zipped) folders window prompts to Select a Destination and Extract Files.
3. Accept the default location, and press **Extract**.  
*Result:* oracle config files folder is created on the Desktop.

### Edit sqlnet.ora to add a 64 character crypto-seed

The MIT Data Warehouse requires an encrypted connection between your computer and the Data Warehouse. This is configured by a series of parameters included in the sqlnet.ora file. For security reasons, the SQLNET.CRYPTO\_SEED should be unique for each computer accessing the Data Warehouse. Follow the instructions detailed below to create a unique crypto seed for your sqlnet.ora file.

1. Right-click on **sqlnet.ora** and choose **Open with...**
  - If **Open with...** is not available, choose **Open**, then choose **Select a program from a list of installed programs** and press **OK**.
2. Browse the list of applications and choose.
3. Choose **Notepad** and click **OK**.
4. Locate the entry:  
SQLNET.CRYPTO\_SEED = "replace the text between these quotes with exactly 64 characters, using a upper and lower case letters, numbers and special characters"
5. Replace the text between the quotes with exactly 64 characters, using upper and lower case letters, numbers and special characters. Leave the quotation marks in place.
6. Follow the menu path **File >> Save**.
7. Close the file.

## Move the files into Oracle's network\admin directory

1. Right-click on **ldap.ora** and choose **Copy**.
2. If there is a chance that there is more than one Oracle installation on the machine, you'll need to look in the Path variable to ascertain which Oracle installation appears first in the Path. This is the Oracle installation which will need the MIT configuration files.
  - To find the Path variable, go to **Start > Control Panel > System > Advanced > Environment Variables**
  - Look for Path.
  - Copy and paste the path into a text editor such as Notepad. Look for the first time that Oracle appears. The entry will be for the Oracle bin directory.
3. Navigate, on your hard drive, to the Oracle installation. If there is more than one Oracle installation, be sure to choose the one that appeared first in the Windows Path variable (see Step 1).
4. Within the Oracle directory structure, navigate to **c:\oracle\product\11.2.0\client\network\admin**.
5. Copy **ldap.ora** and **sqlnet.ora** to this location.
6. When prompted, choose **Copy and Replace**, to replace the generic Oracle **sqlnet.ora** file.

## Verify whether the Oracle client is successfully installed

- [Test whether you can successfully connect to the database \(for example Data Warehouse\) using Oracle SQLPlus](#)

## See Also

- [Oracle Landing Page](#)