

# Citrix Workspace for Windows Installation and First Launch

## Citrix Workspace for Windows Installation and First Launch

On this page:

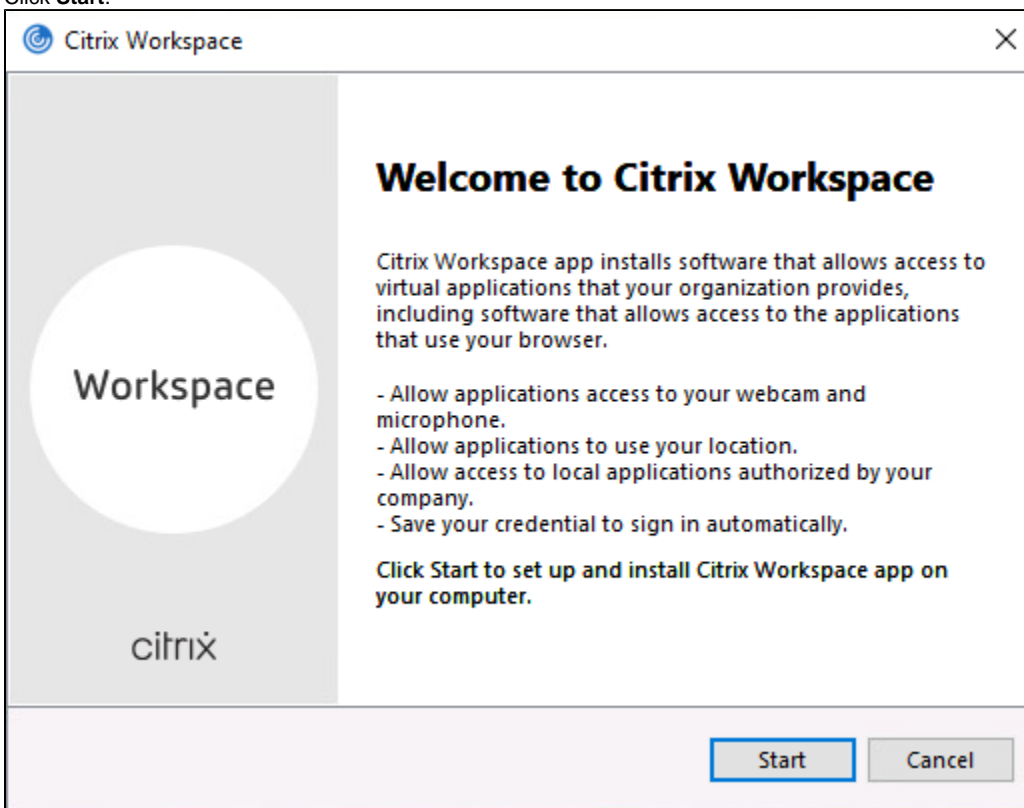
[Install Citrix Workspace Client for Windows](#)  
[Launching Citrix Applications from a Web Browser](#)  
[Note for off-campus users](#)  
[Related Links](#)



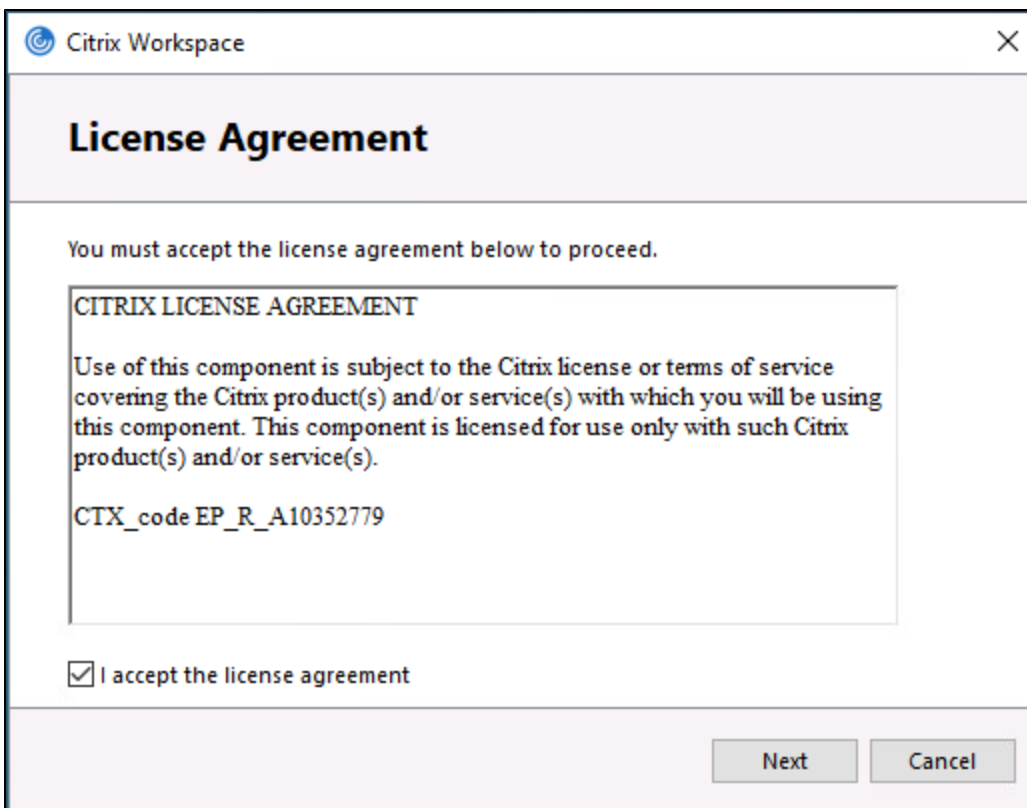
To use Citrix, your Kerberos password cannot be more than three years old. If your password exceeds this age limit, you need to [change your Kerberos password](#)

## Install Citrix Workspace Client for Windows

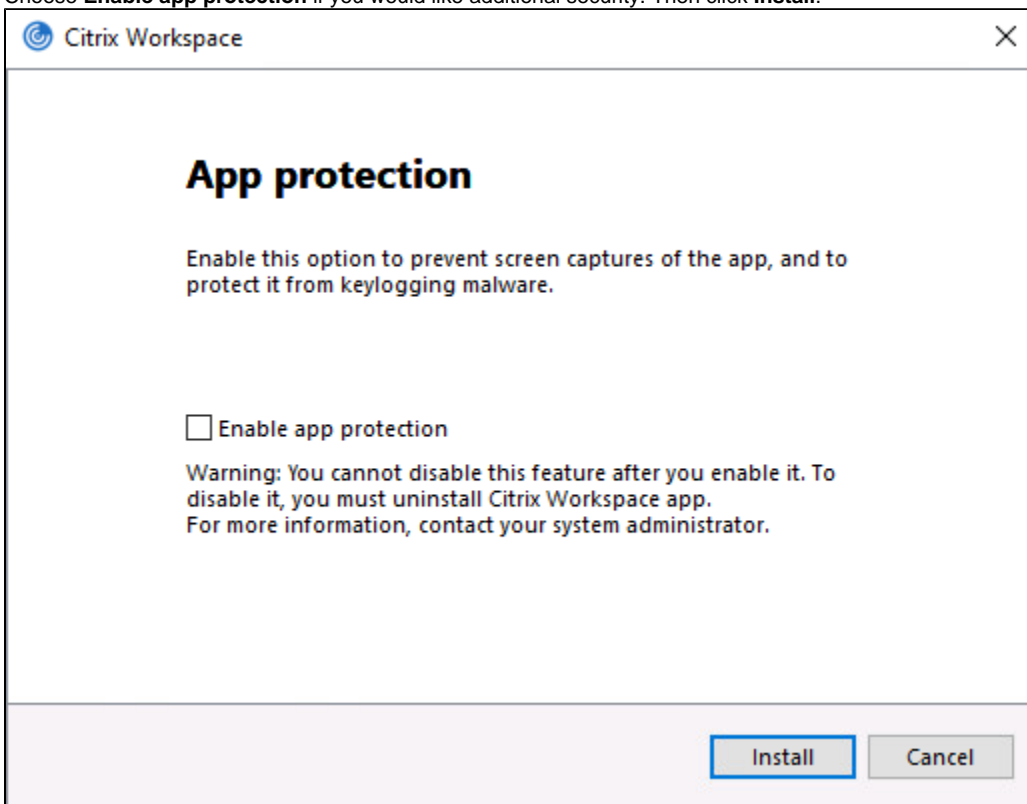
1. Download the [Citrix Workspace](#) client for Windows.
2. When prompted, choose to **Save** the installer on your Desktop or other download location, or in the browser Downloads window, double-click to launch the Citrix Receiver installer
3. Click **Start**.



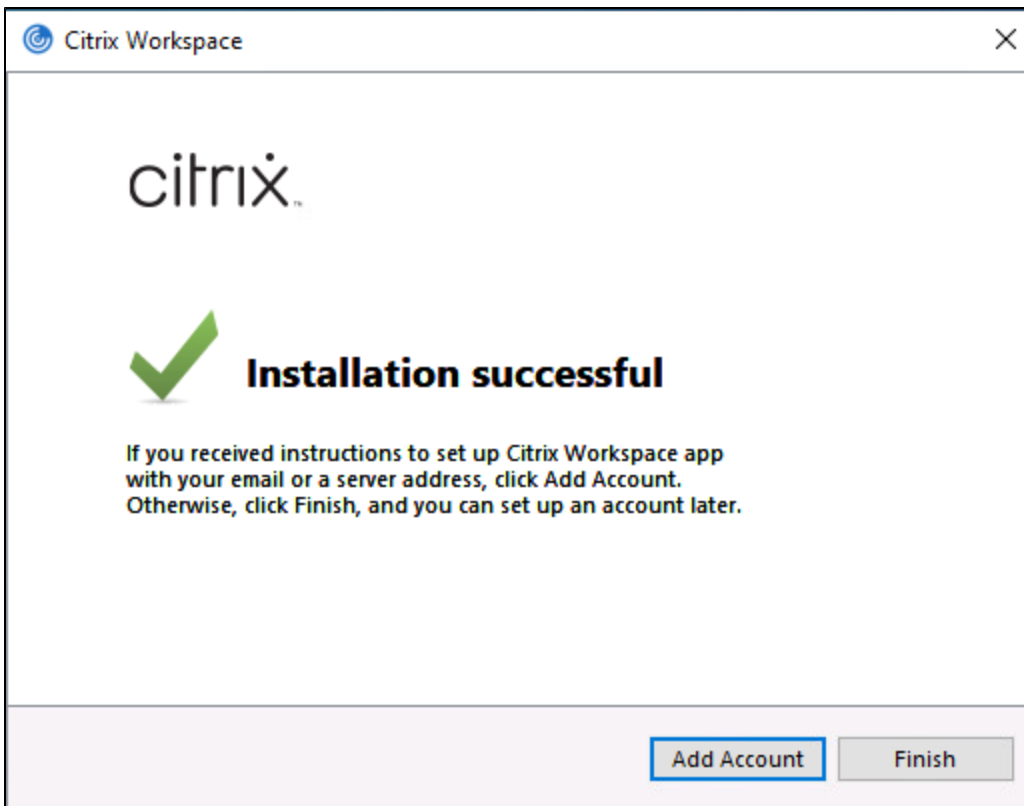
4. Click **I accept the license agreement** and then click **Next**



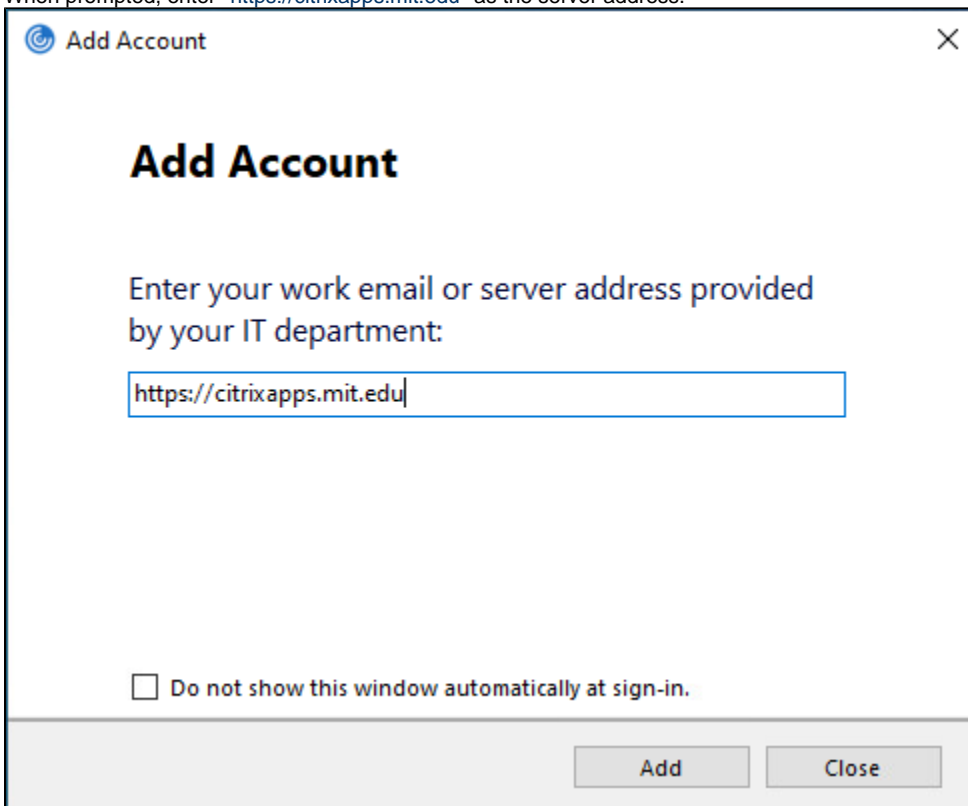
5. Choose **Enable app protection** if you would like additional security. Then click **Install**.



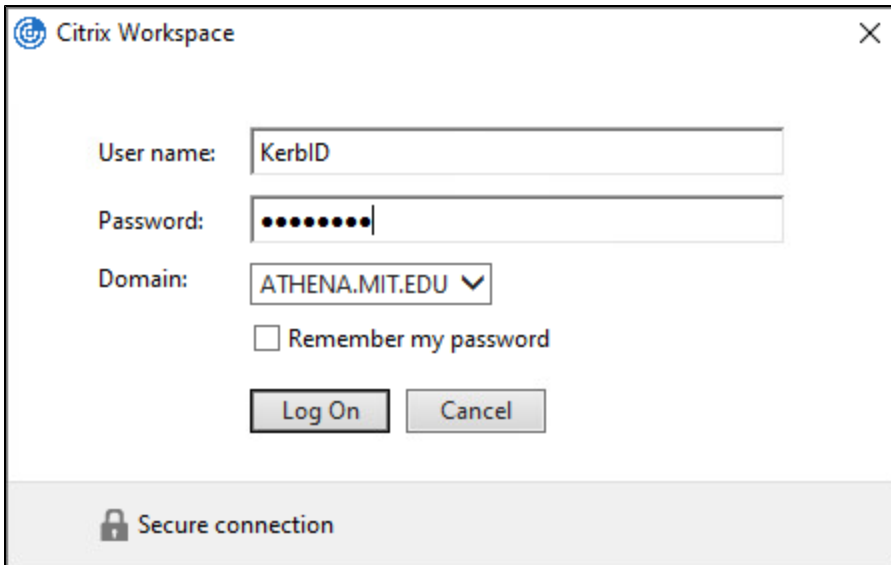
6. When the installation is complete, choose to **Add Account**



7. When prompted, enter `*https://citrixapps.mit.edu*` as the server address.

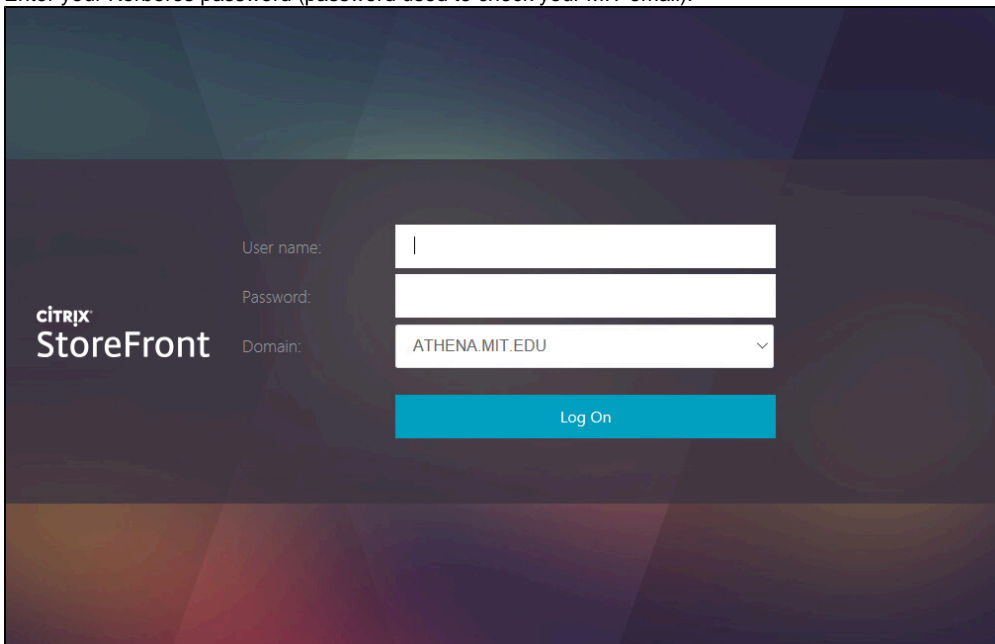


8. You'll be prompted to enter your Kerberos username and password. Click Log On and you'll be presented with your available applications.

A screenshot of the Citrix Workspace login window. It features a title bar with the Citrix logo and the text 'Citrix Workspace'. The main area contains three input fields: 'User name:' with 'KerblD' entered, 'Password:' with masked characters, and 'Domain:' with 'ATHENA.MIT.EDU' selected from a dropdown. Below these is a checkbox for 'Remember my password' which is unchecked. At the bottom are 'Log On' and 'Cancel' buttons. A status bar at the very bottom shows a lock icon and the text 'Secure connection'.

## Launching Citrix Applications from a Web Browser

1. Navigate in your web browser, to <http://citrixapps.mit.edu><https://citrixapps.mit.edu>.  
With the Citrix Workspace client successfully installed, you should see the Citrix logon prompt.
2. Enter your Kerberos username (portion of your MIT email address before the @mit.edu).
3. Enter your Kerberos password (password used to check your MIT email).

A screenshot of the Citrix StoreFront login page. The background is dark with a geometric pattern. On the left, the 'citrix StoreFront' logo is visible. On the right, there are three input fields: 'User name:', 'Password:', and 'Domain:' with 'ATHENA.MIT.EDU' selected from a dropdown. Below these fields is a large blue 'Log On' button.

*Result:* Applications available from the MIT Citrix servers are displayed.

4. Click the icon for your selected application.

## Note for off-campus users

To access applications via Citrix from off-campus locations or from a private subnet, you will need to connect to the MIT VPN (Virtual Private Network) before connecting to Citrix.

See: [VPN at MIT](#)

## Related Links

- [Getting Started with Citrix](#)
- [Open or save files in Citrix Workspace](#)
- [Data and Reporting Services - Using BrioQuery via Citrix Receiver on Mac OS X](#)
- [Citrix Workspace for Macintosh Installation and First Launch](#)
- [Troubleshooting Common Citrix Application Launch Issues](#)
- [Citrix Landing Page](#)