

MECM - SCCM - Creating Queries

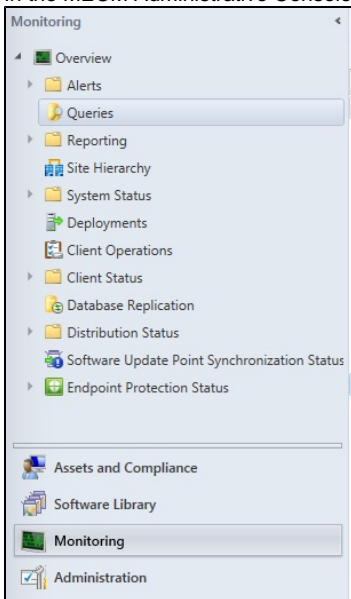
MECM - SCCM - Creating Queries

Queries are used to find a group of computers based on a set of criteria.

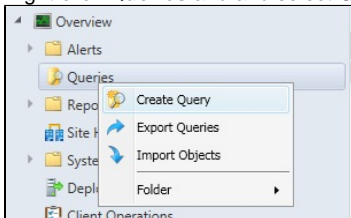
Build a Query

Queries can be built using the dropdown menus in the MECM Administrative Console or by directly editing the raw WQL code. The easiest mode is to create a query via the dropdown menus. You may come across raw SQL queries while searching the web and you can paste the SQL into the WQL (SQL for WMI) box.

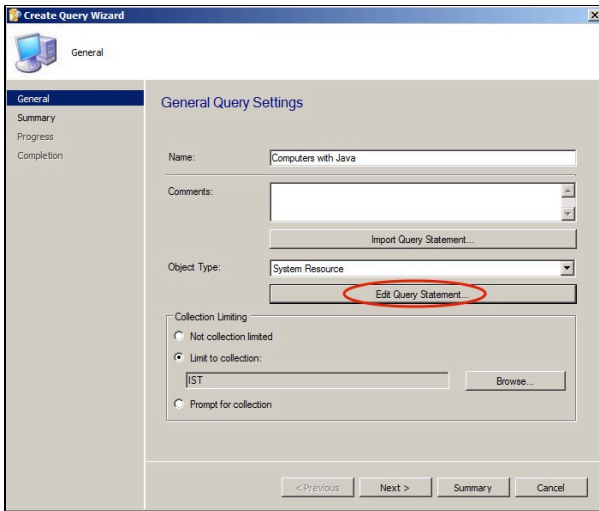
1. In the MECM Administrative Console go to Monitoring and click **Queries**.



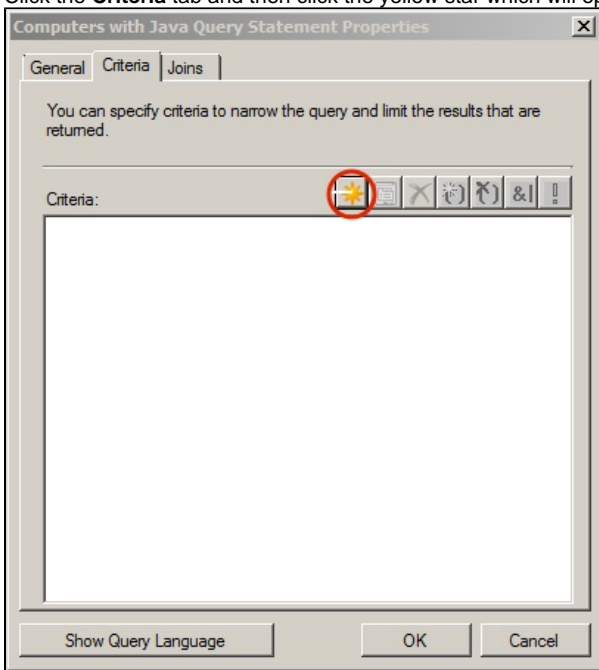
2. Right-click **Queries** and select **Create Query**.



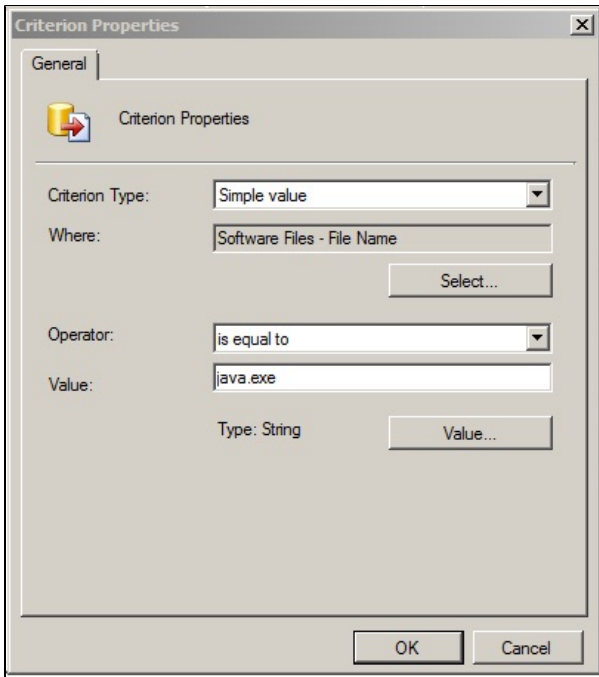
3. Give your query a name, choose a collection to limit your query, and then click **Edit Query Statement...**



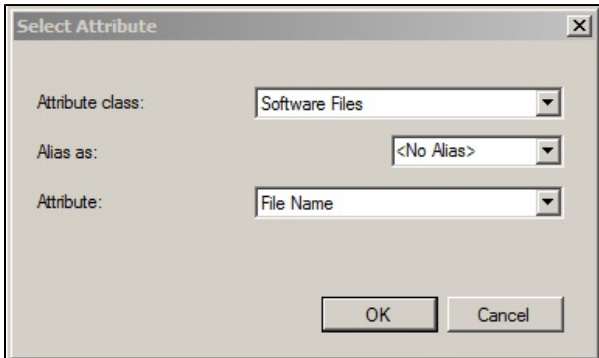
4. Click the **Criteria** tab and then click the yellow star which will open up the Criterion Properties window.



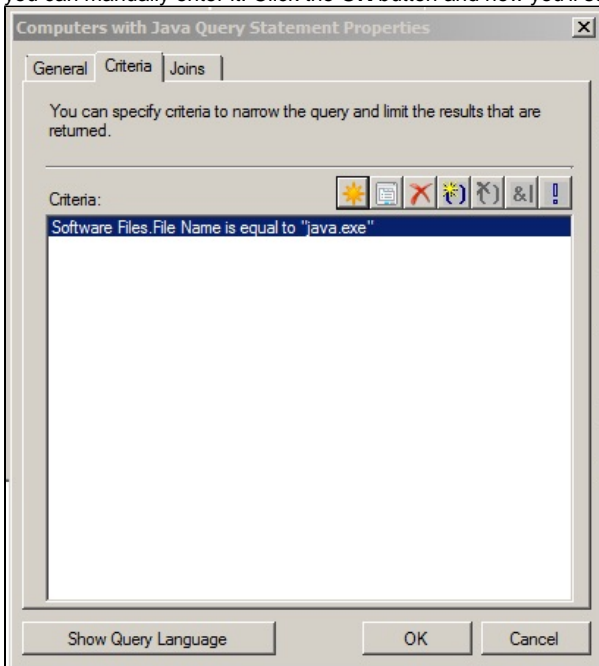
5. Click the **Select...** button.



6. You need to choose an **Attribute class** and **Attribute**.

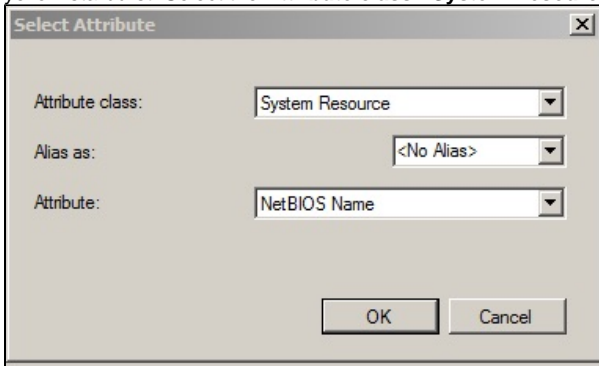


7. Select an **Operator**. Then choose a value by clicking the **Value...** button and select a value from the list. If you already know the value, you can manually enter it. Click the **OK** button and now you'll see your query with a criterion added.



You need to add an attribute to display for your query. Typically this is the computer name. Click the **General** Tab and then click the

yellow starburst. Select the **Attribute class - System Resource** and the **Attribute - NetBIOS Name**.

A screenshot of a 'Select Attribute' dialog box. The dialog has a title bar with a close button (X). It contains three dropdown menus: 'Attribute class:' with 'System Resource' selected, 'Alias as:' with '<No Alias>' selected, and 'Attribute:' with 'NetBIOS Name' selected. At the bottom are 'OK' and 'Cancel' buttons.

Select Attribute

Attribute class: System Resource

Alias as: <No Alias>

Attribute: NetBIOS Name

OK Cancel

8. You may also want to add other columns, such as the software name you are querying, the version, etc. Click **OK** and choose to sort **Ascending**.
9. Click **OK** twice and you'll be back at the Create Query Wizard. Click **Next>** and you'll see a summary showing the WQL code. Click **Next>** and then **Close**.
10. Run your query by double-clicking the query from the query list. You'll see a list of computers that fit the criteria that you specified.

See Also

- [Microsoft Endpoint Configuration Manager \(MECM\) Landing Page](#)