
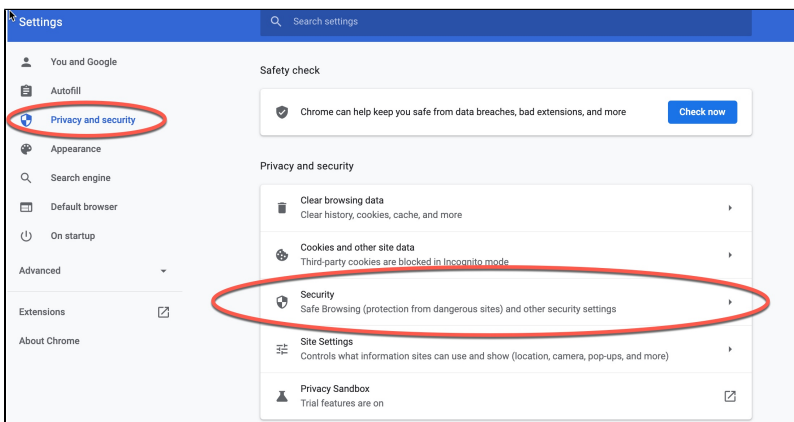


Delete MIT Personal Certificates in Chrome for Windows

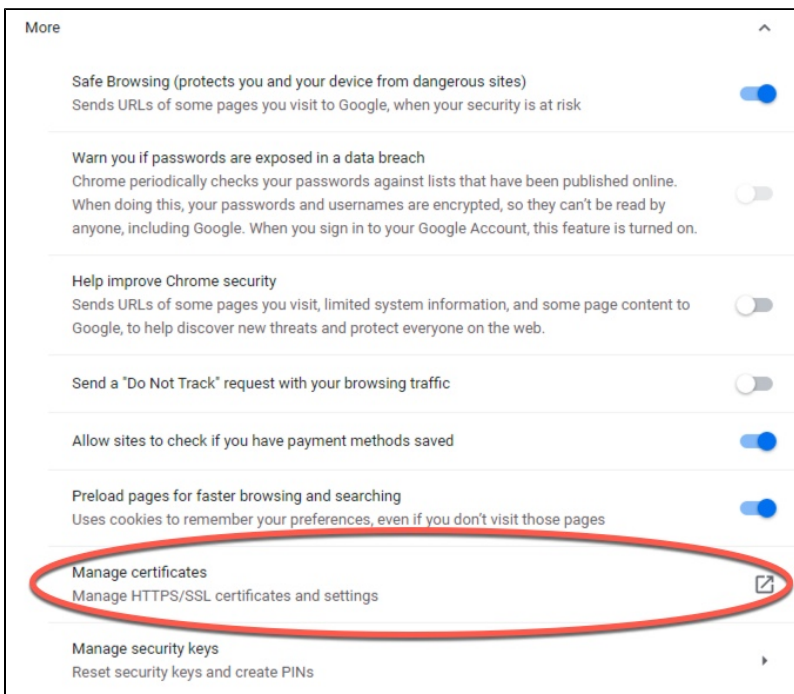
Delete MIT Personal Certificates in Chrome for Windows

 **WARNING:** If you have used S/MIME for email encryption, you should [export certificates](#), in order to retain a backup copy, before deleting them from the browser.
[How can I tell if I've used S/MIME for email encryption?](#)

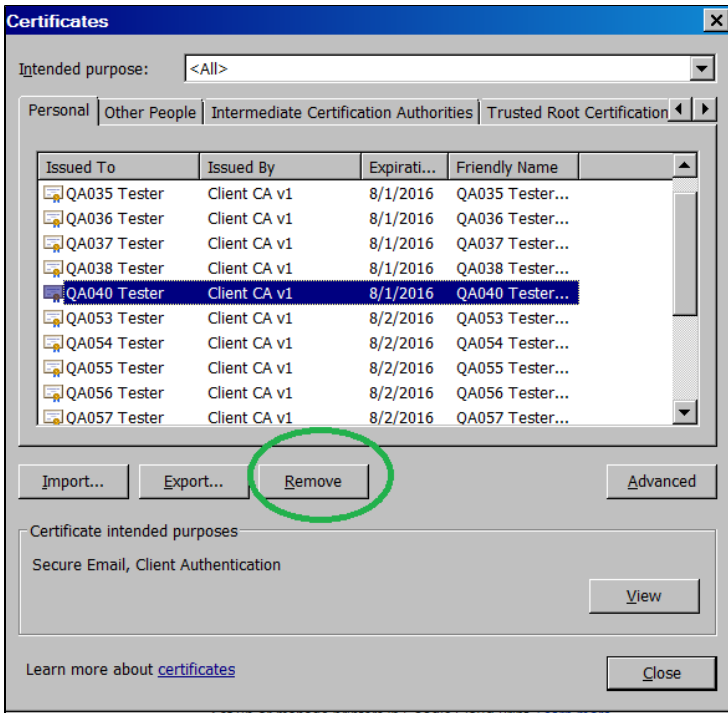
1. In your Chrome browser, go to <chrome://settings/privacy>
2. In the top "Privacy and Security" section, select "More".



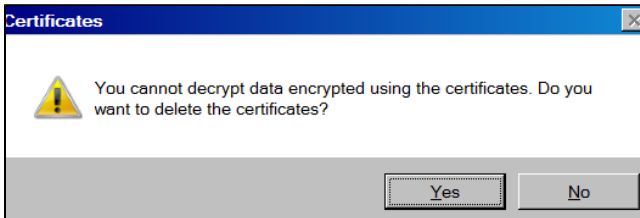
3. Scroll down and select "Manage Certificates".



4. Select the certificate or certificates to delete, then click **Remove**.



5. Click **Yes** in the Certificates warning box.



See Also

- [Certificates Landing Page](#)