

# Am I on the the win.mit.edu domain? How can I tell?

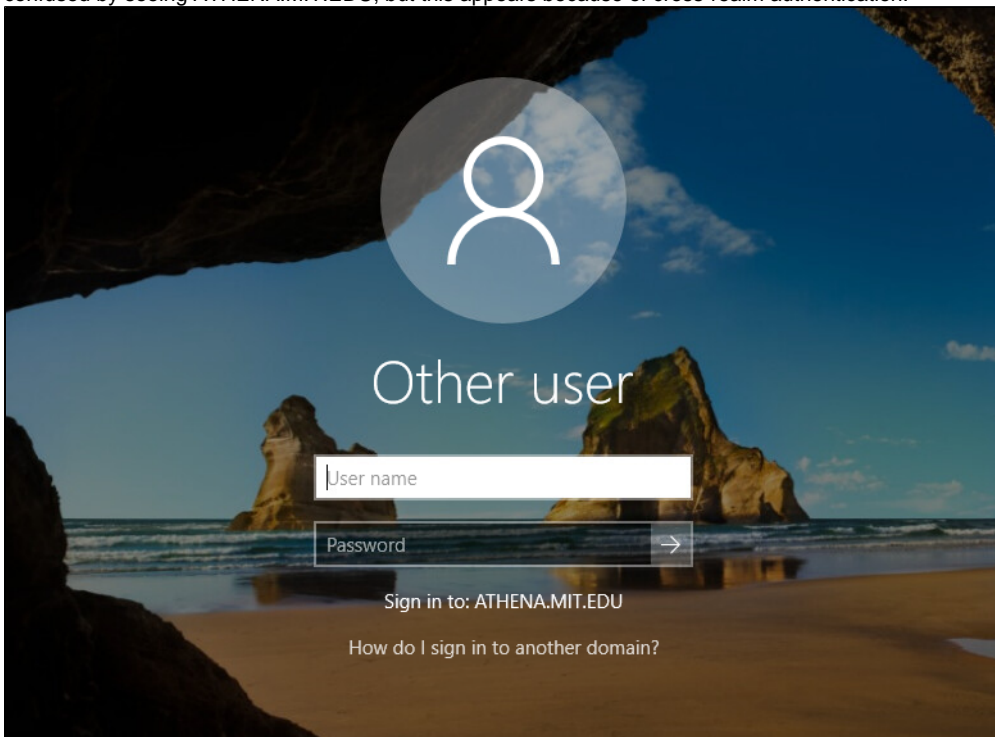
## Am I on the the win.mit.edu domain? How can I tell?

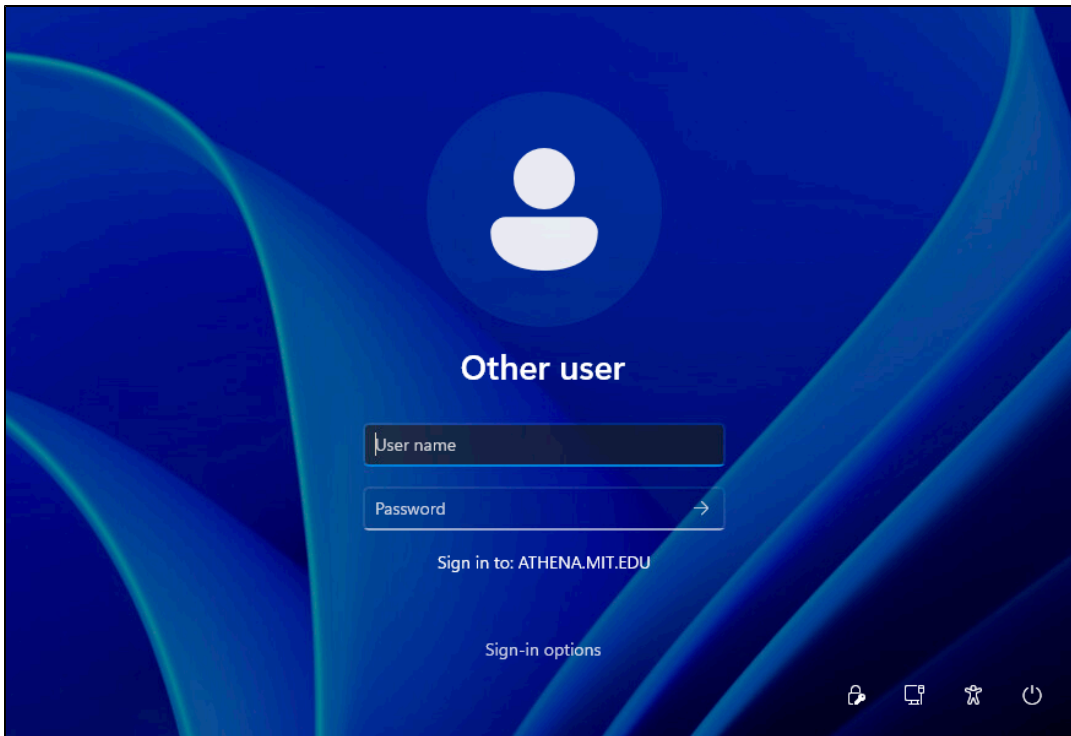
To ascertain whether you are on the [win.mit.edu](#) domain:

[Windows 10/11](#)  
[See Also](#)

### Windows 10/11

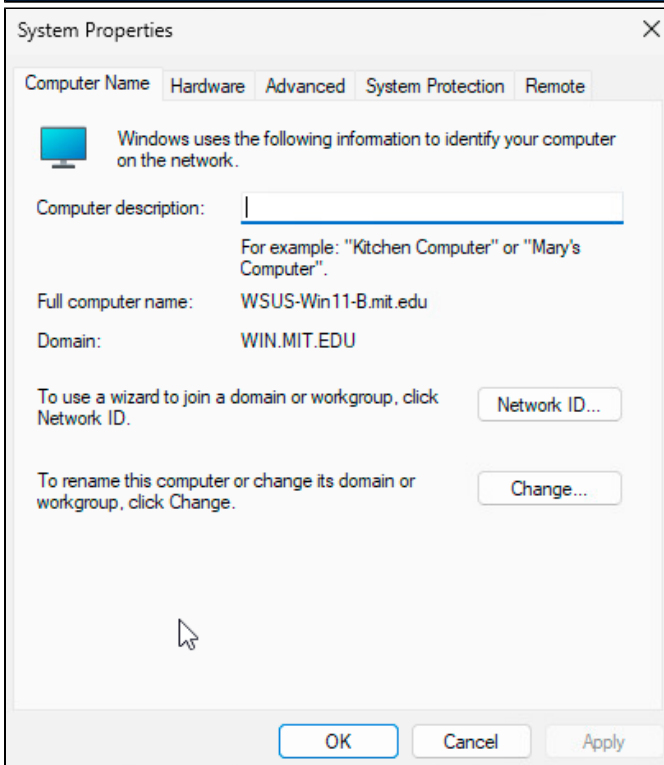
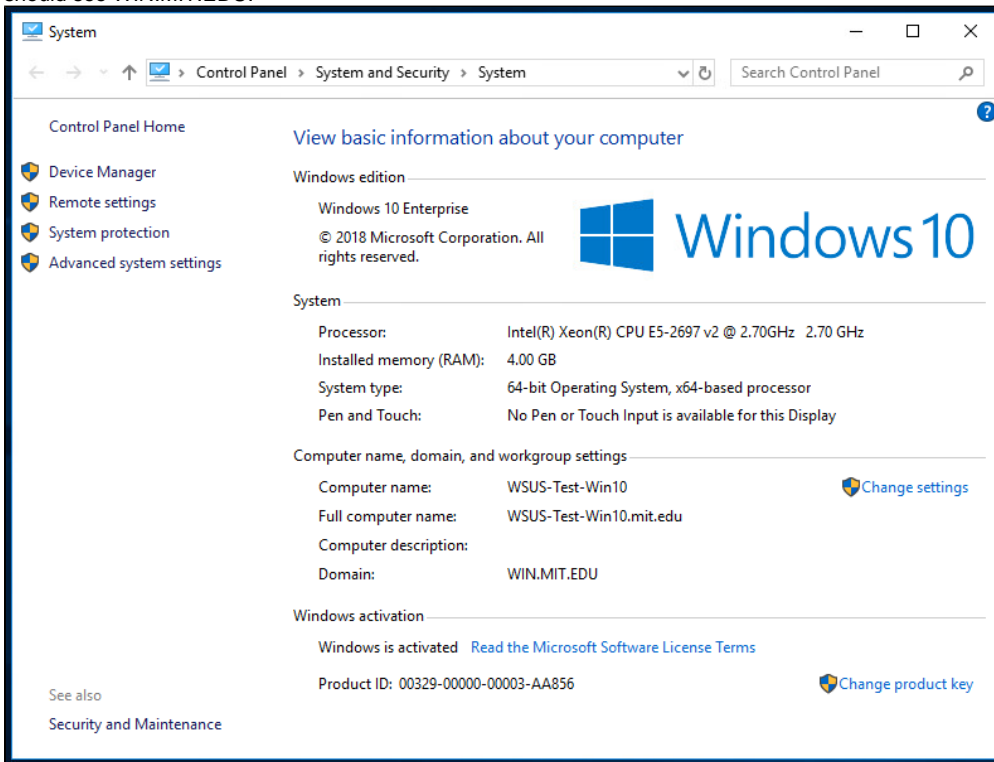
1. At the Windows logon screen if you see "Sign in to: ATHENA.MIT.EDU", your computer is joined to the WIN domain. You may be confused by seeing ATHENA.MIT.EDU, but this appears because of cross-realm authentication.





2. Or you can logon as a local account and bring up the System Properties by right-clicking This PC from the Windows file explorer navigation pane or from the desktop. Or press the Windows key and Break key to bring up the System Properties. In the Domain field you

should see WIN.MIT.EDU.



## See Also

- WIN.MIT.EDU Landing Page