

# FSILG Network Information

## FSILG Network Information



FSILG network infrastructure equipment is managed by IS&T, which is responsible for maintaining the wired/wireless switches, wireless access points (AP), and connectivity of the house to MITnet. Houses are responsible for maintaining any wiring/cabling from the network jacks in the wall back to the switches.

If there is an issue with the network, the house should notify IS&T ([servicedesk@mit.edu](mailto:servicedesk@mit.edu)). Note: IS&T staff cannot gain access to a house without a house member's presence.

More information about FSILG network infrastructure maintenance and responsibilities can be found in the [Network Management Program \(NMP\) Terms of Service](#) on the AILG web site.

The FSILG network infrastructure and connectivity to MITnet is similar to most MIT campus buildings. Thus, articles found in the Knowledge Base will be applicable to an FSILG just as they are to the rest of MIT. Exceptions to this, and information specific to the FSILG network infrastructure, can be found on this page.

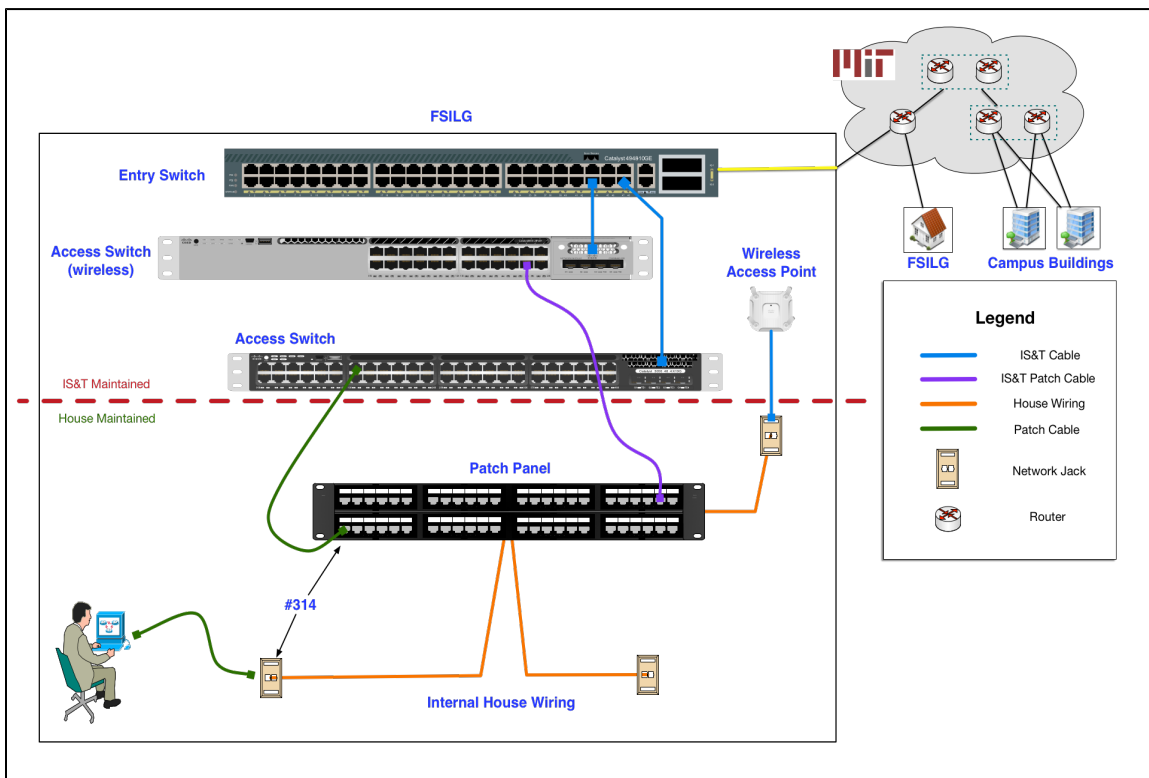
## Network Switch Equipment



MIT IS&T Managed Devices [no user access] - Please Do NOT Touch or Unplug Cables. (except to patch/connect house network drops to "Access Switch")

Note: If you need to power off a device for ANY reason, please contact [servicedesk@mit.edu](mailto:servicedesk@mit.edu) in advance.

## Network Diagram



### Entry Switch (Cisco 4948)



### Access Switch (Cisco 3650)



## Other Articles:

### General Network Information

Page: [FSILG Building and Network Address Information \(IS&T Contributions\)](#)

---

### FSILG, IS&T Network Contacts

No content found for label(s) fsilg,network,net\_contacts.

---

### Hostnames and Static IP addresses

Page: [Create hostname with static ip address for FSILG network contacts \(IS&T Contributions\)](#)

---

Page: [Delete a hostname or static ip address for FSILG network contacts \(IS&T Contributions\)](#)

---

## See Also

- [MIT Network Landing Page](#)