

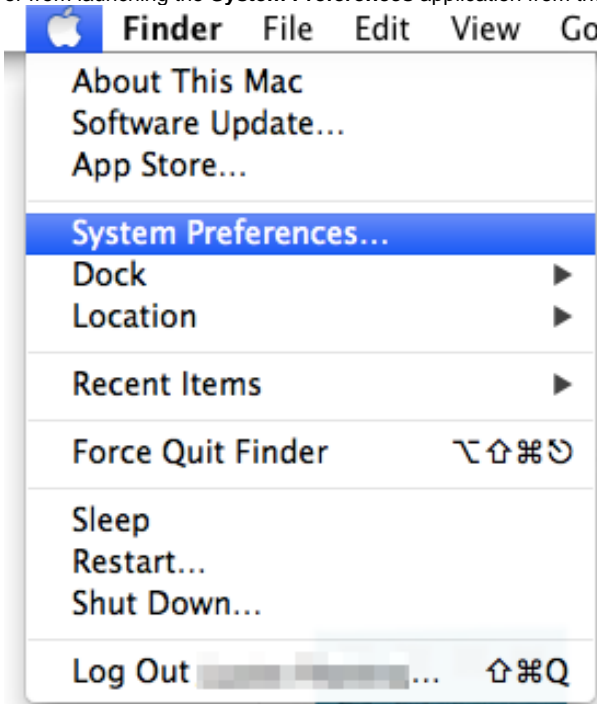
How do I set up networking in Mac OS X?

Q: How do I set up networking in Mac OS X?

Answer

Note: These instructions were created using Mac OS X version 10.8.2. Locations, labels, and behaviors may differ in other versions of the OS.

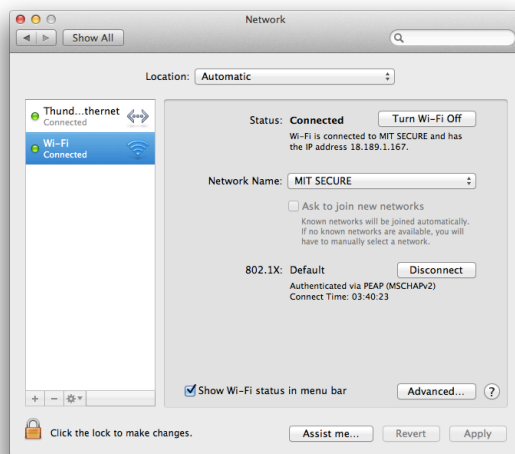
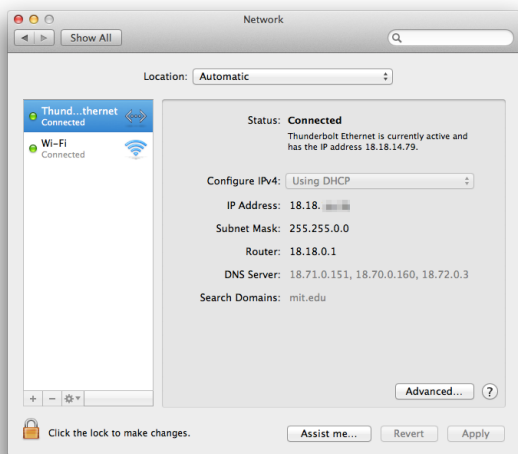
1. Network preferences can be accessed by clicking on the **Apple** menu in the upper left hand corner and choosing **System Preferences**, or from launching the **System Preferences** application from the Dock.




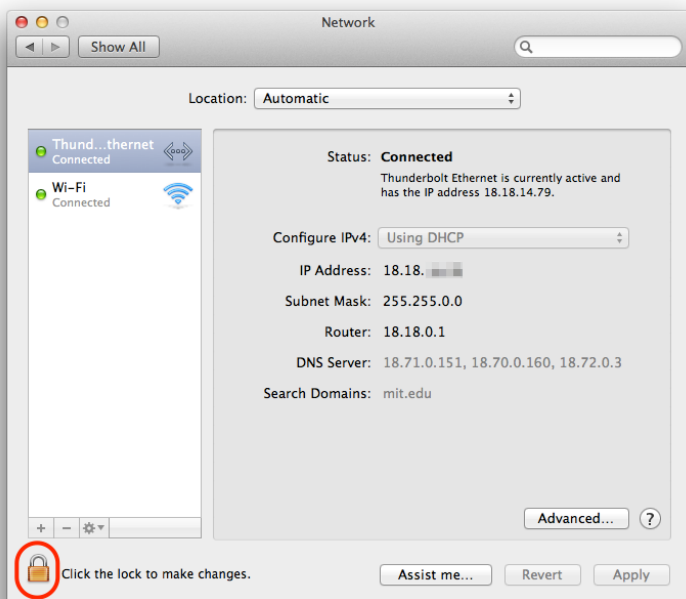
2. Click on the **Network** icon under the "Internet and Network" category.



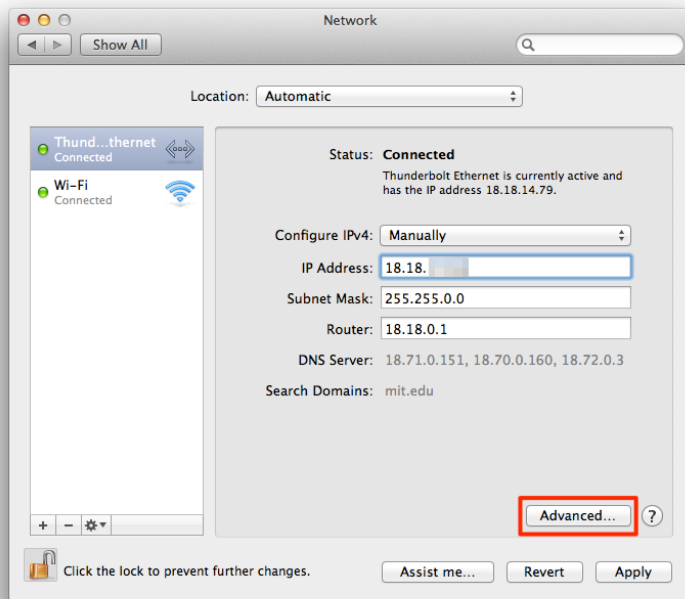
3. Select the network adapter you wish to configure (typically named either "Built-in Ethernet" or "Wi-Fi" / "AirPort") from the left-hand side of the window.



 **Note:** You may need to click the lock on the lower-left of the window and type in an Administrator username and password in order to make changes to these settings.



4. Change the settings as needed, such as defining an IP address or selecting a wireless network to join. If you need further configuration options that aren't listed, click the **Advanced...** button.



5. When you are finished, click the **Apply** button and quit the application.

