

Windows 11 - Clean Installation

Windows 11 - Clean Installation

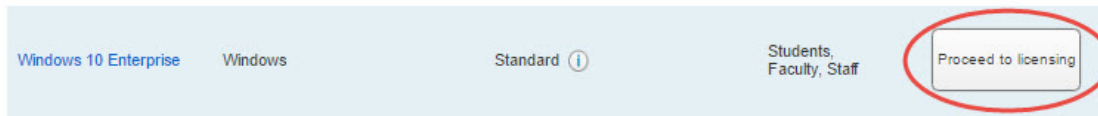


These instructions will install a fresh, new copy of Windows 10 on a new or current system, **without preserving user data or applications**. If you are installing on a current machine, be sure to **backup files you wish to retain**.

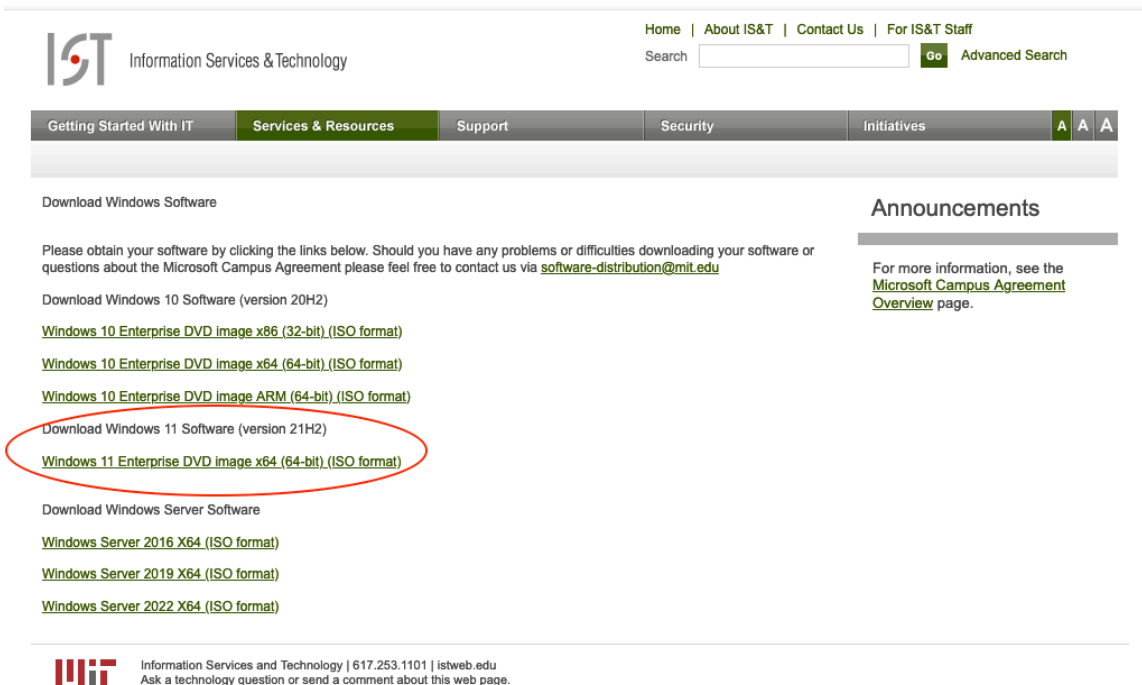
Preparing Windows 11 Install Media

You will need to download the Windows 11 install file and then create a bootable DVD or flash drive.

1. Visit the [IS&T Software Grid](#) and locate Windows 10. Then click **Proceed to licensing**.



2. Read then click **proceed to license agreement**
3. Read then click **I agree to and accept the terms above**
Result: The Download Windows Software page opens.



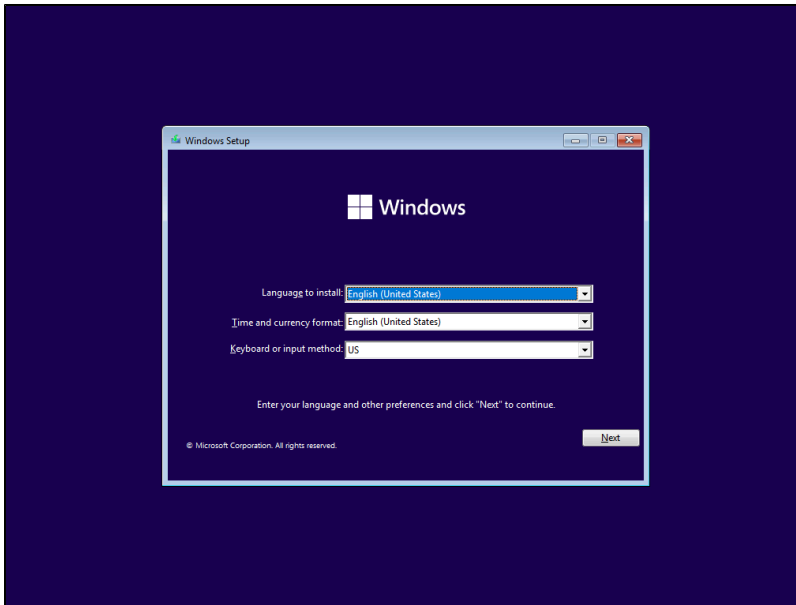
4. Click to download **Windows 11 Enterprise DVD image 64-bit (ISO format)**
5. Create a bootable DVD or USB Drive with Windows 11.
For instruction on how to create a bootable DVD or USB drive for installing Windows see the article [How do I create bootable USB drives for ISO files on a Windows machine?](#).

Doing a Clean Installation of Windows 11

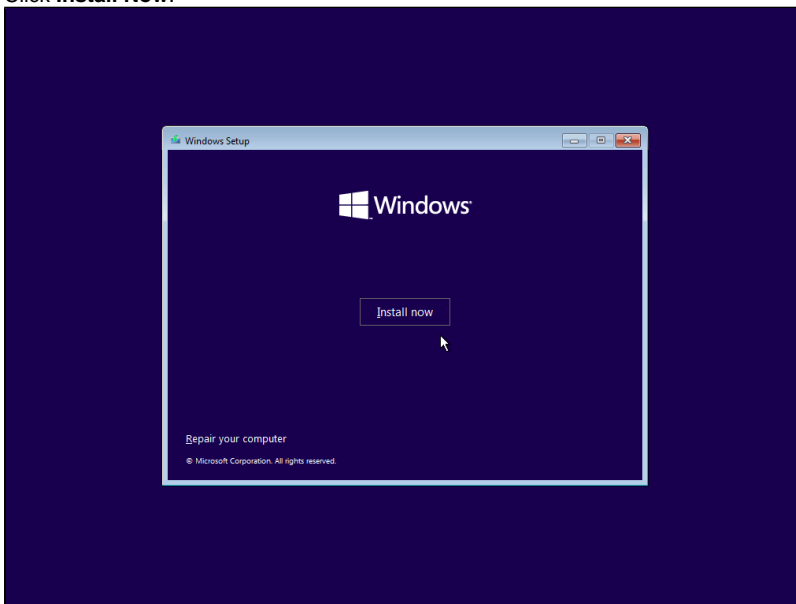
1. Insert the Windows 11 install media (DVD or flash drive). Restart your computer **while holding the F12 function key**.
Result: You will see a list of Boot Options.

#. Using the arrow keys select either **CD/DVD/CD-RW Drive** or, **USB Storage device**. Then press the **Enter** key.
Result: The media will boot into the language confirmation page.

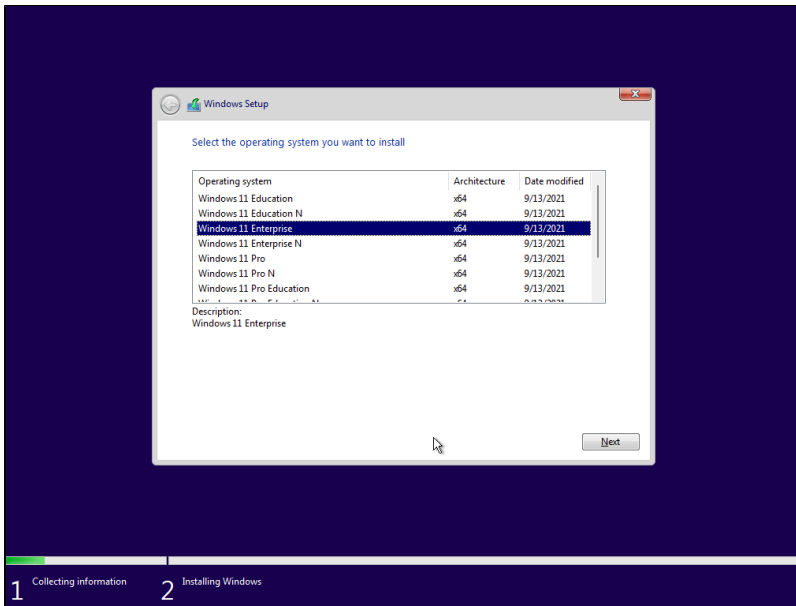
1. Confirm your language preferences and click **Next**.



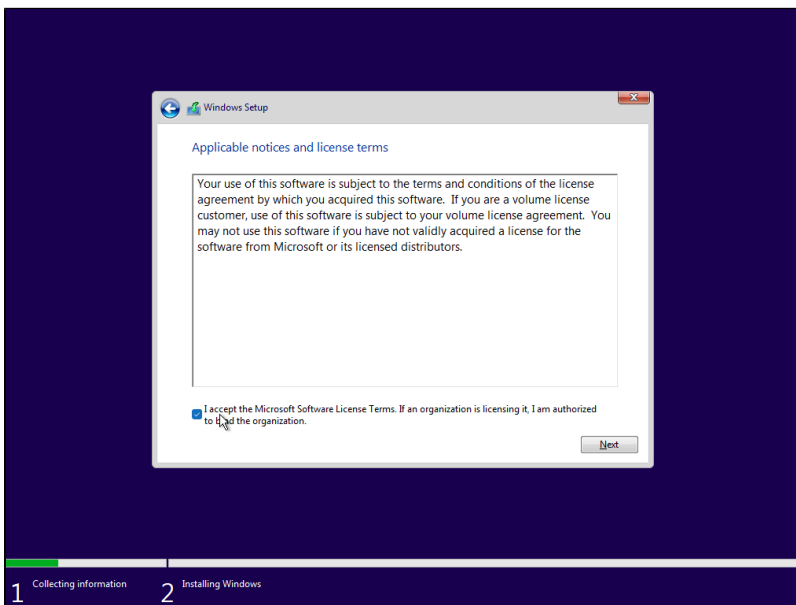
2. Click **Install Now**.



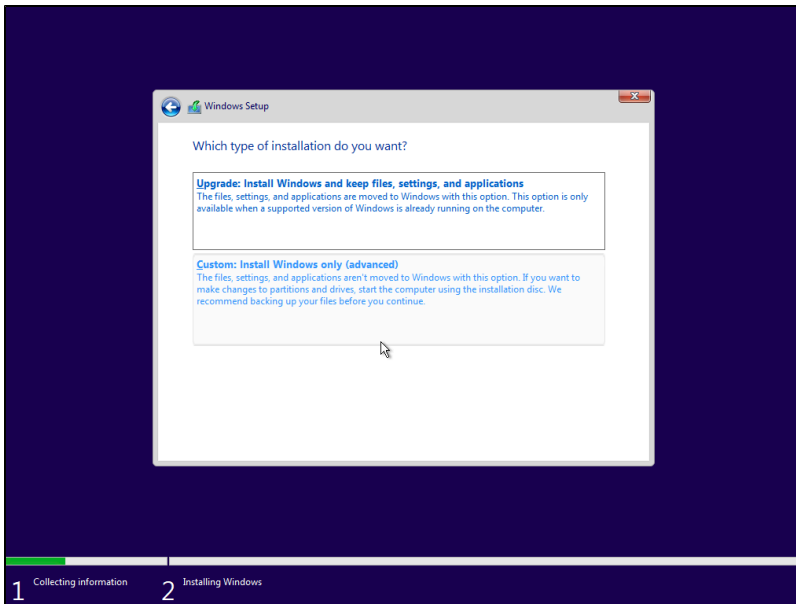
3. Select Windows 11 Enterprise and then click **Next**.



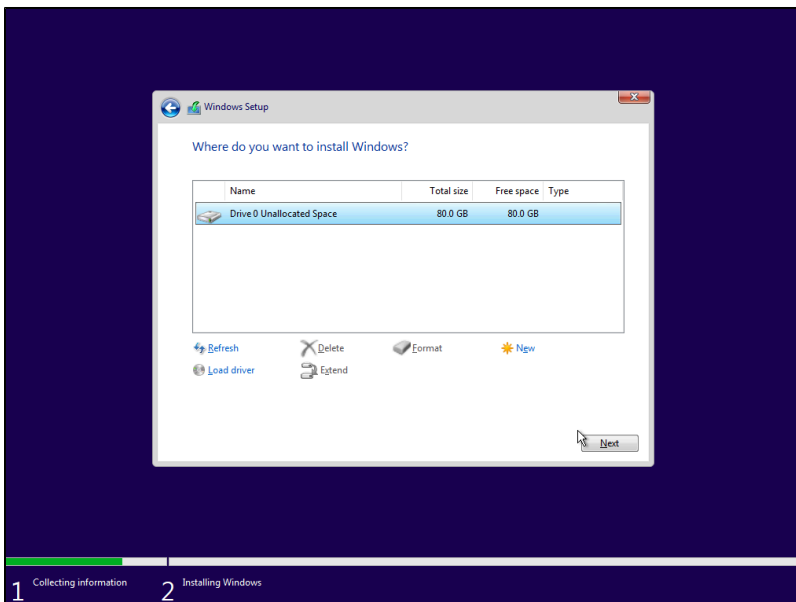
4. 1
5. Click **Accept License Terms** and then click **Next**.




6. Click **Custom: Install Windows Only (Advanced)**.

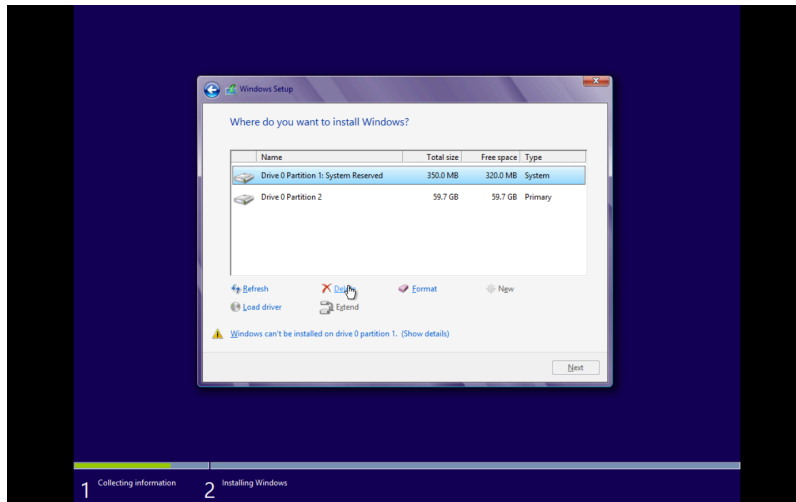


7. Select the hard drive onto which you would like to install Windows 11.

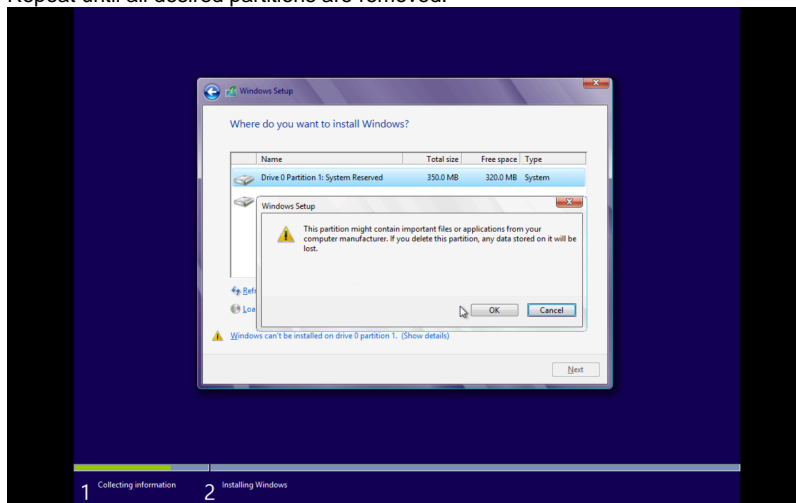


 If you wish to wipe the hard drive before installing Windows 11, click **Drive Options: (Advanced)** and follow the following instructions, otherwise skip to step 6:

- From the Advanced menu, select the partitions that you wish to remove and click **Delete**, and **OK** to confirm.

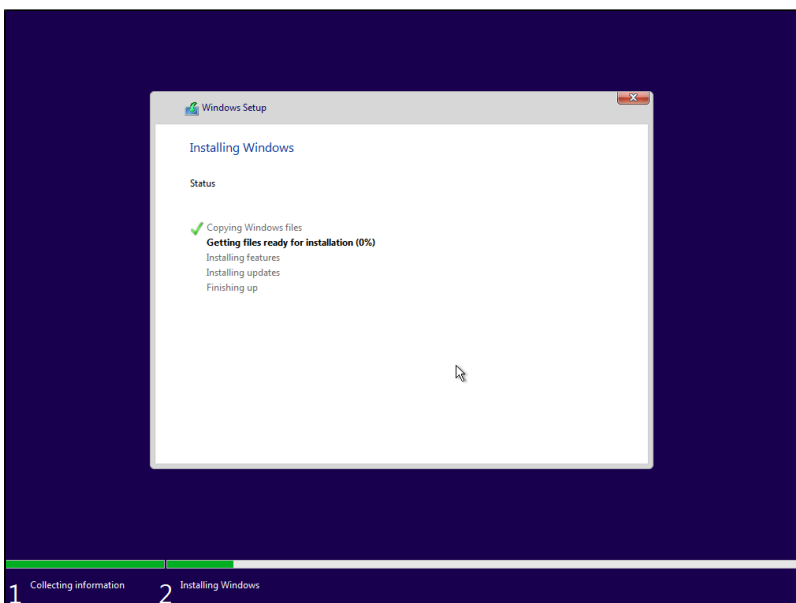


b. Repeat until all desired partitions are removed.



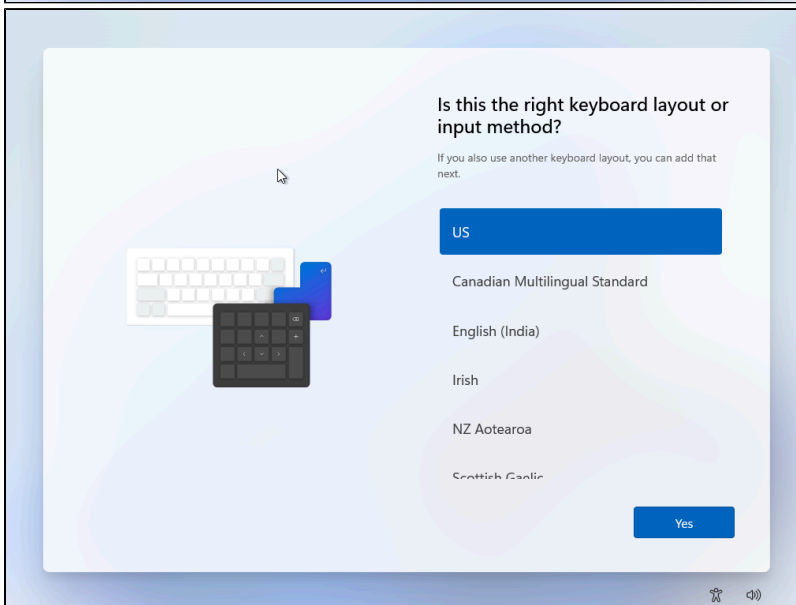
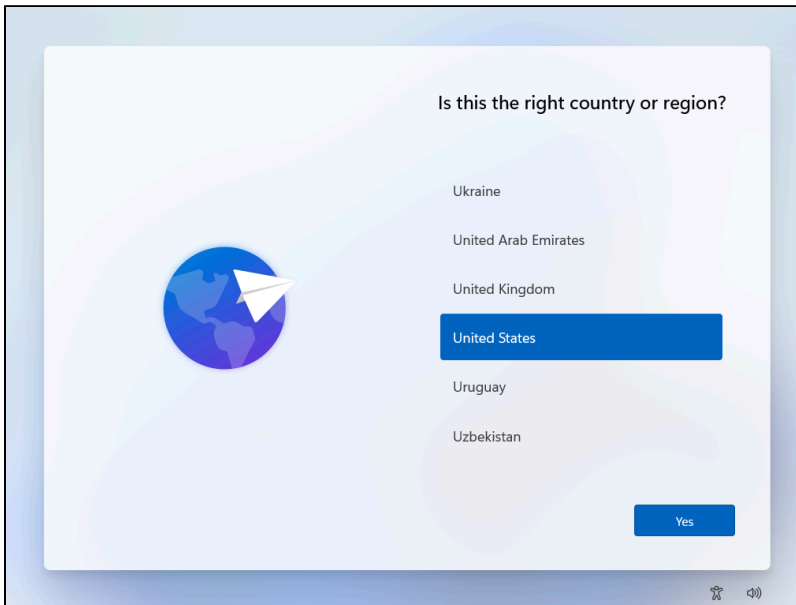
c. When a single "Unallocated Space" remains, then click **Next**.

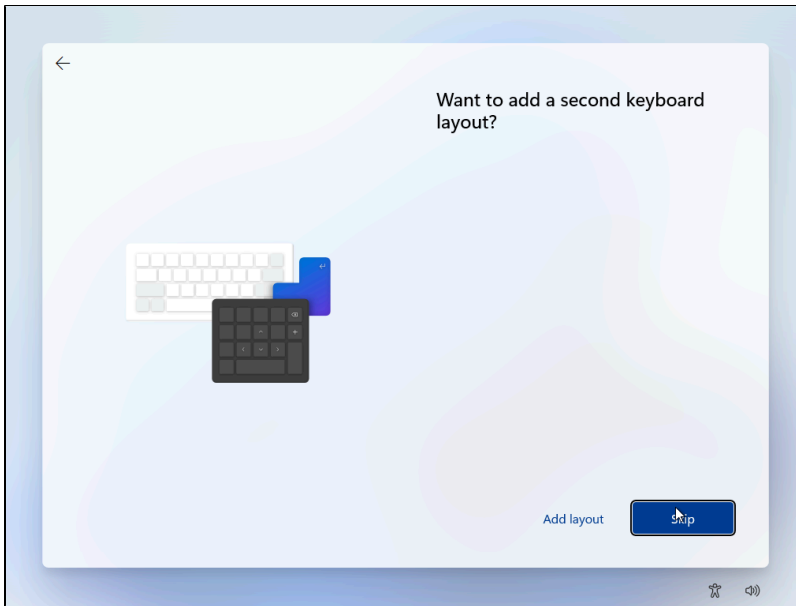
8. Click **Next** and Windows will begin its installation. This might take a few minutes. Additional restarts may occur.



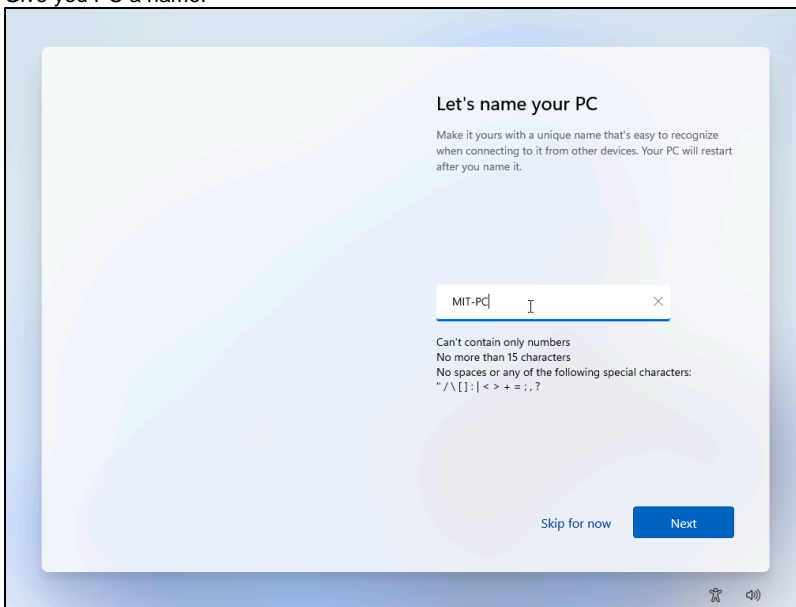
9. Once installation of the operating system is complete, you will need to configure the system for first time use. Walk through the prompts

to customize your settings.

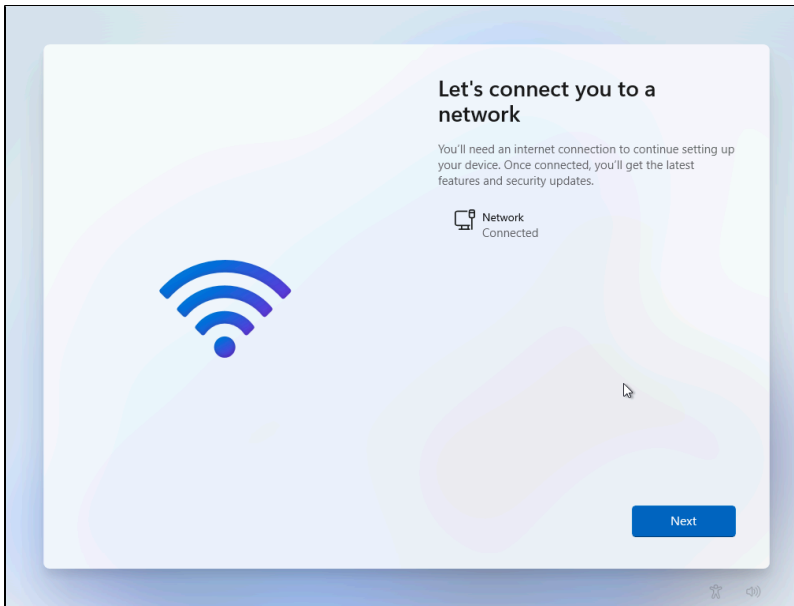




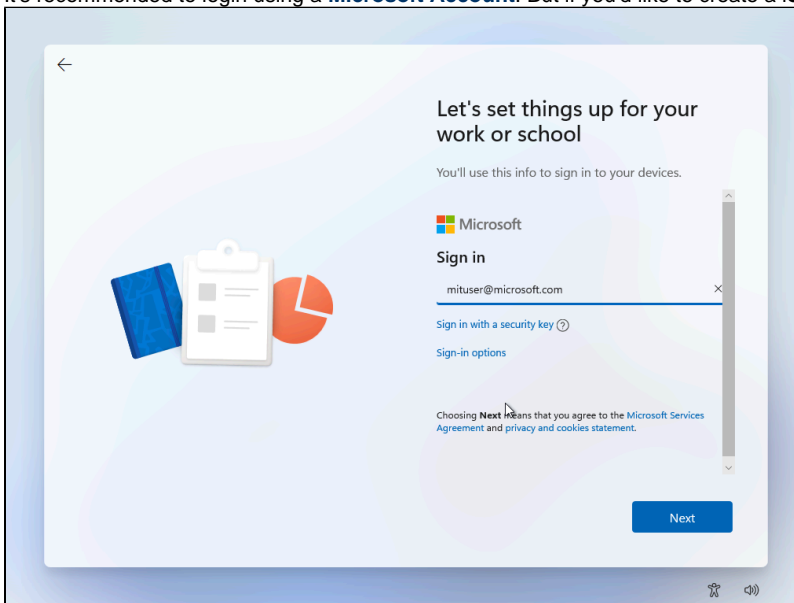
10. Give you PC a name.



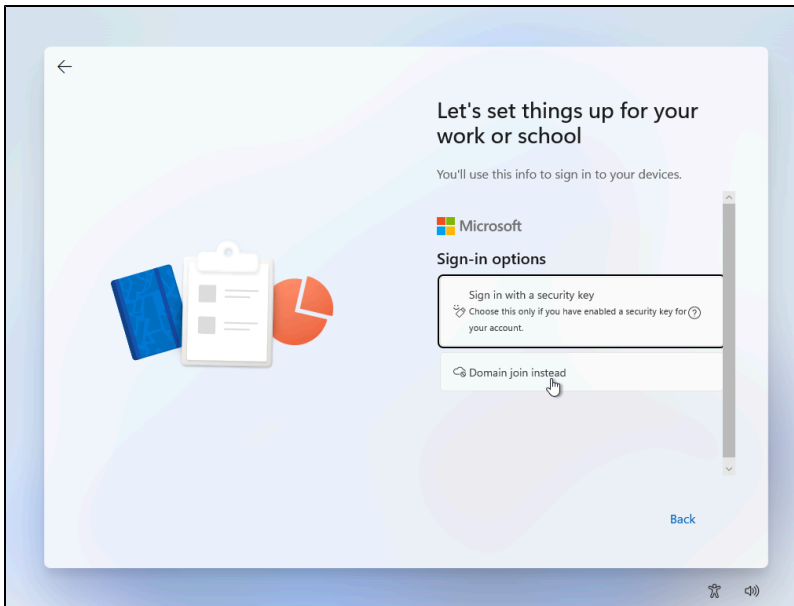
11. If you're connected via Ethernet, your network settings will automatically be detected. Otherwise you will need to select a wireless network and enter a password if necessary.



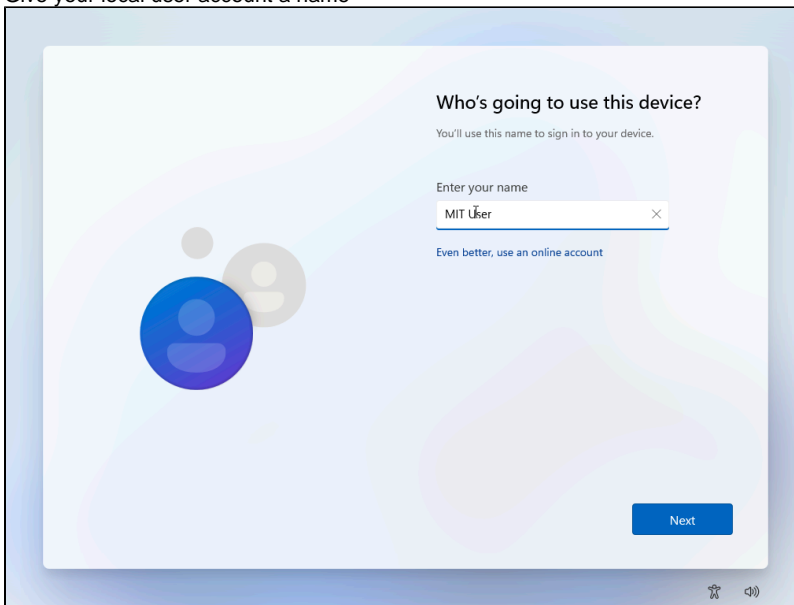
12. It's recommended to login using a **Microsoft Account**. But if you'd like to create a **local account**, you can choose **Sign-in options**.



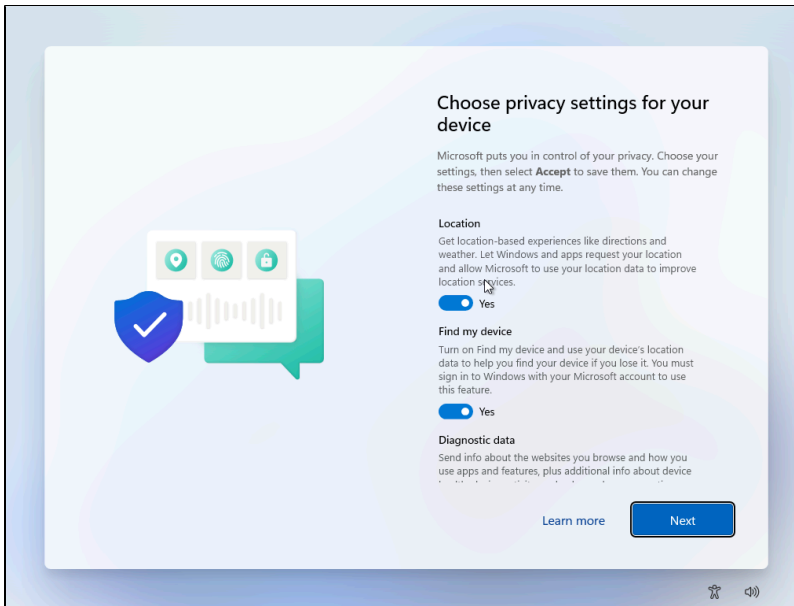
13. The click **Domain join** instead



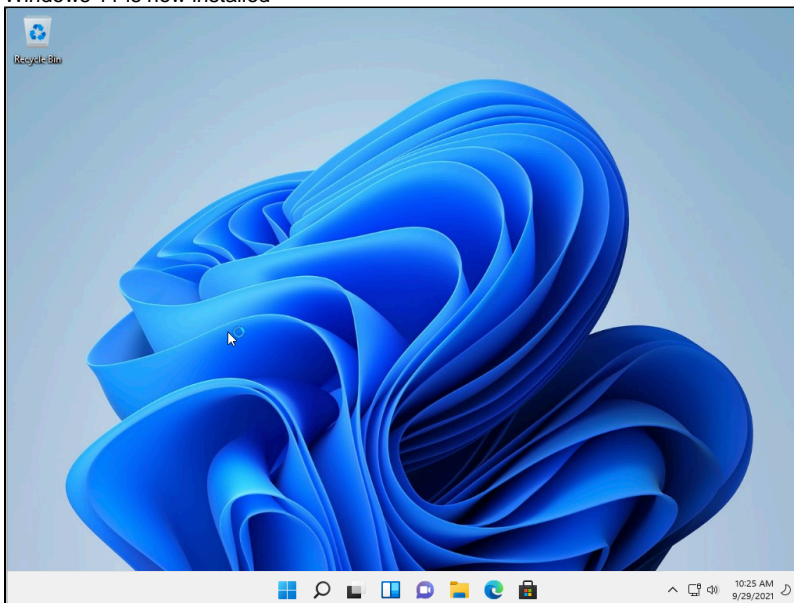
14. Give your local user account a name



15. Choose your ?privacy settings



16. Windows 11 is now installed



See Also

- [Windows 11 Landing Page](#)