

Accessing the Data Warehouse with FileMaker - Configuring ODBC for Windows

Accessing the Data Warehouse with FileMaker - Configuring ODBC for Windows

This page contains a subset of instructions on configuring FileMaker to access the Data Warehouse. For details on the overall process, see: [Accessing the Data Warehouse with FileMaker - Configuration Instructions](#)

Important: The ODBC connection is set up on the machine where the FileMaker database lives. If the database is hosted with FileMaker Server (strongly recommended), this is the server machine; if it's a local single-user file, this is the user's machine. These instructions are for Windows; instructions for Macintosh systems may be found at [Accessing the Data Warehouse with FileMaker - Configuring ODBC for Macintosh](#).

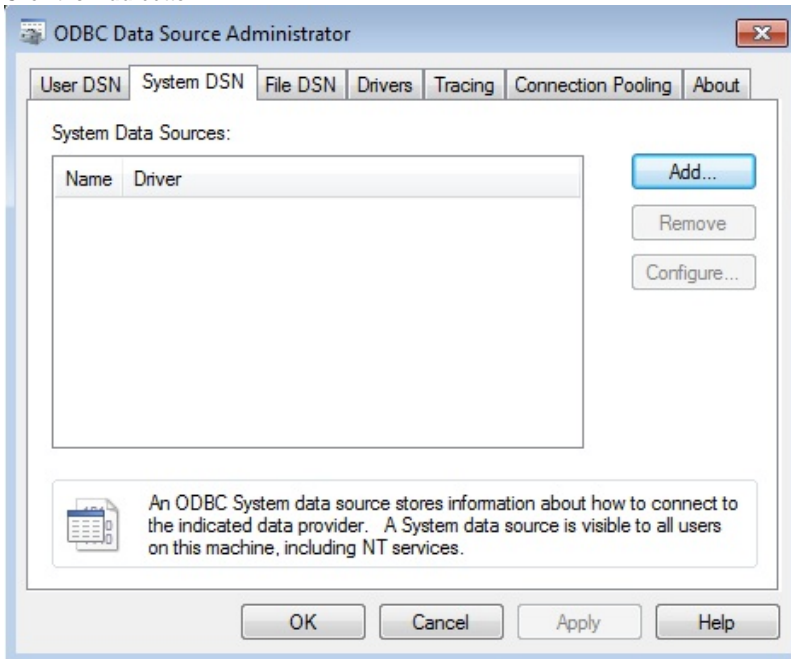
Install the Oracle Driver

Download and install the [Oracle 11gR2 Client for Windows](#).

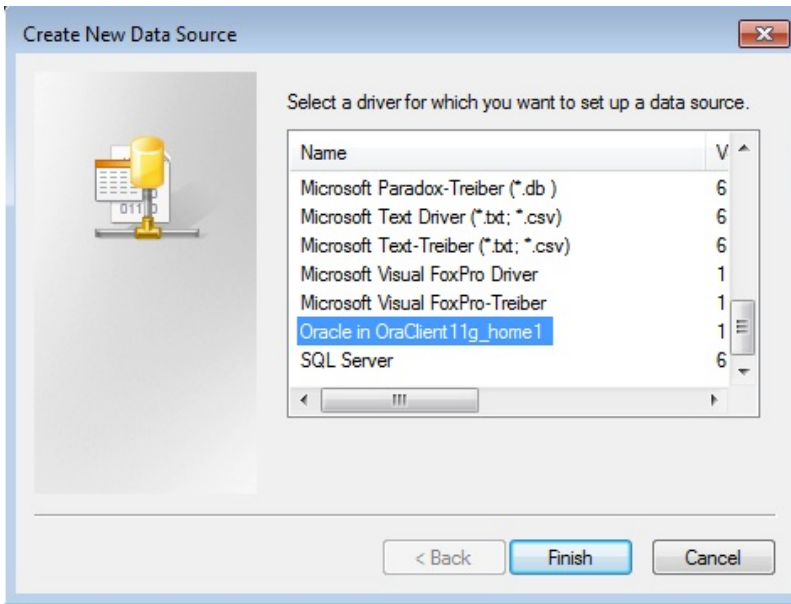
Note: Choose the 64-bit version of the Oracle Client. The only exception to this is if the FileMaker database will live on the client machine, and the user is running a 32-bit version of FileMaker Pro (only applies to versions 14 and earlier).

Set Up ODBC Data Source (DSN)

1. Go to **Control Panel > Administrative Tools > ODBC Data Sources (64-bit)**.
2. Click the **System DSN** tab.
3. Click the **Add** button.

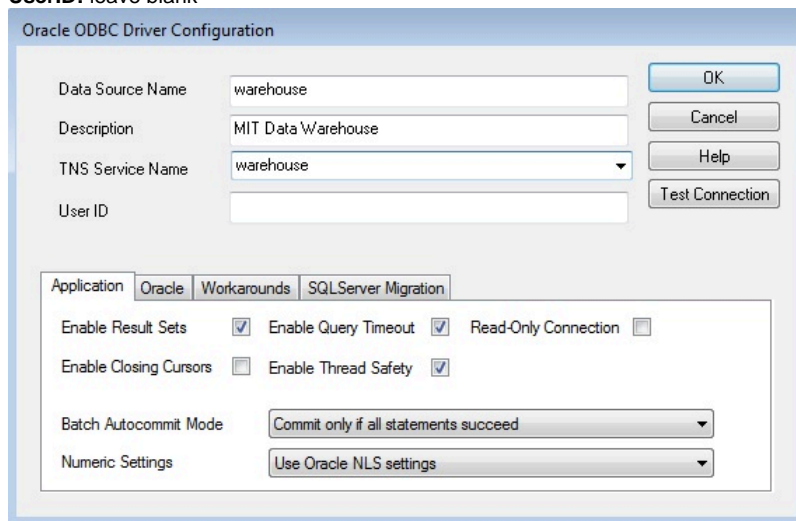


4. From the list of available drivers, select **Oracle in OraClient11g_home1** and click **Finish**.



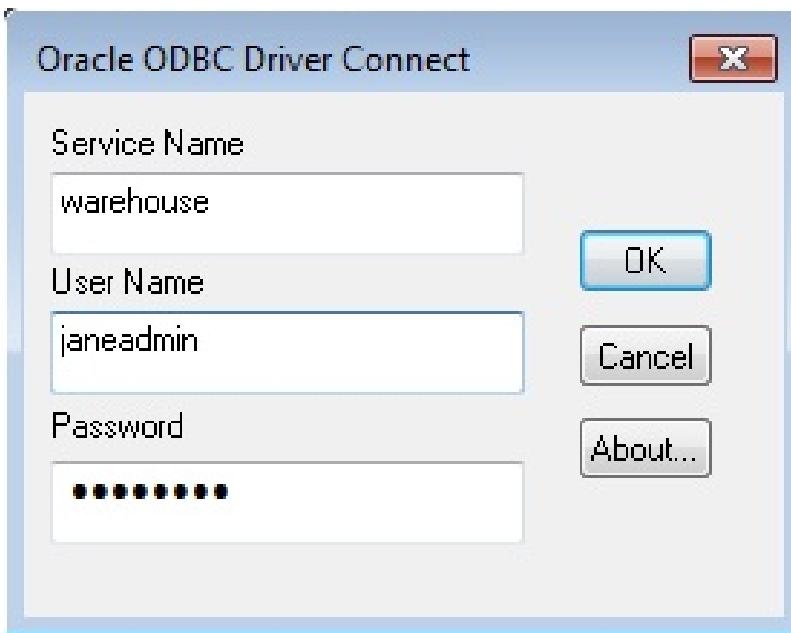
5. In the Oracle ODBC Driver Configuration window, fill in the following fields:

- **Data Source Name:** warehouse.
- **Description:** a short description of the data source (optional)
- **TNS Service Name:** warehouse
- **UserID:** leave blank



6. Click **Test Connection**.

7. Enter your Data Warehouse username and password and click **OK**.



Oracle ODBC Driver Connect

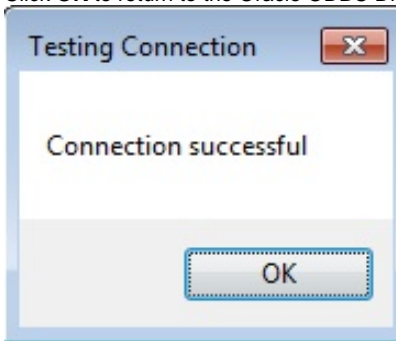
Service Name
warehouse

User Name
janeadmin

Password
●●●●●●●●

OK
Cancel
About...

The test results are displayed.
Click **OK** to return to the Oracle ODBC Driver Configuration screen.

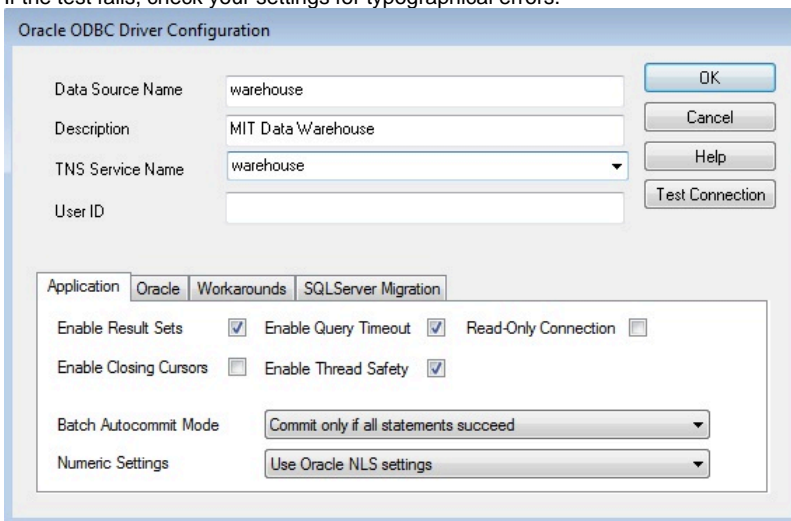


Testing Connection

Connection successful

OK

8. If the test fails, check your settings for typographical errors.



Oracle ODBC Driver Configuration

Data Source Name: warehouse

Description: MIT Data Warehouse

TNS Service Name: warehouse

User ID:

OK
Cancel
Help
Test Connection

Application: Oracle | Workarounds | SQLServer Migration

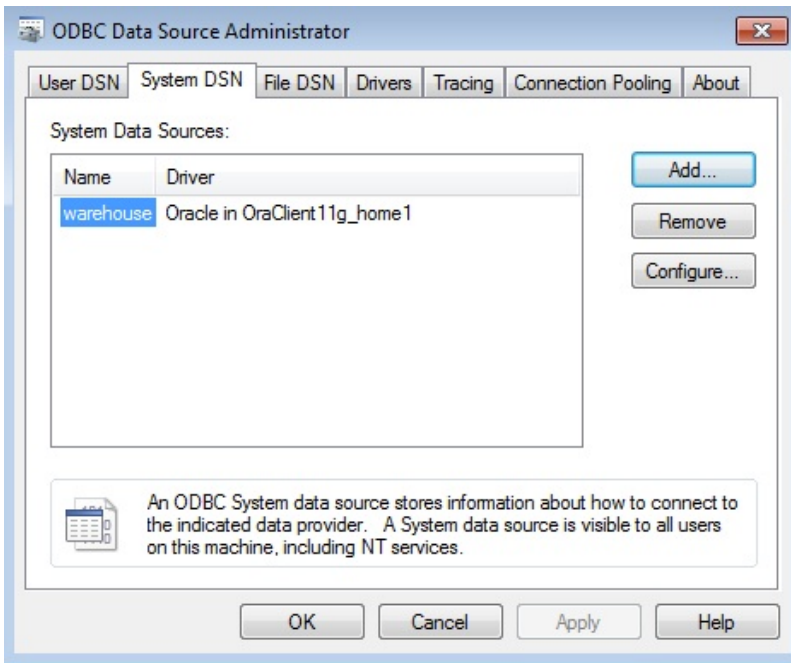
Enable Result Sets: ☒ Enable Query Timeout: ☒ Read-Only Connection: ☐

Enable Closing Cursors: ☐ Enable Thread Safety: ☒

Batch Autocommit Mode: Commit only if all statements succeed

Numeric Settings: Use Oracle NLS settings

9. Click **OK**.
10. The new connection appears in the list of System Data Sources.
Click **OK** to close the ODBC Data Source Administrator.



Configure FileMaker Database

Now we are ready to create a connection to the Data Warehouse in the FileMaker database. Return to [Accessing the Data Warehouse with FileMaker - Configuration Instructions](#) and proceed to Step C: Configure FileMaker ODBC Connectivity.