

# Installing LabVIEW

## Installing LabVIEW

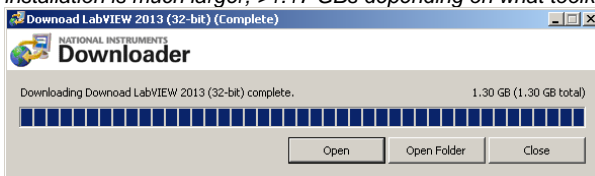
This installation documentation is a direct companion to [MIT's License of LabVIEW for Windows](#).

On this page:

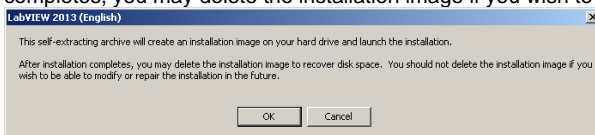
[Installation](#)  
[Activation](#)  
[See Also](#)

## Installation

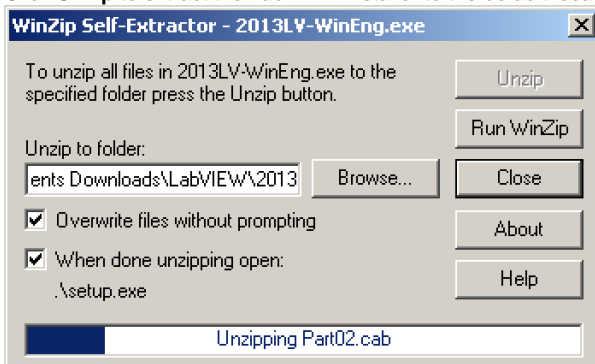
1. Download the evaluation copy of LabVIEW from the [National Instruments Academic Software website](#).
2. Double click the downloader to begin the installation. (*Please Note: The downloader application is very small, only 154 KB. The actual installation is much larger, >1.17 GBs depending on what toolkits you choose to install.*)



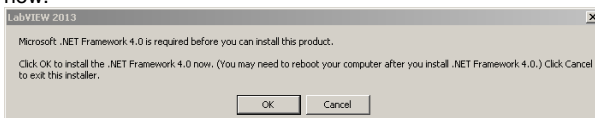
3. "The self-extracting archive will create an installation image on your hard drive and launch the installation. After the installation completes, you may delete the installation image if you wish to be able to modify or repair the installation in the future.



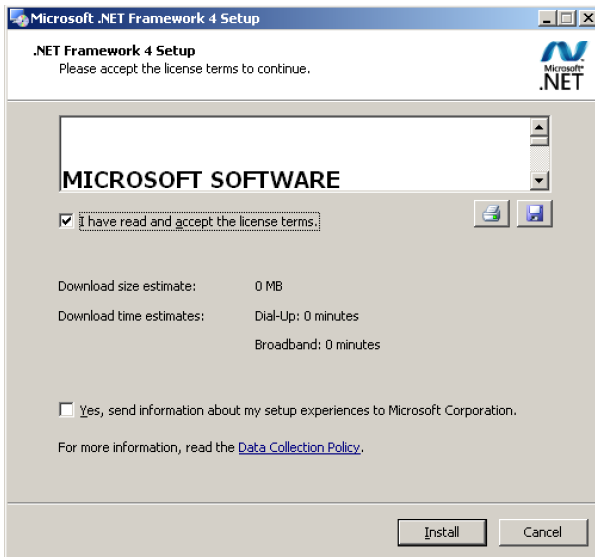
4. Click **Unzip** to extract the LabVIEW installer to the default location "C:\National Instruments Downloads\LabVIEW\2014"



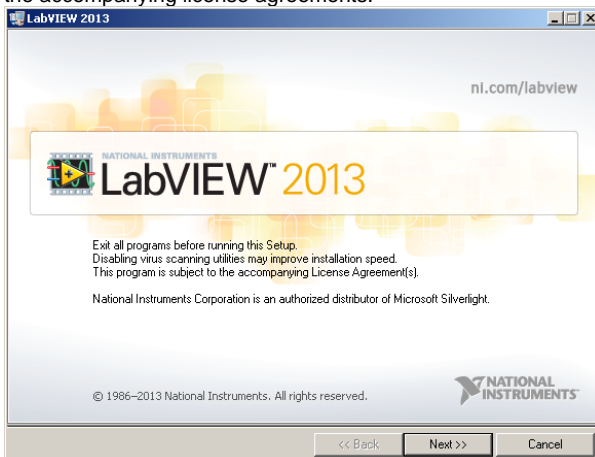
5. The Microsoft .NET Framework 4.0 is required before you can install this product. You may be asked to install the .NET Framework 4.0 now.



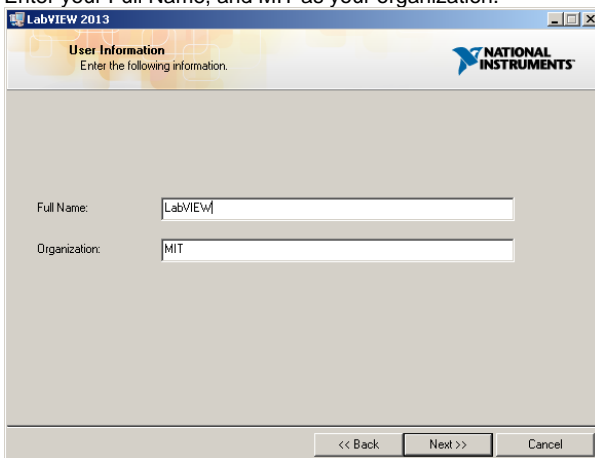
6. Accept the license terms and complete the .NET Framework 4.0 installation if required.



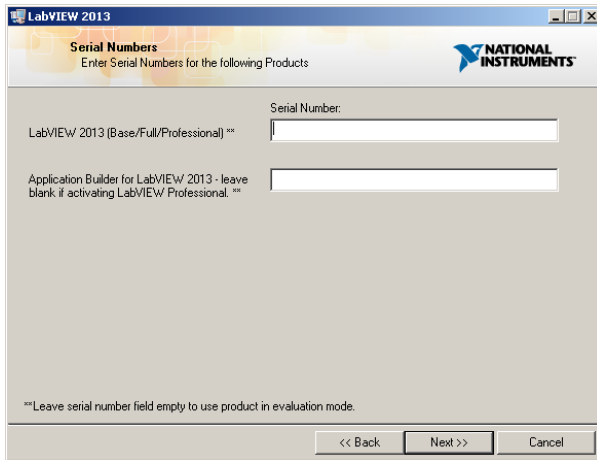
7. Exit all programs before running this Setup. Disabling virus scanning utilities may improve installation speed. This program is subject to the accompanying license agreements.



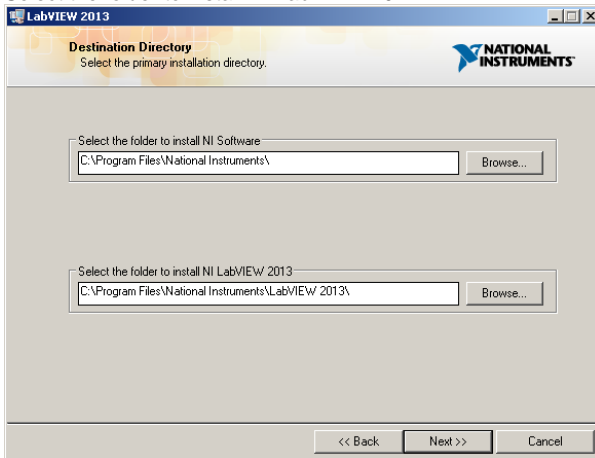
8. Enter your Full Name, and MIT as your organization.



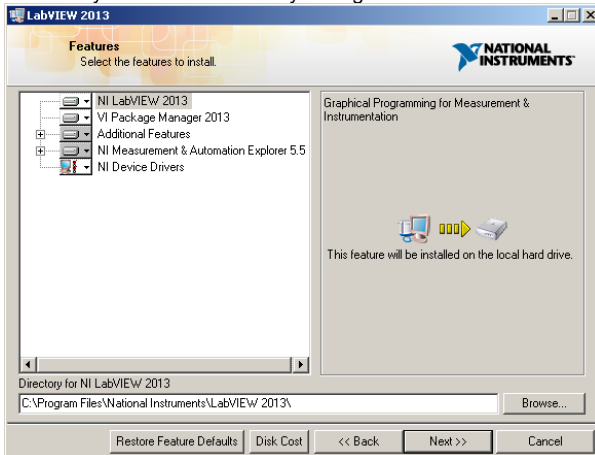
9. At this point you may enter the Serial Number listed through the appropriate link on IS&T's [LabVIEW](#) page (Faculty & Staff or Student).
  - a. (You may leave the Application Builder for LabVIEW 2014 field blank if activating MIT's License of LabVIEW Professional.)



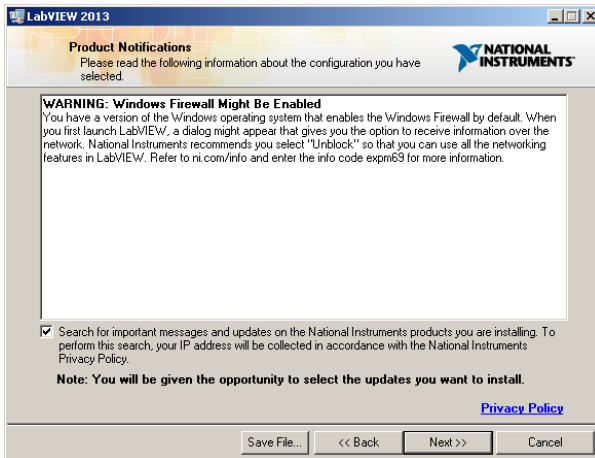
10. Select the folder to install NI LabVIEW 2014.



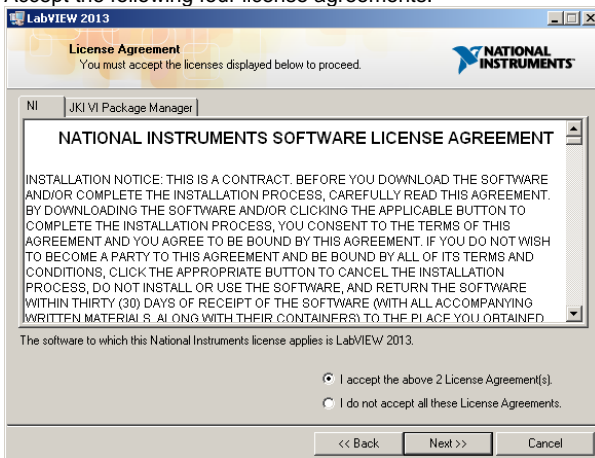
11. Select any additional features you might want to install.



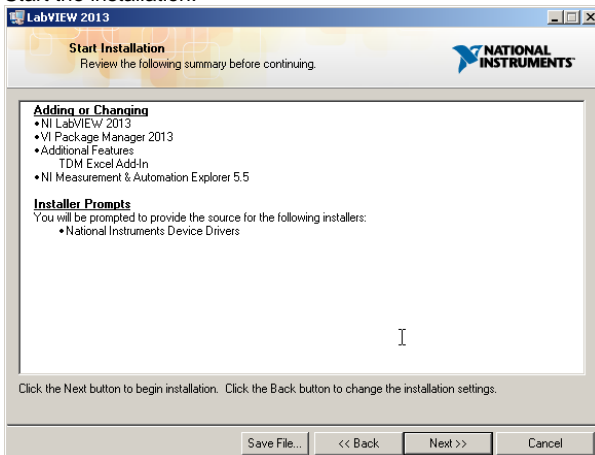
12. If you are installing LabVIEW on a version of Windows where the Windows Firewall is enabled, you may have to "Unblock" so that you can use all of networking features in LabVIEW. (During this step you also have the option to opt-out of future LabVIEW update notifications.)



13. Accept the following four license agreements.

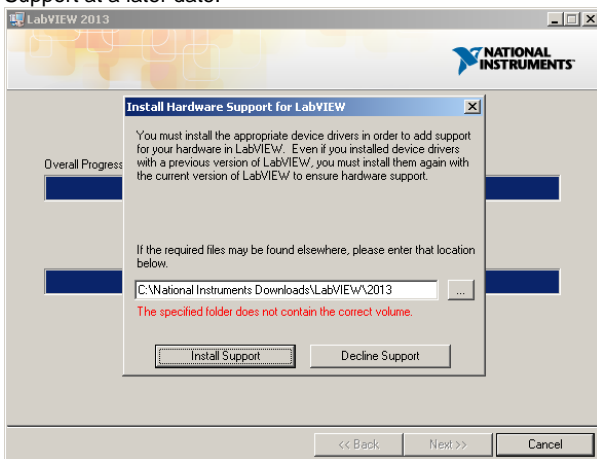


14. Start the installation.



15. During the installation you may be prompted to Install Hardware Support for LabVIEW. *You must install the appropriate device drivers in order to add support for you hardware in LabVIEW. Even if you installed device drivers with a previous version of LabVIEW, you must*

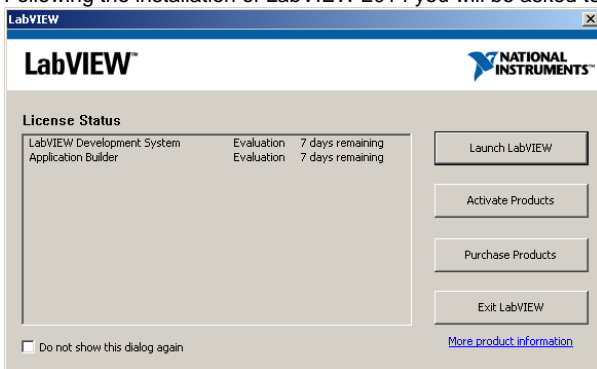
install them again with the current version of LabVIEW to ensure hardware support. Decline support is you plan on installing Hardware Support at a later date.



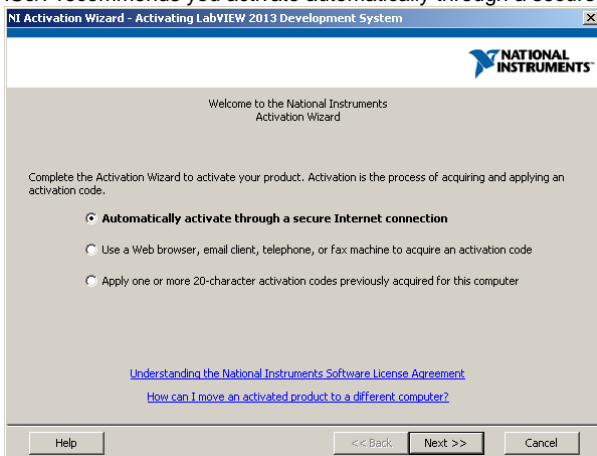
16. LabVIEW 2014 installation should now be complete.

## Activation

1. Following the installation of LabVIEW 2014 you will be asked to activate.



2. IS&T recommends you activate automatically through a secure internet connection.



3. Enter the provided Serial Number for the LabVIEW 2014 Application Builder, and the Development System.

**NI Activation Wizard**

NATIONAL INSTRUMENTS

Enter serial numbers for the products you want to activate. You can find serial numbers on your product's Certificate of Ownership or packaging.

Serial Number:  LabVIEW 2013 Application Builder

Serial Number:  LabVIEW 2013 Development System

Help << Back Next >> Cancel

4. A National Instruments User Profile is required to activate. If you do not have a National Instruments User Profile you can create one.

**NI Activation Wizard**

NATIONAL INSTRUMENTS

A National Instruments User Profile is required to activate your product. When you activate NI software using your User Profile, NI can better deliver benefits associated with software maintenance and support programs.

☒ Log in to your User Profile

Email:

Password:

[Forgot your password?](#)

☐ Create a new User Profile

[National Instruments Software Activation Privacy Statement](#)

Help << Back Next >> Cancel

5. Please note, almost all of the fields are required.

**NI Activation Wizard**

NATIONAL INSTRUMENTS

Create Your ni.com User Profile United States

**Attention:** Errors were found while processing your form. Please make the changes below.

Your Information

Email Address:  tim@mit.edu

Password:  ••••••••

Confirm Password:  ••••••••

First Name:  Tim

Last Name:  Beaver

Your Organization

Company Name:  MIT

Address:  77 Massachusetts Ave

Address 2:

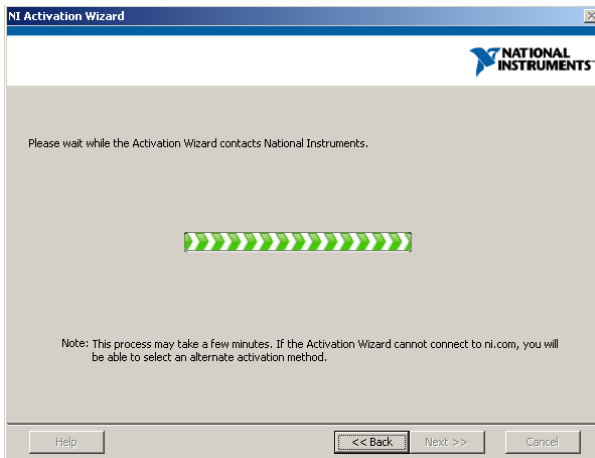
City:  Cambridge

State:  Please Select

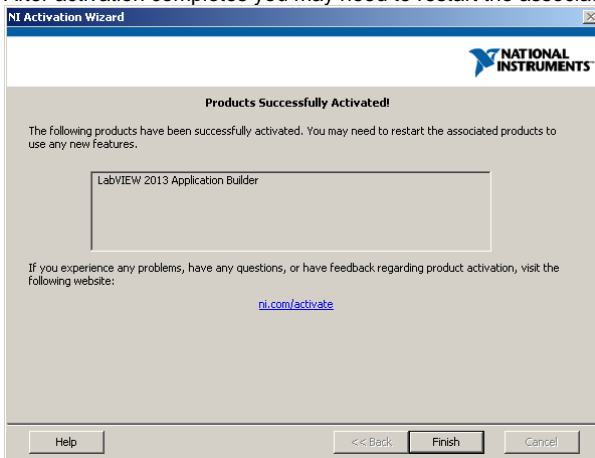
Postal Code:  02139

Help << Back Next >> Cancel

6. Please wait while the Activation Wizard contacts National Instruments.



7. After activation completes you may need to restart the associated products to use any new features.



## See Also

- [LabVIEW Landing Page](#)