

# How do I use Authorization Check Function SU53 in SAPgui

## How do I use Authorization Check Function SU53 in SAPgui

### SU53 Authorization Check

Transaction SU53: This transaction is an authorization check that may be needed for some SAPgui troubleshooting. When users are requesting SAP support, they may be asked to execute this transaction and send a screen shot.

**Note:** This is **not** the same as the authorizations list shown in [RolesWeb](#).

### Change Description

The first time a user opens this transaction, they will see authorization data in a new layout.

They should click the **Text View** or **Switch Layout** button to view the 'old' layout. This 'old' layout should be used when taking screen shots to send in emails requesting SAP support. Once the user switches to the 'old' layout, they won't need to take this step again.

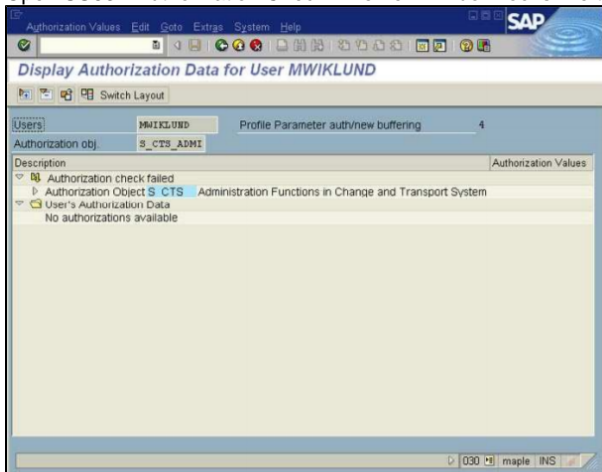
**Note:** a person using many SAP environments will need to switch the display in each environment.



The images used in these instructions and in the pdf document below are slightly out of date.

### Step 1

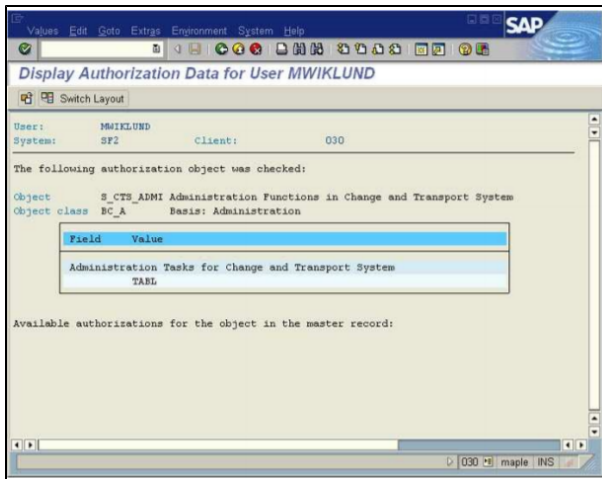
Open SU53 - Authorization Check. The new window looks like this:



The new window shows authorization data in an Expandable/Collapsible format; however, this format is not useful.

### Step 2

Click the **Text View** or **Switch Layout** button to display the view in a familiar layout.



This is the layout which should be used when taking screenshots required to diagnose an authorizations issue.

## See also

The original pdf containing these instructions can be found [here](#).