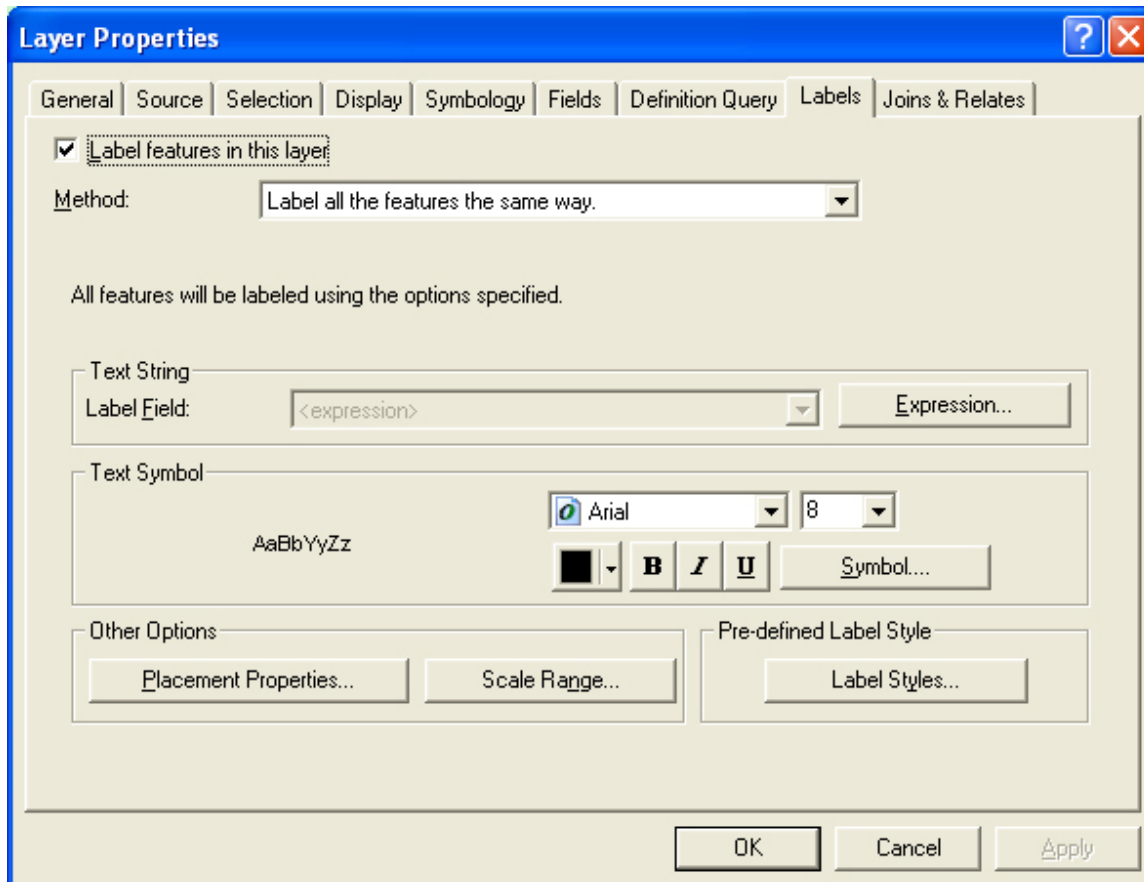


# How do I create more detailed labels in ArcGIS?

## Q: How do I create more detailed labels in ArcGIS?

### Answer

The labels tab in ArcMap will let you build "expressions" to set up more advanced labels, which can include things like labels from multiple fields in the attribute table.



**Label Expression** [?] [X]

Expression

Label Fields

Double-click to add a field into the expression

Show Type ▾

GROSS\_TAX  
 LOTSIZE  
 GROSS\_AREA  
 LIVING\_ARE  
**NUM\_FLOORS**  
 STRUCT\_CLA  
 R\_BLDG\_STY  
 R\_RNNF\_TYP

Append Show Values... ☒ Display coded value description

Expression

Write the expression in the language of the selected parser. ☐ Advanced

"Number of floors: " & [NUM\_FLOORS] & chr(13) & "Land Use: " & [LU]

Verify Reset Help Load... Save...

Parser: VBScript ▾

OK Cancel

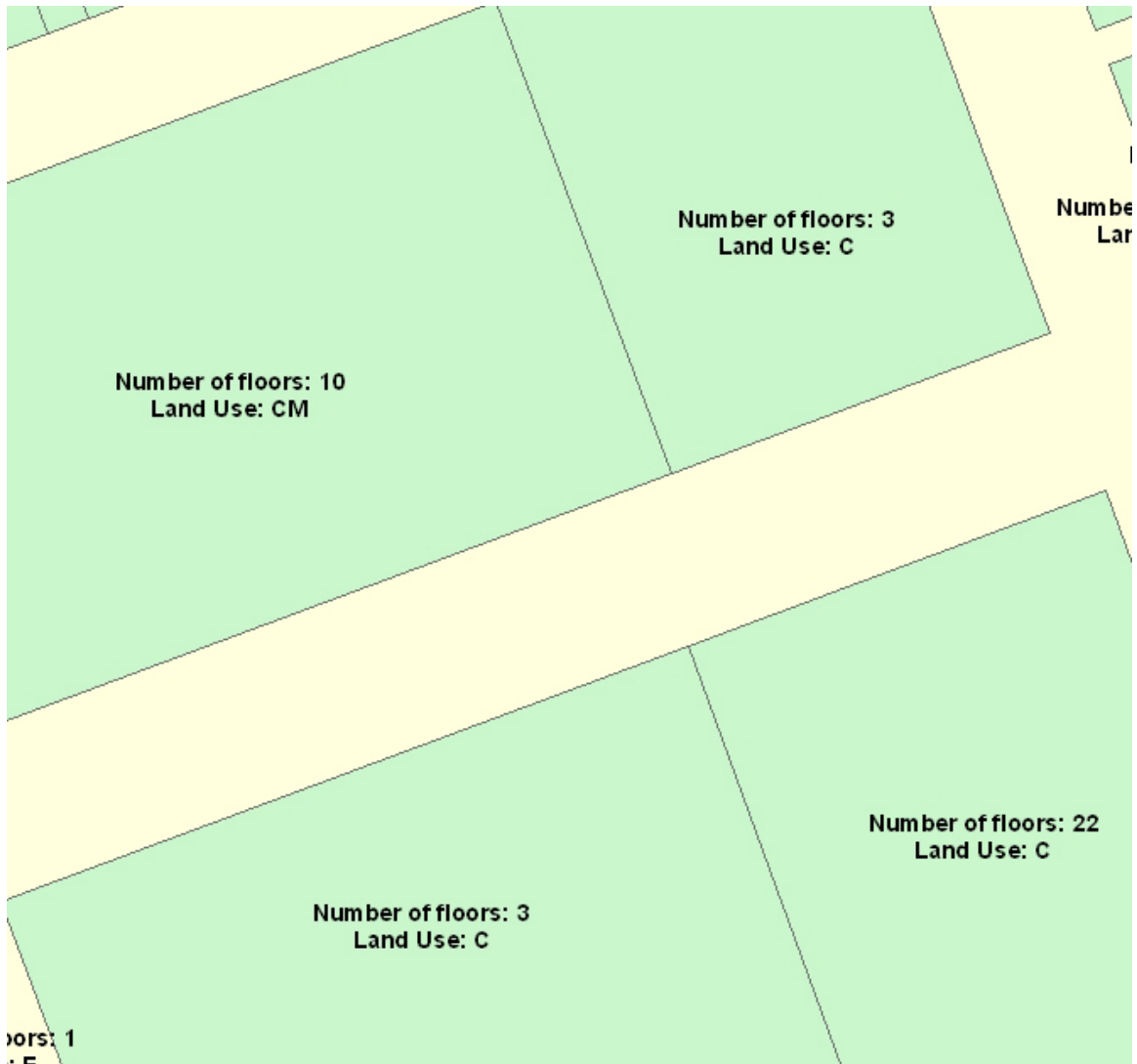
"Number of floors: " & NUM\_FLOORS & chr(13) & "Land Use: " & LU

\*Put any text inside quotes

\*Use & to separate label fields from each other and from values in quotes (concatenate)

\*chr(13) is the VBScript for a line break/carriage return

Example map using the expression from above with the "Boston, MA Land Parcels, 2007" file, available on the MIT Geodata Repository



## See Also

- [ArcGIS Landing Page](#)

Created by [MIT GIS Services](#). Email [gishelp\(at\)mit.edu](mailto:gishelp(at)mit.edu) for more assistance.