

# TSM 6 for Windows - First-Time Login

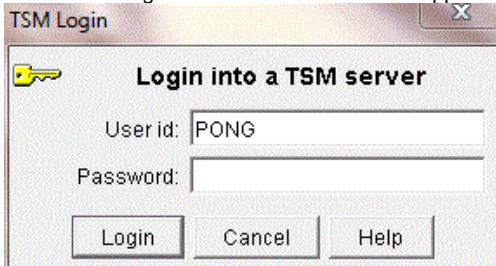
## TSM 6 for Windows - First-Time Login

### Logging In

You have to be an Administrator to run TSM. Here are the steps for the first-time login:

1. Open TSM from the **Start** menu: **All Programs > Tivoli Storage Manager > Backup Archive GUI**.

*Result:* The Login into a TSM server screen appears.



2. Enter your TSM password (you received this password in email when you registered for your TSM account) and click **Login**.

**Note:** If you are unable to enter a password successfully, you can [reset your password](#) automatically. If you still need help, you can contact the [Service Desk](#).

*Result:* The main TSM window, IBM Tivoli Storage Manager, appears providing the options: Backup, Restore, Archive, and Retrieve.



**Note:** The first time you log in, your password is automatically changed to a randomly-generated password and is stored encrypted on your computer. TSM uses this stored password for subsequent TSM sessions.

3. Quit TSM.
4. Log in again.

When you start up TSM this time and for all subsequent logins, you will not be prompted for the TSM password.

If you have to get your password reset (e.g., you moved to a new machine) you will have to do these steps again.

You are encouraged to [request](#) and set up [scheduled backups](#)