

# Data and Reporting Services - Using BrioQuery via Citrix Receiver on Mac OS X

## Data and Reporting Services - Using BrioQuery via Citrix Receiver on Mac OS X

On this page:

- Overview
- Before You Begin
- Using BrioQuery via Citrix
  - Download BrioQuery Templates
  - Launch BrioQuery via Citrix Receiver
  - Opening and Saving Files
    - Open a file
    - Save a file
  - Keyboard Shortcuts
  - Context-sensitive Menus
- Related Links

### Overview

BrioQuery does not have a desktop version for Mac OS X machines. Citrix is server solution that allows Macintosh users to MIT's enterprise applications, such as BrioQuery.

### Before You Begin

- Download [Citrix Receiver for Macintosh](#).
- Instructions are available for [Citrix Workspace for Macintosh Installation and First Launch](#).

**Note:** To use Citrix, your Kerberos password cannot be more than three years old. If your password exceeds this age limit, you need to [change your Kerberos password](#)

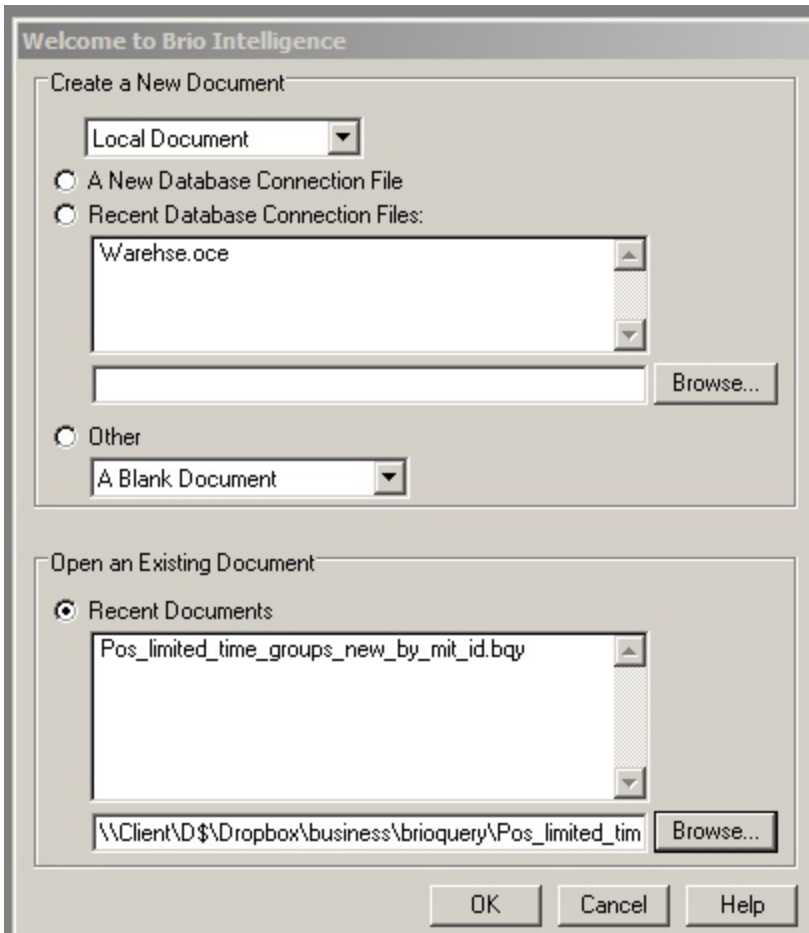
### Using BrioQuery via Citrix

#### Download BrioQuery Templates

- A catalog of BrioQuery reports is available from <http://ist.mit.edu/warehouse-reports>.
- Choose to save the needed reports on your local machine. For example, you may wish to create a folder named Brio Reports on your Desktop.

#### Launch BrioQuery via Citrix Receiver

- After installing Citrix Receiver, proceed to <https://citrixapps.mit.edu>
- Click the BrioQuery icon.  
*Result:* Welcome to BrioQuery Intelligence window opens.



- Select the **lower** Browse button.
- Follow the instructions below to navigate to a saved .bqy file on your Macintosh.

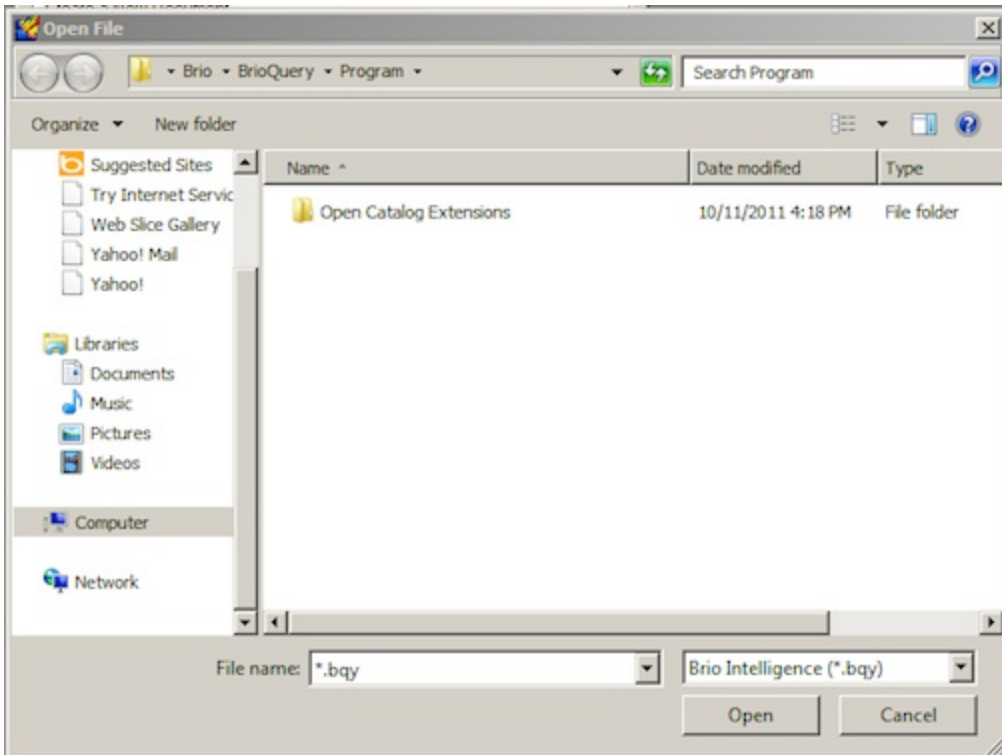
## Opening and Saving Files

When you access applications via Citrix, you are working on a Windows server. "My Computer" refers to the server. When you expand "My Computer", you can see your local computer.

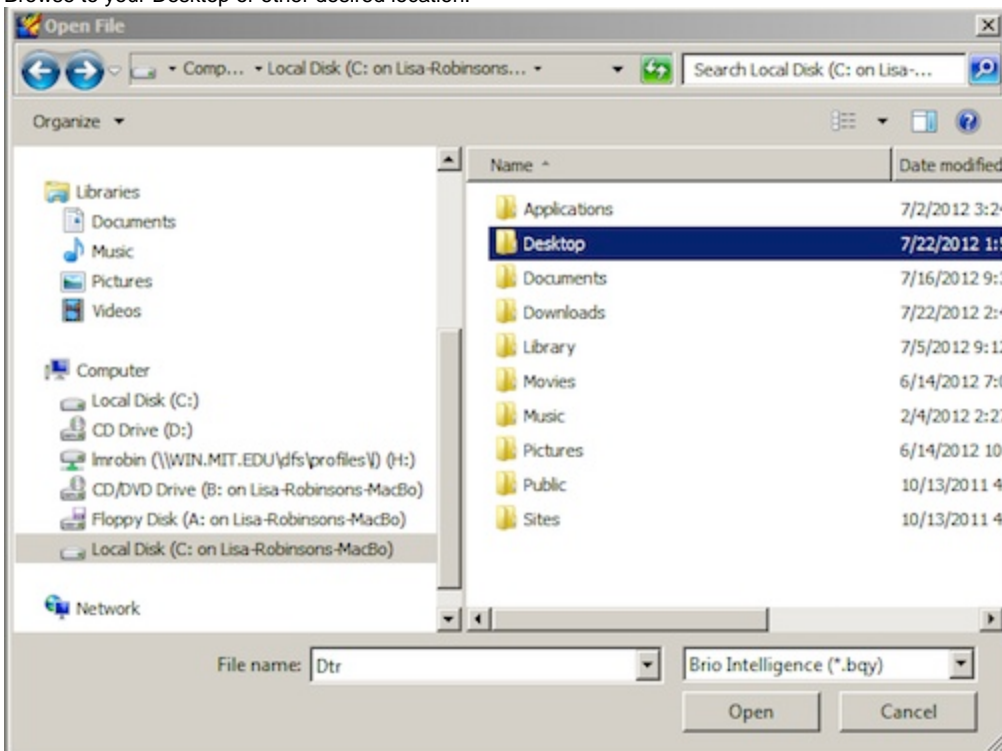
### Open a file

After choosing **File > Open**, use the steps below to navigate to a file stored on your local computer.

1. In the left navigation pane, click the plus sign to expand My Computer.



2. Choose Local Disc C: which contains **your name**. This is often the **last entry in the list**.
3. Browse to your Desktop or other desired location.



## Save a file

1. Click to expand the **Save in** menu.  
Unable to render embedded object: File (save 1.jpg) not found.
2. Select Local Disc C: with your name displayed.

Unable to render embedded object: File (save 2.jpg) not found.

3. Browse to the Desktop or other desired location.  
Unable to render embedded object: File (save 3.jpg) not found.

## Keyboard Shortcuts

- Since you're running BrioQuery for Windows, make sure you use the BrioQuery (Windows) keyboard shortcuts rather than the BrioQuery (Macintosh) shortcuts. For example, to open a file, press Control+O

## Context-sensitive Menus

To access the BrioQuery context-sensitive menus, place your pointer on the item, then press option-click.

## Related Links

- [Data and Reporting Services](#)
- [Citrix Receiver](#)
- [Citrix Workspace for Macintosh Installation and First Launch](#)