

# Windows 10 - Clean Installation

## Windows 10 - Clean Installation

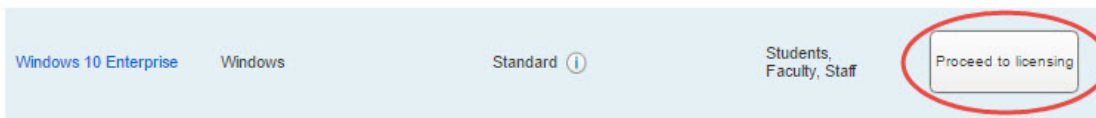


These instructions will install a fresh, new copy of Windows 10 on a new or current system, **without preserving user data or applications**. If you are installing on a current machine, be sure to **backup files you wish to retain**.

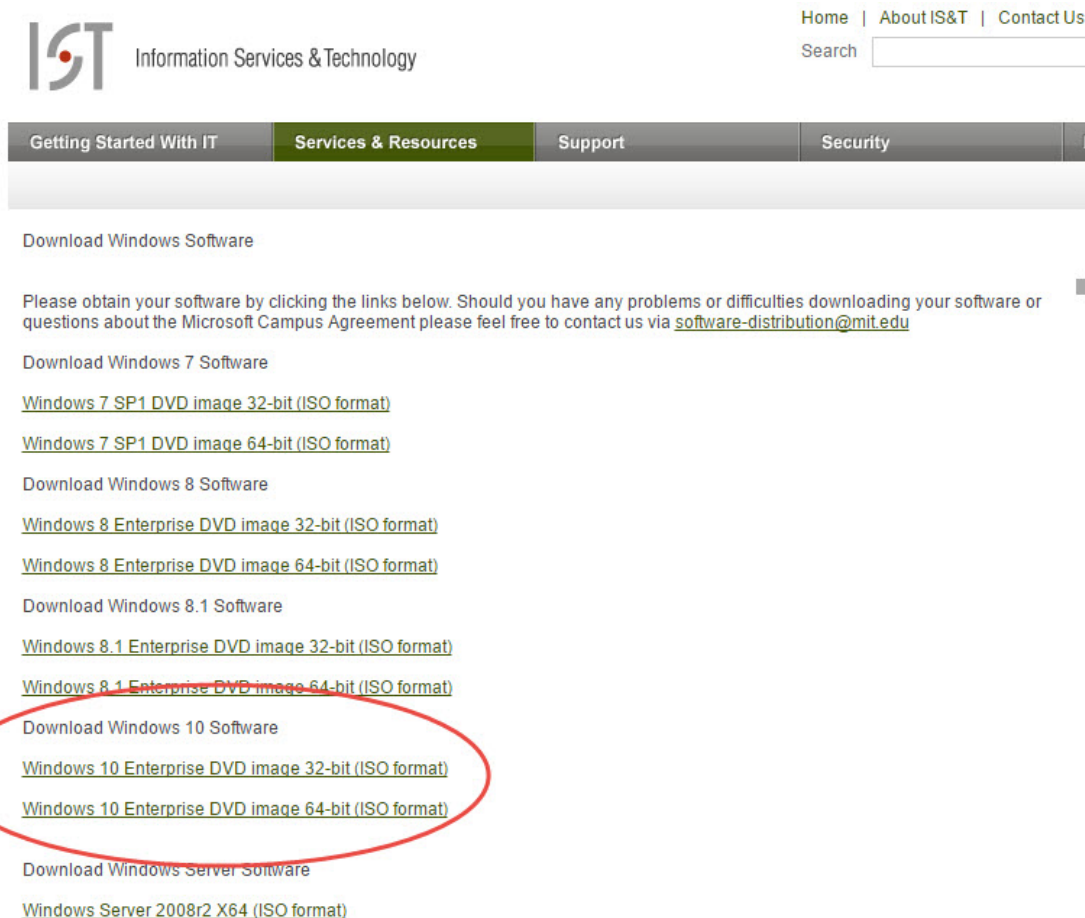
## Preparing Windows 10 Install Media

You will need to download the Windows 10 install file and then create a bootable DVD or flash drive.

1. Visit the [IS&T Software Grid](#) and locate Windows 10. Then click **Proceed to licensing**.



2. Read then click **proceed to license agreement**
3. Read then click **I agree to and accept the terms above**  
*Result: The Download Windows Software page opens.*



4. Click to download **Windows 10 Enterprise DVD image 32-bit or, 64-bit (ISO format)**



It is highly recommend that you install the 64-bit version of Windows 10 unless you have a specific use case for 32-bit Windows. The majority of modern computers will support 64-bit Windows.

5. Create a bootable DVD or USB Drive with Windows 10.

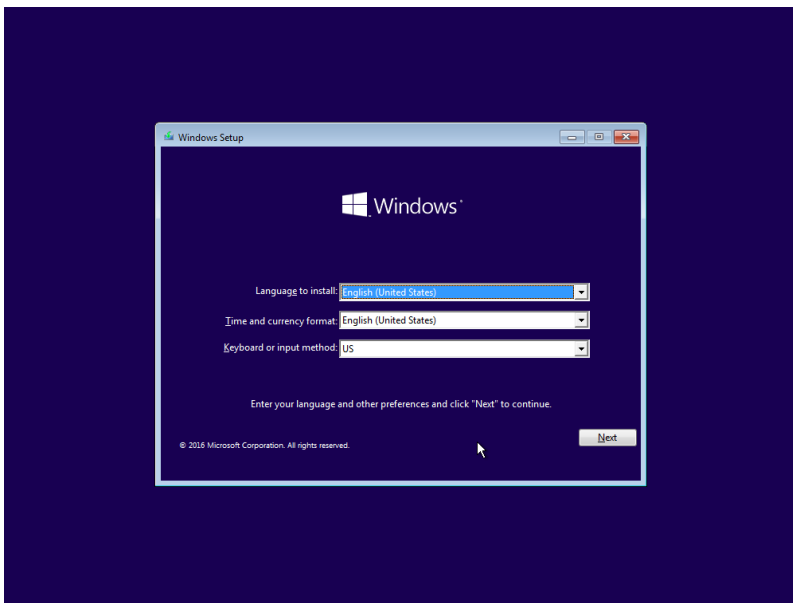
For instruction on how to create a bootable DVD or USB drive for installing Windows see the article [Install Windows from a USB Flash Drive](#).

## Doing a Clean Installation of Windows 10

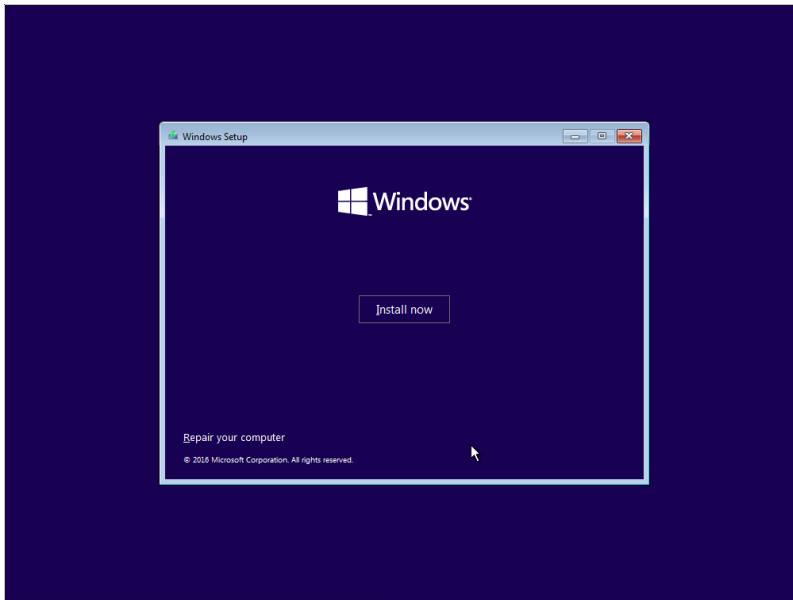
1. Insert the Windows 10 install media (DVD or flash drive). Restart your computer **while holding the F12 function key**.  
*Result:* You will see a list of Boot Options.

#. Using the arrow keys select either **CD/DVD/CD-RW Drive** or, **USB Storage device**. Then press the **Enter** key.  
*Result:* The media will boot into the language confirmation page.

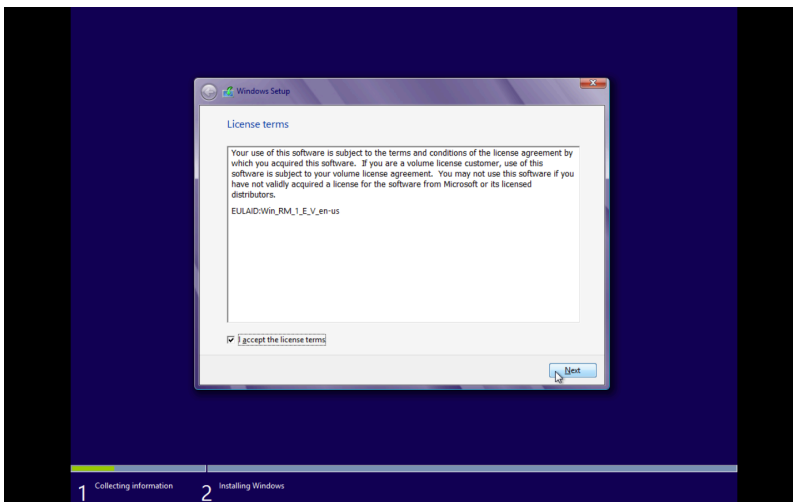
2. Confirm your language preferences and click **Next**.



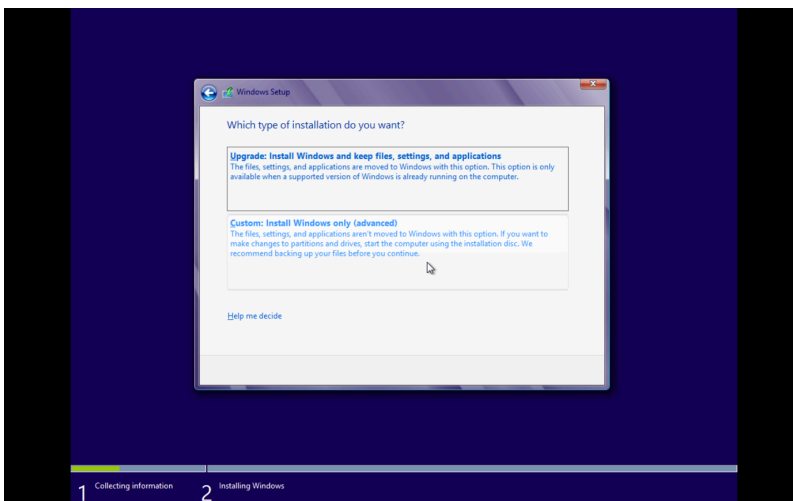
3. Click **Install Now**.



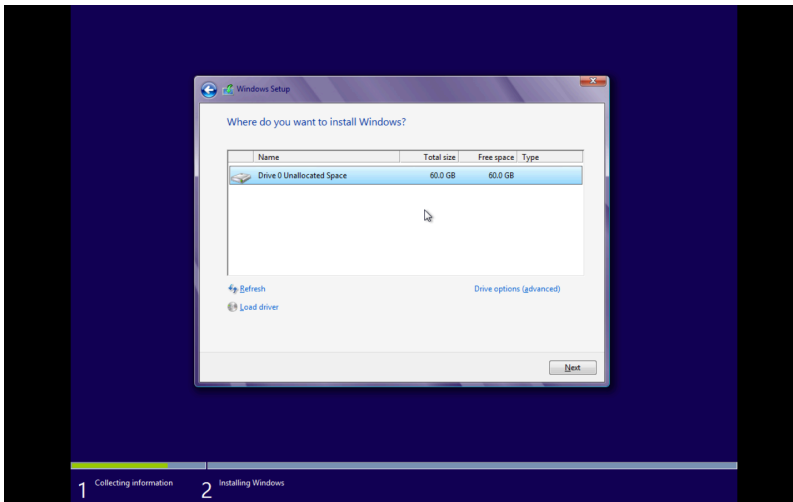
4. Click **Accept License Terms** and then click **Next**.



5. Click **Custom: Install Windows Only (Advanced)**.

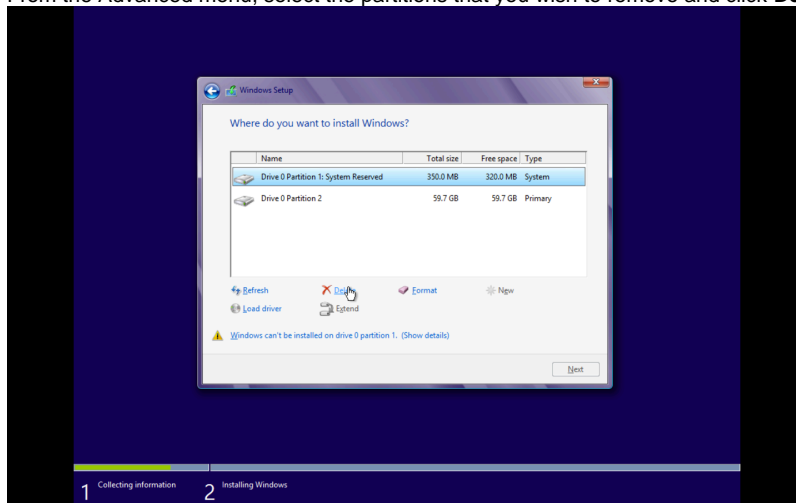


6. Select the hard drive onto which you would like to install Windows 10.

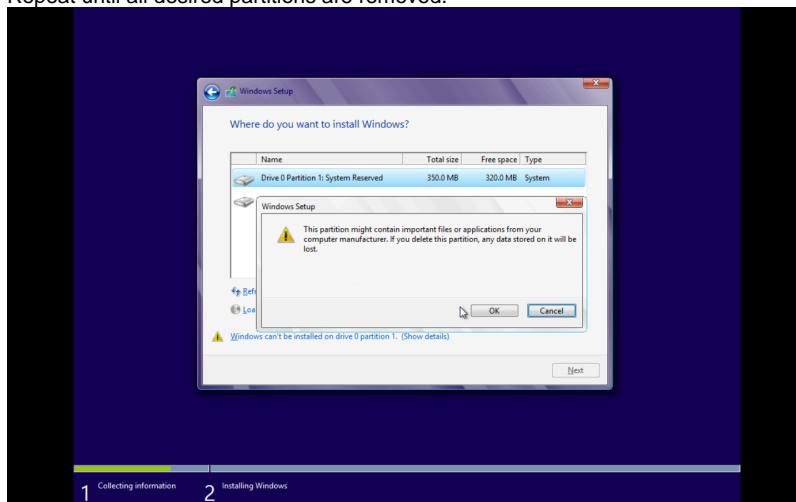


**i** If you wish to wipe the hard drive before installing Windows 10, click **Drive Options: (Advanced)** and follow the following instructions, otherwise skip to step 6:

- a. From the Advanced menu, select the partitions that you wish to remove and click **Delete**, and **OK** to confirm.

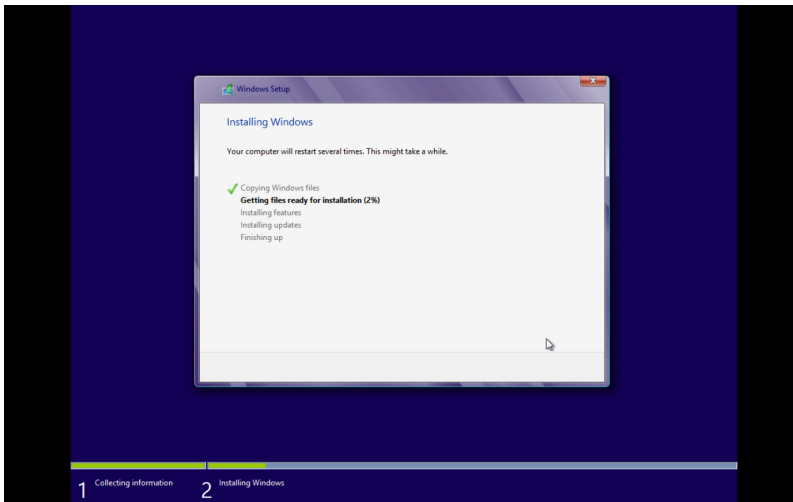


- b. Repeat until all desired partitions are removed.

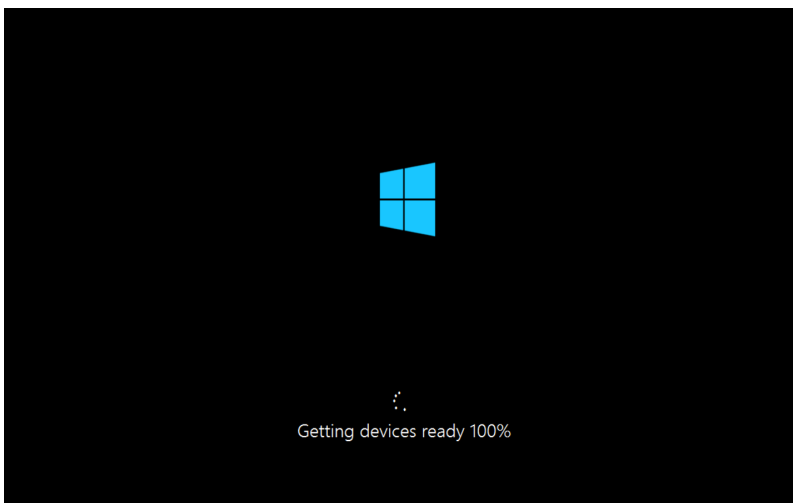


- c. When a single "Unallocated Space" remains, then click **Next**.

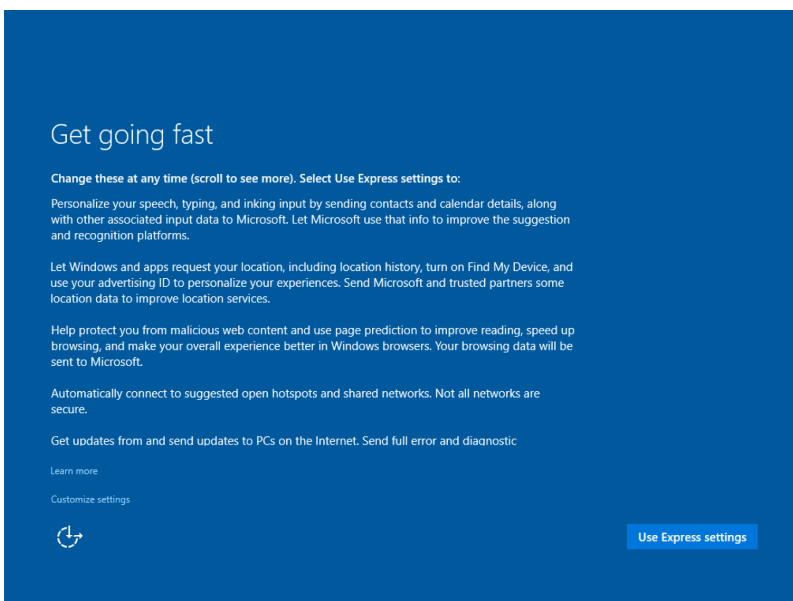
7. Click **Next** and Windows will begin its installation. This might take a few minutes. Additional restarts may occur.



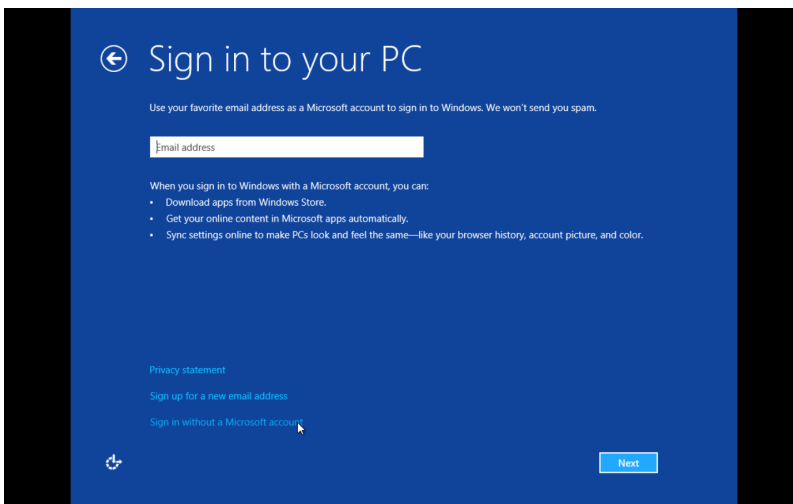
8. Once installation of the operating system is complete, you will need to configure the system for first time use.



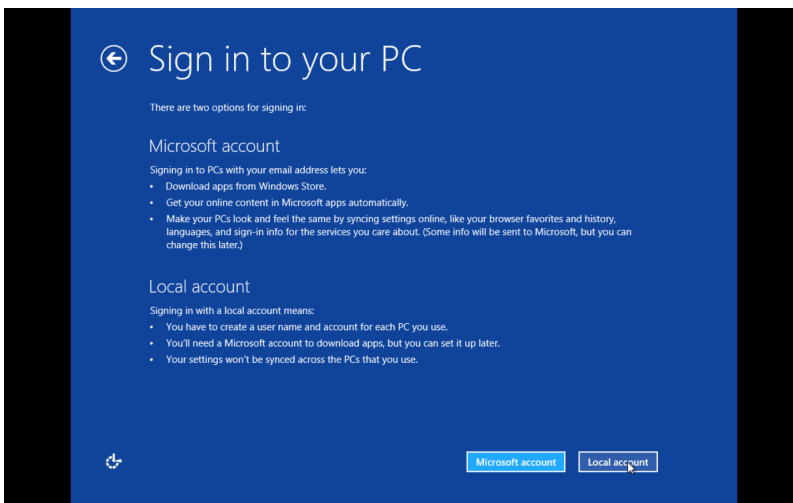
9. In the next screen, select **Use Express Settings** to accept Microsoft's settings or **Customize settings** to make individual choices about what Microsoft can access.



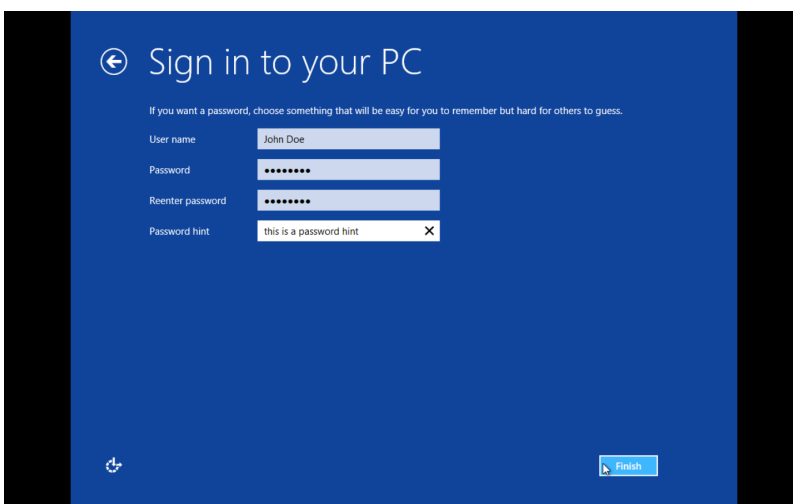
10. In the "Sign in to your PC" screen, click **Sign in without a Microsoft Account**.



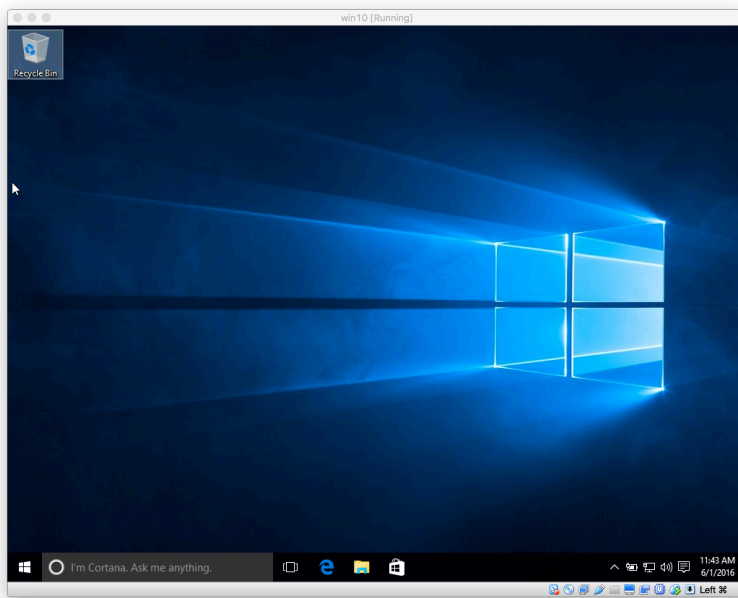
11. Click on **Local Account**.



12. Create your local account. By default this account will have Administrator rights. Click **Finish**.



13. Windows 10 is now installed.



## See Also

- [Windows 10 Landing Page](#)