

Mac OS X 10.8 and later - Set Up LPD Printing

Mac OS X 10.8 and later - Set Up LPD Printing



Redirection Notice

This page should redirect to [jstcontrib:Mac OS X 10.9 and later - Set Up LPD Printing].

On this page:

[Printing Options](#)
[Get Printer Information](#)
[Set up LPD](#)

Printing Options

This document describes how to set up LPD printing under Mac OS X 10.8 and later, so that you can print to printers within your own building and to printers connected to MITnet at other campus locations. These instructions assume the [printer has been set up on MITnet](#). (The screenshots below show windows and dialog boxes from OS X 10.8; corresponding windows up to macOS Sierra will display the same information.)

LPD/IP printing is the recommended method for printers on MITnet.

Get Printer Information

Before setting up LPD printing as described below, you first need to determine the hostname of the printer and two related settings for the printer and its companion print server name. For instructions on how to do this, see: [Mac OS X: Print Server Information](#)

Printer Drivers/Software:

Mac OS X includes printer drivers/software and PostScript Printer Description (PPD) files for many printers; see the following Apple Support pages:

[Mac OS X 10.9 or later: Printer and scanner software](#)

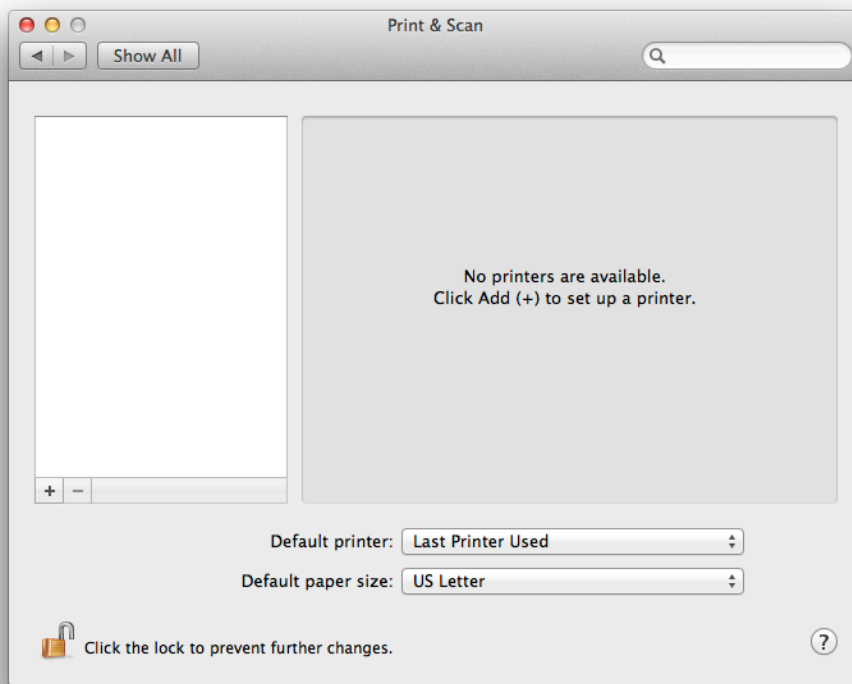
If your printer model does not appear in the list on the Apple Support page, or when installing the printer, you will need to install the correct printer driver/software from the CD that shipped with the printer, or download the driver from the manufacturer's website.

Set up LPD

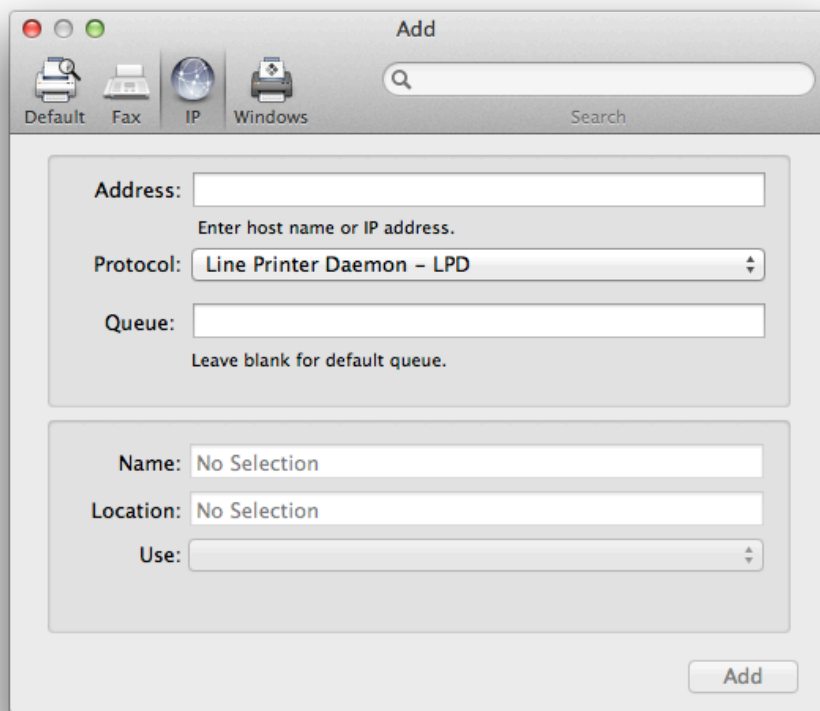
Note: Screen shots are from OS X 10.8.

1. Under the **Apple** menu, open **System Preferences** and click **Printers & Scanners**.

Note: If the padlock in the lower-left corner is closed, click it and enter the Macintosh administrator name and password.

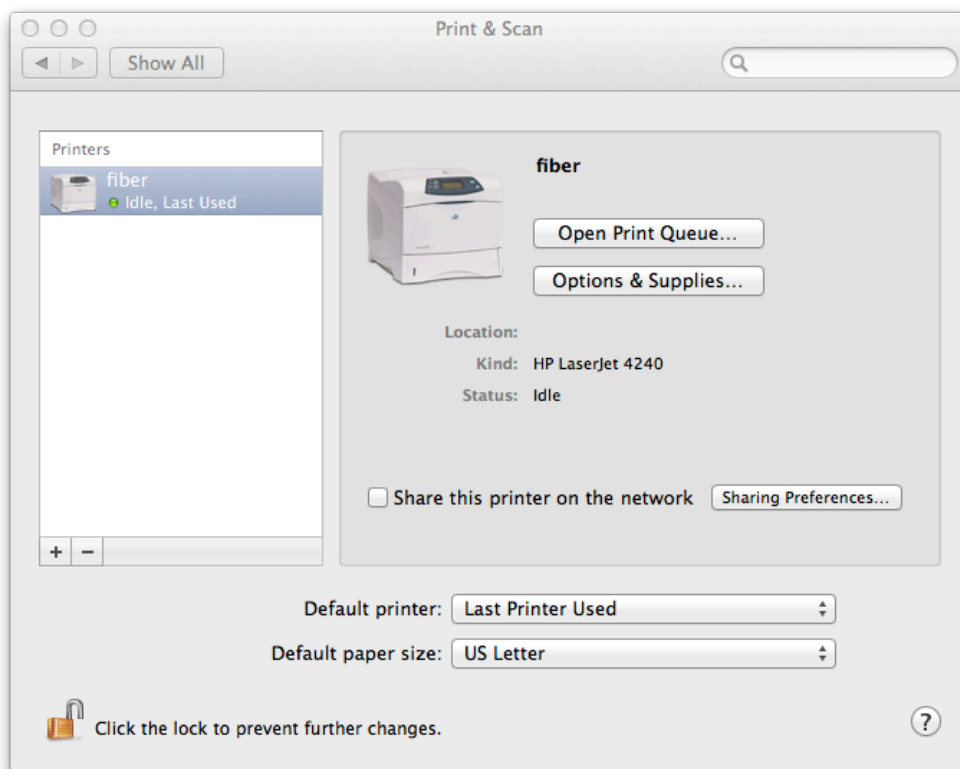


2. To add a printer, click the + (plus) sign.
Result: The Add Printer setup window opens.



3. If not already selected, click the **IP** tab at the top.

4. In the **Address** field, enter the IP address of the printer.
5. In the **Protocol** field, if not selected by default, select **Line Printer Daemon - LPD** from the drop-down menu.
6. The **Queue** field can be left blank unless printing to
7. In the **Name** field, give the printer a friendly name you will recognize.
8. In the **Location** field, enter the room number for the ?printer.
9. Under "use" the printer driver should have been automatically selected. If not you may use a generic PostScript or PCL printer driver or select "Other" to browse to a downloaded driver.
10. Click Add once the above fields are filled in.



- 11.
12. You may add other printers by clicking the + (plus) sign in the *Print & Scan* window, or quit System Preferences.