

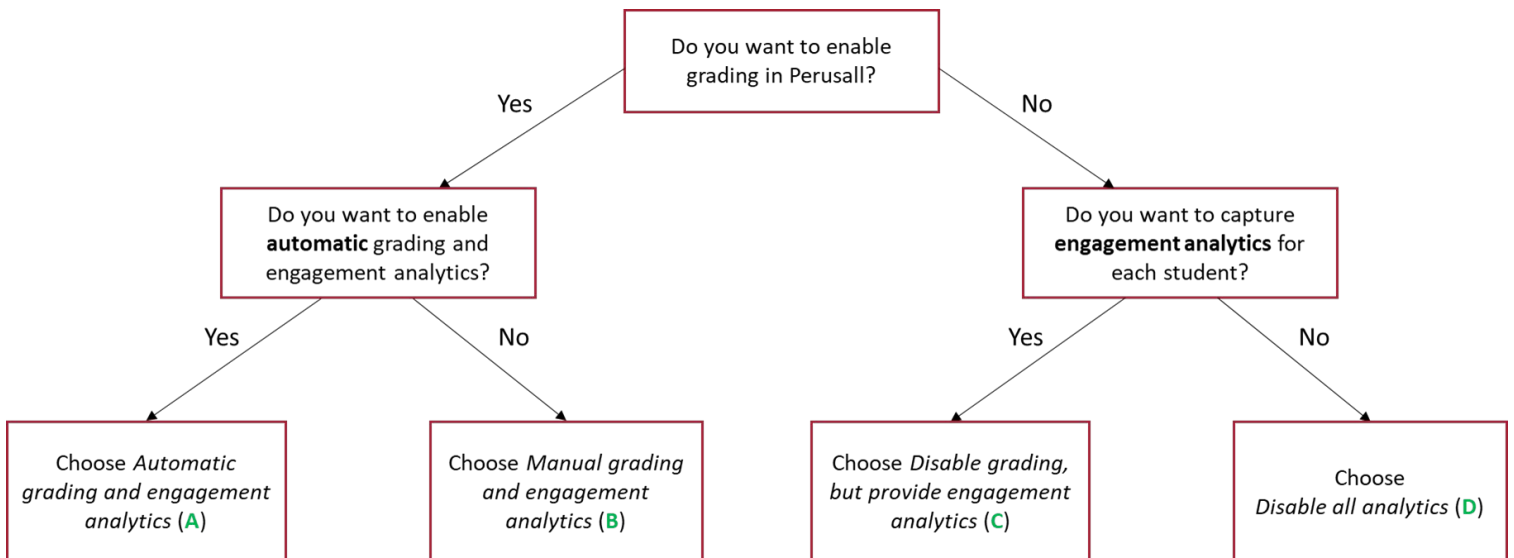
## Perusall: Grading & Analytics Options

### What are my options for configuring grading in Perusall?

Perusall is a social annotation platform that encourages active and collaborative learning. With this comes the key feature of a machine learning-driven grading algorithm that automatically scores students' annotations.

Previously, Perusall automatically graded annotations no matter what, and the instructor would then choose how to take action with these automatic grades. **As of summer 2022, an instructor can now choose to turn off grading completely. Instructors also have more options for selecting the level of grading and analytics they want based on their needs/goals for the course. If an instructor chooses to keep automatic grading turned on, there are also now several presets available to quickly choose scoring settings.**

The options for grading and analytics are outlined below. You can find them by going to **Settings > General** in Perusall. Remember to click **'Save changes'** at the bottom of this page after adjusting any settings.



**Scoring and analytics \***

Automatic grading and engagement analytics

- A** Automatic grading and engagement analytics  
Perusall will provide data about student engagement for your review, and assignments will be graded automatically. You can always override automatically-assigned grades and decide when they are displayed to students.
- B** Manual grading and engagement analytics  
Perusall will provide data about student engagement for your review. Assignments will not be graded automatically, but you can review student engagement data and manually assign scores to students' assignment submissions.
- C** Disable grading, but provide engagement analytics  
Perusall will provide data about student engagement for your review. All assignments will be ungraded and the gradebook will be disabled.
- D** Disable all analytics  
Perusall will not provide data about student engagement. All assignments will be ungraded and the gradebook will be disabled.

Watch the **"How Scoring Works"** video [here](#) to learn more about setting up Perusall to match your preferences.

Note that “**engagement analytics**” in Perusall means statistics about each individual student’s engagement with a particular assignment, such as:

- Where students spent the most time
- Where students had the most questions
- When students were working on assignments

You can read more about engagement analytics and how to access them [here](#).

➔ If you choose **Automatic grading (A)** or **Manual grading (B)**:

Next, go to **Settings > Scoring > General** to choose how you want to release scores to students. You can also set an *Assignment score range* and *Threshold score for credit* in this section.

➔ If you choose **Automatic grading (A)**:

Under **Settings > Scoring > Automatic scoring**, you can choose a preset scoring setting and adjust the metrics of student engagement to generate a single score. Read more about scoring [here](#) (this resource is also linked in the Automatic scoring section when you’re on the page).

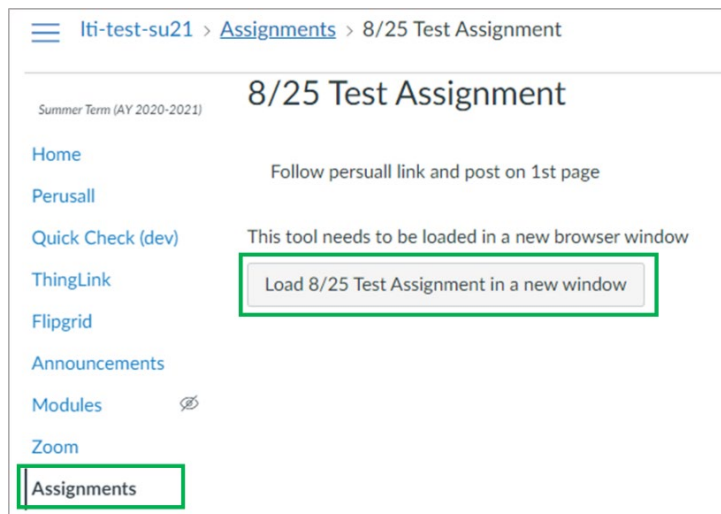
### What are my options for syncing grades back to Canvas?

If you choose to have grading enabled in Perusall – either automatic or manual – you then have options for how you want grades to sync back to Canvas. This is under **Settings > Scoring > LMS grade sync**. The options are:

- **Automatically sync individual assignment scores back to the LMS**
  - *Note:* This is the default setting. Make sure you update this if you do not want automatic grade sync!
- **Automatically sync students' average scores back to the LMS**
- **Manually sync individual assignment scores back to the LMS**
- **Do not sync grades back to the LMS**
  - *Note:* A use case for this option would be if an instructor wants to view students' grades to influence overall class participation (meaning grading must be enabled), but otherwise does not want to have the grades sync back to the Canvas Gradebook.

**An important note about the grade sync with Canvas:**

In order for grades to sync back to Canvas, students must launch each Perusall assignment from an assignment-specific link in Canvas, where the assignment has a name that matches the title of the one in Perusall (note that there is a 'Copy full title for LMS' button that ensures the title of the assignment in Perusall gets copied exactly). The assignment-specific link in Canvas appears as a button that prompts the student to load the assignment in a new window (shown below).



*Note:* If a grade is not syncing back to Canvas, it is possible the student launched Perusall from a general LTI link (i.e., just clicking the **Perusall** option in the left-hand menu on Canvas) or navigated to the assignment within Perusall's interface. This can be fixed retroactively (see this Perusall [resource](#) for more on this process).

Given this, it is recommended that the **Perusall** option in the left-hand menu in Canvas is hidden from student view, to eliminate alternative ways to navigate to the Perusall assignment (see this Canvas [resource](#) for how to hide menu options).

For other questions related to grades and scoring, reach out to [support@perusall.com](mailto:support@perusall.com).